

Series 35314

300# Flanged Cast Steel Gate Valve

Features

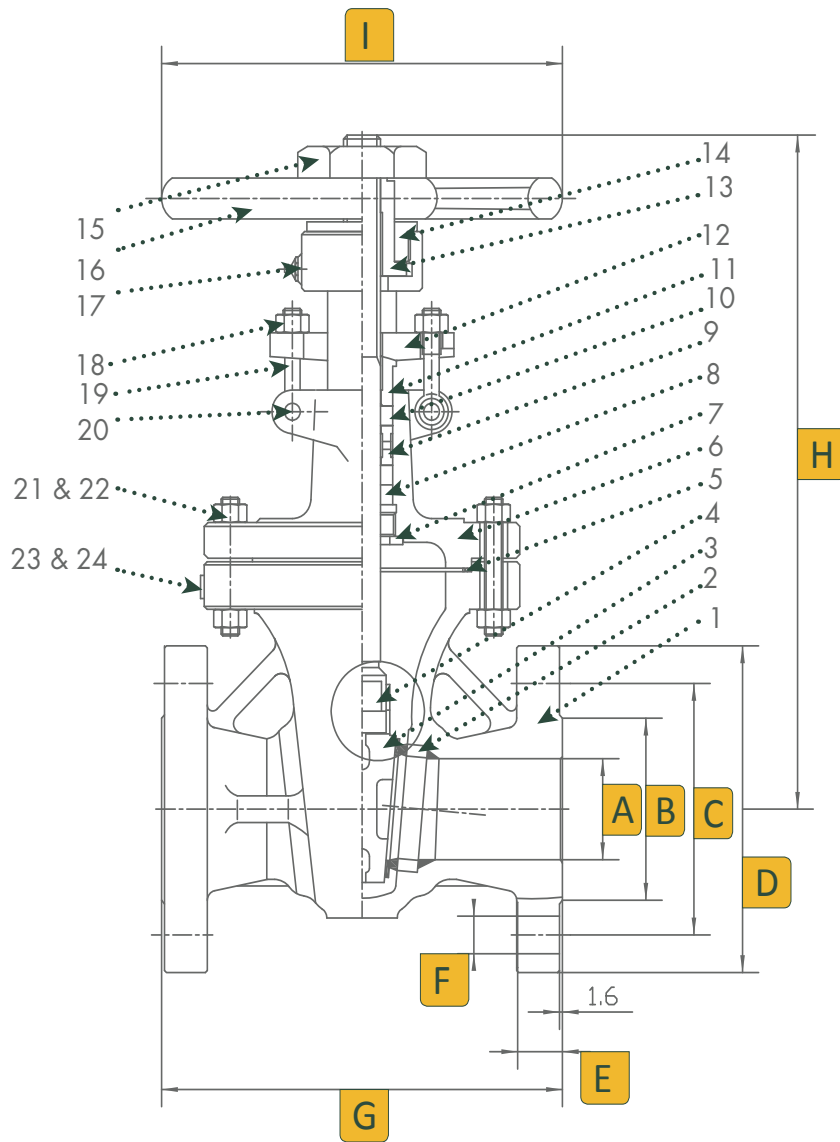
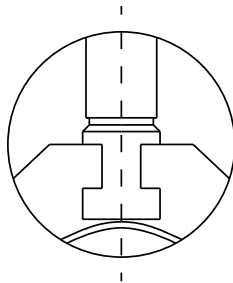
- Full port
- Outside screw and yoke
- Bolted bonnet
- Flexible wedge, fully guided
- Integrated seats
- Rising stem and non-rising hand-wheel
- Flanged ends
- Butt-weld ends
- Available with gear operator
- Nace MR-0175
- Trim 8
- Applicable Standards:
 - Gate valves API 603
 - Steel valves ANSI B16.34
 - Face to face ANSI B16.10
 - End flanges ANSI B16.5
 - Butt-weld ends ANSI B16.25
 - Inspection and test API 598



Valves, Automation & Controls



2" - 12" Dimensions, Parts & Materials

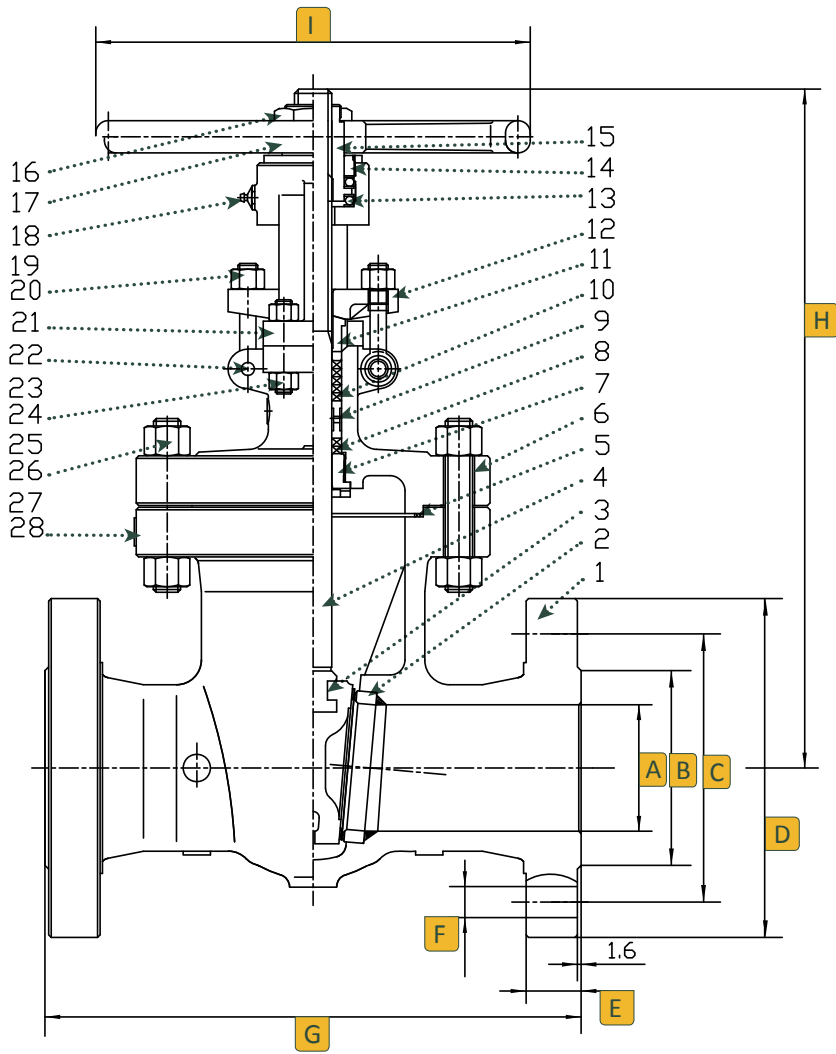


Dimensions (Inches)

Size	A	B	C	D	E	F	G	H	I	Num of Bolt Holes
2	2.00	3.62	5.00	6.50	0.87	0.75	8.50	14.00	7.87	8
2-1/2	2.50	4.12	5.88	7.50	1.00	0.875	9.50	18.11	7.87	8
3	3.00	5.00	6.62	8.25	1.12	0.875	11.12	17.10	9.84	8
4	4.00	6.19	7.88	10.00	1.25	0.875	12.00	19.60	9.84	8
6	6.00	8.50	10.62	12.50	1.44	0.875	15.88	25.80	13.78	12
8	8.00	10.62	13.00	15.00	1.62	1.00	16.50	30.80	15.75	12
10	10.00	12.75	15.25	17.50	1.87	1.125	18.00	36.70	17.72	16
12	12.00	15.00	17.75	20.50	2.00	1.25	19.80	56.30	19.70	16

No.	Part Name	Material
1	Body	Carbon Steel ASTM A216 - WCB
2	Seat	A105 & STL6
3	Wedge	A216 WCB & ER410
4	Stem	A182 - F6a
5	Gasket	304 Stainless Steel & Graphite
6	Bonnet	Carbon Steel ASTM A216 - WCB
7	Back Seat	410 Stainless Steel
8	Gland Packing	304 Stainless Steel & Graphite
9	Distance Ring	410 Stainless Steel
10	Gland Packing	Flexible Graphite
11	Gland	410 Stainless Steel
12	Gland Flange	Carbon Steel ASTM A216 - WCB
13	Stem Nut	A439-D2
14	Gland Nut	Carbon Steel
15	Lock Nut	Carbon Steel
16	Hand-wheel	Ductile Iron
17	Grease Nipple	Carbon Steel
18	Eye Nut	B7 Steel A193
19	Eye Bolt	2H Steel A194
20	Pin	Carbon Steel
21	Bolt	B7 Steel A193
22	Nut	2H Steel A194
23	Name Plate	304 Stainless Steel
24	Rivet	304 Stainless Steel

12" - 24" Dimensions, Parts & Materials



Dimensions (Inches)

Size	A	B	C	D	E	F	G	H	I	Num of Bolt Holes
12	12.00	15.00	17.75	20.50	2.00	1.25	19.80	56.30	19.70	16
14	14.00	16.25	20.25	23.00	2.12	1.25	30.00	60.70	22.10	20
16	16.00	18.50	22.50	25.50	2.25	1.375	33.00	68.60	25.20	20
18	18.00	21.00	24.75	28.00	2.37	1.375	36.00	82.20	25.20	24
20	20.00	23.00	27.00	30.50	2.50	1.375	39.00	84.70	28.40	24
24	24.00	27.25	32.00	36.00	2.75	1.625	45.00	104.40	35.40	24

No.	Part Name	Material
1	Body	Carbon Steel ASTM A216 - WCB
2	Seat	A105 & STL6
3	Wedge	A216 WCB & ER410
4	Stem	A182 - F6a
5	Gasket	304 Stainless Steel & Graphite
6	Bonnet	Carbon Steel ASTM A216 - WCB
7	Back Seat	410 Stainless Steel
8	Gland Packing	304 Stainless Steel & Graphite
9	Distance Ring	410 Stainless Steel
10	Gland Packing	Flexible Graphite
11	Gland	410 Stainless Steel
12	Gland Flange	Carbon Steel ASTM A216 - WCB
13	Axletree	
14	Gland Nut	Carbon Steel
15	Stem Nut	A439-D2
16	Lock Nut	Carbon Steel
17	Hand-wheel	Ductile Iron
18	Grease Nipple	Carbon Steel
19	Eye Bolt	2H Steel A194
20	Eye Nut	B7 Steel A193
21	Yoke	Carbon Steel ASTM A216 - WCB
22	Pin	Carbon Steel
23	Bolt	B7 Steel A193
24	Nut	2H Steel A194
25	Bolt	B7 Steel A193
26	Nut	2H Steel A194
27	Name Plate	304 Stainless Steel
28	Rivet	304 Stainless Steel

Shell Test Water psi	Seat Test Water psi	Seat Test Air psi
1125	814	80

Temperature °F	Working Pressure psi
-20 to 100	740
200	675
300	655
400	635
500	600
600	550
650	535
700	535
750	505
800	410
850	270
900	170
950	105
1000	60

Ordering

Fig: 8 - 35 - 3 - 1 - 4
 Description: 8" - Series 35 - 300# Flange Ends - Carbon Steel

Size	Series	Class	Ends	Body Material	Options	
2	35	3	300	4	Carbon Steel	X Oxygen Service
2-1/2						SF Silicon Free
3						RTJ Ring Type Joint Flange
4						
5						
6						
8						
10						
12						
14						
16						
18						
20						
24						