



Series PV15 -High Pressure- Open Body Pinch Valve



Quality Features at No Extra Cost!

- Short face-to-face
- Full port area
- Center sleeve closure
- Tight shut-off on solids
- Over pinch guard
- Positive pull opening tabs
- Valve position clearly visible

Heavy Construction at No Extra Cost!

- Rugged carbon steel body
- Easy to operate at high pressure
- Lubricated stem and bearing pad
- Stainless steel guide rods
- Reduced port sleeve for throttling flow
- Double wall sleeves for severe service

Many Synthetic Sleeve Materials Available:

Neoprene - Chlorobutyl - Hypalon - Buna-N® - Ethylene Propylene Rubber - Urethane and Viton™
When ordering above sleeve materials add the first letter of the material after the model number. i.e. Model PV15-N (N for Neoprene)

OPERATION

The Cla-Val Series PV15 Open Body Pinch Valves provide simple means to manually control the flow of abrasive and corrosive slurries, liquids and solids.

The valve operates by turning the handwheel clockwise to close, counter-clockwise to open like a gate valve, but unlike a gate valve the PV15 series valve has no sliding or rubbing metal surfaces to wear out - the sleeve is merely squeezed to the desired open or closed position. As a standard sleeve material, pure gum rubber with reinforced polyester fabric is used for highest strength and longer lasting cycle life.

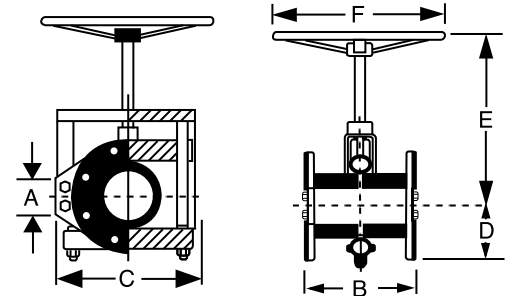
MAINTENANCE

Cla-Val Pinch Valves are basically maintenance free because the sleeve isolates all mechanical parts from the media. The sleeve is the only part typically inventoried for future replacement.

Applications

Mining - Waste and Water Treatment - Food Processing, Plants

The body of the PV15 Series Valve is available in carbon steel, aluminum or stainless steel. the open-frame design is standard.

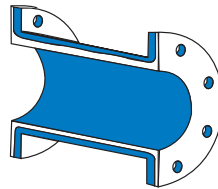


WHEN ORDERING,

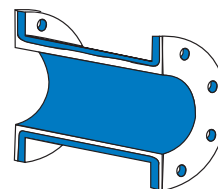
Note: please specify following information:

Flange	<input type="checkbox"/> ANSI	<input type="checkbox"/> ANSI 300
Drilling	<input type="checkbox"/> PN 6	<input type="checkbox"/> PN 10
	<input type="checkbox"/> PN 16	<input type="checkbox"/> BS 10
	<input type="checkbox"/> Other	<input type="text"/>

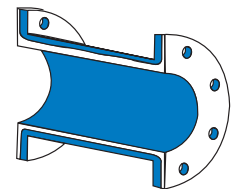
Pinch Valve
Standard Sleeve



Pinch Valve
Double Wall Sleeve



Pinch Valve
Reduced Port Sleeve



ID ¹	1/2	3/4	1	1 1/2	2	2 1/2	3	4	5	6	8	10	12	14	16	18	20	24
F/F ¹	4 -1/2	5 -1/2	6	6	8	10	12	16	20	24	32	40	48	42	48	54	60	72
W ¹	3 -1/2	6	6	6 -1/2	8	9	10	11 -3/4	13-1/2	15-1/2	19	25	28	31-3/8	37	40	44	51-3/4
A ¹	1 -3/4	2	2 -1/4	2 -1/2	3	3 -1/2	3 -3/4	4-1/2	5	5-1/2	6-3/4	8	9-1/2	10-1/2	11-3/4	12-1/2	13-3/4	16
B ¹	4 -1/8	5	7	8	9-1/4	10	12	14 -1/4	16	18	20	22	26	32	36	40	44	54
C ¹	4	4	6	8	9	10	12	14	16	18	20	26	32	36	40	44	48	54
Max. Work Pressure ²	200	200	200	200	200	200	150	150	150	150	150	150	150	150	150	150	150	150
Weight ³ (est.)	5	7	10	15	32	42	51	68	102	123	198	385	529	616	700	770	910	1260

1-inches 2-psi 3-pounds

Dimensions can be revised to fit custom specifications.