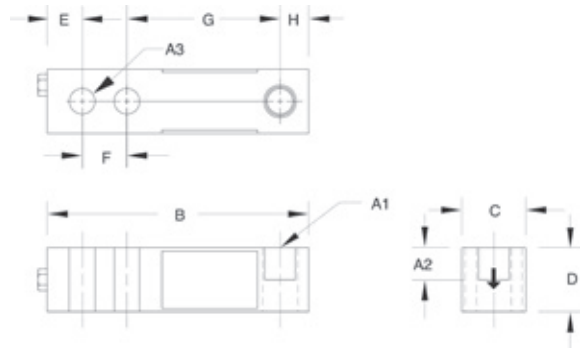


RL39123



Single-ended Beam, Stainless Steel



Picture is a representation of actual product



Specifications

<p>Full Scale Output: 3.0 mV/V</p> <p>Output Resistance: 349-355 ohms</p> <p>Input Resistance: 343-357 ohms</p> <p>Material/Finish: Stainless steel</p> <p>Temperature: Operating range -40° F to 150° F / -40° C to 65° C</p>	<p>Seal Type: Environmentally sealed</p> <p>Safe Overload: 150% full scale</p> <p>Safe Sideload: 100% full scale</p> <p>Rated Excitation: 5-10 VDC (15 V maximum)</p> <p>Nonlinearity: 0.03% full scale</p> <p>Hysteresis: 0.02% full scale</p>	<p>Insulation Resistance: 5,000 megohms</p> <p>Deflection at Capacity: 250 lb-1,000 lb=0.013 in (0.33 mm) 2,000 lb-3,000 lb=0.015 in (0.38 mm) 4,000 lb-5,000 lb=0.025 in (0.64 mm) 10,000 lb=0.32 in (0.81 mm) 15,000 lb-20,000 lb=0.038 in (0.97 mm)</p> <p>Cable Length: 20 ft (6.1 m)</p> <p>Cable Diameter: 0.200 polyurethane jacket</p>	<p>Cable Color Code: Red+ Excitation Black- Excitation Green+ Signal White- Signal</p> <p>Warranty: Two-year limited warranty</p> <p>Approvals:  </p>
---	---	--	--

Dimensions

RATED CAPACITY	A1	A2	A3	B	C	D	E	F	G	H
lb/inches										
250-4,000	1/2-20 UNF-2B	0.60	0.53	5.12	1.25	1.25	0.62	1.00	3.00	0.50
5,000-10,000	3/4-16 UNF-2B	0.75	0.78	6.75	1.50	1.50	0.75	1.50	3.75	0.75
kg/mm										
113.4-1,814.4	1/2-20 UNF-2B	15.2	13.5	130.1	31.8	31.8	15.8	25.4	76.2	12.7
2,268.0-4,535.9	3/4-16 UNF-2B	19.1	19.8	171.5	38.1	38.1	19.1	38.1	95.3	19.1
6,803.9	1-12 UNF-2B	25.4	26.2	222.3	50.8	50.8	25.4	50.8	120.7	25.4

Order Information

LOAD RATING	PART #	EST. SHIPPING WEIGHT	PRICE
250 lb (113.4 kg)	17386	3 lb	\$350.00
500 lb (226.8 kg)	17387	3 lb	350.00
1,000 lb (453.6 kg)	17189	3 lb	350.00
2,500 lb (1,134.0 kg)	17191	3 lb	350.00
4,000 lb (1,814.4 kg)	17193	3 lb	350.00
5,000 lb (2,268.0 kg)	17194	5 lb	420.00
10,000 lb (4,535.9 kg)	17195	5 lb	420.00
Conduit Adapter Kit (must be factory installed to maintain warranty)			
3/8-24 nipple	31533*	1 lb	30.00
3/8-24 to 1/4-18 NPT	31534*	1 lb	30.00

* PN 31533 and PN 31534 must be installed together to form the Conduit Adapter Kit

Interchangeable Products

MANUFACTURER	MODEL	PAGE #
VPG Revere®	9123	270
Artech®	SS30310	—
HBM®	B35	243

Weigh Module Available

MANUFACTURER	MODEL	PAGE #
Rice Lake Weighing Systems	RL50210 TA	52
Rice Lake Weighing Systems	RL1800 Series	62