



DP/GP15-35N, DP/GP20CN DP/GP40-55N, DP/GP50CN

Engine Powered Lift Trucks
1.5 - 5.5 tonnes

THE BEST TRUCK FOR EVERY JOB...

Cat® Lift Trucks is one of the leading manufacturers of vehicles for materials handling, including a variety of engine powered lift trucks covering every application – even in the harshest environments. Stylish, durable and well-designed, yet cost-effective and hard working, with an excellent dealer network delivering local support to guarantee you years of trouble-free service.

The diesel models have the power to cope with the challenge of outdoor conditions and demanding duty cycles, whilst the LPG models are flexible enough for use both indoors and outdoors. The range of 1.5 to 5.5 tonne engine powered trucks includes many features that make them even more dependable, cheaper to run, simpler to maintain and easier to use, which means greater productivity – and profitability – for you.

DIESEL MODEL RANGE

| MODEL | CAPACITY (kg) | LOAD CENTER | WHEEL BASE | PAGE |
|--------|---------------|-------------|------------|------|
| DP15N | 1500 | 500 | 1400 | 4 |
| DP18N | 1750 | 500 | 1400 | 4 |
| DP20CN | 2000 | 500 | 1400 | 4 |
| DP20N | 2000 | 500 | 1600 | 4 |
| DP25N | 2500 | 500 | 1600 | 4 |
| DP30N | 3000 | 500 | 1700 | 4 |
| DP35N | 3500 | 500 | 1700 | 4 |
| DP40N | 4000 | 500 | 1850 | 8 |
| DP45N | 4500 | 500 | 2000 | 8 |
| DP50CN | 5000 | 500 | 2000 | 8 |
| DP50N | 5000 | 600 | 2150 | 8 |
| DP55N | 5500 | 600 | 2150 | 8 |

LPG MODEL RANGE

| MODEL | CAPACITY (kg) | LOAD CENTER | WHEEL BASE | PAGE |
|--------|---------------|-------------|------------|------|
| GP15N | 1500 | 500 | 1400 | 12 |
| GP18N | 1750 | 500 | 1400 | 12 |
| GP20CN | 2000 | 500 | 1400 | 12 |
| GP20N | 2000 | 500 | 1600 | 12 |
| GP25N | 2500 | 500 | 1600 | 12 |
| GP30N | 3000 | 500 | 1700 | 12 |
| GP35N | 3500 | 500 | 1700 | 12 |
| GP40N | 4000 | 500 | 1850 | 13 |
| GP45N | 4500 | 500 | 2000 | 13 |
| GP50CN | 5000 | 500 | 2000 | 13 |
| GP50N | 5000 | 600 | 2150 | 13 |
| GP55N | 5500 | 600 | 2150 | 13 |

1.5 - 3.5 TONNES

Regardless of the application expectation, these compact engine powered models have deservedly acquired a name synonymous with durability.

The stylish exterior contains a truck built to last. The high air intake, strong fan cooling and enhanced dust filters make these amongst the most dependable vehicles available.

Add proven, ergonomic features such as finger-tip hydraulic controls and you have a tool that will continue to repay your investment over and over again.

STANDARD FEATURES

- Inviting operator compartment with excellent all round visibility.
- Powerful, dependable, easy to service engines with low emissions and fuel consumption.
- Vehicle Control Module manages various truck and operator functions allowing easy trouble shooting and pin pointing of problems.
- Dual element cyclone air filter with high air intake reducing maintenance.
- PowerShift transmissions that are easy to operate and service.
- Fingertip hydraulic controls mounted on a fully adjustable armrest for optimum load handling and easy maneuverability.
- Hydrostatic steering for increased productivity.
- LCD display provides extensive information on truck operation and maintenance state. It also indicates service requirements to prevent unexpected down time and cost due to unscheduled maintenance and service.
- Presence Detection System (PDS) prevents truck operation when operator is not seated.
- Operator Pin Code to prevent unauthorized usage of the truck.
- LED lights on the front work lights and front/rear combination lights reduce energy consumption and maintenance costs.
- Automotive style brake system, self energising and self adjusting.
- Double action parking brake with audible alarm.
- Catalytic converter to further reduce exhaust emissions (optional on diesel engined trucks).

OPTIONAL FEATURES

- Panel cabin options.
- Wide range of masts.
- Hydraulic valves and piping to control auxiliary attachments.
- Elevated exhaust.
- Catalytic converter to further reduce exhaust emissions.
- Cooling options like coolant level warning, anti clogging radiator and "easy to clean" dust proof net to cope with dusty and dirty applications.
- Tyre options like pneumatic tyres for special surfaces and dual tyres for even better capacity or lower ground pressure.
- Power-line options like drive shaft protection, torque converter temperature warning and special dust protection breathers.



4.0 - 5.5 TONNES

These larger engine powered models are designed for heavy duty applications and are the natural choice for use in ports, construction, freight, and metal and brick operations.

With exceptional endurance and power they effortlessly handle the most difficult and heavy loads even when operating at full capacity.

In the diesel powered models, the tough six-cylinder engine's precombustion chamber allows each cylinder to work at peak efficiency regardless of load and speed and contributes to the truck's exceptionally low noise, vibrations, emissions and economy.

The rotary fuel pump allows easy maintenance while protecting the engine.

The GP40-GP55N models are equipped with a TB45 LPG engine with standard catalytic converter that delivers good performance, excellent fuel economy and low emissions, as well as low noise and vibration levels.

The compact, smooth lines of each model ensure that they are easy to manoeuvre in confined spaces whilst ensuring good visibility. The excellence of the range is further boosted by a wide array of options that enable you to fine tune each truck to your work requirements.



4.0 - 5.5 TONNES

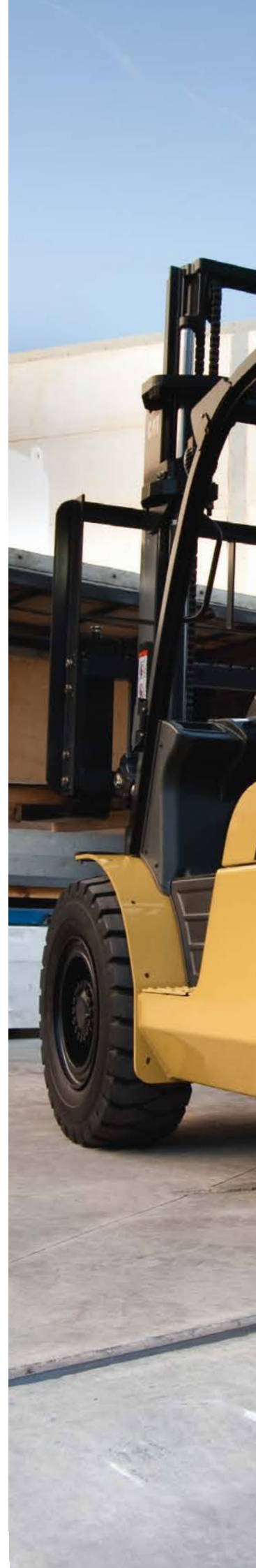
Rugged features and uncompromising quality to meet productivity challenges in the heavy-duty environment.

STANDARD FEATURES

- Durable 6 cylinder diesel and LPG engines providing plenty of power and torque.
- Full floating power line featuring two forward speeds and one reverse with high gradeability and travel speed.
- Fingertip hydraulic mast control.
- LCD multi-functional display with individual pin code access and indicators providing all safety functions. The display also indicates service requirements to prevent unexpected down time and cost due to unscheduled maintenance and service.
- Specially positioned air intake system which lengthens the life of air intake filters, reducing maintenance.
- PDS+, presence detection system disengages drive and hydraulic functions when the operator's seat is vacated.
- Handgrip mounted at the rear of the overhead guard with a horn button increases safety and reduces back strain and fatigue in applications with repetitive reversing.
- LED lights on the front work lights and front/rear combination lights reduce energy consumption and maintenance costs.
- Adjustable steering column for comfortable operation for a wide variety of operators.
- Automotive style brake system, self energising and self adjusting.
- Catalytic converter to further reduce exhaust emissions. (optional on Diesel).

OPTIONAL FEATURES

- Panel cabin options.
- Hydraulic valves and piping to control auxiliary attachments.
- Pre-cleaner air intake option to adapt the truck to harsh applications.
- Elevated exhaust, catalytic converter and spark arresting cyclone muffler exhaust options.
- Coolant level warning, anti clogging radiator and "easy to clean" dust proof net cooling options to cope with dusty and dirty applications.
- Tyre options: Solid Pneumatic tyres and dual tyres for even better capacity or lower ground pressure.
- Pro-Shift transmission abuse protection system.
- Low maintenance oil cooled wet disc brakes.





Although tough enough for the hardest task the larger models have the feel of a small truck, which makes them easier to drive and more efficient in the workplace.

A small steering wheel, hydrostatic steering system, easy hydraulic control and low impact brakes take the effort out of driving, leaving the operator to concentrate on the job in hand.

COMFORT IN ALL ENVIRONMENTS CABIN SOLUTIONS

In extreme weather conditions keep your operators comfortable and productive, with our carefully selected range of cabin options. These close-fitting cabins keep the elements out, without compromising visibility. Our cabs combine form and function and are designed to keep the truck performing in the most extreme of temperatures and in wet environments.

PANEL CABINS

The overhead guard on the N range is designed for mounting special panels in kit forms for retro-fit in the field. Panel cabins are available in the following configurations:

FRONT+TOP: Laminated glass front window with 2 speed wiper/washer, high visibility overhead guard with a roof shield.

REAR: based on FRONT+TOP and adds a tempered glass rear window with wiper/ washer.

PVC/D: Based on FRONT+TOP and REAR but with the addition of PVC doors.

STEEL/D: Based on FRONT+TOP and REAR with the addition of lockable steel doors featuring a sliding window in each door. The doors are fully lined and the roof panel is covered for even better insulation.

PANEL CABINS FEATURES

- Manufacturer supplied in kit form for custom installation.
- Anti-dazzle tinted glass standard on all panels.
- **Optional extras include (STEEL/D only):**
 - Integrated heating system.
 - Floor located high performance heater.



Panel Cabin
with Steel doors (Prototype).