

# SERIES 215 SIGHT FLOW INDICATORS

CLASS 150 FLANGED CONNECTION / WINDOW TYPE  
 CONSTRUCTION: CARBON STEEL, STAINLESS STEEL OR PVC

## CARBON STEEL OR STAINLESS STEEL

Plain, Ball Action, Flapper, Drip Tube or Rotating Wheel

### Pressure Rating:

Furnished with Tempered glass: 200 PSI  
 (\*PVC 100 PSI with Tempered glass @ 75°F)

### Flange Connections:

- Raised face: Carbon Steel, Stainless Steel
- Flat Face: PVC

\*NOTE: PVC only available in Model EFI 215-P, or 215-B.

PTFE gaskets standard with PVC.

Consult Ernst Flow Industries for PVC dimensions and weights.

CARBON STEEL OR STAINLESS STEEL				
NPT Conn.	Dimensions in Inches			Approx. Weight (lbs.)
	A	B	C	
1	7	1-3/4	4-1/4	10
1-1/2	7-1/4	1-3/4	5	13
2	9	3	6	21
2-1/2	9	3	7	27
3	9-1/4	3	7-1/2	32
4	9-1/4	3	9	42
6	9-1/4	3	11	53



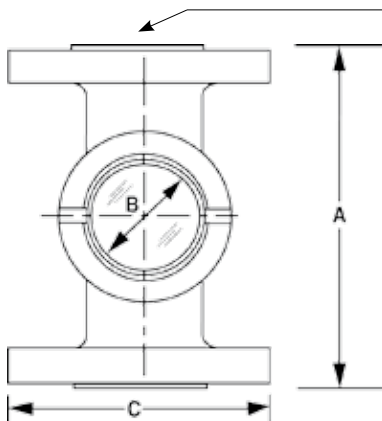
**MODEL EFI 215-P**  
(Plain)



**MODEL EFI 215-R**  
(Rynite® Rotating Wheel)

**MODEL EFI 215-P**  
(Ball Action)  
 not shown... specify ball material

150# RF Flanged Connections



**MODEL EFI 215-F**  
(Rynite® Flapper)  
 Not recommended for downward flow



**MODEL EFI 215-D**  
(Drip Tube)