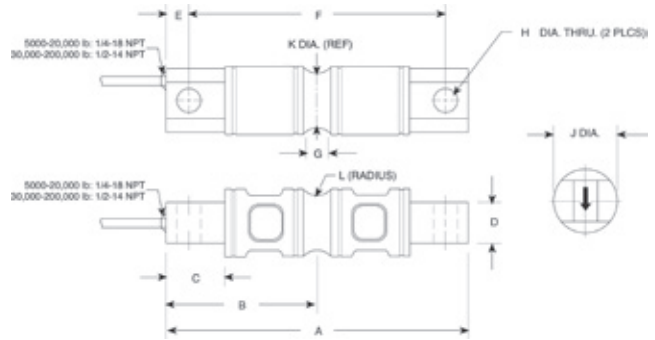


# RL70000

Double-ended Beam, Alloy Steel, NTEP Certified 1:10,000 Class IIIL Multiple Cell, IP67



Picture is a representation of actual product



## Specifications

**Full Scale Output:**  
3.0mV/V

**Output Resistance:**  
700 (± 5) ohms

**Input Resistance:**  
770 (± 10) ohms

**Material/Finish:**  
High-alloy steel, nickel plated

**Temperature:**  
Compensated range  
14° F to 104° F/-10° C to 40° C  
Operating range  
-40° F to 150° F/-40° C to 65° C

**Safe Overload:**  
150% full scale

**Safe Sideload:**  
100% full scale

**Rated Excitation:**  
5-10 VDC (15 V maximum)

**Combined Error:**  
0.02% full scale

**Insulation Resistance:**  
5,000 megohms

**Seal Type:**  
Environmentally sealed, IP67

**Deflection at Capacity:**  
5,000 lb=0.02 in (0.5 mm)  
10,000 lb=0.025 in (0.6 mm)  
20,000 lb=0.042 in (1.1 mm)  
30,000-50,000 lb=0.02 in (0.5 mm)  
60,000 lb=0.025 in (0.6 mm)  
100,000 lb=0.02 in (0.5 mm)

**Cable Length:**  
30 ft (9.1 m)

**Cable Diameter:**  
5,000 lb-20,000 lb=0.200  
30,000 lb-250,000 lb=0.305

**Cable Color Code:**  
Red .....+ Excitation  
Black.....- Excitation  
Green.....+ Signal  
White.....- Signal

**Warranty:**  
Two-year limited warranty

**Approvals:**

## Dimensions

RATED CAPACITY	A	B	C	D	E	F	G	H	J	K	L
<b>lb/inches</b>											
5,000-10,000	8.12	4.06	1.44	1.12	0.62	6.88	0.62	0.66	1.70	1.48	0.50
20,000	8.12	4.06	1.44	1.12	0.62	6.88	0.84	0.66	1.95	1.48	0.50
30,000-60,000	10.25	5.12	1.88	2.37	0.88	8.50	1.00	1.06	3.20	2.73	1.00
100,000	11.25	5.62	1.88	2.50	0.88	9.50	1.00	1.06	3.50	3.24	1.50
150,000	11.25	5.62	1.88	2.80	0.88	9.50	1.25	1.06	3.90	3.64	1.50
200,000-250,000	16.10	8.05	3.05	4.60	1.55	13.00	1.30	1.56	5.38	5.17	2.00
<b>kg/mm</b>											
2,268.0-9,071.9	206.3	103.1	36.6	28.5	15.8	174.8	15.8	16.8	55.9	37.6	12.7
9,071.9	206.3	103.1	36.6	14.2	21.3	174.8	21.3	16.8	52.8	37.6	12.7
13,607.8-27,215.6	260.4	130.1	47.8	60.2	22.4	215.9	25.4	26.9	81.3	69.3	25.4
45,359.4	285.8	142.8	47.8	63.5	22.4	241.3	25.4	26.9	88.9	82.3	25.4
68,038.8	285.8	142.8	47.8	71.1	22.4	241.3	31.8	26.9	99.1	92.5	38.1
90,718.5-113,398	409.0	204.5	77.5	116.8	39.4	330.2	33.0	39.6	136.7	131.3	50.8

## Order Information

LOAD RATING	PART #	EST. SHIPPING WEIGHT	PRICE
<b>NTEP Certified</b>			
5,000 lb	(2,268.0 kg) 36263	5 lb	\$655.00
10,000 lb	(4,535.9 kg) 36264	6 lb	655.00
20,000 lb	(9,071.9 kg) 36265	7 lb	655.00
30,000 lb	(13,607.8 kg) 36266	18 lb	755.00
40,000 lb	(18,143.7 kg) 36267	18 lb	755.00
50,000 lb	(22,679.6 kg) 36268	18 lb	755.00
60,000 lb	(27,215.5 kg) 36269	18 lb	755.00
100,000 lb	(45,359.2 kg) 36270	28 lb	1,475.00
150,000 lb	(68,038.8 kg) 36976	34 lb	1,475.00
200,000 lb	(90,718.5 kg) 36977	90 lb	2,775.00
<b>Non-NTEP</b>			
250,000 lb	(113,398.0 kg) 36978	93 lb	2,775.00

## Interchangeable Products

MANUFACTURER	MODEL	PAGE #
VPG Revere®*	5103*	278
Artech®	70210	—
Mettler-Toledo	SLD 430	—
VPG Celtron®	CSB	205

\*Conduit adapter optional

## Weigh Module Available

MANUFACTURER	MODEL	PAGE #
Rice Lake Weighing Systems	EZ Mount 1	86