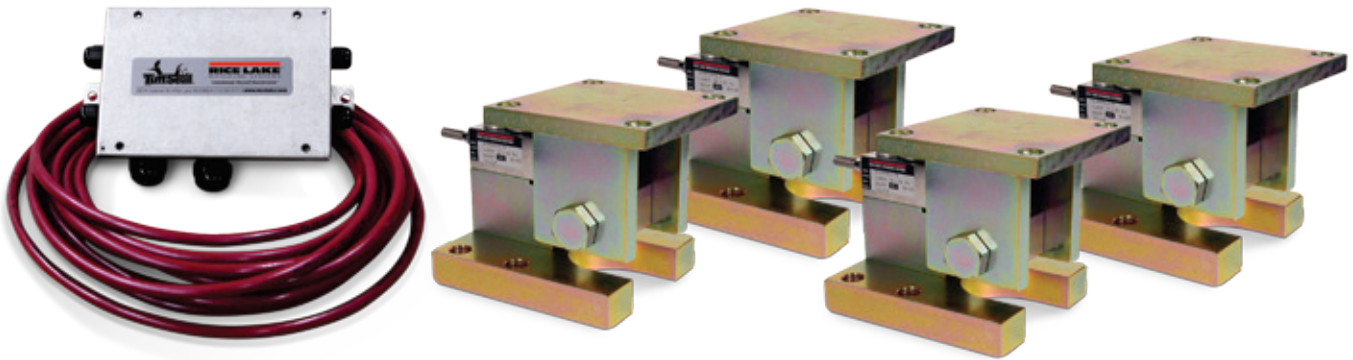


RL1800 Series

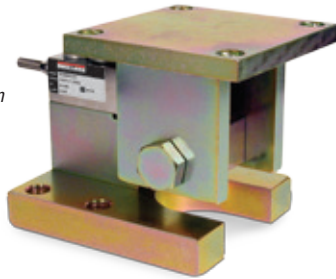
Mild Steel/Stainless Steel Weigh Modules



Available in configurations with three or four mounting assemblies.

Picture is a representation of actual product

The RL1800 Series mounting assembly kit utilizes several Rice Lake Weighing Systems components to provide an unmatched level of performance in tank and hopper weighing applications. The RL1800 Series kit is ideally suited for indoor and outdoor process control operations with medium-range capacities. Each module combines multi-directional movement and self-checking capabilities. The RL35023 and RL35023S load cells used are NTEP Certified in capacities of 1,000 lb to 10,000 lb.



Module with RL35023 single-ended beam load cell.

Standard Features

- Capacities (per module): 250 lb-10,000 lb (113.4 kg-4535.9 kg)
- NTEP Certified cells in 1,000 lb-10,000 lb (453.6 kg-4535.9 kg) capacities, except 3,000 lb (1,360.9 kg)
- Zinc plated mild steel/stainless steel construction
- Center-pivoted, tension loading design
- Self-checking, multi-directional movement
- Load is suspended on high-strength bolt instead of wire rope
- Design incorporates spherical washers for self centering
- Stainless steel kit includes RL35023S NTEP Certified load cell

Applications

- Conveyors
- Medium-capacity tanks and hoppers

Complete Kit Includes

- 1 JB4SS NEMA Type 4X stainless steel signal trim junction box
- 3 or 4 RL1800 mild or stainless steel compression mounts
- 3 or 4 RL35023 single-ended beam load cells, RL35023S used in stainless kits
- 25 ft of our hostile environment EL147HE SURVIVOR® load cell cable

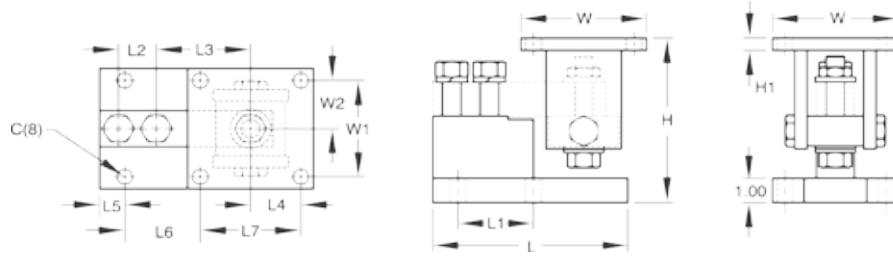
Load Cell Certifications



Except 250 lb
and 500 lb

RL1800 Series

Mild Steel/Stainless Steel Weigh Modules



Dimensions

RATED CAPACITY	C	H MIN/ MAX	H1	L	L1	L2	L3	L4	L5	L6	L7	W	W1	W2
Mild Steel Construction														
lb/inches														
250-5,000 SE*	0.62	5.25/5.56	0.50	6.00	2.00	1.00	3.00	2.00	0.68	1.94	4.00	5.00	4.00	2.00
5,000 LE**-10,000	0.62	6.12/6.62	0.50	7.75	3.00	1.50	3.75	2.00	1.03	2.97	4.00	5.00	4.00	2.00
kg/mm														
113.4-2,268.0	15.8	133.4/141.2	12.7	152.4	50.8	25.4	76.2	50.8	17.3	49.3	101.6	127.0	101.6	50.8
2,268.0-4,535.9	15.8	155.4/168.1	12.7	196.9	76.2	38.1	95.3	50.8	26.2	75.4	101.6	127.0	101.6	50.8
Stainless Steel Construction														
lb/inches														
1,000-4,000	0.62	5.25/5.56	0.50	6.00	2.00	1.00	3.00	2.00	0.68	1.94	4.00	5.00	4.00	2.00
5,000-10,000	0.62	6.12/6.62	0.50	7.75	3.00	1.50	3.75	2.00	1.03	2.97	4.00	5.00	4.00	2.00
kg/mm														
453.6-1,814.4	15.8	133.4/141.2	12.7	152.4	50.8	25.4	76.2	50.8	17.3	49.3	101.6	127.0	101.6	50.8
2,268.0-4,535.9	15.8	155.4/168.1	12.7	196.9	76.2	38.1	95.3	50.8	26.2	75.4	101.6	127.0	101.6	50.8

Mild Steel Order Information

LOAD RATING (PER MODULE)***	PART #	PRICE
Single Module (Does NOT Include Load Cell)		
250 lb-5,000 lb SE* (113.4 kg-2,268.0 kg)	17817	\$325.00
5,000 lb LE**-10,000 lb (2,268.0 kg-4,535.9 kg)	17819	350.00
3-Module Kit		
250 lb*** (113.4 kg)	18075	1,995.00
500 lb*** (226.8 kg)	18076	1,995.00
1,000 lb (453.6 kg)	18077	1,995.00
2,000 lb (907.2 kg)	18078	1,995.00
2,500 lb (1,134.0 kg)	18079	1,995.00
3,000 lb (1,360.8 kg)	18080	1,995.00
4,000 lb (1,814.4 kg)	18081	1,995.00
5,000 lb SE* (2,268.0 kg)	18082	1,995.00
5,000 lb LE** (2,268.0 kg)	18083	2,295.00
10,000 lb (4,535.9 kg)	18084	2,295.00
4-Module Kit		
250 lb† (113.4 kg)	18085	2,595.00
500 lb† (226.8 kg)	18086	2,595.00
1,000 lb (453.6 kg)	18087	2,595.00
2,000 lb (907.2 kg)	18088	2,595.00
2,500 lb (1,134.0 kg)	18089	2,595.00
3,000 lb (1,360.8 kg)	18090	2,595.00
4,000 lb (1,814.4 kg)	18091	2,595.00
5,000 lb SE* (2,268.0 kg)	18092	2,595.00
5,000 lb LE** (2,268.0 kg)	18093	2,995.00
10,000 lb (4,535.9 kg)	18094	2,995.00

* SE refers to small envelope
 ** LE refers to large envelope
 *** Non NTEP Certified

Stainless Steel Order Information

LOAD RATING (PER MODULE)****	PART #	PRICE
Single Module (Does NOT Include Load Cell)		
250 lb-4,000 lb (113.4 kg-1,814.4 kg)	17818	\$525.00
5,000 lb-10,000 lb (2,268.0 kg-4,535.9 kg)	17820	550.00
3-Module Kit		
1,000 lb (453.6 kg)	18095	2,695.00
2,000 lb (907.2 kg)	18096	2,695.00
2,500 lb (1,134.0 kg)	18097	2,695.00
4,000 lb (1,814.4 kg)	18099	2,695.00
5,000 lb LE** (2,268.0 kg)	18100	2,925.00
10,000 lb (4,535.9 kg)	18101	2,925.00
4-Module Kit		
1,000 lb (453.6 kg)	18102	3,595.00
2,000 lb (907.2 kg)	18103	3,595.00
2,500 lb (1,134.0 kg)	18104	3,595.00
4,000 lb (1,814.4 kg)	18106	3,595.00
5,000 lb LE** (2,268.0 kg)	18107	3,910.00
10,000 lb (4,535.9 kg)	18108	3,910.00
Dummy Cell		
Dummy load cell 1 k-5 k SE*	22980	45.00

**** Load rating is per module

† Use RL30000 load cells