



Stancor Series CB1000-1 Single Phase Simplex Controller

GENERAL DESCRIPTION

Stancor's Series CB1000-1 Simplex controllers offer dependable, automatic operation of a single phase pump. The standard features and optional functions provide the user with the flexibility needed for servicing a variety of sump, ejector or tank applications. Stancor Simplex controls can be used with any Stancor float switches, and are also compatible with various diaphragm or vertical rod switches.

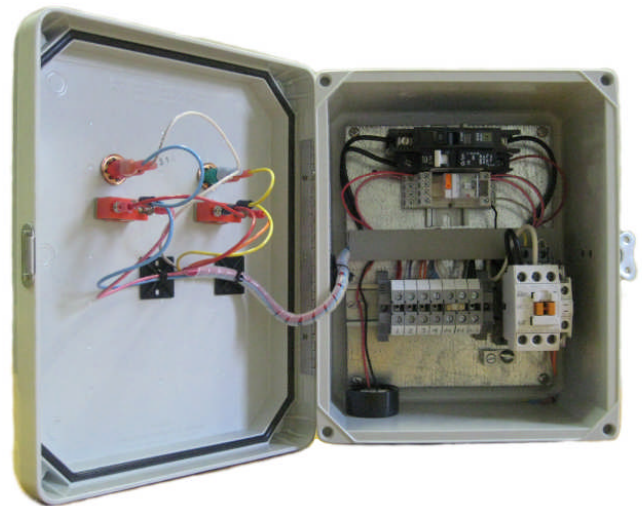


STANDARD FEATURES

- NEMA 4X Corrosion Resistant, Outdoor rated Enclosure with SS locking hasp
- Pump Breaker, 1 pole for 115 V; 2 pole for 230 V
- Pump Contactor, 1 HP at 115 V; 2 HP at 230 V
- Separate Control Circuit
- Green Pump Run Light (Door Mounted)
- Manual-Off-Auto Selector Switch (Door Mounted)
- Individual Terminals For Field Wiring
- Circuit Wiring Diaphragm

OPTIONAL FEATURES

- A. High Water Alarm. A red LED light, buzzer, and Test-Silence switch are furnished. (Door Mounted)
- B. Mechanical Float Switches with 20', 40' or 60' cords. (Specify)
- C. Dry contacts for remote alarm signal.



Stancor, Inc.

515 Fan Hill Road, Monroe, CT 06468

203-268-7513 • FAX 203-268-7958 • www.stancorpumps.com