

CYLINDER TYPE SIGHT FLOW INDICATORS

PLAIN

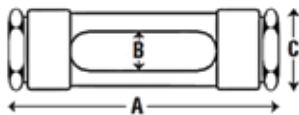
Construction: Brass, Carbon Steel, Stainless Steel

Pressure Rating 150 PSI

- CRN – All Provinces

NPT Conn.	Dimensions in Inches			Approx. Weight (lbs.)
	A	B	C	
1/4	4-7/8	5/8	1-1/2	1
3/8	4-7/8	5/8	1-1/2	1
1/2	6	3/4	1-3/4	2
3/4	6-5/8	1	2	2-1/2
1	6-5/8	1	2	2-1/2
1-1/4	9-1/8	1-3/8	2-7/8	6
1-1/2	9-1/8	1-3/8	2-7/8	6

"A" Dimension ± 1/8"



MODEL EFI 4000-S

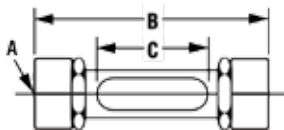
Note: Furnished with Bronze body...fluid does not contact body

OIL LINE TYPE / MALE OR FEMALE CONN.

Construction: Brass

Pressure Rating: Size 1 through 4 - 100 PSI
Size 5 through 8 - 50 PSI

Size No.	Dimensions in Inches			Glass O.D.
	A NPT Conn. Male / Female	B	C	
1	1/8	2-7/16	1-3/16	5/8
2	1/4	3	1-3/16	5/8
3	3/8	3	1-3/16	5/8
4	1/2	4-1/2	2-1/4	5/8
5	3/4	4-1/2	2	7/8
6	1	5	2-3/8	1
7	1-1/4	5-1/4	2-3/8	1-1/4
8	1-1/2	5-1/4	2-3/8	1-1/2



MODEL EFI 265

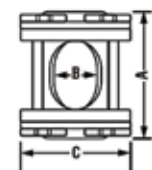
PLAIN

Construction: Steel or Stainless Steel

Flanged Conn.	Dimensions in Inches			Approx. Weight (lbs.)	Pressure Rating (PSI)
	A	B	C		
1/2	6-1/8	13/16	3-1/2	5	150
3/4	6-3/8	1-1/16	3-7/8	8	150
1	6-3/8	1-1/16	4-1/4	11	150
1-1/2	6-3/4	1-5/8	5	16	150
2	7-5/8	2	6	23	120
2-1/2	7-7/8	2-3/8	7	31	100
3	8-1/8	2-3/4	7-1/2	33	100

"A" Dimension ± 1/8"

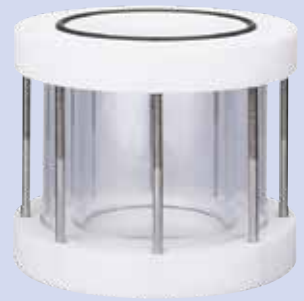
Note: Furnished with Iron body...fluid does not contact body



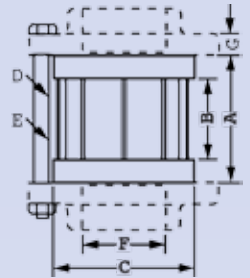
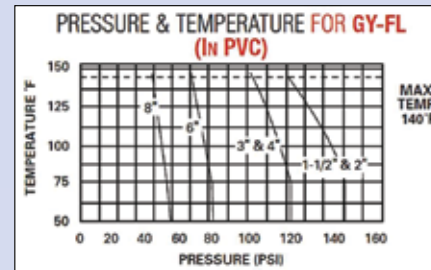
MODEL EFI 860-F

"WAFER" INDICATOR

Model No. EFI GY-FI flow indicators utilize double wall construction and are used on flanged piping systems handling highly corrosive or ultra-pure liquids compatible with borosilicate glass. They cannot be used with hydrofluoric acid or sodium hydroxide as they will etch the borosilicate cylinder wall. PVC ends are standard. PP, CPVC, PTFE and Kynar® ends also available. Fluorocarbon seals are standard. These indicators will fit 1-1/2" through 8" smooth face standard companion flanges. Two flange O-ring seals are supplied, therefore, other gasketing materials are not required. The inner cylinder is borosilicate for maximum corrosion resistance and the outer cylinder is high impact acrylic, which acts as a protective shield against external impacts.



MODEL EFI GY-FL
(All Bolting Stainless Steel)



Pipe Size	Dimensions in Inches						
	A Wafer Assembly Length	B Visible Glass Length	C Wafer Assembly Diameter	D Bolt Size	E No. of Bolts Required	F Max I.D. ASME Flanges	G ASME Flange Thickness
1-1/2	4-1/2	2-1/2	3-3/8	1/2-13 x 5	4	1-9/16	11/16
2	5	3	4-1/8	5/8-11 x 7-1/2	4	2-1/16	3/4
3	5-1/4	3-1/4	5-7/16	5/8-11 x 8	4	3-1/16	1-1/32
4	5-5/8	3-5/8	6-7/8	5/8-11 x 9	8	4-5/16	1-1/32
6	6-1/8	4-1/4	8-11/16	3/4-10 x 10	8	6-5/16	1-7/32
8	6-1/4	4-1/4	10-7/8	3/4-10 x 10	8	8-5/16	1-7/16

POLYVINYL CHLORIDE (PVC)

FOR HIGHLY CORROSIVE FLUIDS

Pressure Rating:
(1/2" through 2" NPT) 112 PSI @ 140°F
(3" NPT) 92 PSI @ 140°F

These sight glasses have a heavy duty borosilicate inner cylinder with a heavy duty outer cylinder of Acrylic surrounding and protecting it. This combination with Fluorocarbon seals offers excellent visibility and maximum chemical resistance.

Connecting bolts and nuts are stainless steel.



MODEL EFI GY

NPT Conn.	Dimensions in Inches			
	A	B	C	D
1/2	2-1/4	4-3/4	1-1/2	2-1/2
3/4	2-1/4	4-3/4	1-1/2	2-1/2
1	2-1/4	5-1/4	1-3/4	3
1-1/4	2-1/2	5-7/8	2-3/8	3-1/2
1-1/2	2-1/2	5-7/8	2-3/8	3-1/2
2	3-1/8	7-3/8	2-7/8	4
3	3-3/8	8-3/8	4-3/8	5-1/2

Polypropylene Ends Also Available
Pressure Rating 50 PSI @ 185°F

