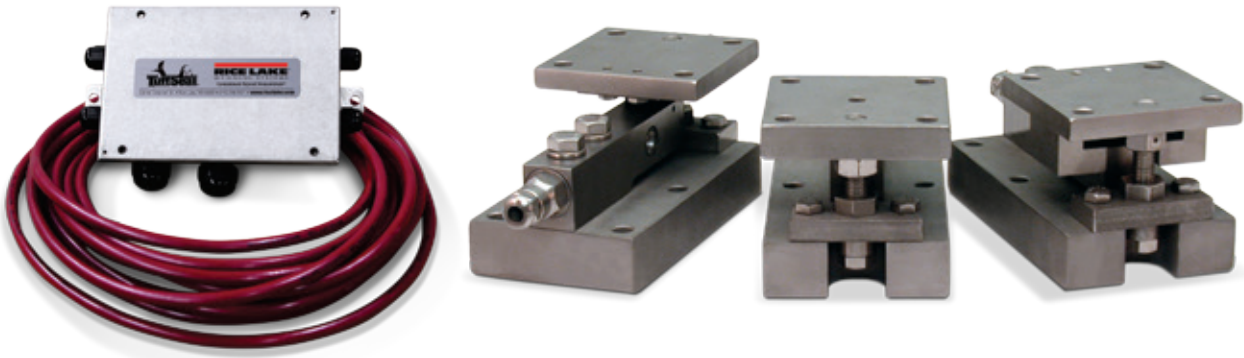


Paramounts® HS

(Hermetically Sealed Load Cells) Mild Steel, Light- to Medium-capacity Tank Weighing Systems

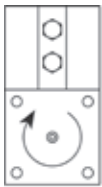
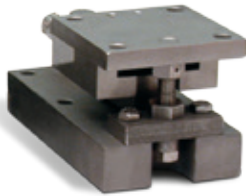


Available in configurations with three or four mounting assemblies.

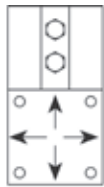
Picture is a representation of actual product

The Paramounts tank weighing system consists of one fixed-pin mount which allows only the top plate to rotate, one side-stop mount which allows the top plate to slide along the cell only, and one or more free-sliding mount(s) which allow the top plate to slide freely in all directions. This system provides self checking in applications of extreme temperature fluctuations and vibration while maintaining unparalleled system accuracy.

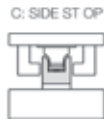
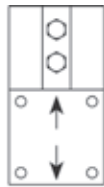
Free-sliding module with Flintec SB4 bending beam load cell.



Fixed-Pin Mount



Free-Sliding Mount



Side-Stop Mount

Standard Features

- Capacities (per module): 520lb-22,500lb (2.3kN/102.1 kg-100kN/10,205.9kg)
- Unique design allows for thermal expansion/contraction
- Jacking screw allows empty vessel to be lifted clear of load cell for maintenance
- Unique blind load hole eliminates unwanted side and eccentric loads
- Vessel is free to slide laterally on PTFE-coated surfaces
- Load cell outputs are matched to $\pm 0.07\%$, allowing replacement without further calibration

Applications

- Light- to medium-capacity tanks and hoppers
- High-vibration mixers and blenders
- Process measurement and control

Complete Kit Includes

- 1 JB4SS NEMA Type 4X stainless steel signal trim junction box
- 1 fixed-pin module, 1 side-stop module, and 1 or 2 free-sliding assemblies. Each module is complete with a Flintec® SB4 or SB10 (520 lb) stainless steel hermetically sealed load cell.
- 25 ft of our hostile environment EL147HE SURVIVOR® load cell cable

Optional Features

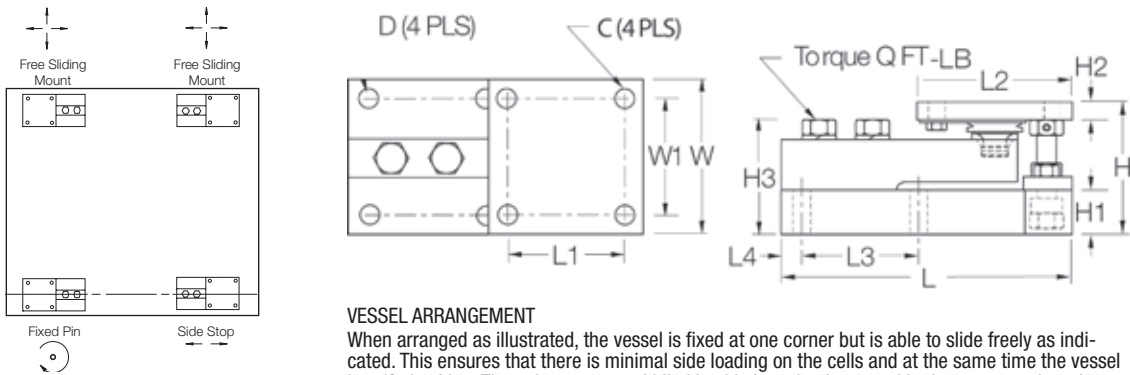
- NTEP Certified load cells available: Capacities 1,125lb-11,250lb

Load Cell Certifications



Paramounts® HS

(Hermetically Sealed Load Cells) Mild Steel, Light- to Medium-capacity Tank Weighing Systems



VESSEL ARRANGEMENT

When arranged as illustrated, the vessel is fixed at one corner but is able to slide freely as indicated. This ensures that there is minimal side loading on the cells and at the same time the vessel is self-checking. The unique, patented blind load hole technology used in these mounts introduces the load at the neutral axis of the load cell which helps minimize the effects of side loads.

Dimensions

RATED CAPACITY	C	D	H	H1	*H2	**H2	H3	L	L1	L2	L3	L4	W	W1	Q (FT- LB)	
lb/inches																
520 (2.3 kN†)	0.375	0.437	3.49	1.00	0.50	0.75	2.98	7.51	3.00	4.00	3.00	0.50	4.00	3.00	65.00	
1,125-5,200 (5 kN†-23 kN†)	0.437	0.437	3.58	1.25	0.50	0.75	3.06	7.51	3.00	4.00	3.00	0.50	4.00	3.00	65.00	
11,250 (50 kN†)	0.562	0.562	4.66	1.50	0.62	1.00	4.09	9.19	3.87	5.00	3.87	0.56	5.00	3.87	295.00	
22,500 (100 kN†)	0.688	0.688	6.41	2.00	0.75	1.25	5.73	11.46	4.75	6.00	4.75	0.69	6.00	4.75	515.00	
kg/mm																
236.1	9.5	11.1	88.6	25.4	12.7	19.1	75.7	190.8	76.2	101.6	76.2	12.7	101.6	76.2	—	
510.8-2,360.0	11.1	11.1	90.9	31.8	12.7	19.1	77.7	190.8	76.2	101.6	76.2	12.7	101.6	76.2	—	
5,107.5	14.3	14.3	118.4	38.1	15.7	25.4	103.9	233.4	98.3	127.0	98.3	14.2	127.0	98.3	—	
10,215.0	17.5	17.5	162.8	50.8	19.1	31.8	145.5	291.1	120.7	152.4	120.7	17.5	152.4	120.7	—	

Order Information

LOAD RATING (PER MODULE)	PART #	PRICE
NTEP Certified 3-Module Kit		
1,125 lb (5 kN†/510.8 kg)	29871	\$2,695.00
2,250 lb (10 kN†/1,021.5 kg)	29872	2,695.00
5,200 lb (23 kN†/2,360.8 kg)	29873	2,695.00
11,250 lb (50 kN†/5,107.5 kg)	29874	3,295.00
NTEP Certified 4-Module Kit		
1,125 lb (5 kN†/510.8 kg)	29875	3,525.00
2,250 lb (10 kN†/1,021.5 kg)	29876	3,525.00
5,200 lb (23 kN†/2,360.8 kg)	29877	3,525.00
11,250 lb (50 kN†/5,107.5 kg)	29878	3,895.00

* Side stop and free sliding units

** Fixed pin units

† kN = Kilonewtons 1 kN = 224.8089 lb

Order Information

LOAD RATING (PER MODULE)	PART #	PRICE
Non-NTEP Certified 3-Module Kit		
520 lb (2.3 kN†/236.1 kg)	38205	\$3,595.00
1,125 lb (5 kN†/510.8 kg)	17977	2,695.00
2,250 lb (10 kN†/1021.5 kg)	17978	2,695.00
5,200 lb (23 kN†/2,360.8 kg)	17979	2,695.00
11,250 lb (50 kN†/5,107.5 kg)	17980	3,295.00
22,500 lb (100 kN†/10,215.0 kg)	17981	4,095.00
Non-NTEP Certified 4-Module Kit		
520 lb (2.3 kN†/236.1 kg)	38206	4,795.00
1,125 lb (5 kN†/510.8 kg)	17984	3,525.00
2,250 lb (10 kN†/1,021.5 kg)	17985	3,525.00
5,200 lb (23 kN†/2,360.8 kg)	17986	3,525.00
11,250 lb (50 kN†/5,107.5 kg)	17987	4,095.00
22,500 lb (100 kN†/10,215.0 kg)	17988	4,995.00
**Conduit adapter	17703	35.00

**1/2-14 NPT