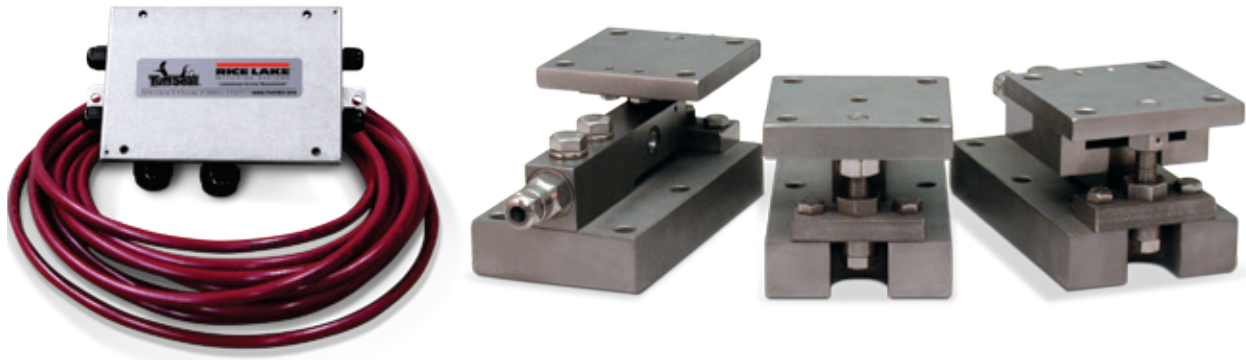


Paramounts® EP

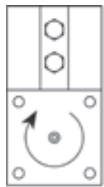
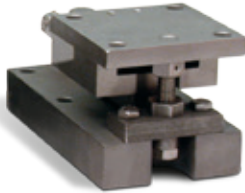
(Environmentally Protected) Mild Steel, Light- to Medium-capacity Tank Weighing Systems



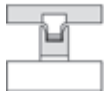
Available in configurations with three or four mounting assemblies.
Picture is a representation of actual product

The Paramounts EP system offers all the design advantages of the Paramounts system in applications where the extensive sealing of the SB4 load cell is not necessary. Paramounts EP provides a low-cost alternative for the superior mechanical loading system found in the standard Paramounts. Economy and performance are in one complete weighing system.

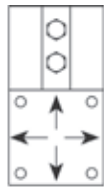
Free-sliding module with Flintec SB5 bending beam load cell.



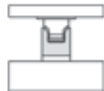
A: FIXED PIN



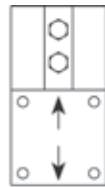
Fixed-pin Mount



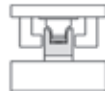
B: FREE SLIDING



Free-sliding Mount



C: SIDE STOP



Side-stop Mount

Standard Features

- Capacities (per module): 1,125 lb-22,500 lb (1 kN/102.1 kg-100 kN/10,205.9 kg)
- NTEP Certified load cells
- Unique design allows for thermal expansion/contraction
- Jacking screw allows empty vessel to be lifted clear of load cell for maintenance
- Unique blind load hole eliminates unwanted side and eccentric loads
- Vessel is free to slide laterally on PTFE-coated surfaces
- Load cell outputs are matched to $\pm 0.07\%$ allowing replacement without further calibration

Applications

- Light to medium-capacity tanks and hoppers
- High-vibration mixers and blenders
- Process measurement and control

Complete Kit Includes

- 1 JB4SS NEMA Type 4X stainless steel signal trim junction box
- 1 fixed-pin module, 1 side-stop module, and 1 or 2 free-sliding assemblies. Each module is complete with a Flintec® SB5 NTEP Certified 1:5000d, Class III, stainless steel environmentally protected load cell.
- 25 ft of our hostile environment EL147HE SURVIVOR® load cell cable

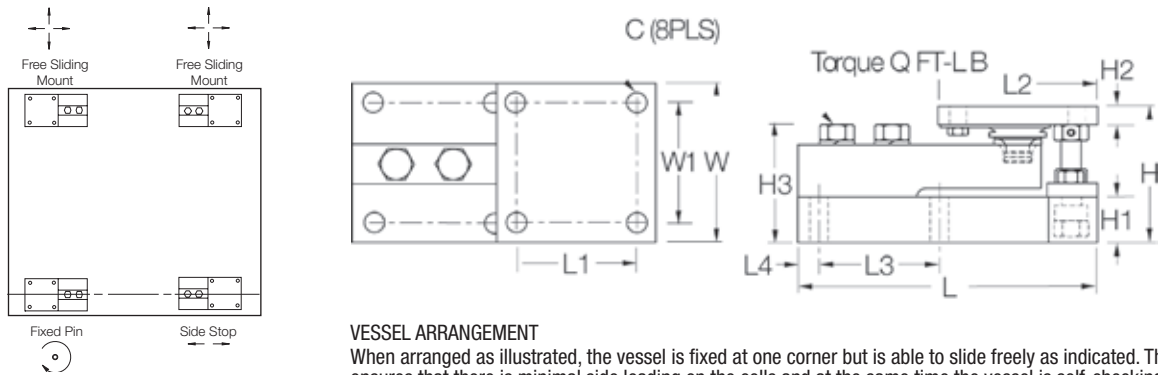
Load Cell Certifications



Available

Paramounts® EP

(Environmentally Protected) Mild Steel, Light- to-Medium-capacity Tank Weighing Systems



VESSEL ARRANGEMENT

When arranged as illustrated, the vessel is fixed at one corner but is able to slide freely as indicated. This ensures that there is minimal side loading on the cells and at the same time the vessel is self-checking. The unique, patented blind load hole technology used in these mounts introduces the load at the neutral axis of the load cell which helps minimize the effects of side loads.

Dimensions

RATED CAPACITY	C	H	H1	*H2	**H2	H3	L	L1	L2	L3	L4	W	W1	Q (FT- LB)
lb/inches														
1,125-4,500 (5-23 kN†)	0.437	3.58	1.25	0.50	0.75	3.06	7.51	3.00	4.00	3.00	0.50	4.00	3.00	65.00
11,250 (50 kN†)	0.562	4.66	1.50	0.62	1.00	4.09	9.19	3.87	5.00	3.87	0.56	5.00	3.87	295.00
22,500 (100 kN†)	0.688	6.41	2.00	0.75	1.25	5.73	11.46	4.75	6.00	4.75	0.69	6.00	4.75	515.00
kg/mm														
510.8-2,041.0	11.1	90.9	31.8	12.7	19.1	77.7	190.8	76.2	101.6	76.2	12.7	101.6	76.2	—
5,107.5	14.3	118.4	38.1	15.7	25.4	103.9	233.4	98.3	127.0	98.3	14.2	127.0	98.3	—
10,215.0	17.5	162.8	50.8	19.1	31.8	145.5	291.1	120.7	152.4	120.7	17.5	152.4	120.7	—

Order Information

LOAD RATING (PER MODULE)	PART #	PRICE
NTEP Certified 3-Module Kits		
1,125 lb (5 kN†/510.8 kg)	33683	\$2,175.00
2,250 lb (10 kN†/1,021.5 kg)	33682	2,175.00
4,500 lb (20 kN†/2,041.2 kg)	33681	2,175.00
11,250 lb (50 kN†/5,107.5 kg)	33680	2,495.00
NTEP Certified 4-Module Kits		
1,125 lb (5 kN†/510.8 kg)	33678	2,900.00
2,250 lb (10 kN†/1,021.5 kg)	33677	2,900.00
4,500 lb (20 kN†/2,041.2 kg)	33676	2,900.00
11,250 lb (50 kN†/5,107.5 kg)	33675	3,695.00
Non-NTEP Certified 3-Module Kit		
22,500 lb (100 kN†/10,205.8 kg)	33679	3,975.00
Non-NTEP Certified 4-Module Kit		
22,500 lb (100 kN†/10,215.0 kg)	33674	4,900.00

* Side stop and free sliding units

** Fixed pin units

† kN = Kilonewtons 1 kN = 224.8089 lb