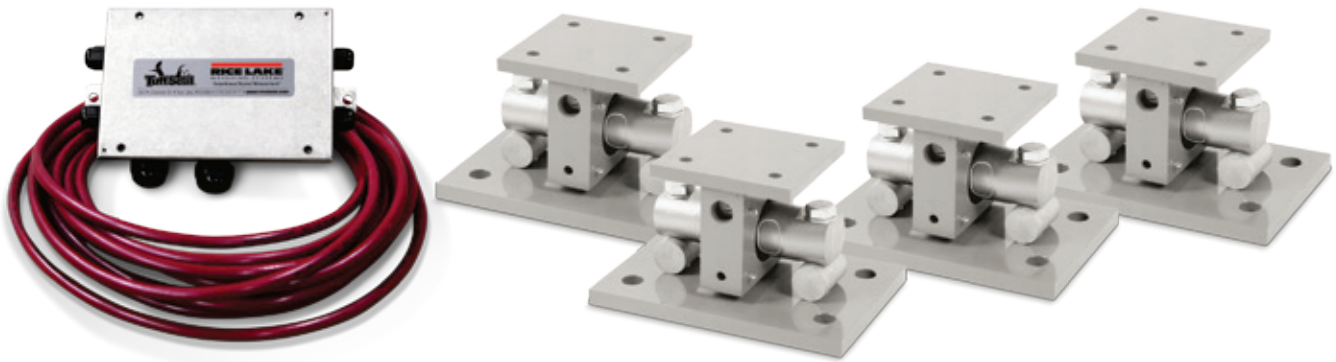


EZ Mount 1

Mild Steel Weigh Modules, Rice Lake Weighing Systems

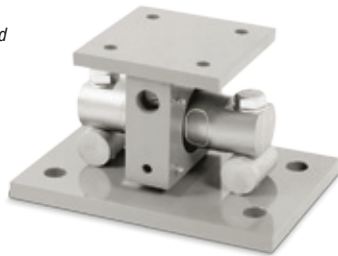


Available in configurations with three or four mounting assemblies.

Picture is a representation of actual product

The EZ Mount 1 Series weigh modules utilize the double-ended beam design with an articulating top plate to provide superior accuracy in any loading condition. The double-ended beam design means there is less cumbersome hardware and each module has a lower profile than modules of different configurations. NTEP Certified and FM approved RL70000 Series load cells give you accuracy and dependability in many applications, including intrinsically safe and explosion proof areas.

Module with RL70000 double-ended shear beam load cell.



Complete Kit Includes

- 1 JB4SS NEMA Type 4X stainless steel signal trim junction box
- 3 or 4 EZ Mount 1 mild steel compression mounts
- 3 or 4 RL70000 double-ended shear beam load cells
- 25 ft of our hostile environment EL147HE SURVIVOR® load cell cable

Applications

- Medium- to heavy-capacity tank and hopper weighing applications

Standard Features

- Capacities (per module): 5,000 lb-250,000 lb (2,268 kg-113,398.1 kg)
- NTEP Certified load cells
- Unique sliding pin design compensates for thermal expansion/contraction
- Self-checking
- Easy load cell replacement
- Simplified design allows bolting directly to tank and floor
- Center-loaded double-ended shear beam design
- Low-profile design
- Painted mild steel construction

Optional Features

- Kits available with VPG® Revere 5103 load cell, capacities in 5,000 lb-150,000 lb (2,268.0 kg-68,039.0 kg)
- Refer to page 91 for shims

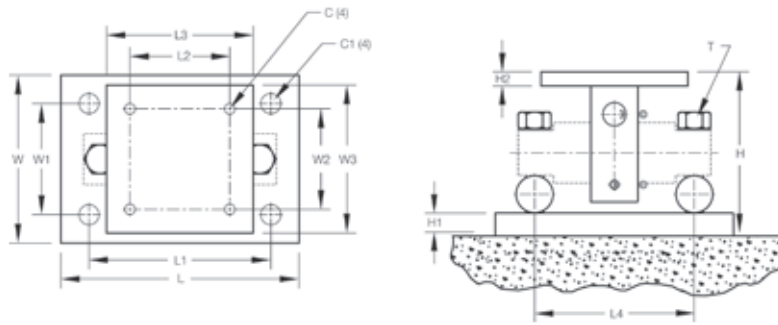
Load Cell Certifications



Rice Lake
load cells only

EZ Mount 1

Mild Steel Weigh Modules, Rice Lake Weighing Systems



Dimensions

RATED CAPACITY	C	C1	H	H1	H2	L	L1	L2	L3	L4	T	W	W1	W2	W3
lb/inches															
5,000-20,000	0.56	1.06	5.31	0.75	0.50	11.00	8.00	3.00	6.00	6.87	5/8-18 UNF	7.50	4.00	3.00	6.00
30,000-60,000	0.68	1.19	8.43	1.00	0.75	15.00	11.50	5.12	8.00	8.50	1-14 UNS	10.00	6.00	5.12	8.00
100,000	0.81	1.38	10.37	1.25	1.25	18.00	14.00	7.50	10.00	9.50	1-14 UNS	12.00	9.00	7.50	10.00
150,000	0.81	1.38	10.37	1.25	1.25	18.00	14.00	7.50	10.00	9.50	1-14 UNS	12.00	9.00	7.50	10.00
200,000-250,000	1.06	1.88	16.75	2.00	2.00	26.00	20.00	9.00	12.00	13.00	1 1/2-12 UNS	12.00	6.00	9.00	12.00
kg/mm															
2,268.0-9,071.9	14.2	26.9	134.9	19.1	12.7	279.4	203.2	76.2	152.4	174.5	5/8-18 UNF	190.5	101.6	76.2	152.4
13,607.8-27,215.5	17.3	30.2	214.1	25.4	19.1	381.0	292.1	130.0	203.2	215.9	1-14 UNS	254.0	152.4	130.1	203.2
45,359.2	20.6	35.1	263.4	31.8	31.8	457.2	355.6	190.5	254.0	241.3	1-14 UNS	304.8	228.6	190.5	254.0
68,039.0	20.6	35.1	263.4	31.8	31.8	457.2	355.6	190.5	254.0	241.3	1-14 UNS	304.8	228.6	190.5	254.0
90,718.5-113,398.1	26.9	47.8	425.5	50.8	50.8	660.4	508.0	228.6	304.8	330.2	1 1/2-12 UNS	304.8	152.4	228.6	304.8

Order Information

LOAD RATING (PER MODULE)	PART #	PRICE
Single Module (Does NOT Include Load Cell)		
5,000 lb-20,000 lb (2,268.0 kg-9,071.9 kg)	17823	\$295.00
30,000 lb-60,000 lb (13,607.8 kg-27,215.5 kg)	17824	795.00
100,000 lb (45,359.2 kg)	17850	1,095.00
150,000 lb (68,039.0 kg)	29012	1,095.00
200,000 lb-250,000 lb (90,719.0 kg-113,398.4 kg)	26068	2,495.00
3-Module Kit		
5,000 lb (2,268.0 kg)	18163	2,875.00
10,000 lb (4,535.9 kg)	18164	2,875.00
20,000 lb (9,071.9 kg)	18165	2,875.00
30,000 lb (13,607.8 kg)	32164	4,545.00
40,000 lb (18,143.7 kg)	32167	4,545.00
50,000 lb (22,679.6 kg)	18166	4,545.00
60,000 lb (27,215.5 kg)	18167	4,545.00
100,000 lb*	18168	7,395.00
150,000 lb (68,040.0 kg)	43290	7,395.00
4-Module Kit		
5,000 lb (2,268.0 kg)	18169	3,735.00
10,000 lb (4,535.9 kg)	18170	3,735.00
20,000 lb (9,071.9 kg)	18171	3,735.00
30,000 lb (13,607.8 kg)	32165	5,765.00
40,000 lb (18,143.7 kg)	32166	5,765.00
50,000 lb (22,679.6 kg)	18172	5,765.00
60,000 lb (27,215.5 kg)	18173	5,765.00
100,000 lb*	18174	9,665.00
150,000 lb (68,040.0 kg)	43291	9,665.00

*Load cell bolts protrude from bottom of base plate
Shims located on page 91

VPG Revere® 5103 Mild Steel Order Information

LOAD RATING (PER MODULE)	PART #	PRICE
3-Module Kit		
5,000 lb (2,268.0 kg)	18175	\$2,975.00
10,000 lb (4,535.9 kg)	18176	2,975.00
20,000 lb (9,071.9 kg)	18177	2,975.00
30,000 lb (13,607.8 kg)	32169	4,645.00
40,000 lb (18,143.7 kg)	32171	4,645.00
50,000 lb (22,679.6 kg)	18178	4,795.00
60,000 lb (27,215.5 kg)	18179	4,795.00
100,000 lb*	18180	7,495.00
150,000 lb (68,039.0 kg)	18181	7,495.00
4-Module Kit		
5,000 lb (2,268.0 kg)	18182	3,835.00
10,000 lb (4,535.9 kg)	18183	3,835.00
20,000 lb (9,071.9 kg)	18184	3,835.00
30,000 lb (13,607.8 kg)	32170	5,865.00
40,000 lb (18,143.7 kg)	32172	5,865.00
50,000 lb (22,679.6 kg)	18185	6,035.00
60,000 lb (27,215.5 kg)	18186	6,035.00
100,000 lb*	18187	9,765.00
150,000 lb (68,039.0 kg)	18188	9,765.00
Dummy Load Cells		
5,000 lb-20,000 lb	33749	75.00
30,000 lb-60,000 lb	74016	95.00
100,000 lb	94175	150.00
150,000 lb	158715	225.00
Grounding Kit		
126419	5,000-60,000, includes ground strap and mounting hardware per mount	15.45