

TSA Truck Scale Assembly

Rice Lake Weighing Systems

Applications

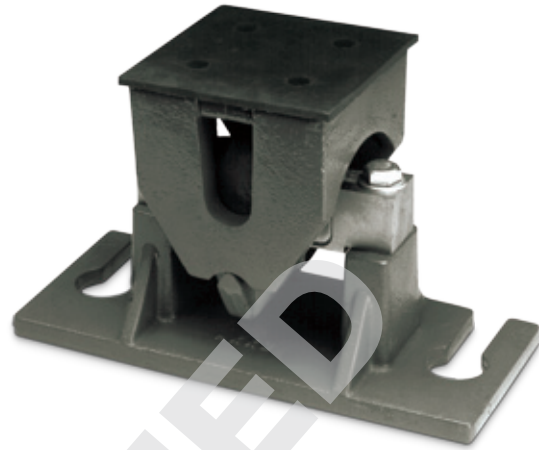
- Truck, track, horizontal tank or general purpose
- Light-duty livestock to heavy-duty vehicle scales

Standard Features

- Capacities: 10,000 lb-75,000 lb (4,535.9 kg-34,019.4 kg)
- Constructed of cast steel and iron with primer coating
- Unique high-performance Unilink suspension system
- Center-loaded double-ended shear beam design
- Self-checking design
- Rubber pad provided for mounting

Optional Features

- 20,000 lb-75,000 lb (9,071.9 kg-34,019.4 kg) capacity NTEP Certified load cells available for 1:10,000d, Class III



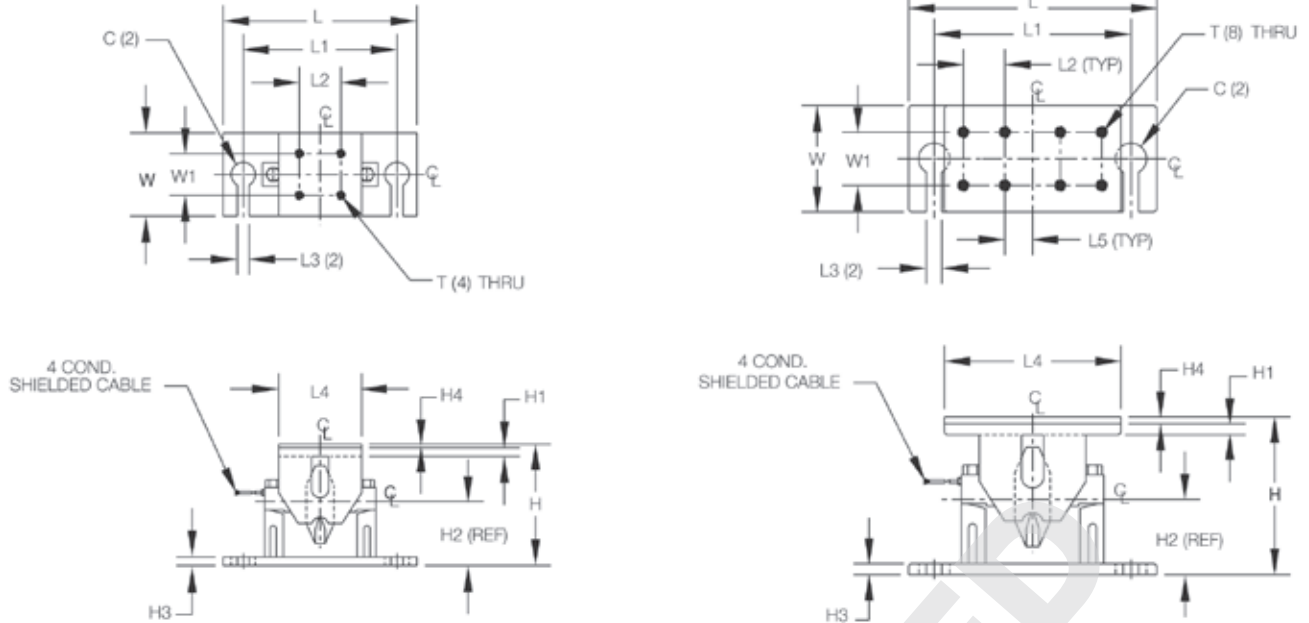
Mount only; does not include load cell

Picture is a representation of actual product

The TSA truck scale assembly is designed for use with Rice Lake Weighing Systems' RL75058 or VPG Sensortronics® 65058. The Unilink suspension design checks lateral movement of the assembly, while controlled floating of the scale deck is allowed. The effective integration of the TSA mount and the double-ended shear beam load cell eliminates the need for troublesome check rods, links, expansion assemblies and other peripheral hardware.

TSA Truck Scale Assembly

Rice Lake Weighing Systems



Dimensions

RATED CAPACITY	C	H	H1	H2	H3	H4	L	L1	L2	L3	L4	L5	T	W	W1
lb/inches															
10,000-25,000	1.75 dia.	8.75	0.62	4.62	0.62	0.25	14.00	11.00	3.00	0.88	6.00	—	5/8-11 UNC-2B	6.00	3.00
50,000-75,000	2.00 dia.	11.00	0.75	5.44	0.75	0.50	18.00	14.00	3.00	0.88	12.75	2.00	3/4-10 UNC-2B	7.00	3.50
kg/mm															
4,535.9-11,339.8	44.5 dia.	222.3	15.7	117.3	15.7	6.4	355.6	279.4	76.2	22.4	152.4	—	5/8-11 UNC-2B	152.4	76.2
22,679.6-34,019.4	50.8 dia.	279.4	19.1	138.2	19.1	12.7	457.2	355.6	76.2	22.4	323.9	50.8	3/4-10 UNC-2B	177.8	88.9

Order Information

LOAD RATING (PER MODULE)	PART #	PRICE
10,000 lb-20,000 lb-25,000 lb	(4,535.9 kg-9,071.9 kg-11,339.8 kg)	17821 Call
50,000 lb-60,000 lb-75,000 lb	(22,679.6 kg-27,215.5 kg-34,019.4 kg)	17822 Call