

RLC

Stainless Steel Weigh Modules, VPG Revere



Available in configurations with three or four mounting assemblies.
Picture is a representation of actual product

The RLC self-aligning silo mount, together with the RLC load cell family, are an ideal solution for process control, batch weighing, silo/hopper and belt scale applications. The RLC mount incorporates a removable rocker pin design, that uses hardened stainless steel components on all load-bearing surfaces. The fully stainless steel construction guarantees long-term reliability, even in the harshest environments.

Module with hermetically sealed RLC compression canister load cell.



Standard Features

- Capacities (per module): 0.5t-5t (1,102.3lb-11,023.1 lb)
- Matched output load cells eliminate trimming
- 304 stainless steel construction
- Rocker pin design allows movement in all directions
- Hermetically sealed, IP66/68 stainless steel load cells
- Easy load cell replacement
- Integral jacking/shipping bolts

Applications

- Medium-capacity tanks, bins and hoppers
- Washdown or corrosive applications
- Process control and batch weighing

Complete Kit Includes

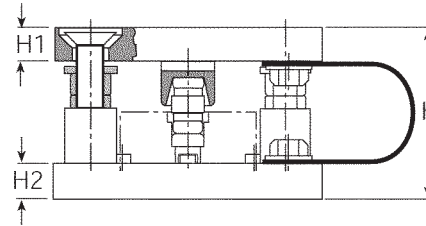
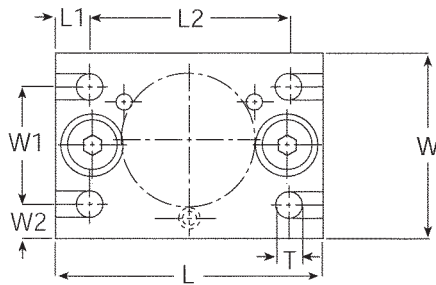
- 1 JB4SS NEMA Type 4X stainless steel signal trim junction box
- 3 or 4 RLC stainless steel compression mounts
- 3 or 4 RLC stainless steel hermetically sealed compression disk load cells
- 25ft of our hostile environment EL147HE SURVIVOR® load cell cable

Load Cell Certifications



RLC

Stainless Steel Weigh Modules, VPG Revere



Dimensions

RATED CAPACITY	H	H1	H2	L	L1	L2	T	W	W1	W2
ton/mm										
0.5-1	80.00	20.00	15.00	150.00	15.00	120.00	14 (top plate)	100.00	70.00	15.00
2-5	100.00	20.00	20.00	160.00	20.00	120.00	13.8 (bottom plate)	110.00	70.00	20.00
lb/inches										
1,102.3-2,204.6	3.15	0.79	0.59	5.91	0.59	4.72	0.55 (top plate)	3.94	2.76	0.59
4,409.2-11,023.1	3.94	0.79	0.79	6.30	0.79	4.72	0.54 (bottom plate)	4.33	2.76	0.79

Order Information

LOAD RATING (PER MODULE)	PART #	PRICE
Single Module (Includes Load Cell)		
0.5t (1,102.3 lb)	36401	\$1,075.00
1t (2,204.6 lb)	36402	1,075.00
2t (4,409.2 lb)	36403	1,245.00
3.5t (7,717.5 lb)	36404	1,245.00
5t (11,023.1 lb)	36405	1,245.00
3-Module Kit		
0.5t (1,102.3 lb)	36406	3,475.00
1t (2,204.6 lb)	36407	3,475.00
2t (4,409.2 lb)	36408	3,640.00
3.5t (7,717.5 lb)	36409	3,640.00
5t (11,023.1 lb)	36410	3,640.00
4-Module Kit		
0.5t (1,102.3 lb)	36411	4,550.00
1t (2,204.6 lb)	36412	4,550.00
2t (4,409.2 lb)	36413	4,855.00
3.5t (7,717.5 lb)	36414	4,855.00
5t (11,023.1 lb)	36415	4,855.00

Replacement Rocker Pin Set*

LOAD RATING (PER MODULE)	PART #	PRICE
250 kg-1 t	170875	\$108.00
2t-5t	170876	108.00
10t	170877	108.00

*Kit includes upper cup, rocker pin and grease