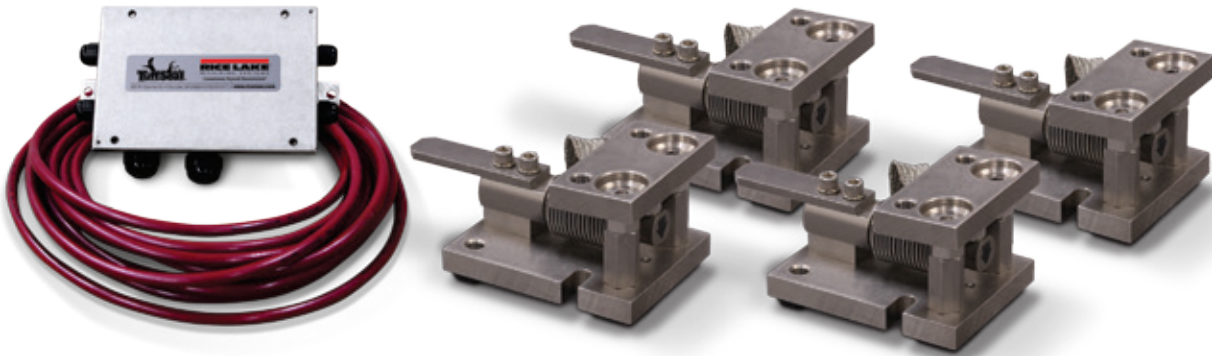


RL1700 HE

Light- to Medium-capacity Weigh Modules



Picture is a representation of actual product

The RL1700 HE offers precision-machined, weldless construction to maximize pressure washdown cleaning effectiveness. This design, coupled with integral jacking/shipping bolts, eases installation and minimizes maintenance costs. OIML C3-certified load cells in capacities from 5 kg to 5,000 kg provide accurate, consistent weightments. Ideal for multi-ingredient micro-batching applications, the RL1700 HE provides exceptional performance in hostile environments. The unique design of the RL1700 HE isolates the load cell from side loads, overloads, minimizing load cell mechanical damage and eliminating the need for extraneous hardware. The RL1700 HE offers a guaranteed waterproof rating to ensure reliable performance in moisture-laden environments.

Standard Features

- All stainless steel construction
- Hermetically sealed, stainless steel load cells, IP66/68, guaranteed waterproof
- OIML certified load cells from 5 kg-5,000 kg
- Bolt-in-place design; module bolts directly to tank leg without requiring additional load buttons or mounting plates
- Self-checking with lift-off/tip-over protection and jacking/shipping bolts
- Load cell is isolated from overload in all directions
- Weldless construction retains less residue and allows fast, thorough cleaning
- Two-year limited warranty

Applications

- Multi-ingredient micro-batching
- Meat and poultry processing
- Chemical batching/blending
- Dye/ink blending

Complete Kit Includes

- 1 JB4SS NEMA Type 4X stainless steel signal-trim junction box
- 3 or 4 RL1700 HE stainless steel compression mounts
- 3 or 4 RLHBB (5 kg-250 kg) or RLHTO (500 kg-5000 kg) stainless steel, hermetically sealed single-ended beam load cells
- 25 ft of our hostile environment EL147HE SURVIVOR® load cell cable

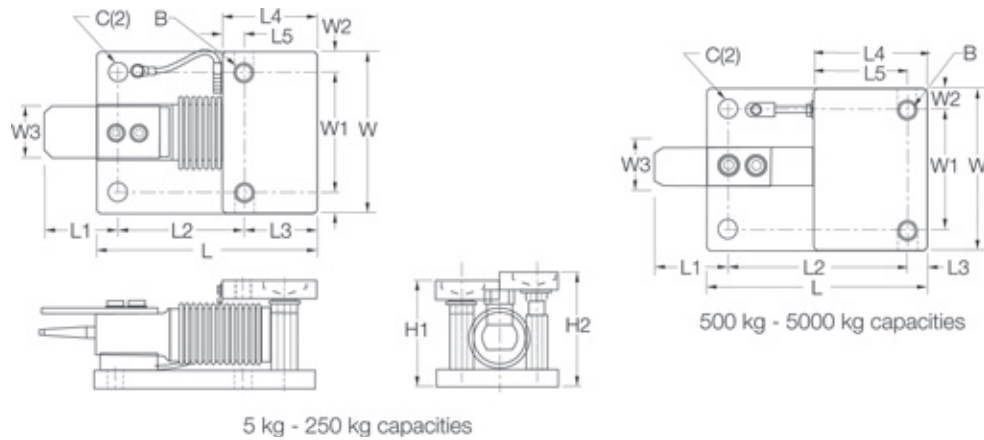
Load Cell Certifications



Available upon request

RL1700 HE

Light- to Medium-capacity Weigh Modules



Dimensions

RATED CAPACITY	C	B	*H1	**H2	L	L1	L2	L3	L4	L5	W	W1	W2	W3
kg/mm														
5-250	12.9	1/2-20 UNF	80.0	86.1	131.8	64.0	76.0	42.0	56.0	14.0	96.0	70.0	13.0	25.4
500-2,000	20.0	5/8-18 UNF	101.6	109.1	165.0	70.0	130.0	15.0	80.0	64.5	110.0	70.0	20.0	30.0
5,000	20.0	3/4-10 UNF	135.0	143.0	215.0	81.0	161.0	20.0	90.0	70.5	150.0	90.0	30.0	40.0
lb/inches														
11-550	0.40	1/2-20 UNC	3.13	3.39	5.19	2.52	2.99	1.65	2.20	0.55	3.99	2.76	0.51	1.00
1,100-4,400	0.78	5/8-18 UNC	4.00	4.32	6.50	2.76	5.12	0.59	2.97	2.54	4.33	2.76	0.79	1.18
11,000	0.78	3/4-10 UNC	5.31	5.63	8.46	3.19	6.34	0.79	3.56	2.78	5.91	3.54	1.18	1.57

* In weighing position

** In jacked-up position for load cell shipping or removal

Order Information

LOAD RATING (PER MODULE)	PART #	PRICE
OIML C3-Certified Load Cells Included		
5 kg (11.0 lb)	32687	\$835.00
10 kg (22.0 lb)	32688	835.00
20 kg (44.1 lb)	32689	835.00
50 kg (110.2 lb)	32690	835.00
100 kg (220.5 lb)	32691	835.00
200 kg (440.9 lb)	32692	835.00
250 kg (551.2 lb)	32693	835.00
500 kg (1,102.3 lb)	32974	1,015.00
1,000 kg (2,204.6 lb)	32973	1,015.00
2,000 kg (4,409.2 lb)	32972	1,015.00
5,000 kg (11,023.1 lb)	32971	1,250.00

Order Information

LOAD RATING (PER MODULE)	PART #	PRICE
3-Module Kit		
5 kg (11.0 lb)	32920	\$2,700.00
10 kg (22.0 lb)	32921	2,700.00
20 kg (44.1 lb)	32922	2,700.00
50 kg (110.2 lb)	32923	2,700.00
100 kg (220.5 lb)	32924	2,700.00
200 kg (440.9 lb)	32925	2,700.00
250 kg (551.2 lb)	32926	2,700.00
500 kg (1,102.3 lb)	32980	3,205.00
1,000 kg (2,204.6 lb)	32981	3,205.00
2,000 kg (4,409.2 lb)	32982	3,205.00
5,000 kg (11,023.1 lb)	32983	4,050.00
4-Module Kit		
5 kg (11.0 lb)	32927	3,540.00
10 kg (22.0 lb)	32928	3,540.00
20 kg (44.1 lb)	32929	3,540.00
50 kg (110.2 lb)	32930	3,540.00
100 kg (220.5 lb)	32931	3,540.00
200 kg (440.9 lb)	32932	3,540.00
250 kg (551.2 lb)	32933	3,540.00
500 kg (1,102.3 lb)	32984	4,220.00
1,000kg (2,204.6 lb)	32985	4,220.00
2,000 kg (4,409.2 lb)	32986	4,220.00
5,000 kg (11,023.1 lb)	32987	4,995.00