



# Stancor Series CB 2002 Three Phase Duplex Controller

## GENERAL DESCRIPTION

Stancor's Series CB2002 Duplex controllers offer dependable, automatic operation of two three phase pumps. The standard features and optional functions provide the user with the flexibility needed for servicing a variety of sump, ejector or tank applications. Stancor Duplex controls can be used with any Stancor float switches, and are also compatible with various diaphragm or vertical rod switches. Controls are available in 208, 230, 460 or 575 volt configurations

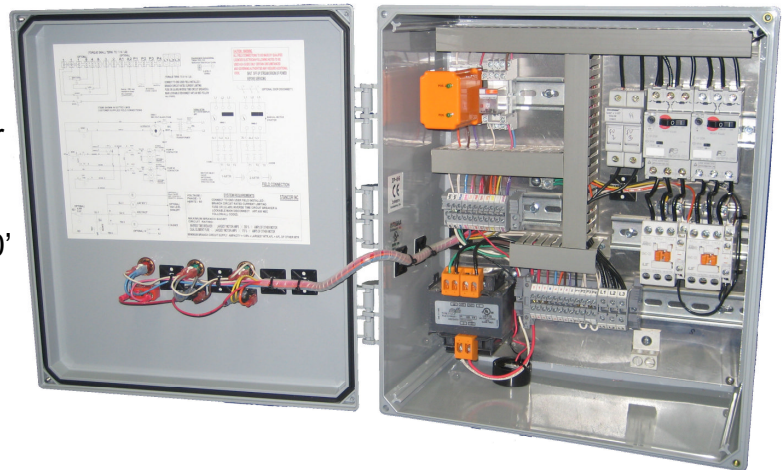
## STANDARD FEATURES

- NEMA 4X Corrosion Resistant, Outdoor rated Enclosure
- Individual Pump Circuit Breakers
- Individual Pump Contactors
- Transformer
- Automatic pump alternator
- Separate fused Control Circuit
- Green Pump Run Lights (each pump) (Door Mounted)
- Manual-Off-On-Auto Selector Switch (each pump) (Door Mounted)
- Individual Terminals For Field Wiring
- Circuit Wiring Diagram



## OPTIONAL FEATURES

- A. High Water Alarm. A red LED light, buzzer, and Test-Silence switch are furnished. (Door Mounted)
- B. Strobe lights
- C. Mechanical Float Switches with 20', thru 120' cords. (Specify)
- D. Dry contacts for remote alarm signal.
- E. Door mounted hour meters
- F. Door mounted interlocking disconnects
- G. Seal leak detection
- H. Stainless steel enclosures with window viewing door
- I. Others available upon request



## Stancor, Inc.

515 Fan Hill Road, Monroe, CT 06468

203-268-7513 • FAX 203-268-7958 • [www.stancorpumps.com](http://www.stancorpumps.com)