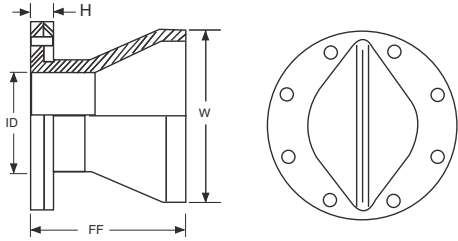




DB Series

Duckbill Check Valves

Cla-Val Series DBF Duckbill Flanged Style Check Valves feature an integral, metal-backed, rubber flange for attaching directly to flanged-end connections from tank or head wall. A variety of elastomers allow DBF valves to be used with many different fluids. When ordering, specify Model DBF, valve ID size, flange drilling, and add first letter of elastomer material IE: 4"-DB-N (N for Neoprene)



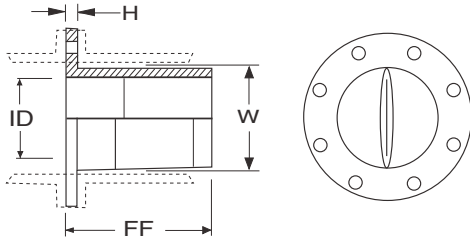
For the DBF Duckbill dimensions, www.cla-val.com

Note 1:
Dimensions are for clearance purposes only. Actual product dimensions may vary based upon specific application requirements.

Note 2:
Larger sizes are available, contact local office for pricing.



Cla-Val Series DBI Duckbill In-Line Flanged Style Check Valves are for pressurized pipeline applications where it is inserted between pipe flanges. Cla-Val Series DBI Duckbill In-Line Flanged Style Check Valves have an integral, metal-backed, rubber flange for attaching directly to flanged-end pipe connections. A variety of elastomers allow DBI valves to be used with many fluids. When ordering, specify Model DBI, pipe ID size, flange drilling, and add first letter of elastomer material. IE: 4"-DBI-N (N for Neoprene)



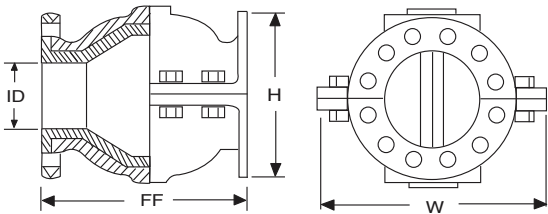
For the DBI Duckbill dimensions, www.cla-val.com

Note 1:
Dimensions are for clearance purposes only. Actual product dimensions may vary based upon specific application requirements.

Note 2:
Larger sizes are available, contact local office for pricing.



Cla-Val Series DBJ Duckbill Jacket Style Check Valves feature all-metal enclosures for installation in pipelines as a whisper quiet, non-slamming, low-maintenance, low pressure-drop check valve. A variety of elastomers allow DBJ valves to be used with many different fluids. When ordering, specify Model DBJ, nominal pipe, flange drilling, and add first letter of elastomer material IE: 4"-DBJ-N (N for Neoprene)



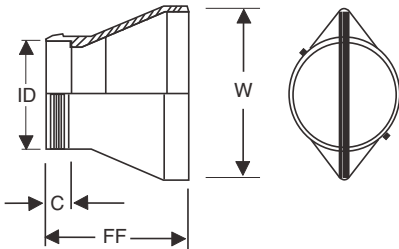
For the DBJ Duckbill dimensions, www.cla-val.com

Note 1:
Dimensions are for clearance purposes only. Actual product dimensions may vary based upon specific application requirements.

Note 2:
Larger sizes are available, contact local office for pricing.



Cla-Val Series DBO Duckbill Slip-Over Style Check Valves feature a soft sleeve end for slip over connection to pipe end and fastened with stainless steel clamp for low inlet pressure applications. A variety of elastomers allow DBO valves to be used with many different fluids. When ordering, specify Model DBO, pipe OD size, and add first letter of elastomer material. E: 4"-DBO-N (N for Neoprene)



For the DBO Duckbill dimensions, www.cla-val.com

Note 1:
Dimensions are for clearance purposes only. Actual product dimensions may vary based upon specific application requirements.

Note 2:
Larger sizes are available, contact local office for pricing.

