



MODEL **81-12**
(Full Internal Port)
681-12
(Reduced Internal Port)

Check Valve



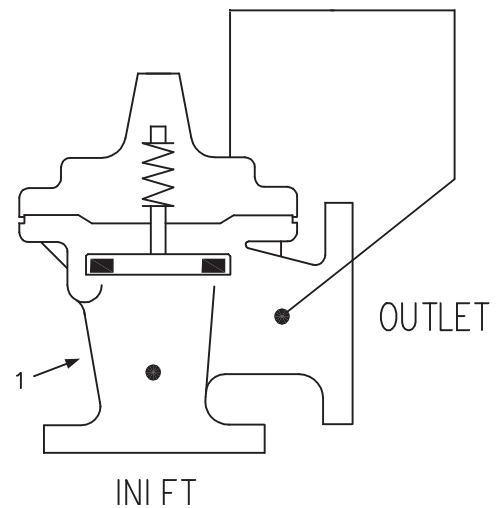
- Simple Proven Design
- No-Slam Operation
- Drip-Tight Shut-Off
- Recommended for Variable Speed Pumps
- No Packing Glands or Stuffing Boxes
- Easy to Install & Maintain

The Cla-Val Model 81-12 Check Valve is a hydraulically operated No-Slam Check Valve. This valve opens when the pressure at the inlet exceeds the discharge pressure. A gradual rate of opening prevents sudden opening surges. When a pressure reversal occurs the higher downstream pressure is applied to the cover chamber through the control tube lines, and the valve closes drip tight.

This valve is ideally suited for use where a positive shutoff is required. The rubber disc assures tight sealing even if the fluid contains grit or other small-size particles. The simple packless design insures reliable operation and freedom from leaks.

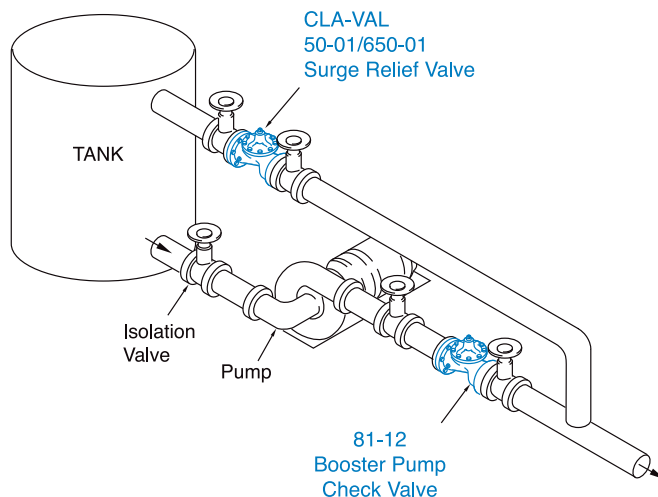
Schematic Diagram

Item	Description
1	100-01 Hytrol Main Valve



Product Dimensions Data:

For the 81-12 Main Valve (100-01) dimensions, see pages 17.



Typical Applications

Install on the discharge of booster pumps to prevent return flow when pump is off. Relief valve as shown is good practice to minimize surges when pump stops.

For valve sizes 3" and larger consult factory