

# RL9000TWM-HT

Tank, Hopper and Vessel Weighing Module

## Standard Features

- Capacities: 1,000 lb-50,000 lb
- Very low profile design
- 3 mV/V output
- Self-centering
- Self-checking assembly
- Offers 100% side load, 100% uplift and 150% safe load and 300% ultimate overload protection
- Stainless steel construction
- Welded seal
- Weighs accurately with as much as a 3° on-parallel load
- Complete with 25 ft FEP cable

## Optional Features

- Stainless steel top plates
- Higher capacities available upon request

## Applications

- Tank, hopper, or vessel weighing
- High temperature applications

## Load Cell Specifications

### Full Scale Output:

3 (± 0.1%) mV/V

### Bridge Resistance:

700 ohms

### Material/Finish:

Stainless steel\*

### Safe Overload:

150% full scale

### Rated Excitation:

5-10VDC

### Operating Temperature:

0° F to 400° F

### Insulation Resistance:

5,000 megohms

### Seal Type:

Welded seal IP67

### Cable Length:

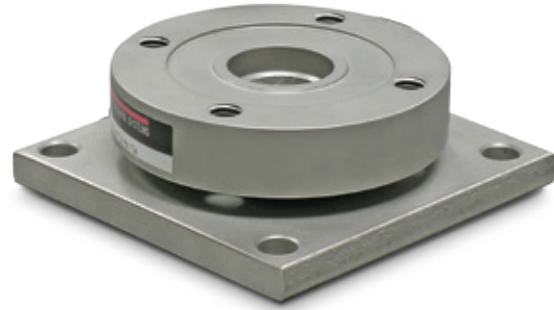
25 ft FEP jacket

### Cable Color Code:

Green .....+ Excitation  
 Black.....- Excitation  
 White .....+ Signal  
 Red .....- Signal

### Warranty:

Two-year limited warranty



Picture is a representation of actual product

The RL9000TWM-HT is the latest addition to the popular RL9000TWM Series weigh module. The RL9000TWM-HT is a high temperature version that is designed to operate in temperatures up to 400°F.

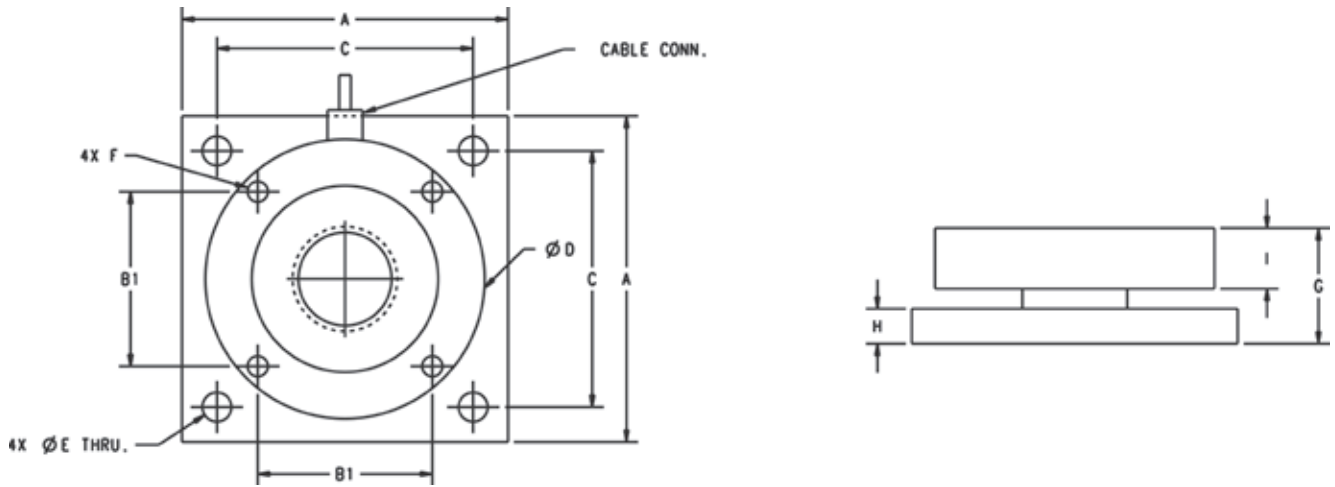
The integral 25 ft of FEP cable complements the RL9000TWM-HT weigh module.

## Order Information

LOAD RATING (PER MODULE)	PART #	PRICE
<b>Single Module</b>		
1,000 lb	117050	\$1,025.00
2,500 lb	117051	1,025.00
5,000 lb	117052	1,025.00
10,000 lb	117140	1,025.00
15,000 lb	117053	1,025.00
20,000 lb	117054	1,725.00
25,000 lb	117055	1,725.00
35,000 lb	117056	1,725.00
50,000 lb	117057	1,725.00
<b>Top Plates (Stainless Steel) with bolts</b>		
1,000 lb-15,000 lb	91207	150.00
20,000 lb-50,000 lb	91210	325.00
<b>Top Plates (Mild Steel) with bolts</b>		
1,000 lb-15,000 lb	124758	75.00
20,000 lb-50,000 lb	125141	145.00

# RL9000TWM-HT

Tank, Hopper and Vessel Weighing Module



## Dimensions

RATED CAPACITY	A	B1	C	D	E	F	G	H	I	CONDUIT ADAPTER
lb/inches										
1,000 lb - 10,000 lb	4.00	2.00	3.25	3.50	0.40	3/8-16NC	1.35	0.375	0.75	—
15,000 lb	4.00	2.00	3.25	3.50	0.40	3/8-16NC	1.60	0.625	0.75	—
20,000 lb - 50,000 lb	7.00	3.75	5.50	6.00	0.63	1/2-13NC	2.48	0.750	1.30	1/2-14NPT