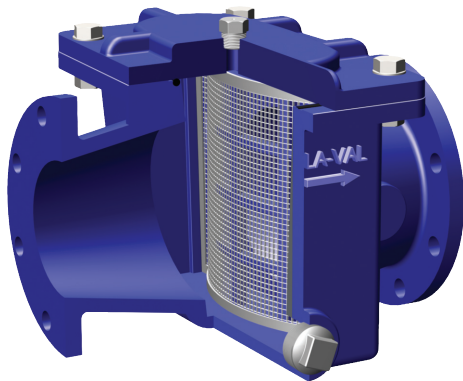




— MODEL — **X43H**

# H Style Strainer



- Low Pressure Drop
- Ductile Iron Fusion Bonded Epoxy Coated Construction with a 316 Stainless Steel Strainer
- Large Flow Area H-Style Design
- Service Without Removal From Line
- The materials of construction and epoxy coating used in this product meets the intent of the federal NSF-61 lead content mandate.

Now available up to 48-inches

The Cla-Val Model X43H H-Style Strainer offers an effective means of removing unwanted solid particles in pipeline flow. These strainers are ideal for preventing fouling, debris and particle buildup in Cla-Val Automatic Control Valves. The large flow area design, with a flat stainless steel strainer mesh perpendicular to flow, is optimized for low pressure drop applications. Maintenance is fast and easy with the compact H-pattern, requiring only top cover removal. Though the strainer may be installed in any position, installation with the cover up is recommended.

## Specifications

<b>Sizes (Inches):</b>	1½, 2, 2½, 3, 4, 6, 8, 10, 12, 14, 16, 18, 20, 24, 36 and 48
<b>Sizes (mm):</b>	40, 50, 65, 80, 100, 150, 200, 250, 300, 350, 400, 450, 500, 600, 900, 1200
<b>Ends:</b>	Flanged, ANSI Class 150 and 300 *
<b>Max Pressure Rating:</b>	150# - 250 psi • 300# - 400 psi
<b>Fluids:</b>	Compatible with Materials of Construction
<b>Temperature:</b>	Maximum 175°F
<b>Materials:</b>	
<b>Body &amp; Cover:</b>	Ductile Iron ANSI B16.42; Fusion Bonded Epoxy Coating Standard
<b>Cover Seal:</b>	Buna-N® Synthetic Rubber
<b>Strainer:</b>	316 Stainless Steel; Ductile Iron, Epoxy Coated Frame
<b>Strainer Mesh Sizes:</b>	Standard 10 mesh / 2000 Micron / Openings 0.078 inch Optional .039 and .059 inch openings available
	Drain/Blow-Off connection furnished with Standard Stainless Steel Plug
<b>Cover Fasteners:</b>	Stainless Steel

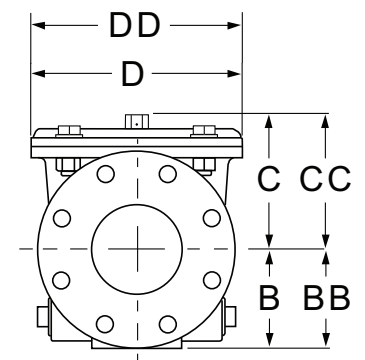
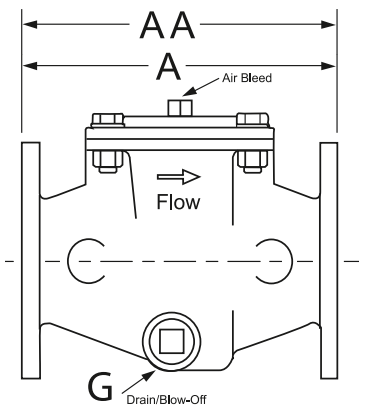
Please consult factory to confirm dimensional data for 36-inch/900 mm and 48/1200 mm sizes

## Dimensions

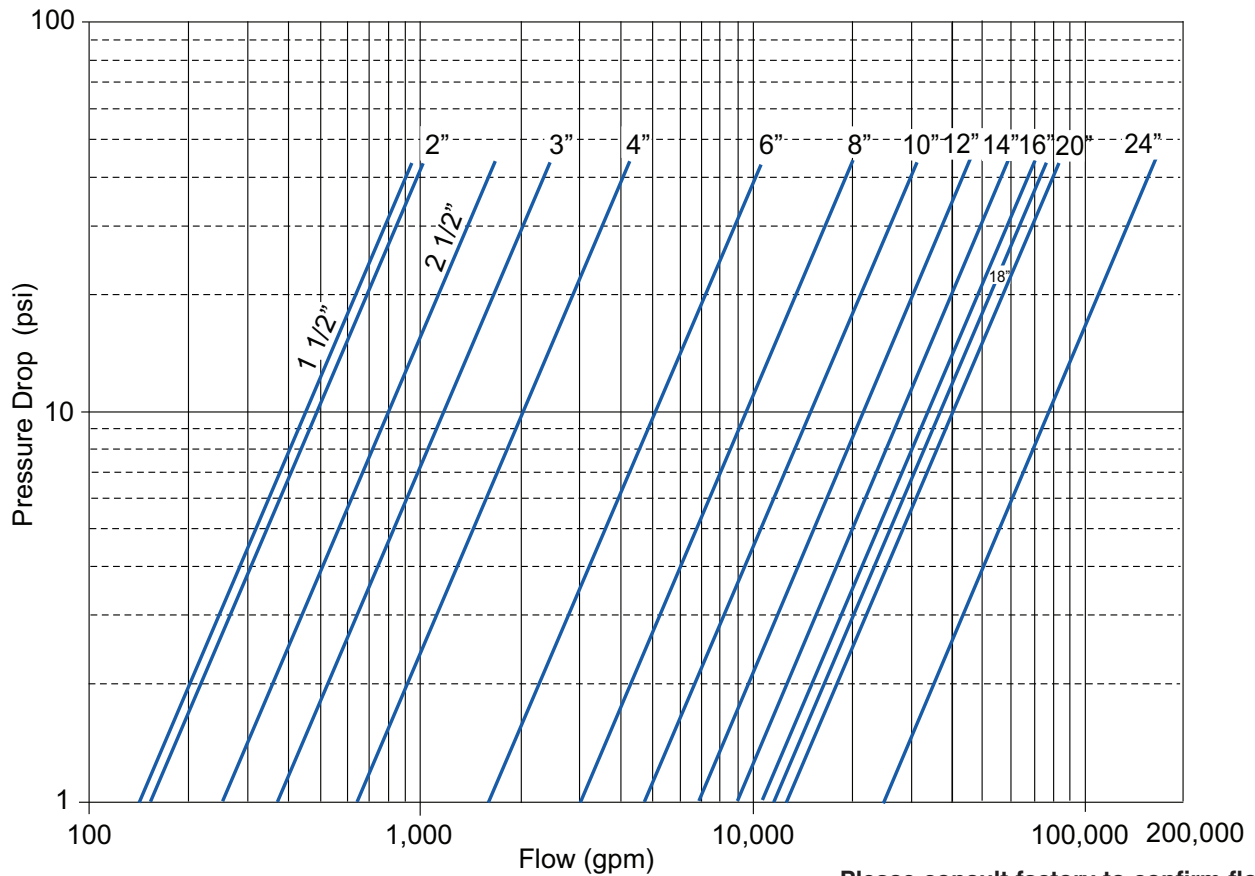
\*Note: 300# Flanges are Raised Face

Strainer Size (inches)	1 ½	2	2 ½	3	4	6	8	10	12	14	16	18	20	24
<b>A 150 ANSI</b>	9.06	9.06	9.06	11.81	11.81	15.75	19.69	22.83	24.02	25.59	31.50	31.50	37.40	43.31
<b>AA 300 ANSI</b>	9.13	9.13	9.13	11.89	11.89	15.83	19.76	22.91	24.09	25.67	31.57	31.57	37.48	43.39
<b>B 150 ANSI</b>	3.26	3.26	3.66	4.06	4.33	5.63	6.69	8.86	8.88	10.24	12.20	13.18	19.09	19.09
<b>BB 300 ANSI</b>	3.26	3.26	3.66	4.06	4.33	5.63	6.69	8.86	9.56	10.94	12.20	13.18	19.09	19.09
<b>C Max. 150 ANSI</b>	3.78	3.78	3.78	5.91	5.91	7.52	8.82	11.61	15.16	14.96	19.69	19.69	23.98	23.98
<b>CC Max. 300 ANSI</b>	5.20	5.20	5.35	6.22	6.22	7.99	9.33	12.79	15.67	15.67	19.69	19.69	23.98	23.98
<b>D Dia. 150 ANSI</b>	7.87	7.87	7.87	9.25	9.25	15.74	18.11	22.05	26.77	26.77	35.43	35.43	46.85	46.85
<b>DD Dia. 300 ANSI</b>	7.99	7.99	7.99	9.37	9.37	15.86	18.23	22.17	26.85	26.85	35.43	35.43	46.85	46.85
<b>G Drain/Blow-off Plug</b>	1¼	1¼	1¼	1¼	1¼	1¼	1¼	1¼	2	2	2	2	3	3
Approx. Ship Wt. Lbs.	33	36	39	59	73	143	212	432	626	683	970	1073	1175	1962

Strainer Size (mm)	40	50	65	80	100	150	200	250	300	350	400	450	500	600
<b>A 150 ANSI</b>	230	230	230	300	300	400	500	580	610	650	800	800	950	1100
<b>AA 300 ANSI</b>	232	232	232	302	302	402	502	582	612	652	802	802	952	1102
<b>B 150 ANSI</b>	83	83	93	103	110	143	170	225	228	260	310	335	485	485
<b>BB 300 ANSI</b>	83	83	93	103	110	143	170	225	243	278	310	335	485	486
<b>C Max. 150 ANSI</b>	96	96	96	150	150	191	224	295	385	380	500	500	609	609
<b>CC Max. 300 ANSI</b>	132	132	136	158	158	203	237	325	398	398	500	500	609	609
<b>D Dia. 150 ANSI</b>	200	200	200	235	235	400	460	560	680	680	900	900	1190	1190
<b>DD Dia. 300 ANSI</b>	203	203	203	238	238	403	463	563	682	682	900	900	1190	1190
<b>G Drain/Blow-off Plug</b>	1¼	1¼	1¼	1¼	1¼	1¼	1¼	1¼	2	2	2	2	3	3
Approx. Ship Wt. (kg)	15	16	18	27	33	65	96	196	284	310	440	600	810	890



## Model X43H Flow Chart



Please consult factory to confirm flow data for 36-inch/900 mm and 48/1200 mm strainers

## C<sub>v</sub> Factor

Strainer Size (inches)	1 ½	2	2 ½	3	4	6	8	10	12	14	16	18	20	24
C <sub>v</sub> (Gal/Min. - gpm.)	96	150	254	367	654	1644	3922	4566	6800	8949	11692	12796	18264	26302
C <sub>v</sub> (Litres/Sec - l/s.)	23	36	61	85	157	395	702	1097	1580	2150	2809	3555	4388	6319

## Model X43H Strainer Typical Application

