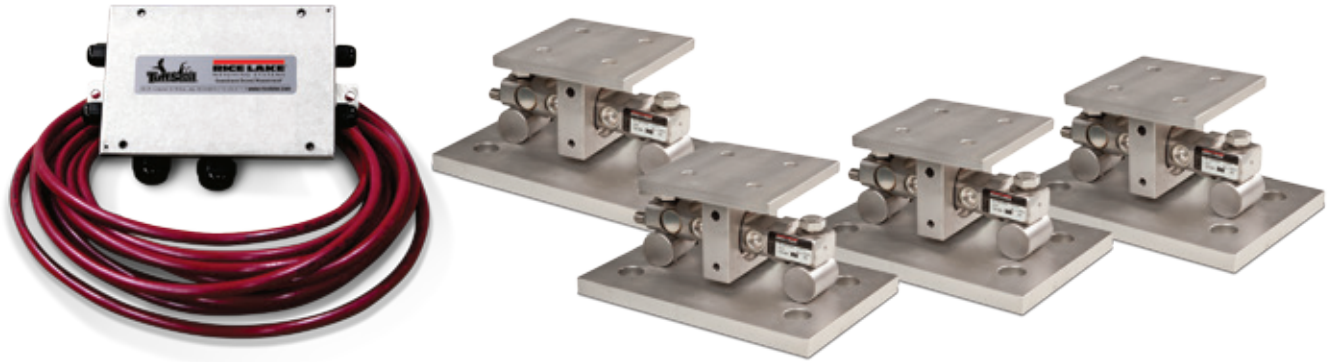


## EZ Mount 1 HE

Stainless Steel Weigh Modules, Hermetically Sealed, Rice Lake Weighing Systems



Available in configurations with three or four mounting assemblies.

Picture is a representation of actual product

The EZ Mount 1 HE Series weigh modules utilize the double-ended beam design with an articulating top plate to provide superior accuracy in any loading condition. The double-ended beam design means there is less cumbersome hardware and each module has a lower profile than modules of different configurations. The RL72010 MH Series load cells give you accuracy and dependability in any environment. Their stainless steel, hermetically sealed design also make them the ideal solution in harsh environments where moisture is present.

Module with RL72010MH double-ended shear beam load cell.



### Complete Kit Includes

- 1 JB4SS NEMA Type 4X stainless steel signal trim junction box
- 3 or 4 EZ Mount 1 stainless steel compression mounts
- 3 or 4 RL72010 MH hermetically sealed stainless steel double-ended shear beam load cells
- 25 ft of our hostile environment EL147HE SURVIVOR® load cell cable

### Applications

- Medium to heavy-capacity tank and hopper weighing applications

### Standard Features

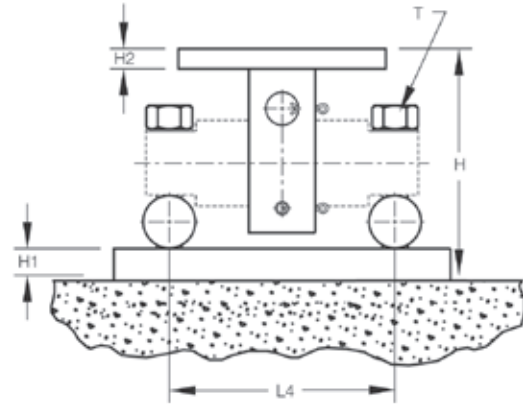
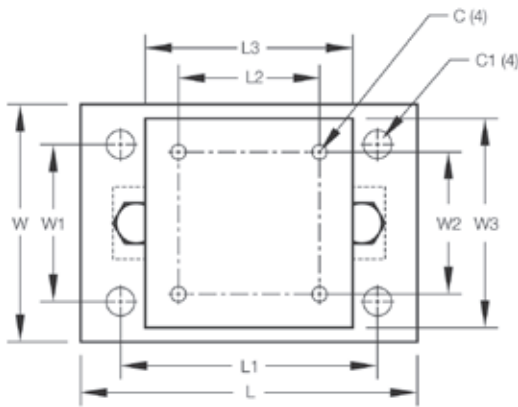
- Capacities (per module): 5,000 lb-60,000 lb (2,268 kg-27,216.0 kg)
- Unique sliding pin design compensates for thermal expansion/contraction
- Self-checking
- Easy load cell replacement
- Simplified design allows bolting directly to tank and floor
- Center-loaded, double-ended shear beam design
- Low-profile design
- 304 stainless steel construction

### Load Cell Certifications



# EZ Mount 1 HE

Stainless Steel Weigh Modules, Hermetically Sealed, Rice Lake Weighing Systems



## Dimensions

RATED CAPACITY	C	C1	H	H1	H2	L	L1	L2	L3	L4	T	W	W1	W2	W3
<b>lb/inches</b>															
5,000-20,000	0.56	1.06	5.31	0.75	0.50	11.00	8.00	3.00	6.00	6.87	5/8-18 UNF	7.50	4.00	3.00	6.00
30,000-60,000	0.68	1.19	8.43	1.00	0.75	15.00	11.50	5.12	8.00	8.50	1-14 UNS	10.00	6.00	5.12	8.00
<b>kg/mm</b>															
2,268.0-9,071.9	14.2	26.9	134.9	19.1	12.7	279.4	203.2	76.2	152.4	174.5	5/8-18 UNF	190.5	101.6	76.2	152.4
13,607.8-27,215.5	17.3	30.2	214.1	25.4	19.1	381.0	292.1	130.0	203.2	215.9	1-14 UNS	254.0	152.4	130.1	203.2

NOTES: Mounting bolts (T) may project on lower side of base plate. Foundation plate not included

## Order Information

LOAD RATING (PER MODULE)	PART #	PRICE
<b>3-Module Kit</b>		
5,000 lb (2,268.0 kg)	46695	\$5,595.00
10,000 lb (4,535.9 kg)	46696	5,595.00
20,000 lb (9,071.9 kg)	46697	5,595.00
30,000 lb (13,607.8 kg)	46698	10,595.00
40,000 lb (18,143.7 kg)	46699	10,595.00
50,000 lb (22,679.6 kg)	46700	10,595.00
60,000 lb (27,215.5 kg)	46701	10,595.00
<b>4-Module Kit</b>		
5,000 lb (2,268.0 kg)	46702	7,495.00
10,000 lb (4,535.9 kg)	46703	7,495.00
20,000 lb (9,071.9 kg)	46704	7,495.00
30,000 lb (13,607.8 kg)	46705	13,995.00
40,000 lb (18,143.7 kg)	46706	13,995.00
50,000 lb (22,679.6 kg)	46707	13,995.00
60,000 lb (27,215.5 kg)	46708	13,995.00
<b>Dummy Load Cells (Mild Steel)</b>		
5,000 lb-20,000 lb (2,268.0 kg-9,071.9 kg)	33749	75.00
30,000 lb-60,000 lb (13,607.8 kg-27,215.5 kg)	74016	95.00
<b>Grounding Kit</b>		
5,000 lb-60,000 lb	126419	15.45

Includes ground strap and mounting hardware

## Shims

PART #	PRICE
<b>5,000 lb-20,000 lb, Stainless Steel</b>	
0.0625 in	150886
0.125 in	150888
0.250 in	150889
<b>30,000 lb-60,000 lb, Stainless Steel</b>	
0.0625 in	150890
0.125 in	150891
0.250 in	150892
<b>100,000 lb-150,000 lb, Stainless Steel</b>	
0.0625 in	150893
0.125 in	150894
0.250 in	150896
<b>5,000 lb-20,000 lb, Mild Steel</b>	
0.0625 in	150874
0.125 in	150876
0.250 in	150877
<b>30,000 lb-60,000 lb, Mild Steel</b>	
0.0625 in	150878
0.125 in	150880
0.250 in	150881
<b>100,000 lb-150,000 lb, Mild Steel</b>	
0.0625 in	150882
0.125 in	150884
0.250 in	150885