

RL2100 HE

Heavy-capacity Weigh Modules



Picture is a representation of actual product

Incorporating an articulating load plate, hardened load pin and double-ended beam load cell into one simple design, the RL2100HE tolerates eccentric loads and side loads of up to 100 percent of capacity. The RL2100 HE comes standard with NTEP Certified, 1:5000 division Class III L load cells, yielding up to 0.02 percent total error. An integral conduit adapter offers added washdown protection. These standard features give the RL2100 HE accuracy and dependability in one heavyweight package. The simple load introduction and load cell design provides consistent accuracy in washdown applications, making the RL2100 HE ideal for high-capacity hostile environments.

Standard Features

- All stainless steel construction
- Welded seal, stainless steel load cells, IP67, guaranteed waterproof
- NTEP Certified load cells, 5000d, Class III L/10,000d, Class III L multiple cell
- Bolt-in-place design; module bolts directly to tank leg without requiring additional load buttons or mounting plates
- Self-checking design with lift-off/tip-over protection
- Two-year limited warranty

Applications

- Heavy-capacity tanks, blenders, reactors and bulk inventory management
- Petroleum refining process control
- Chemical blending/batching

Complete Kit Includes

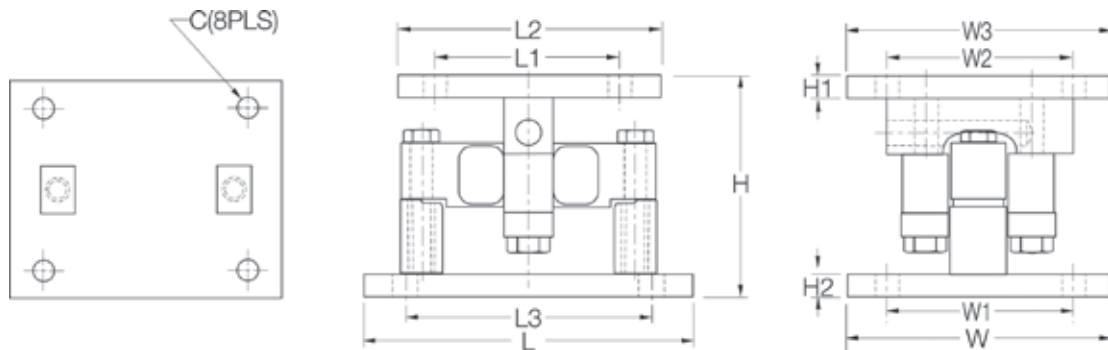
- 1 JB4SS NEMA Type 4X stainless steel signal-trim junction box
- 3 or 4 RL2100HE stainless steel compression mounts
- 3 or 4 RL75060S stainless steel, welded seal double-ended beam load cells
- 25 ft of our hostile environment EL147HE SURVIVOR® load cell cable

Load Cell Certifications



RL2100 HE

Heavy-capacity Weigh Modules



Dimensions

RATED CAPACITY	C	H	H1	H2	L	L1	L2	L3	W	W1	W2	W3
lb/inches												
20,000-25,000	0.78	6.85	0.75	0.75	10.00	6.00	8.00	7.50	8.00	6.00	6.00	8.00
35,000-100,000	1.13	9.42	1.00	1.00	14.00	6.50	9.00	11.50	10.00	7.50	6.50	9.00
kg/mm												
9,071.9-11,339.8	19.8	174.0	19.1	19.1	254.0	152.4	203.2	190.5	203.2	152.4	152.4	203.2
15,875.7-45,359.2	28.7	239.3	25.4	25.4	355.6	165.1	228.6	292.1	254.0	190.5	165.1	228.6

Order Information

LOAD RATING (PER MODULE)	PART #	PRICE
Single Module (Includes Load Cell)		
20,000 lb (9,071.8 kg)	32951	\$1,725.00
25,000 lb (11,339.8 kg)	65541	1,725.00
35,000 lb (15,875.7 kg)	32952	2,575.00
50,000 lb (22,679.6 kg)	32953	2,575.00
60,000 lb (27,215.5 kg)	32954	2,575.00
75,000 lb (34,019.4 kg)	32955	2,575.00
100,000 lb (45,359.2 kg)	32956	4,400.00

Order Information

LOAD RATING (PER MODULE)	PART #	PRICE
3-Module Kit		
20,000 lb (9,071.8 kg)	32970	\$5,200.00
25,000 lb (11,339.8 kg)	65984	5,200.00
35,000 lb (15,875.7 kg)	32969	7,770.00
50,000 lb (22,679.6 kg)	32968	7,770.00
60,000 lb (27,215.5 kg)	32967	7,770.00
75,000 lb (34,019.4 kg)	32966	7,770.00
100,000 lb (45,359.2 kg)	32965	12,675.00
4-Module Kit		
20,000 lb (9,071.8 kg)	32964	7,850.00
25,000 lb (11,339.8 kg)	65983	7,850.00
35,000 lb (15,875.7 kg)	32963	11,295.00
50,000 lb (22,679.6 kg)	32962	11,295.00
60,000 lb (27,215.5 kg)	32961	11,295.00
75,000 lb (34,019.4 kg)	32960	11,295.00
100,000 lb (45,359.2 kg)	32959	17,695.00