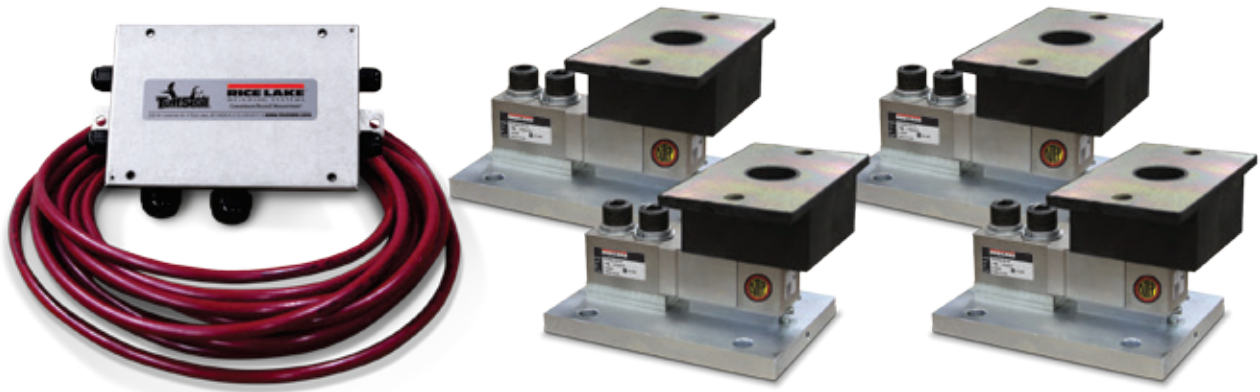


RL50210 TA

1,000lb-2,500lb Capacity Mini Tank Weighing Module

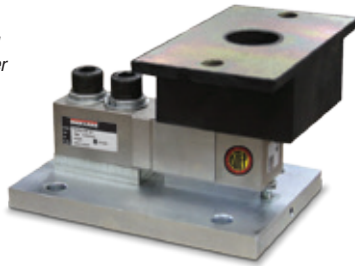


Available in configurations with three or four mounting assemblies.

Picture is a representation of actual product

The RL50210 TA weigh module kit provides a cost-effective alternative for your customers' medium-range weighing needs. A variety of features makes this kit easy to install and an exceptional choice for various indoor weighing applications where checking requirements are low. Environmentally protected load cells, neoprene isolation/compression mounts and other Rice Lake Weighing Systems components are the keys to this module's performance.

Module with RL35023 single-ended shear beam load cell; capacities (per module): NTEP Certified 1,000 lb (453.6 kg) load cell shown.



Standard Features

- NTEP Certified load cells (alloy steel only), 1:5,000 d, Class III multiple cell
- Zinc plated, mild steel assemblies
- Medium weighing ranges from 1,000 lb-2,500 lb (453.6 kg-1,134.0 kg) per module
- Environmentally protected load cells
- Neoprene isolation/compression mounts allow for minor misalignment, thermal expansion and shock absorption
- Overload stop provides durability
- RL50210 stainless steel mounts use RL35023S stainless steel load cells, capacities: 1,000 lb-2,500 lb (453.6 kg-1,134.0 kg) NTEP Certified cells
- 65059 stainless steel mounts use VPG Sensortronics 65023S NTEP Certified stainless steel load cells

Applications

- Small tanks and hoppers
- Conveyor/In-motion weighing
- Small platform scales where minor shock loading may be a problem

Complete Kit Includes

- 1 JB4SS NEMA Type 4X stainless steel signal trim junction box
- 3 or 4 RL35023 shear beam load cells
- 3 or 4 neoprene isolation/compression mounts
- 25 ft of our hostile environment EL147HE SURVIVOR® load cell cable

Optional Features

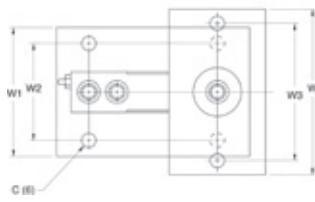
- Welded stainless steel cells available in stainless steel mounts

Load Cell Certifications

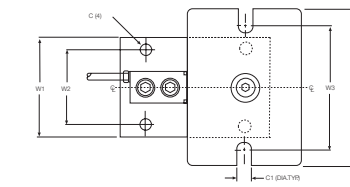
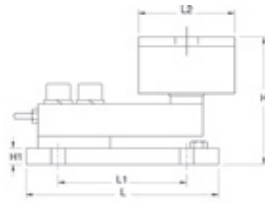


RL50210 TA

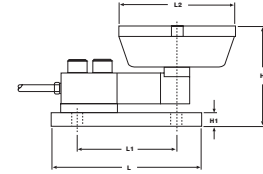
1,000lb-2,500lb Capacity Mini Tank Weighing Module



1,000 lb (453.6 kg)



2,000 lb-2,500 lb (907.2 kg-1,134.0 kg)



Dimensions

RATED CAPACITY	C	C1	H	H1	L	L1	L2	W	W1	W2	W3
lb/inches											
1,000	0.44	—	4.00	0.50	6.00	4.00	3.00	5.13	4.00	3.00	4.13
2,000-2,500	0.44	0.56	4.00	0.50	6.00	4.00	4.62	6.25	4.00	3.00	5.00
kg/mm											
453.6	11.2	—	101.6	12.7	152.4	101.6	76.2	130.3	101.6	76.2	104.9
907.2-1,134.0	11.2	14.2	101.6	12.7	152.4	101.6	117.3	158.8	101.6	76.2	127.0

Order Information

LOAD RATING (PER MODULE)*	PART #	PRICE
Mild Steel Single Module (Includes Load Cell)		
1,000 lb (453.6 kg)	17849	\$525.00
2,000 lb (907.2 kg)	17948	525.00
2,500 lb (1,134.0 kg)	17949	525.00
Mild Steel 3-Module Kit		
1,000 lb (453.6 kg)	18056	1,775.00
2,000 lb (907.2 kg)	30398	1,775.00
2,500 lb (1,134.0 kg)	30396	1,775.00
Mild Steel 4-Module Kit		
1,000 lb (453.6 kg)	18062	2,275.00
2,000 lb (907.2 kg)	30397	2,275.00
2,500 lb (1,134.0 kg)	30395	2,275.00
Stainless Steel Single Module (Includes Load Cell)		
1,000 lb (453.6 kg)	17955	610.00
2,000 lb (907.2 kg)	17956	610.00
2,500 lb (1,134.0 kg)	17957	610.00
Stainless Steel 3-Module Kit		
1,000 lb (453.6 kg)	30404	2,020.00
2,000 lb (907.2 kg)	30402	2,020.00
2,500 lb (1,134.0 kg)	30400	2,020.00
Stainless Steel 4-Module Kit		
1,000 lb (453.6 kg)	30403	2,650.00
2,000 lb (907.2 kg)	30401	2,650.00
2,500 lb (1,134.0 kg)	30399	2,650.00

* Load rating is per module

VPG Sensortronics® 65059

Order Information

LOAD RATING (PER MODULE)*	PART #	PRICE
Mild Steel Single Module (Includes Load Cell)		
1000 lb (453.6 kg)	17830	\$525.00
2000 lb (907.2 kg)	17946	525.00
2500 lb (1,134.0 kg)	17947	525.00
Mild Steel 3-Module Kit		
1000 lb (453.6 kg)	18068	1,775.00
2000 lb (907.2 kg)	30413	1,775.00
2500 lb (1,134.0 kg)	30412	1,775.00
Mild Steel 4-Module Kit		
1000 lb (453.6 kg)	18074	2,275.00
2000 lb (907.2 kg)	30414	2,275.00
2500 lb (1,134.0 kg)	30411	2,275.00
Stainless Steel Single Module (Includes Load Cell)		
1000 lb (453.6 kg)	17951	610.00
2000 lb (907.2 kg)	17952	610.00
2500 lb (1,134.0 kg)	17953	610.00
Stainless Steel 3-Module Kit		
1000 lb (453.6 kg)	30410	2,020.00
2000 lb (907.2 kg)	30408	2,020.00
2500 lb (1,134.0 kg)	30406	2,020.00
Stainless Steel 4-Module Kit		
1000 lb (453.6 kg)	30409	2,650.00
2000 lb (907.2 kg)	30407	2,650.00
2500 lb (1,134.0 kg)	30405	2,650.00

* Load rating is per module