

# 136-01 (Sizes 1/2"-4")

(Full Internal Port)

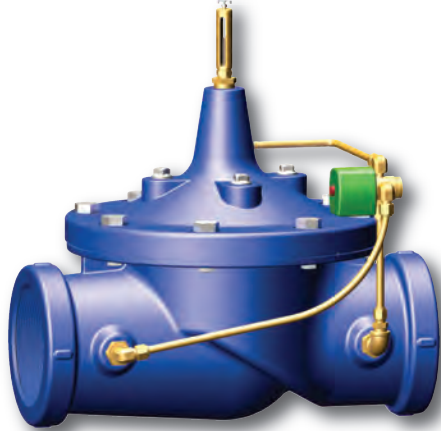
MODEL \_\_\_\_\_

# 636-01 (Sizes 3"-6")

(Reduced Internal Port)



# Solenoid Control Valve



- Fast Acting Solenoid Control
- Reliable, Drip-Tight Shut-Off
- Simple Design, Proven Reliable
- Optional Check Feature
- Easy Installation and Maintenance

The Cla-Val Model 136-01/636-01 Solenoid Control Valve is an on-off control valve that either opens or closes upon receiving an electrical signal to the solenoid pilot control. This valve consists of a Hytrol main valve and a three-way solenoid valve that alternately applies pressure to or relieves pressure from the diaphragm chamber of the main valve. It is furnished either normally open (de-energized solenoid to open) or normally closed (energized solenoid to open).

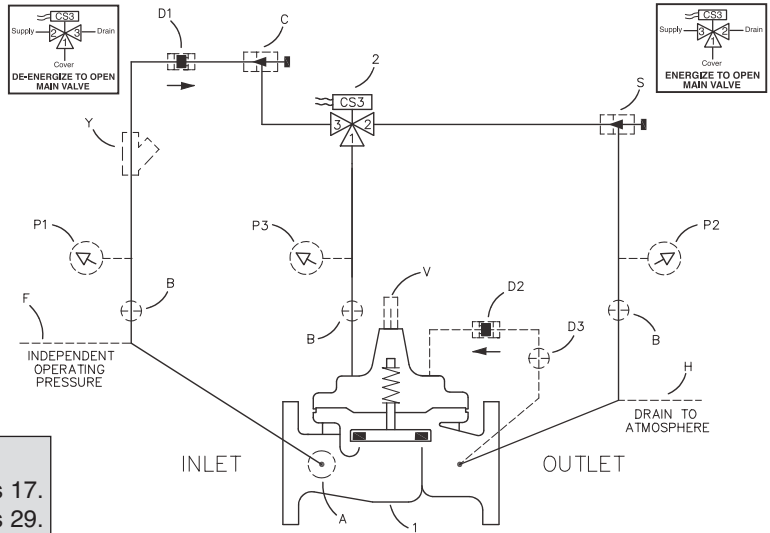
If the check feature option is added and a pressure reversal occurs, the downstream pressure is admitted into the main valve cover chamber and the valve closes to prevent return flow.

## Schematic Diagram

Item	Description
1	100-01 Hytrol Main Valve
2	CS3 Solenoid Control

## Optional Features

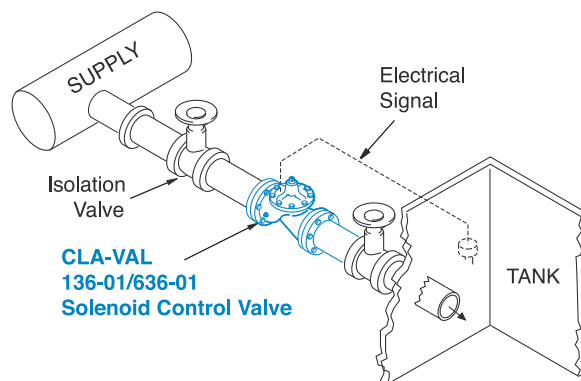
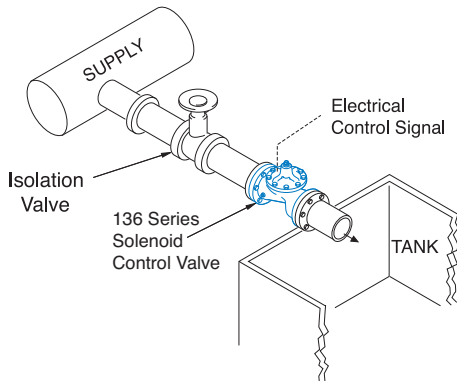
Item	Description
A	X46A Flow Clean Strainer
B	CK2 Isolation Valve
C	CNA Closing Speed Control
D	Check Valves with Isolation Valve
P	X141 Pressure Gauge
S	CNA Needle Valve (Opening)
V	X101 Valve Position Indicator
Y	X43 "Y" Strainer



## Product Dimensions Data:

For the 136-01 Main Valve (100-01) dimensions, see pages 17.  
For the 636-01 Main Valve (100-20) dimensions, see pages 29.

## Typical Applications



Industrial uses for the solenoid control valve are many and include accurate control of process water for batching, mixing, washing, blending or other on-off type uses.

Liquid level control can be provided by using a float switch or electrode probe which sends an electrical signal to open or close the valve as needed.