

RL1855 HE

Medium-capacity Weigh Modules



Picture is a representation of actual product

The internal height adjustment feature of the RL1855 HE reduces the need for shims or external hardware, simplifying installation. The standard conduit adapter allows for connection to conduit for cable protection. With standard NTEP Certified, 1:5000 division Class III load cells, the RL1855 HE provides an accurate weighing system when properly installed. Highly versatile, the RL1855 HE offers worry-free operation in a wide variety of rugged applications.

Standard Features

- All stainless steel construction
- Welded seal, stainless steel load cells, IP67, guaranteed waterproof
- NTEP Certified load cells, 5000 d, Class III multiple cell
- Bolt-in-place design; module bolts directly to tank leg without requiring additional load buttons or mounting plates
- Self-checking design with lift-off/tip-over protection
- Two-year limited warranty

Applications

- Medium-capacity hoppers, bins and tanks
- Chemical batching/blending
- Fertilizer blending

Complete Kit Includes

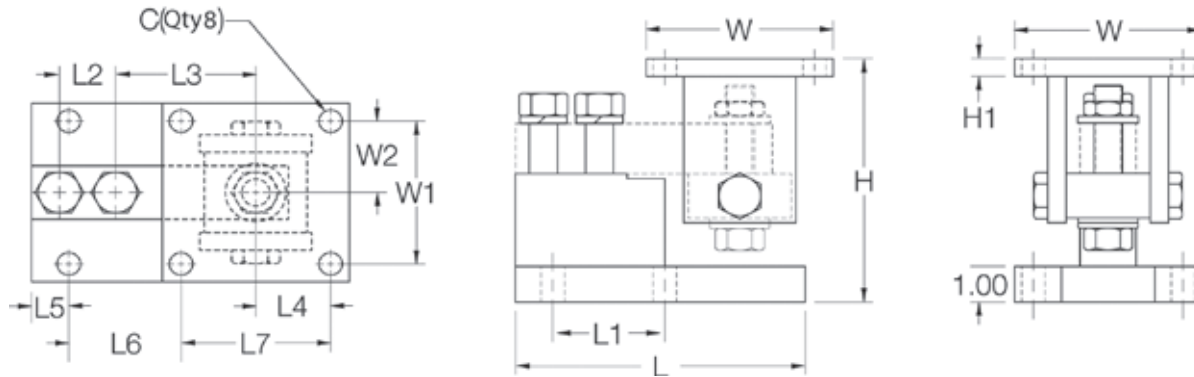
- 1 JB4SS NEMA Type 4X stainless steel signal-trim junction box
- 3 or 4 1855HE stainless steel compression mounts
- 3 or 4 RL35082 stainless steel, welded seal single-ended beam load cells
- 25 ft of our hostile environment EL147HE SURVIVOR® load cell cable

Load Cell Certifications



RL1855 HE

Medium-capacity Weigh Modules



Dimensions

RATED CAPACITY	C	H MIN/MAX	H1	L	L1	L2	L3	L4	L5	L6	L7	W	W1	W2
lb/inches														
1,000-4,000	0.62	5.25/5.56	0.50	6.00	2.00	1.00	3.00	2.00	0.68	1.94	4.00	5.00	4.00	2.00
5,000-10,000	0.62	6.12/6.62	0.50	7.75	3.00	1.50	3.75	2.00	1.03	2.97	4.00	5.00	4.00	2.00
kg/mm														
453.6-1,814.4	15.8	133.4/141.2	12.7	152.4	50.8	25.4	76.2	50.8	17.3	49.3	101.6	127.0	101.6	50.8
2,268.0-4,535.9	15.8	155.4/168.1	12.7	196.9	76.2	38.1	95.3	50.8	26.2	75.4	101.6	127.0	101.6	50.8

Order Information

LOAD RATING (PER MODULE)	PART #	PRICE
Single Modules (Includes Load Cell)		
1,000 lb (453.6 kg)	32975	\$895.00
2,500 lb (1,134.0 kg)	32976	895.00
4,000 lb (1,814.4 kg)	32977	895.00
5,000 lb (2,268.0 kg)	32978	995.00
10,000 lb (4,535.9 kg)	32979	995.00

Order Information

LOAD RATING (PER MODULE)	PART #	PRICE
3-Module Kit		
1,000 lb (453.6 kg)	30390	\$2,885.00
2,500 lb (1,134.0 kg)	30388	2,885.00
4,000 lb (1,814.4 kg)	30386	2,885.00
5,000 lb (2,268.0 kg)	30384	3,185.00
10,000 lb (4,535.9 kg)	30382	3,185.00
4-Module Kit		
1,000 lb (453.6 kg)	30389	3,780.00
2,500 lb (1,134.0 kg)	30387	3,780.00
4,000 lb (1,814.4 kg)	30385	3,780.00
5,000 lb (2,268.0 kg)	30383	4,180.00
10,000 lb (4,535.9 kg)	30381	4,180.00