

CGC

40/50/55/60/70

IC-CUSHION LPG
8,000 / 10,000 / 12,000 / 13,500 / 15,500 lbs.
(4000 / 5000 / 5500 / 6000 / 7000 kg)



CLARK[®]
THE FORKLIFT

7 metric tons

With a **capacity** of up to **15,500 lbs.** the CLARK CGC 40/50/55/60/70 gets the job done.

- Nested upright rails provide positive rail interlock and a narrow “column” to **maximize the vision window.** The overhead guard safety bars run parallel to the operator’s line of sight resulting in a **clear, unobstructed view.**

Maximum Visibility + Minimum Fatigue =
Ultimate Safety & Product Integrity





STEERING AXLE

■ Rugged Design

- Linkage pivot pins have a “double shear” design to withstand impact without loosening or breaking.

■ Simple Axle Design

- Double-ended cylinder provides steering force.



RUGGED UPRIGHT AND CARRIAGE

■ Maximum Visibility

- Nested I-Channel allows space for cylinders, hoses and chains.

■ Hydraulic Cushioning Valves

- Silent Staging Reduces Shock & Vibration.

■ Shimmable, Sealed & Canted Load Rollers

- Carriage has 6 load rollers.
- Maximize Load Distribution & Reduce Free Play.



TRANSAXLE

■ Integral Axle And Transmission

- No exposed seals or driveshafts to wear or collect debris.

■ Modulated Shift Protection

- Smooth Engagement, Cushioned Shifting.

■ Common Sump

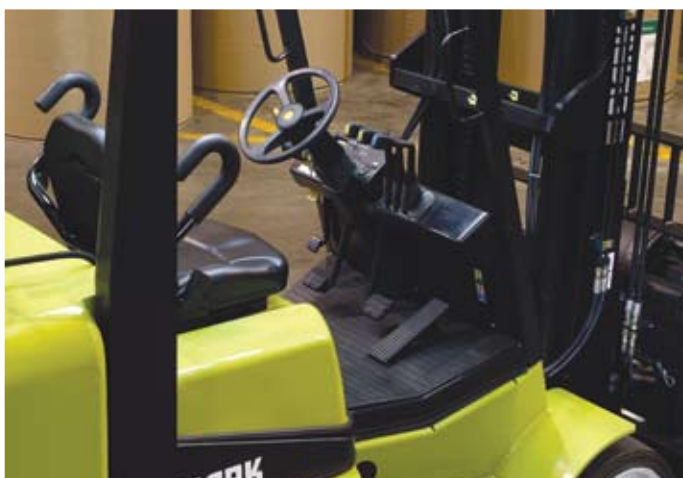
- Allows both axle and transmission lube to be cooled with the transmission cooling system.

■ Heavy Duty

- Torque convertor, clutches and axle gearing extend life and minimizes service requirements.

■ Inching Valve

- with Left Brake Pedal operation allows for precisely controlled travel speeds during high speed lifting.



OPERATOR COMPARTMENT

■ Fully Adjustable, Full Suspension Seat

- 2.4” Vertical Travel • 20° Backrest Adjustment Range
- 6” fore / aft adjustment • Contoured for support
- Non-Cinching, Retractable Seat Belt

■ Thick Molded Floor Mat

- Reduces vibration and noise level.
- Improves operator comfort.

■ Tilt Steering Column

- Adjusts to Suit Operator & Easier Entry/Exit.

■ Fingertip Operation

- Electronic directional controls minimize fatigue.

■ Largest Operator Compartment in the Industry

GENERAL DATA & STANDARD DIMENSIONS

Upright Table

Maximum Fork Height in mm	Overall Height Lowered in mm	Free Lift in mm	Standard Tilt Spec B°/F°
CGC40 Standard			
110 2794	83.2 2114	6.5 165	8/9
• 122 3073	89.1 2264	6.5 165	8/9
145 3683	101 2565	6.5 165	5/6
169 4293	112.7 2864	6.5 165	5/6
CGC40 Triple Stage			
170 4328	83 2106	57 1453	5/6
• 188 4778	89 2256	63 1603	5/6
198 5039	98 2481	72 1828	5/3
211 5378	101 2556	75 1903	5/3
229 5829	107 2706	80 2053	5/3
253 6428	118.5 3006	92 2353	3/0
CGC50 Standard			
104 2645	84 2131	6.5 174	8/9
• 116 2945	90 2281	6.5 174	8/9
140 3530	102 2581	6.5 174	8/9
163 4140	113.4 2881	6.5 174	5/6
CGC50 Triple Stage			
162 4115	83.5 2117	49 1258	5/6
• 178 4529	89.5 2267	55 1408	5/6
190 4825	95.5 2417	61 1558	5/3
198 5029	101 2567	67 1708	5/3
220 5578	107 2717	78 1858	5/3
243 6178	119 3017	85 2158	3/0
CGC55 Standard			
100 2540	84 2132	6.9 175	8/9
• 112 2845	90 2281	6.9 175	8/9
135 3430	102 2582	6.9 175	8/9
159 4040	114 2882	6.9 175	5/6
CGC55 Triple Stage			
152 3874	83.5 2117	51 1298	5/6
• 169 4288	89.5 2267	57 1448	5/6
180 4588	95.5 2417	63 1598	5/6
192 4876	99.0 2515	64 1625	5/3
210 5338	107 2717	74 1898	5/3
234 5938	119 3017	86 2198	3/0

Upright Table cont.

Maximum Fork Height in mm	Overall Height Lowered in mm	Free Lift in mm	Standard Tilt Spec B°/F°
CGC60/70 Standard			
103 2616	92 2337	8.5 216	8/8
• 117 2972	99 2515	8.5 216	8/8
135 3429	108 2743	8.5 216	8/8
159 4039	120 3048	8.5 216	8/8
CGC60/70 Triple Stage			
150 3810	92 2337	55 1397	5/6
• 174 4420	100 2540	63 1600	5/6
189 4801	105 2667	68 1727	5/6
198 5029	108 2743	72 1829	5/3
222 5639	119 3023	83 2108	5/3
275 6985	142 3607	103 2616	3/0

* Indicates Common Preferred Spec

Notes

Production engines and driveline components may vary in output and/or efficiency by ±5%. The performance shown represents nominal values which may be obtained under typical operating conditions of a machine.

ANSI/ITSDF and Insurance Classification

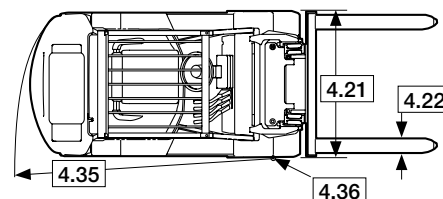
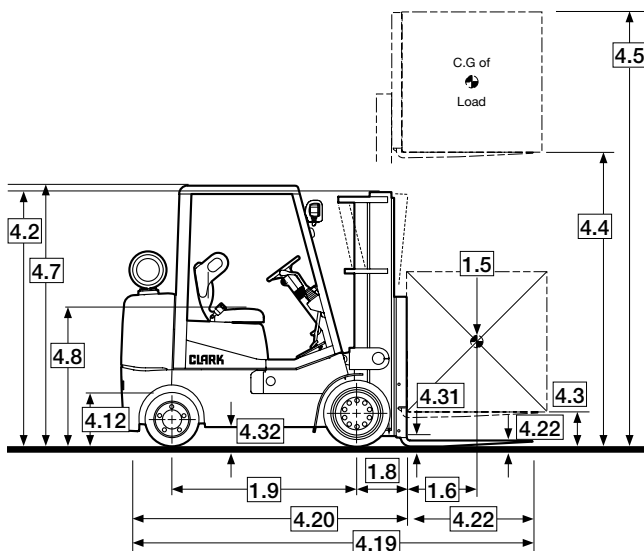
Standard truck meets all applicable mandatory requirements of Part III-ANSI/ITSDF B56.1 Safety Standard for Powered Industrial Trucks and Underwriters Laboratories requirements as to fire hazard only for D and LP classifications. For further information contact a Clark representative.

Users should be aware of, and adhere to, applicable codes and regulations regarding operator training, use, operation and maintenance of powered industrial trucks, including:

- ANSI/ITSDF B56.1
- NFPA 505, fire safety standard for powered industrial trucks - type designations, areas of use, maintenance and operation.
- Occupational Safety and Health Administration (OSHA) regulations that may apply.

Contact your authorized CLARK forklift truck dealer for further information including operator training programs and auxiliary visual and audible warning systems, fire extinguishers, etc., as available for specific user applications and requirements.

Specifications, equipment, technical data, photos and illustrations are based on information at time of printing and are subject to change without notice. Some products may be shown with optional equipment.



For corresponding data see Specification Chart

STANDARD SPECIFICATIONS

Specifications	1.1	Manufacturer		Clark	Clark
	1.2	Manufacturer's Designation		CGC 40	CGC 50
	1.3	Drive unit Diesel, LP. Gas		LPG	LPG
	1.4	Operator type stand on / driver seated		Rider counterbalanced	Rider counterbalanced
	1.5	Load capacity / rated load	lbs(kg)	8,000 (4000)	10,000 (5000)
	1.6	Load center distance	in(mm)	24 (600)	24 (600)
	1.8	Load center distance, center of drive axle to fork face	in(mm)	STD 17.3 (439) TSU 18.1 (460)	STD 17.8 (452) TSU 18.6 (472)
	1.9	Wheelbase	in(mm)	61.8 (1570)	70.5 (1790)
Weight	2.1	Service weight	lbs(kg)	12,921 (5861)	14,852 (6737)
	2.2	Axle loading, loaded front / rear	lbs(kg)	18,429 / 2,492 (8359 / 1130)	22,431 / 2,421 (10175 / 1098)
	2.3	Axle loading, unloaded front / rear	lbs(kg)	5,084 / 7,837 (2306 / 3555)	6,504 / 8,348 (2950 / 3787)
Tires	3.1	Tire type, P = pneumatic, SE = solid pneu, C = cushion		Cushion	Cushion
	3.2	Tire size, front	in	22 x 9 x 16	22 x 12 x 16
	3.3	Tire size, rear	in	18 x 6 x 12.12	22 x 7 x 16
	3.5	Wheels, number front / rear (x = drive wheels)		2 x / 2	2 x / 2
	3.6	Tread, front	in(mm)	41.8 (1062)	43.8 (1113)
	3.7	Tread, rear	in(mm)	44.0 (1118)	43.0 (1093)
Dimensions	4.1	Tilt of upright / fork carriage, back / forward, a / b	degrees	STD 8 / 9 TSU 5 / 6	STD 8 / 9 TSU 5 / 6
	4.2	Height, upright lowered	in(mm)	STD 89.1 (2264) TSU 89.0 (2260)	STD 90.0 (2286) TSU 89.5 (2273)
	4.3	Freelift	in(mm)	STD 6.5 (165) TSU 63.0 (1626)	STD 6.5 (165) TSU 55.0 (1408)
	4.4	Lift height	in(mm)	STD 122 (3099) TSU 188 (4775)	STD 116 (2946) TSU 178 (4521)
	4.5	Height, upright extended	in(mm)	STD 170 (4318) TSU 236 (5994)	STD 164 (4165) TSU 226 (5740)
	4.7	Height overhead guard	in(mm)	87.2 (2215)	87.2 (2215)
	4.8	Seat height	in(mm)	45.25 (1150)	45.25 (1150)
	4.12	Coupling height	in(mm)	13.25 (337)	13.25 (337)
	4.19	Overall length	in(mm)	138 (3505)	153.2 (3891)
	4.20	Length to face of forks	in(mm)	STD 96.0 (2438) TSU 96.8 (2459)	STD 105.2 (2672) TSU 106.0 (2692)
	4.21	Width	in(mm)	50.8 (1290)	54.8 (1392)
	4.22	Fork dimensions	in(mm)	2 x 5 x 42 (50 x 127 x 1067)/III	2 x 6 x 48 (50 x 152 x 1220)/III
	4.23	Fork carriage		Hook Type	Hook Type
	4.24	Fork carriage width	in(mm)	41 (1041)	49 (1245)
	4.31	Ground clearance minimum, loaded	in(mm)	3.8 (96)	3.8 (96)
	4.32	Ground clearance center of wheelbase	in(mm)	6.1 (155)	6.1 (155)
	4.34	Right Angle Stack (add load length and clearance)	in(mm)	STD 106.7 (2710) TSU 107.5 (2731)	STD 116.0 (2946) TSU 116.8 (2967)
	4.35	Outside turning radius	in(mm)	89.4 (2270)	98.2 (2494)
	4.36	Inside turning radius	in(mm)	13.2	12.5
Performance	5.1	Travel speed loaded / unloaded	mph (kph)	12.2 / 12.5 (19.6 / 20.1)	12.1 / 12.4 (19.5 / 20.0)
	5.2	Lift speed loaded / unloaded	fpm(ms)	STD 101/112 (.51/.57) TSU 97/108 (.49/.55)	STD 89/111 (.45/.56) TSU 90/105 (.45/.53)
	5.3	Lowering speed loaded / unloaded	fpm(ms)	STD 78.1/72.8 (.40/.37) TSU 83/80 (.42/.41)	STD 78/92 (.39/.47) TSU 80/80 (.41/.41)
	5.6	Max. drawbar pull loaded / unloaded	lbs(N)	5,250 / 2,380 (23350 / 10580)	5,000 / 3,125 (22240 / 13900)
	5.8	Max. gradeability loaded / unloaded	%	27.1 (15.4)	20.1 (18.0)
	5.10	Service brake		Power assist disc	Power assist disc
Drive Line	7.1	Manufacturer / Type		GM / Vortec 4300LT	GM / Vortec 4300LT
	7.2	Rated output per SAE J1349	HP/kW @ rpm	93 / 69 @ 2400	93 / 69 @ 2400
	7.3	Rated speed	rpm	2,650	2,650
	7.4	No. of cylinders / displacement	cu. in.-Liters	6 / 262 - 4.3	6 / 262 - 4.3
8.2	Operating pressure for attachments	psi/bar	Adjustable	Adjustable	
8.4	Sound level, driver's ear	dB(A)	81	81	

GENESIS CGC40/50/55/60/70

Clark	Clark	Clark
CGC 55	CGC 60	CGC 70
LPG	LPG	LPG
Rider counterbalanced	Rider counterbalanced	Rider counterbalanced
12,000 (5500)	13,500 (6000)	15,500 (7000)
24 (600)	24 (600)	24 (600)
STD 18.4 (467) TSU 19.2 (488)	STD 18.9 (480) TSU 19.7 (500)	STD 18.9 (480) TSU 19.7 (500)
70.5 (1790)	75.0 (1905)	75.0 (1905)
16,881 (7657)	18,809 (8532)	20,859 (9462)
25,942 / 2,939 (11767 / 1333)	28,922 / 3,387 (13119 / 1536)	32,415 3,944 (14703 / 1789)
6,720 / 10,161 (3048 / 4609)	7,804 / 11,005 (3540 / 4992)	8,173 / 12,686 (3707 / 5754)
Cushion	Cushion	Cushion
22 x 12 x 16	22 x 14 x 16	22 x 14 x 16
22 x 7 x 16	22 x 8 x 16	22 x 8 x 16
2 x / 2	2 x / 2	2 x / 2
43.8 (1113)	44.8 (1138)	44.8 (1138)
43.0 (1093)	42.0 (1067)	42.0 (1067)
STD 8 / 9 TSU 5 / 6	STD 8 / 8 TSU 5 / 6	STD 8 / 8 TSU 5 / 6
STD 90.0 (2286) TSU 89.5 (2273)	STD 99 (2515) TSU 100 (2540)	STD 99 (2515) TSU 100 (2540)
STD 6.9 (175) TSU 57.0 (1448)	STD 8.5 (216) TSU 63.0 (1600)	STD 8.5 (216) TSU 63.0 (1600)
STD 112 (2845) TSU 169 (4293)	STD 117 (2972) TSU 174 (4420)	STD 117 (2972) TSU 174 (4420)
STD 160 (4064) TSU 217 (5512)	STD 165 (4191) TSU 222 (5639)	STD 165 (4191) TSU 222 (5639)
87.2 (2215)	91.0 (2311)	91.0 (2311)
45.25 (1150)	45.25 (1150)	45.25 (1150)
13.25 (337)	13.25 (337)	13.25 (337)
155.9 (3960)	160.3 (4072)	163.1 (4143)
STD 107.9 (2741) TSU 108.7 (2761)	STD 112.3 (2853) 113.1 (2873)	STD 115.1 (2923) TSU 115.9 (2943)
54.8 (1392)	58.8 (1494)	58.8 (494)
2.25 x 6 x 48 (57 x 152 x 1220)/IV	2.5 x 6 x 48 (65 x 150 x 1220)	2.5 x 6 x 48 (65 x 150 x 1220)
Hook Type	Hook Type	Hook Type
49 (1245)	55 (1397)	55 (1397)
3.8 (96)	3.8 (96)	3.8 (96)
6.1 (155)	6.1 (155)	6.1 (155)
STD 118.3 (3005) TSU 119.1 (3025)	STD 124.0 (3149) TSU 124.8 (3170)	STD 126.3 (3208) TSU 127.1 (3228)
99.9 (2537)	105.1 (2669)	107.4 (2728)
12.5	11.7	11.7
11.7 / 12.2 (18.8 / 19.6)	10.3 / 10.4 (16.5 / 16.5)	10.2 / 10.4 (16.3 / 16.6)
STD 76.1/111 (.39/.56) TSU 82/103 (.42/.52)	STD 61/83 (.31/.42) TSU 62/81 (.31/.41)	STD 60/83 (.30/.42) TSU 60/81 (.30/.41)
STD 77/89 (.39/.45) TSU 75/78 (.38/.40)	STD 80/69 (.40/.35) TSU 75/58 (.38/.30)	STD 80/69 (.40/.35) TSU 75/58 (.38/.30)
4,750 / 3,205 (21130 / 14255)	9,470 / 4,470 (42120 / 19885)	9,420 / 4,450 (41900 / 19795)
18.2 / 16.1	32.3 / 19.9	29.9 / 17.7
Power assist disc	Power assist disc	Power assist disc
GM / Vortec 4300LT	GM / Vortec 4300LT	GM / Vortec 4300LT
93 / 69 @ 2400	93 / 69 @ 2400	93 / 69 @ 2400
2,650	2,650	2,650
6 / 262 - 4.3	6 / 262 - 4.3	6 / 262 - 4.3
Adjustable	Adjustable	Adjustable
81	81	81