

# RL1600 Series

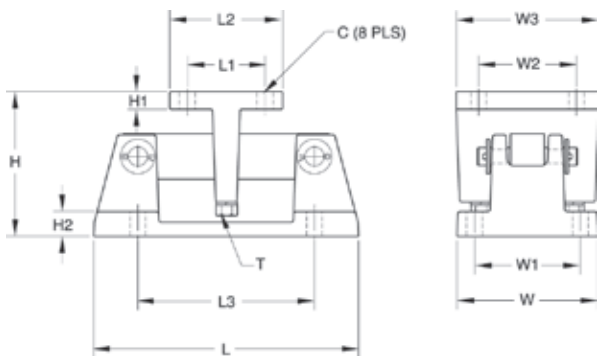
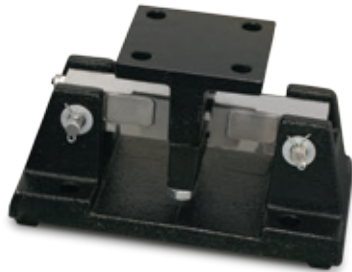
Cast Iron Weigh Modules



Available in configurations with three or four mounting assemblies.  
Picture is a representation of actual product

The RL1600 Series mounting module kit utilizes several Rice Lake Weighing Systems components to provide an unmatched level of performance in tank and hopper weighing applications. The RL1600 Series kit is ideally suited for indoor and outdoor process control operations in the medium- to high-capacity ranges. Each module incorporates self-checking capabilities for thermal expansion and contraction.

Cast iron module with  
RL75016 double-ended beam  
load cell.



## Dimensions

RATED CAPACITY	C	H	H1	H2	L	L1	L2	L3	T	W	W1	W2	W3
<b>lb/inches</b>													
1,000-5,000	0.56	5.00	0.50	0.50	9.31	2.75	4.00	6.25	1/2-13UNC	5.00	3.75	2.75	4.00
10,000-25,000	0.78	7.89	0.75	0.75	12.00	6.00	8.00	7.50	3/4-10UNC	8.00	6.00	6.00	8.00
<b>kg/mm</b>													
453.6-2,268.0	14.2	127.0	12.7	12.7	236.5	69.9	101.6	158.8	1/2-13UNC	127.0	95.3	69.9	101.6
4,535.9-11,339.8	19.8	200.4	19.1	19.1	304.8	152.4	203.2	190.5	3/4-10UNC	203.2	152.4	152.4	203.2

## Complete Kit Includes

- 1 JB4SS NEMA Type 4X stainless steel signal trim junction box
- 3 or 4 RL1600 cast iron compression mounts
- 3 or 4 RL75016 double-ended shear beam load cells
- 25 ft of our hostile environment EL147HE SURVIVOR® load cell cable

## Applications

- Medium- to heavy-capacity tanks, bins and hoppers
- Bulk material management

## Standard Features

- Capacities (per module): 1,000 lb-25,000 lb (453.6 kg-11,339.8 kg)
- Cast iron construction
- Self-checking easy-to-use design allows module to be bolted directly to tank leg without requiring additional mounting plates or load buttons
- Environmentally protected load cells
- Double-ended beam design, center loaded

## Optional Features

- Kits available with VPG® Sensortronics 65016 load cells, capacities (per module): 1,000 lb-25,000 lb (453.6 kg-11,339.8 kg)

## Load Cell Certifications



# RL1600 Series

Cast Iron Weigh Modules

## Order Information

LOAD RATING (PER MODULE)	PART #	PRICE
<b>Single Module (Does NOT Include Load Cell)</b>		
1,000 lb-5,000 lb (453.6 kg-2,268.0 kg)	17964	\$150.00
10,000 lb-25,000 lb (4,535.9 kg-11,339.8 kg)	17965	290.00
<b>3-Module Kit</b>		
1,000 lb (453.6 kg)	25663	1,995.00
1,500 lb (680.4 kg)	25664	1,995.00
2,000 lb (907.2 kg)	25665	1,995.00
2,500 lb (1,134.0 kg)	25666	1,995.00
3,000 lb (1,360.8 kg)	25667	1,995.00
5,000 lb (2,268.0 kg)	25668	1,995.00
10,000 lb (4,535.9 kg)	25669	2,595.00
15,000 lb (6,803.9 kg)	25671	2,595.00
20,000 lb (9,071.9 kg)	25672	2,595.00
25,000 lb (11,339.8 kg)	25674	2,595.00
<b>4-Module Kit</b>		
1,000 lb (453.6 kg)	25675	2,550.00
1,500 lb (680.4 kg)	25676	2,550.00
2,000 lb (907.2 kg)	25677	2,550.00
2,500 lb (1,134.0 kg)	25678	2,550.00
3,000 lb (1,360.8 kg)	25679	2,550.00
5,000 lb (2,268.0 kg)	25680	2,550.00
10,000 lb (4,535.9 kg)	25681	3,350.00
15,000 lb (6,803.9 kg)	25682	3,350.00
20,000 lb (9,071.9 kg)	25683	3,350.00
25,000 lb (11,339.8 kg)	25684	3,350.00

## Load Cell Upgrade

RL75016SS Stainless Steel Load Cells
3 mount kits, 1,000 lb to 25,000 lb \$75.00 added to list price
4 mount kits, 1,000 lb to 25,000 lb \$100.00 added to list price
RL75016WHE Stainless Steel Hermetic Load Cells
3 mount kits 1,000 lb to 5,000 lb \$390.00, 10k-25k \$435.00 added to list price
4 mount kits 1,000 lb to 5,000 lb \$520.00, 10k-25k \$580.00 added to list price

Contact factory for a 50,000 lb to 75,000 lb upgrade

# VPG Sensortronics 65016

## Order Information

LOAD RATING (PER MODULE)	PART #	PRICE
<b>3-Module Kit</b>		
1,000 lb (453.6 kg)	25685	\$2,350.00
1,500 lb (680.4 kg)	25686	2,350.00
2,500 lb (1,134.0 kg)	25688	2,350.00
5,000 lb (2,268.0 kg)	25690	2,350.00
10,000 lb (4,535.9 kg)	25691	2,950.00
15,000 lb (6,803.9 kg)	25692	2,950.00
20,000 lb (9,071.9 kg)	25693	2,950.00
25,000 lb (11,339.8 kg)	25694	2,950.00
<b>4-Module Kit</b>		
1,000 lb (453.6 kg)	25695	3,050.00
1,500 lb (680.4 kg)	25696	3,050.00
2,500 lb (1,134.0 kg)	25698	3,050.00
5,000 lb (2,268.0 kg)	25700	3,050.00
10,000 lb (4,535.9 kg)	25701	3,875.00
15,000 lb (6,803.9 kg)	25702	3,875.00
20,000 lb (9,071.9 kg)	25703	3,875.00
25,000 lb (11,339.8 kg)	25704	3,875.00
<b>Dummy Load Cells</b>		
1,000 lb-5,000 lb (453.6 kg-2,268.0 kg)	18236	20.00
10,000 lb-25,000 lb (4,535.9 kg-11,339.8 kg)	18237	35.00

## Shims, Mild Steel

	PART #	PRICE
<b>1,000 lb-5,000 lb</b>		
0.0625	150844	\$1.00
0.125	150845	1.50
0.250	150846	1.75
<b>10,000 lb-25,000 lb</b>		
0.0625	150847	3.50
0.125	150848	6.00
0.250	150849	6.50