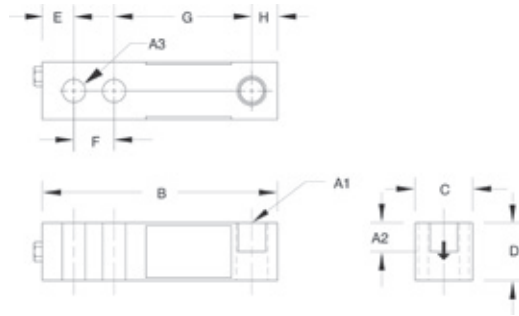


# RL30000

Single-ended Beam, Alloy Steel, NTEP Certified 1:5000 IIIIL Class III Multiple Cell, IP67



Picture is a representation of actual product



## Specifications

### Full Scale Output:

3.0mV/V

### Bridge Resistance:

350 ohms, nominal

### Material/Finish:

High-alloy steel, nickel plated

### Seal Type:

Environmentally sealed, IP67

### Safe Overload:

150% full scale

### Safe Sideload:

100% full scale

### Temperature:

Compensated range  
14° F to 104° F/-10° C to 40° C  
Operating range  
-40° F to 150° F/-40° C to 65° C

### Rated Excitation:

5-10 VDC (15 V maximum)

### Nonlinearity:

0.03% full scale

### Hysteresis:

0.02% full scale

### Insulation Resistance:

5,000 megohms

### Deflection at Capacity:

250 lb to 1,000 lb=0.013 in (0.33 mm)  
2,000 lb to 3,000 lb=0.015 in (0.38 mm)  
4,000 lb to 5,000 lb=0.025 in (0.64 mm)  
10,000 lb=0.032 in (0.81 mm)  
15,000 lb to 20,000 lb=0.038 in (0.97 mm)

### Cable Length:

20 ft (6.1 m)

### Cable Diameter:

0.200 polyurethane jacket

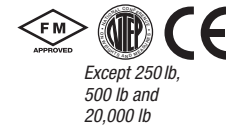
### Cable Color Code:

Red .....+ Excitation  
Black.....- Excitation  
Green .....+ Signal  
White .....- Signal

### Warranty:

Two-year limited warranty

### Approvals:



## Dimensions

RATED CAPACITY	A1*	A2†	A3*	B	C	D	E	F	G	H
<b>lb/inches</b>										
250-5,000 SE**	1/2-20 UNF-2B	0.60	0.53	5.12	1.25	1.25	0.62	1.00	3.00	0.50
5,000 LE***-10,000	3/4-16 UNF-2B	0.75	0.78	6.75	1.50	1.50	0.75	1.50	3.75	0.75
20,000	1-12 UNF-2B	1.00	1.03	8.75	2.00	2.00	1.00	2.00	4.75	1.00
<b>kg/mm</b>										
113.4-2,268 SE**	1/2-20 UNF-2B	15.2	13.5	130.1	31.8	31.8	15.8	25.4	76.2	12.7
2,268.0 LE***-4,535.9	3/4-16 UNF-2B	19.1	19.8	171.5	38.1	38.1	19.1	38.1	95.3	19.1
9,071.9	1-12 UNF-2B	25.4	26.2	222.3	50.8	50.8	25.4	50.8	120.7	25.4

## Order Information

LOAD RATING	PART #	EST. SHIPPING WEIGHT	PRICE
<b>RL30000 NTEP Certified, Threaded-Hole Design</b>			
1,000 lb (453.6 kg)	21491	3 lb	\$295.00
2,000 lb (907.2 kg)	21493	3 lb	295.00
2,500 lb (1134.0 kg)	21495	3 lb	295.00
3,000 lb (1360.8 kg)	21497	3 lb	295.00
4,000 lb (1814.4 kg)	21498	3 lb	295.00
5,000 lb SE** (2268.0 kg)	21500	3 lb	295.00
5000 lb LE*** (2268.0 kg)	21501	5 lb	375.00
10,000 lb (4535.9 kg)	21503	5 lb	375.00
<b>RL30000 Non-NTEP Certified, Threaded-Hole Design</b>			
250 lb (113.4 kg)	17341	3 lb	295.00
500 lb (226.8 kg)	17342	3 lb	295.00
20,000 lb (9071.9 kg)	17109	10 lb	645.00
<b>Conduit Adapter Kit (must be factory installed to maintain warranty)</b>			
3/8-24 nipple	31533****	1 lb	30.00
3/8-24 to 1/4-18 NPT	31534****	1 lb	30.00

\*Dimension A1 is identical to A3 on the RL30002 thru-hole model

\*\*SE refers to small envelope

\*\*\*LE refers to large envelope

\*\*\*\*PN 31533 and PN 31534 must be installed together to form the Conduit Adapter Kit.

## Interchangeable Products

MANUFACTURER	MODEL	PAGE #
Threaded-hole design	—	—
VPG Reverse®	5123	269
VPG Tedeo-Huntleigh®	3411	330
Artech®	30310	—

## Weigh Module Available

MANUFACTURER	MODEL	PAGE #
Rice Lake Weighing Systems	RL50210 TA	52
Rice Lake Weighing Systems	RL1800 Series	62