

RLBTM Mild/Stainless

Mild Steel/Stainless Steel Weigh Modules

Standard Features

- Capacities (per module): 500 lb-5,000 lb SE mild steel/1,000 lb-4,000 lb stainless steel
- Zinc plated mild steel construction or stainless steel
- Self-checking, multi-directional movement
- Design incorporates a ball and cup for self centering
- The RLBTM will accommodate a standard shear beam 500 lb-5,000 lb SE load cell that has a threaded load hole: RL30000, RL39123, RL35023, RL35082, RL35083

Applications

- Light- to medium-capacity tanks and hoppers
- Conveyors



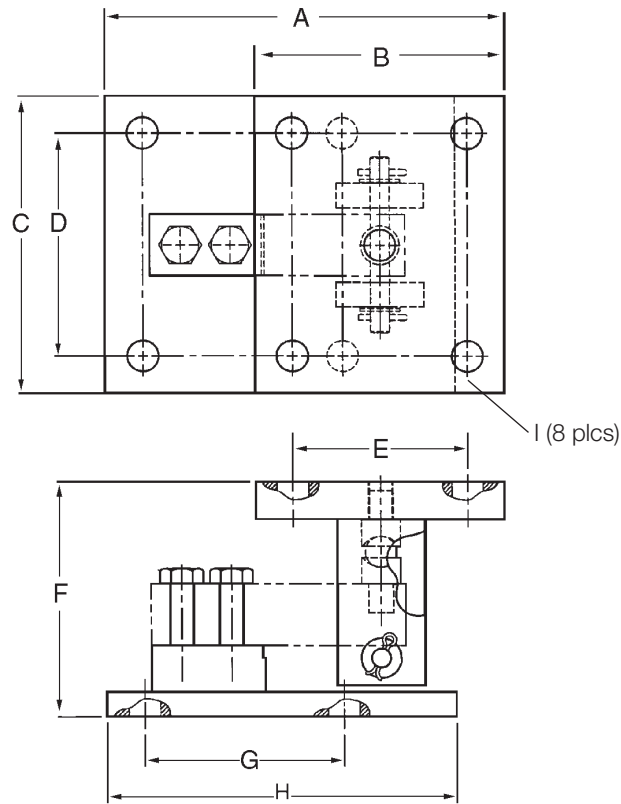
Does not include load cell.

Picture is a representation of actual product

The RLBTM mount was specifically created to take advantage of the improved load introduction accuracy of the ball and cup design. This multi-purpose mount is ideal for both indoor and outdoor applications, and can be used with a variety of single-ended beam load cells. Available in both mild and stainless steel, the RLBTM offers superior accuracy at an affordable price. These assemblies are also quick and easy to install, making the RLBTM the perfect choice for low-capacity, multi-purpose weighing needs.

RLBTM Mild/Stainless

Mild Steel/Stainless Steel Weigh Modules



Dimensions

RATED CAPACITY	A	B	C	D	E	F	G	H	I
lb/inches									
250-5,000 SE*	8.00	5.00	6.00	4.50	3.50	4.75	4.00	7.00	0.63
kg/mm									
113.4/2,268.0	203.2	127.00	152.4	114.3	88.9	120.6	101.6	177.8	16.0

Mild Steel Order Information

LOAD RATING (PER MODULE)	PART #	PRICE
Single Module (Does NOT Include Load Cell)		
500 lb-5,000 lb SE* (113.4 kg-2,268.0 kg)	53059	\$350.00

*SE refers to small envelope

Stainless Steel Order Information

LOAD RATING (PER MODULE)**	PART #	PRICE
Single Module (Does NOT Include Load Cell)		
1,000 lb-4,000 lb (453.6-1,814.4 kg)	53066	\$535.00