

SG



Stancor SG Series Submersible Grinder Pump

For residential, industrial and municipal wastewater applications. All solids are reduced to particles allowing the use of small diameter piping connected to the conventional sewage system.

Output:

2, 3, 5 and 7.5 HP

Construction:

- Completely water-tight cable entry sealed with epoxy resin, the individual cores are embedded in cast resin to prevent water tracking.
- Durable cast iron outer case with amply dimensioned cooling ribs achieves superior heat dissipation.

Motor:

- Oil-free hermetically sealed, with built-in thermal overload protector.
- 1 & 3 phase, 2 pole, 60Hz 3450 rpm, Insulation Class F=155°C (3 phase only over 2 HP), Protection type 1P68. (50 Hz version available upon request.)

Bearing:

- The motor shaft is supported by lubricated-for-life and maintenance free ball bearings.

Shaft Sealing:

- Double mechanical seals (one TC/TC or SIC/SIC + one Carbon/Ceramic) ensure greatest durability.

Impeller:

- The well-balanced impeller is made of a special hardened alloy to handle waste slurry without clogging or binding. No close clearance and all flow passages are unobstructed.

Grinder Impeller & Shredding Ring:

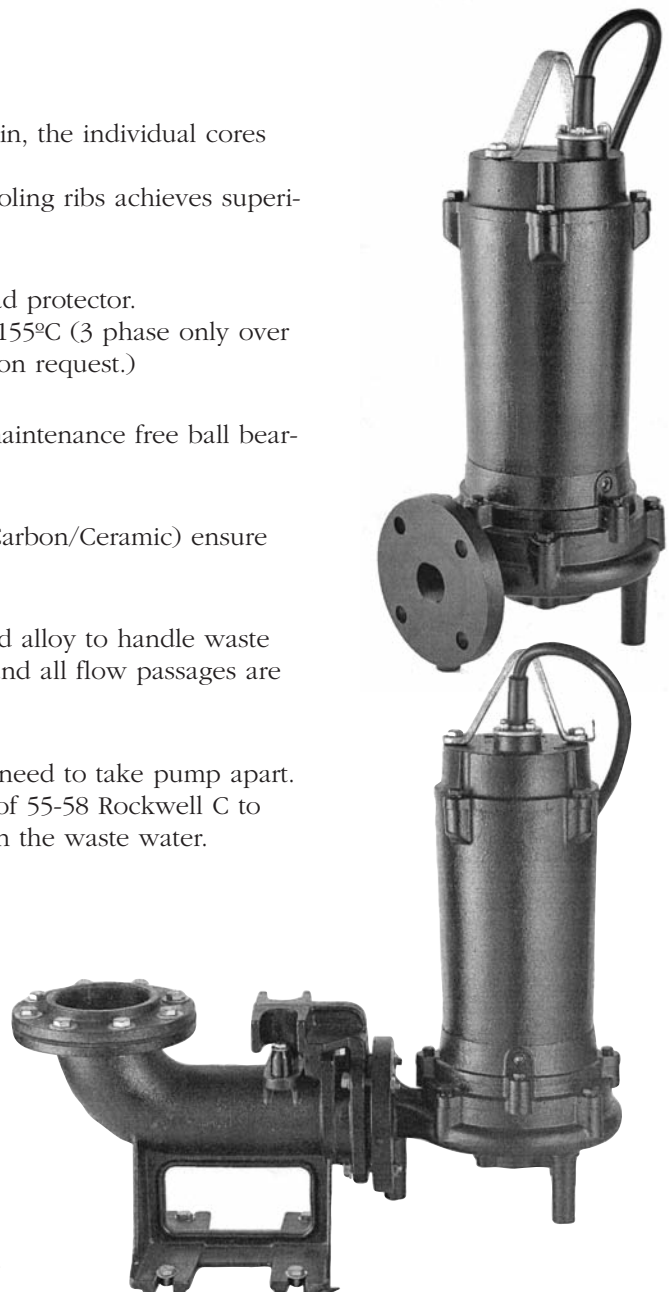
- Grinder impeller and shredding ring are replaceable, no need to take pump apart. The parts are made of High Chrome Steel with hardness of 55-58 Rockwell C to break up paper, textile material and solid contaminants in the waste water.

Others:

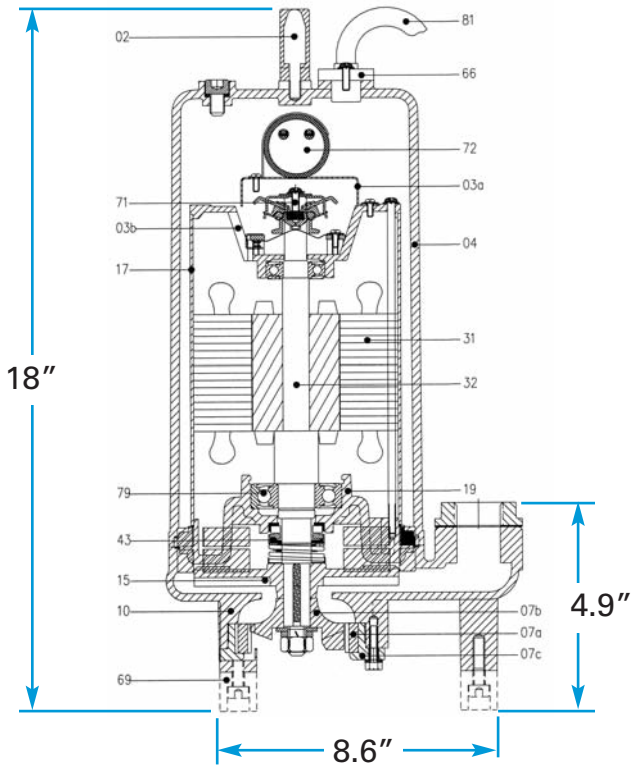
- Max. liquid temperature: 40°C (104°F)
- Standard cable: 33' length.
- Guide Rail systems & Automatic Control Panels with float switches are available upon optional request.

Applications:

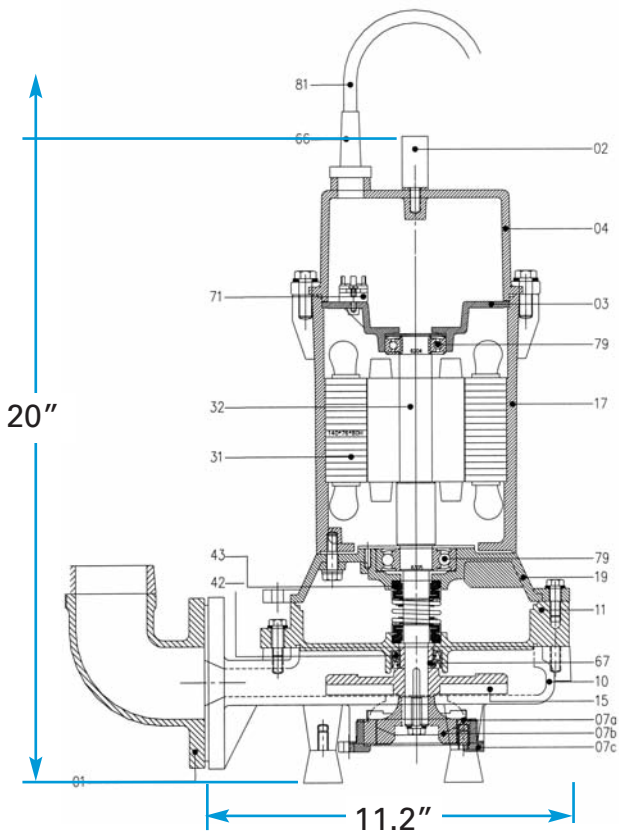
- Individual residential and low pressure sewer applications.
- Pump slurry or wastewater to a treatment plant, lagoon, or gravity manhole through a discharge pipe as small as 1¼" in diameter.
- Waste treatment for villas, summer houses and other residential areas which can not be directly connected to the existing sewage system.



SG200



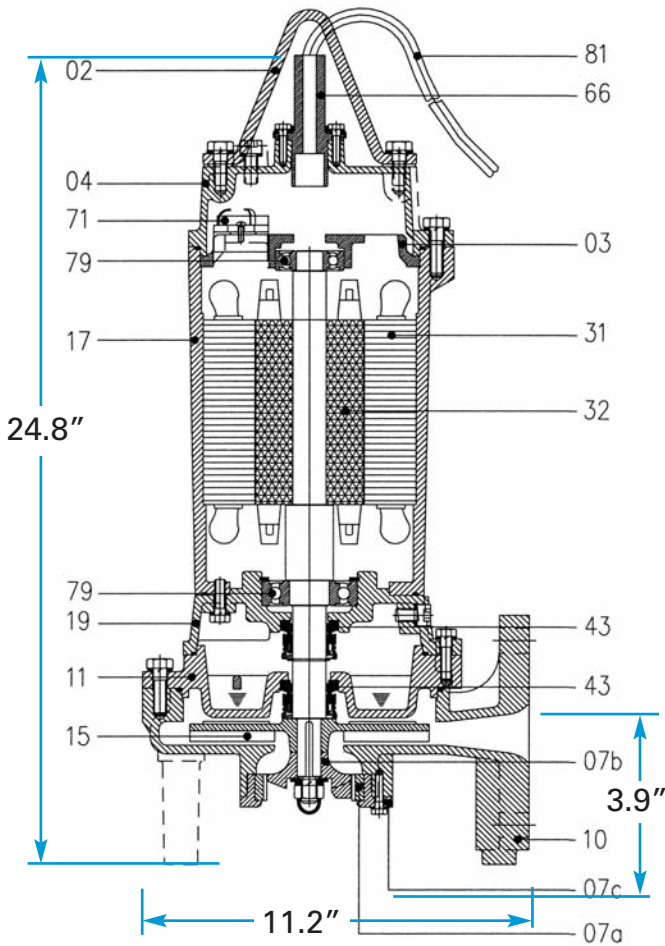
SG300



Item # (see prior page)	Part Description	Material Construction
1	Discharge Head	FC-20
2	Handle	SUS-304
3	Switch Plate	FC-20
3a (SG200)	Switch Plate	SC
3b (SG200)	Switch Plate	ALU
4	Upper Cover	FC-20
7a	Shredder Ring	High Chrome Steel
7b	Shredder Cutter	High Chrome Steel
7c	Shredder Ring Bracket	FC-20
10	Pump Casing	FC-20
11	Seal Bracket	FC-20
15	impeller	FC-20
17 (SG200)	Motor Frame	SC
17 (SG300)	Motor Frame	FC-20
19	Bearing Bracket	FC-20
31	Stator	
32	Rotor / Shaft	SUS-410
42 (SG200)	Oil Seal	SUS-304
43	Mechanical Seal	
66	Cable Gland	NBR
67 (SG300)	Shaft Sleeve	SUS-304
69 (SG200)	Feet Support	
71	Switch	
72	Capacitor	
79	Bearing	
81	Cable	

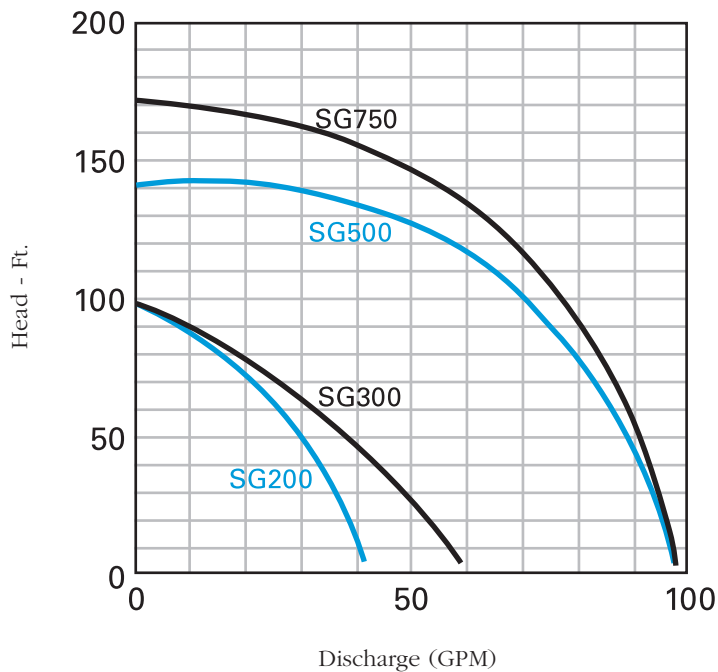
Specifications apply to both SG200 & SG300 unless otherwise noted

SG500 & SG750

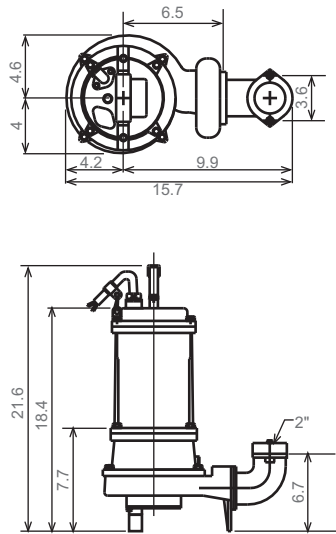


Item # (see prior page)	Part Description	Material Construction
2	Handle	FCD-45
3	Switch Plate	FC-20
4	Upper Cover	FC-20
7a	Shredder Ring	
7b	Shredder Cutter	
7c	Shredder Ring Bracket	FC-20
10	Pump Casing	FC-20
11	Seal Bracket	FC-20
15	impeller	FC-20
17	Motor Frame	FC-20
19	Bearing Bracket	FC-20
31	Stator	
32	Rotor / Shaft	SUS-410
43	Mechanical Seal	
66	Cable Gland	NBR
71	Switch	
79	Bearing	
81	Cable	

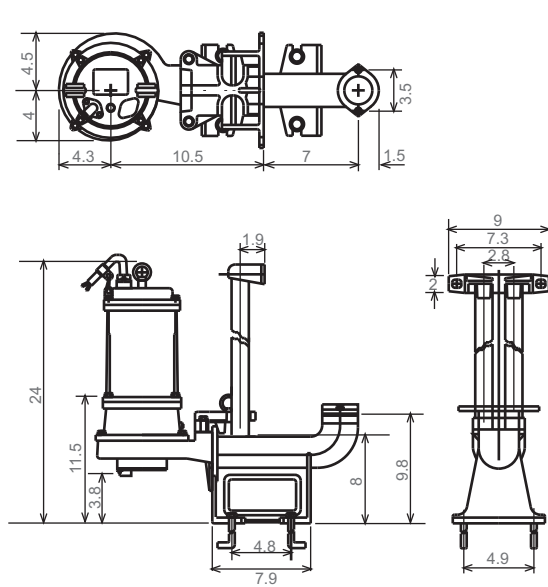
Hydraulic Performance



Portable Installation



Guiderail Installation



Free Standing Installation

The basic portable design with base can be fitted with flexible hose and quick-release coupling or alternatively fixed pipework in which case a flexible pipe connector should be inserted between pump and riser pipe.

Mounting Arrangement with Guide Rail System

Guide rail installation allows the pump to easily be removed from the sump for inspection without any connections having to be unscrewed. A duckfoot discharge bend with special quick-release coupling is bolted to the bottom of the sump and the pump is lowered into position on a guide rail.

General & Electrical Specifications

MODEL	OUTLET INCH	OUTPUT		VOLTAGE	FL AMPS	MAX HEAD Ft.	MAX CAPACITY USGPM	WEIGHT lb.
		KW	H.P.					
SG200	1.25	1.5	2	230 or 460		97	42	84
SG200/1	1.25	1.5	2	220/1 PH		97	42	84
SG300	1.25	2.2	3	230 or 460		98	59	93
SG500		3.7	5	230 or 460		140	98	
SG750		5.5	7.5	230 or 460		172	98	

Options:

- Complete control system for automatic operation
- Guiderail systems for easy-out/easy-in plumbing



Quality You Can Believe In

Stancor, Inc. • 515 Fan Hill Road • Monroe, CT 06468
 Phone: 203-268-7513 • Fax: 203-268-7958 • www.stancorpumps.com