

O.E.M GAUGES



For Installation and Operation Manuals
Please Visit: www.midwestinstrument.com/literature

Mid-West
Instrument

Mid-West[®] Instrument

O.E.M “Piston Type” Differential Pressure Gauges & Switches Models 126 & 127



Common Applications

- Filter Monitoring
- Strainer Monitoring
- Water System Applications
- Refrigerant Filtration Systems

126/127 Specifications:

- (126) Differential Pressure Range 0-5 PSID (0-0.35 bar) to 0-20 PSID (0-1.4 bar)
- (127) Differential Pressure Range 0-25 PSID (0-1.7 bar) to 0-100 PSID (0-7 bar)
- Accuracy $\pm 5\%$ Full Scale Ascending
- Dial Size
 - Single 1-1/4" x 2-1/4" Oval (Std.)
 - Dual 1-1/4" x 2-1/4" Oval (Opt.)
- Working Pressure 3,000 PSIG (200 bar)
- Operating Temp. -40° F To +200° F (-40°C to 93°C)
- Body Material - Aluminum (Std.), 316/316L SS (Opt.)
- Internal Materials - 316 Stainless Steel
- Elastomers - Buna-N (Std), Viton[®]* , Neoprene, Ethylene-Propylene,
- Switch Option
 - SPDT 3W, 125 VAC/VDC, 0.25 Amp
 - SPST 60W, 240 VAC/VDC, 3 Amp
- Switch Mounting Clamp On, Stick On Flat Pack
- Process Connections 1/8" FNPT Bottom (Std) 1/8" FNPT End Conn. (Opt.)
- Dimensions 1.25H" x 1.62W" x 2.48L"
- Weight 0.5#

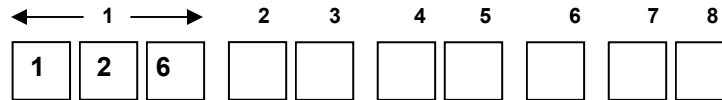
* Viton[®] is a Registered Trademark of DuPont Dow Elastomers

Model 126/127 Bottom
Connections Shown



Model "126" 3000 PSIG Working Pressure, S.S. Piston, Aluminum or S.S. Body & End Plug,
Accuracy ±5% F.S. (Ascending), 1/8" FNPT Bottom Mount,
Range: **0-5 PSID thru 0-20 PSID**

Model "127" 3000 PSIG Working Pressure, S.S. Piston, Aluminum or S.S. Body & End Plug,
Accuracy ±5% F.S. (Ascending), 1/8" FNPT Bottom Mount, Range:
0-25 PSID thru 0-100 PSID



2	Material
A	Aluminum Body / Stainless Steel Piston
S	316 S.S Body / Stainless Steel Piston
Z	Special (<i>Un-coded Options</i>)
3	Dial Size & Type
W	One
X	Two
Z	Special (<i>Un-coded Options</i>)
4	Seal Materials
0	Buna-N
1	Viton®-A Registered Trademark of Dupont
2	Neoprene
5	Ethylene Propylene
9	Special (<i>Un-coded Options</i>)
5	Process Connections
0	1/8" FNPT Bottom Connections
2	1/8" FNPT End Connections
9	Special (<i>Un-coded Options</i>)
6	Options
O	None
Z	Special (<i>Un-coded Options</i>)
7	Electrical Configuration
A	(1) Switch (clamp-on) Switch adjustable range 10 to 100%
B	(2) Switches (clamp-on) Switch adjustable range 10 to 100%
C	(1) Switch (Flat Pack) Non-Adjustable
D	(1) Switches (Flat Pack) Non-Adjustable
E	(1) Switch (clamp-on) Switch adjustable range ±15%
F	(2) Switches (clamp-on) Switch adjustable range ±15%
Z	Special (<i>Un-coded Options</i>)
8	Electrical Specifications
A	SPDT 3W .025 Amp 125 VAC/VDC (Flat-Pack)
C	SPST 60W 3.0 Amp 240 VAC/VDC (Clamp-On & Flat-Pack)
Z	Special (<i>Un-coded Options</i>)

*** Special "OEM" Box car number will be assign upon order.**

***Gauges must be purchased in quantities of 25 units.**

Mid-West[®] Instrument

O.E.M “Diaphragm Type” Differential Pressure Gauge & Switch Model 146

Common Applications



- Filter monitor for initiating backwash cycles
- Strainer Monitoring
- Water Systems applications
- Hydro applications
- Pump performance monitoring
- Refrigerant filtration systems
- Replacement indicating switch for competitor switches that do not offer local indication

Specifications:

- Differential Pressure 0-50" H₂O (0-125 mbar) to 0-30 PSID (0-2.0 bar)
- Accuracy $\pm 5\%$ Full Scale Ascending
- Dial Size
 - Single 1-1/4" x 2-1/4" Oval (Std.)
 - Dual 1-1/4" x 2-1/4" Oval (Opt.)
- Working Pressure 1,000 PSIG (200 bar)
- Operating Temp. -40° F To +200° F (-40°C to 93°C)
- Body Material – Aluminum, Brass & 316L Stainless Steel
- Internal Materials - 316 Stainless Steel
- Elastomers - Buna-N (Std), Viton[®]* , Silicone, Neoprene (25 PSID & Below), Ethylene Propylene
- Switch Option
 - SPDT 3W, 125 VAC/VDC, 0.25 Amp
 - SPST 60W, 240 VAC/VDC, 3 Amp
- Process Connections 1/8" FNPT Bottom
- Dimensions 1.7H" x 2.5W" x 2.9L"
- Weight 2.5#

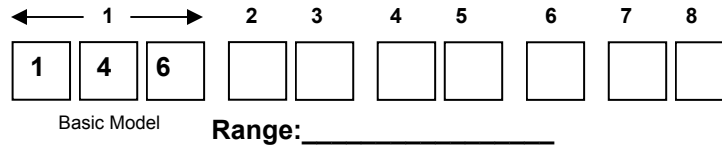


* Viton[®] is a Registered Trademark of DuPont Dow Elastomers

Operation: Differential pressure is sensed by flexible elastomer diaphragm and a calibrated spring. A magnetic coupling transmits the sensing element motion to an indicating pointer. This prohibits the possibility of fluid leaking into the gauge case, while assuring total isolation of the process fluid within the pressure capsule. The diaphragm assures total separation between high and low pressure signals. It is totally supported at full travel in either direction.

Temperature Limits: -40 °F (-40° C) to 200°F (93°C). These limits are based on the entire instrument being saturated to these temperatures. System (process) temperatures may exceed these limitations with proper installation. Contact our customer service representative for details.

Model "146" 1000 PSIG Working Pressure, Buna-N Diaphragm,
Aluminum, Brass or 316 Stainless Steel Body, 316 S.S. Internal Metal Parts
Accuracy $\pm 5\%$ F.S. (Ascending), 1/8" FNPT Bottom Mount
Range: **0-50" H₂O** thru **0-30 PSID**



2	Material
A	Aluminum Body
B	Brass Body
S	316 Stainless Steel Body
Z	Special (<i>Un-coded Options</i>)
3	Dial Size & Type
W	One
X	Two
Z	Special (<i>Un-coded Options</i>)
4	Seal Materials
0	Buna-N
1	Viton®-A Registered Trademark of Dupont
2	Silicone
4	Neoprene (<i>25 PSID & below</i>)
5	Ethylene Propylene
9	Special (<i>Un-coded Options</i>)
5	Process Connections
0	1/8" FNPT Bottom Connections (STD)
2	1/8" FNPT Back Connections
6	Options
O	None
Z	Special (<i>Un-coded Options</i>)
7	Electrical Configuration
A	(1) Switch (non-adjustable)
B	(2) Switches (non-adjustable)
C	(1) Switch (non-adjustable) DIN Plug-In Connector
D	(1) Switch (Flat Pack) Non-Adjustable
E	(2) Switches (Flat Pack) Non-Adjustable
F	(1) Switch (Flat Pack) Switch adjustability $\pm 15\%$
G	(2) Switches (Flat Pack) Switch adjustability $\pm 15\%$
Z	Special (<i>Un-coded Options</i>)
8	Electrical Specifications
A	SPDT 3W .025 Amp 125 VAC/VDC (Flat-Pack)
C	SPST 60W 3.0 Amp 240 VAC/VDC (Clamp-On & Flat-Pack)
Z	Special (<i>Un-coded Options</i>)

**Product of switching voltage and current shall not exceed the power rating. Ratings are resistive loads.

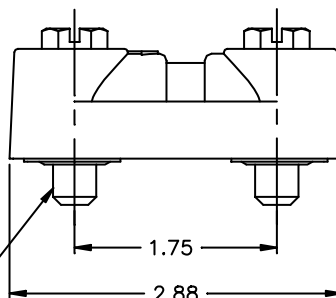
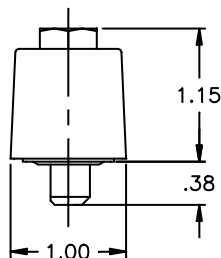
*** Special "OEM" Box car number will be assign upon order.**

***Gauges must be purchased in quantities of 25 units.**

Mid-West[®] Instrument

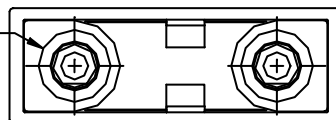
O.E.M “Piston Type” Differential Pressure Indicator Model 444

Model 444 Series differential pressure indicator offers a simple, yet functional design for use with filters, strainers, etc. This low cost indicator makes the perfect alternative to more costly differential pressure gauges where readability, small size and price are important considerations.

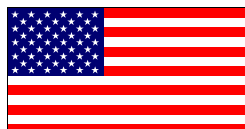


All dimensions in inches.

FLAT AREA OF .625 DIA.
MINIMUM REQUIRED ON
MOUNTING SURFACE—
FOR BOTH BOLTS



Made
in the
USA



Model Number	DP Range	Transition Points	
		Piston Moves @	Indicator all Red @
444-05	0-5 PSID	3.75 PSI	5.25 PSI
444-10	0-10 PSID	7.75 PSI	10.5 PSI
444-15	0-15 PSID	11.75 PSI	15.5 PSI
444-25	0-25 PSID	18.75 PSI	27.0 PSI

Minimum Order Quantity
50 UNITS

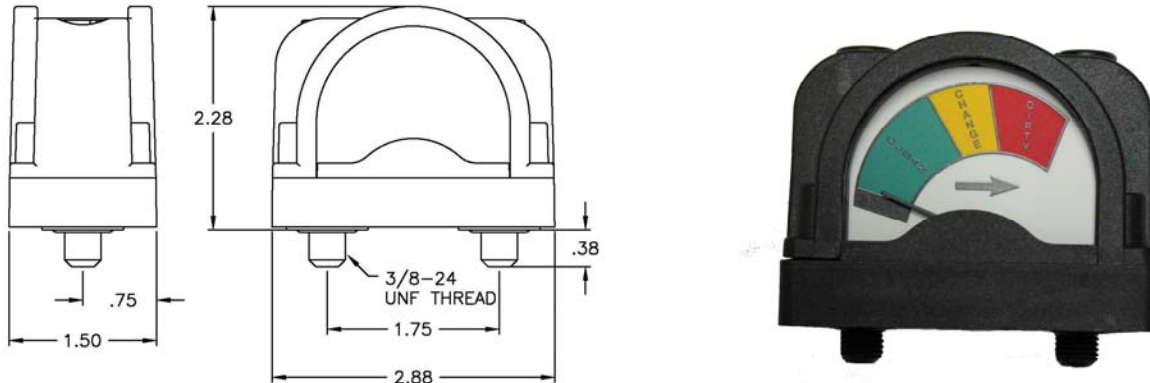
OEM Applications Quoted
Please call with specifications.

SPECIFICATIONS:		Comments:
Maximum Working Pressure	300 PSIG	
Differential Pressure Ranges: **Contact factory for additional ranges	0-5 thru 0-25 PSID**	
Accuracy	± 5% of Rated Differential Pressure Range	Calibrated at Color Transitions
Operating Temperature (Max.)	93°C (200°F)	
MATERIALS OF CONSTRUCTION:		
Body Material	Glass Filled Nylon (GFN) 6/6 Body	
Wetted Internals	Glass Filled Nylon & Stainless Steel	
Elastomers	Buna-N	
Lens	Clear Nylon	
INTERFACE:		
Process Connection:	Slotted Hex Bolt 3/8-24 UNF Chamfered Bolts Ease Installation	Flow Direction Identified on Indicator Body. Arrow Points to Low Pressure Port.

Mid-West[®] Instrument

O.E.M “Diaphragm Type” Differential Pressure Indicator Model 555

Colored bands allow you to quickly identify pressure drop across element.
Divided into three sections, each clearly marked for ease of understanding. Commonly used to indicate when to change or clean a filter. **Example:** 555A-10.0 changes from green to yellow at 5 PSID and from yellow to red at 7.5 PSID. Accuracy is $\pm 5\%$ Full Scale



Model Number	DP Range	Transition Points		
		Green	Yellow	Red
555-3.5	0-3 PSID	0-2.0	2.0-2.5	2.5-3.5
555-5.0	0-5 PSID	0-3.0	3.0-4.5	4.5-5.0
555-10.0	0-10 PSID	0-5.0	5.0-7.5	7.5-10.0
555-12.0	0-12 PSID	0-6.0	6.0-9.0	9.0-12.0
555-15.0	0-15 PSID	0-7.5	7.5-12.0	12.0-15.0
555-25.0	0-25 PSID	0-11.0	11.0-18.5	18.5-25.0
555-30.0	0-30 PSID	0-13.0	13.0-20.0	20.0-30.0
555-43.0	0-43 PSID	0-19.5	19.5-29.5	29.5-43.0

50 Pieces per Shipment Minimum Order Quantity

OEM applications quoted. Please call with specifications.

SPECIFICATIONS:		Comments:
Pressure (Ratings)		
Maximum Working	300 PSIG	
Maximum Differential	150 PSID	
Accuracy	$\pm 5\%$ of Rated Differential Pressure Range	Calibrated at Color Transitions
Operating Temperature (Max.)	93°C (200°F)	
Materials of Construction		
Body Material	Glass Filled Nylon (GFN)	
Wetted Internals	Stainless Steel, Ceramic, & GFN	
Elastomers	Buna	
Movement	Magnetic Piston and Follower Pointer	
Dial	Plastic Lens with 3 Color Dial	
INTERFACE:		
Process Connection:	<p>1/4" FNPT End Connections.</p> <p>To switch HIGH and LOW pressure connections: Remove Indicator from base and rotate 180° - Retighten plastic bolts to 20-25 inch pounds.</p>	Flow Direction Identified on Dial. Arrow Points to Low Pressure Port.

Mid-West[®] Instrument

O.E.M “Diaphragm Type” Differential Pressure Gauges & Switches Model 522



RANGE: 0-5 P.S.I.D. TO 0- 50 P.S.I.D. (.3 bar to 3.4 bar)



Gauge Features:

- Safe Working Pressure: 1000 PSIG (69 bar).
- Aluminum or 316 / 316L SS Gauge Body.
- Wetted Parts: 316 SS, Ceramic, & Acetal components
- Seal & Diaphragm Material: Buna-N or Viton
- 1/4" FNPT Process Connections (End Connected)
- Weather-resistant construction standard.
- Dial Accuracy $\pm 5\%$ standard.
- Switch Only (No Dial) available
- Dial: 0.80" weatherproof multicolored
- 2-1/2" Optional Dial Size

Switch Features:

- Switches are optional
- Hermetically Sealed Switch Outputs up to 3 amps in SPST and up to .25 Amp in SPDT configuration.
- Switch Adjustable from 40% - 95% of Range *
- Up to 240 VAC/VDC voltage ratings
- Available with Flat Pack case with Jacketed Flying Leads or with DIN IP65 / NEMA 4X Plug-in Connector.
- Optional Switch Set Feedback Decal
- Switch Location Top or Bottom
- CE Marking for Compliance with the Low Voltage Directive is available upon request.
- *Dependent on selected switch option.



Operation: Differential pressure is sensed by flexible elastomer diaphragm and a calibrated spring. A magnetic coupling transmits the sensing element motion to an indicating pointer. This prohibits the possibility of fluid leaking into the gauge case, while assuring total isolation of the process fluid within the pressure capsule. The diaphragm assures total separation between high and low pressure signals. It is totally supported at full travel in either direction.

Temperature Limits: -40 °F (-40° C) to 200°F (93°C). These limits are based on the entire instrument being saturated to these temperatures. System (process) temperatures may exceed these limitations with proper installation. Contact our customer service representative for details.

Standards: All Model 522 Series differential pressure gauges either conform to and/or are designed to the requirements of the following standards: ASME B1.20.1 NACE MR0175, ASME B40.100 NEMA Std. 250, EN-61010-1 UL Std. No. 50 & 508, CSA-C22.2 No. 14

Factory Preset of switches available at no charge (Specify switch setting on the order)

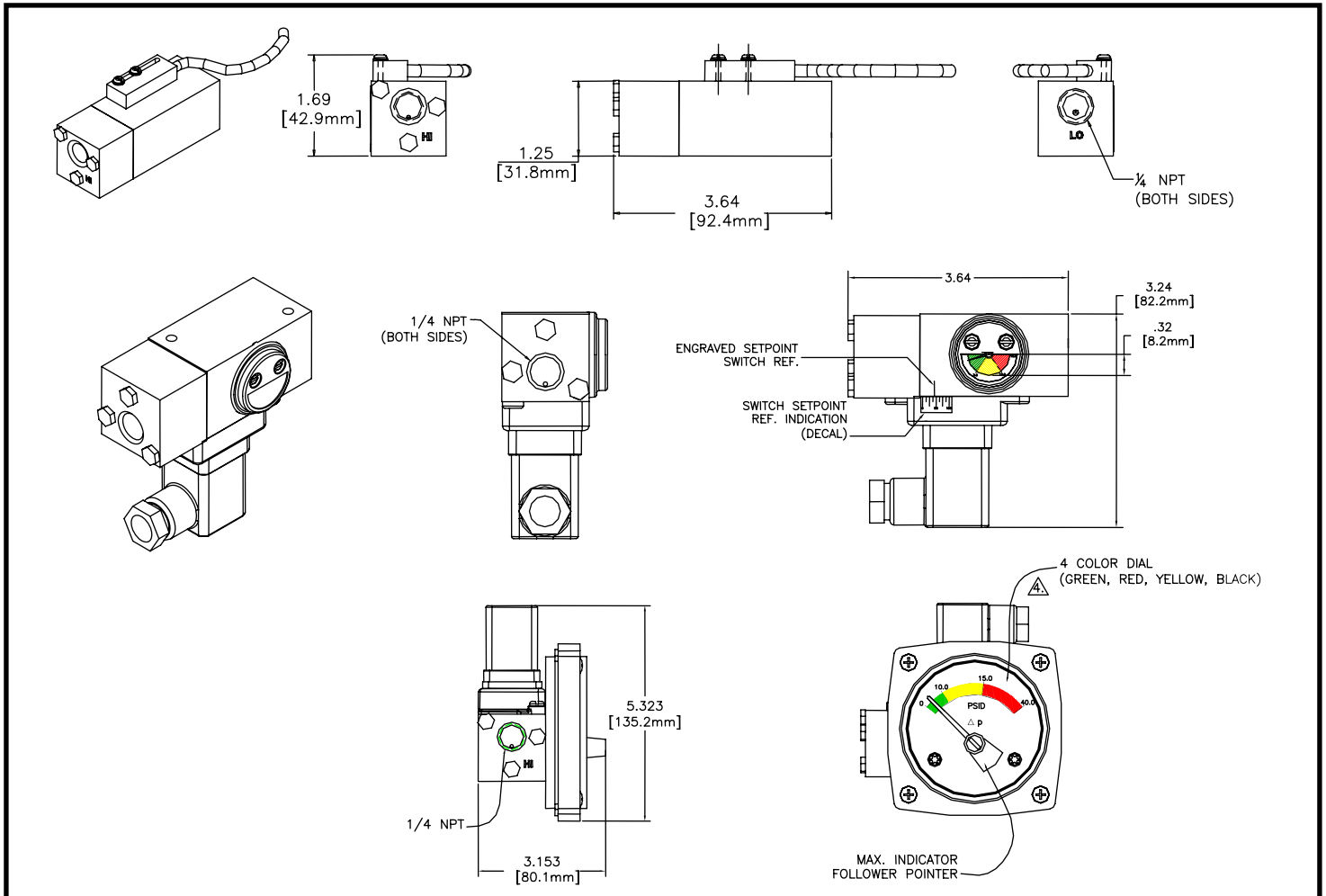
The use of diaphragm seals is not recommended.

Attempts to install such seals on this gauge will void the warranty

Ordering Information:

Contact factory for desired configuration options & pricing.

Dimensional:



TEMPERATURE LIMITS: -40 F (-40 C) to 200 F (93 C). These limits are based on the entire instrument being saturated to these temperatures. System (process) temperatures may exceed these limitations with proper installation. Contact our customer service representative for details.

STANDARDS: All Model 522 Series differential pressure gauges either conform to and/or are designed to the requirements of the following standards:

ASME B1.20.1	NACE MR0175
ASME B40.100	NEMA Std. 250
EN-61010-1	UL Std. No. 50 & 508
CSA-C22.2 No. 14	

Factory Preset of switches available at no charge (Specify Setting on the order)

The use of diaphragm seals is not recommended. Attempts to install such seals on this gauge will void the warranty

Mid-West[®] Instrument

6500 Dobry Dr. Sterling Heights, MI 48314

Ph: (586)254-6500 FAX (586)254-6509

Toll Free: (800)648-5778

E-Mail: sales@midwestinstrument.com

Web Page: www.midwestinstrument.com

