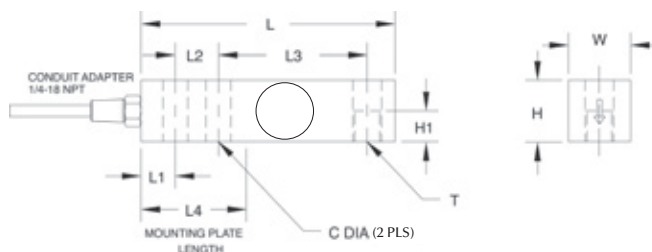


RL35083



Single-ended Beam, Stainless Steel, Welded-seal, IP67



Picture is a representation of actual product



Specifications

Full Scale Output: 3.0mV/V	Safe Overload: 150% full scale	Deflection at Capacity: 1,000 lb-4,000 lb=0.008 in-0.026 in (0.203 mm-0.66 mm) 5,000 lb-10,000 lb=0.030 in-0.055 in (0.76 mm-1.397 mm)	Conduit Adapter Size: 1/4-18 NPT
Output Resistance: 349-355 ohms	Safe Sideload: 100% full scale	Seal Type: Welded-seal strain gauge, IP67	Cable Color Code: Red+ Excitation Black.....- Excitation Green.....+ Signal White- Signal
Input Resistance: 343-357 ohms	Rated Excitation: 5-10 VDC (15 V maximum)	Cable Length: 20 ft (6.1 m)	Warranty: Two-year limited warranty
Material/Finish: Stainless steel	Combined Error: 0.03% full scale	Cable Diameter: 0.220 PTFE coated cable	Approvals:  
Temperature: Operating range -40° F to 150° F/-40° C to 65° C	Non-Repeatability: 0.01% full scale		
	Insulation Resistance: 5,000 megohms		

Dimensions

RATED CAPACITY	C	H	H1	L	L1	L2	L3	L4	T	W
lb/inches										
1,000-4,000	0.53	1.22	0.61	5.12	0.62	1.00	3.00	2.25	1/2-20 UNF-2B	1.22
5,000-10,000	0.78	1.50	0.75	6.75	0.75	1.50	3.75	3.00	3/4-16 UNF-2B	1.50
kg/mm										
453.6-1,814.4	13.5	31.0	15.5	130.0	15.7	25.4	76.2	57.2	1/2-20 UNF-2B	31.0
2,268.0-4,535.9	19.8	38.1	19.1	171.5	19.1	38.1	95.3	76.2	3/4-16 UNF-2B	38.1

Order Information

LOAD RATING		PART #	EST. SHIPPING WEIGHT	PRICE
1,000 lb	(453.6 kg)	17252	3 lb	\$405.00
2,500 lb	(1,134.0 kg)	17253	3 lb	405.00
4,000 lb	(1,814.4 kg)	17254	3 lb	405.00
5,000 lb	(2,268.0 kg)	17255	5 lb	455.00
10,000 lb	(4,535.9 kg)	17256	5 lb	455.00

Conduit is recommended for maximum protection against the ingress of water and moisture through the cable entry

Interchangeable Products

MANUFACTURER	MODEL	PAGE #
VPG Sensortronics®	65083	308
VPG Celtron®	SQB-HSS	201

Weigh Module Available

MANUFACTURER	MODEL	PAGE #
Rice Lake Weighing Systems	RL50210	52
Rice Lake Weighing Systems	RL1800 Series	62