



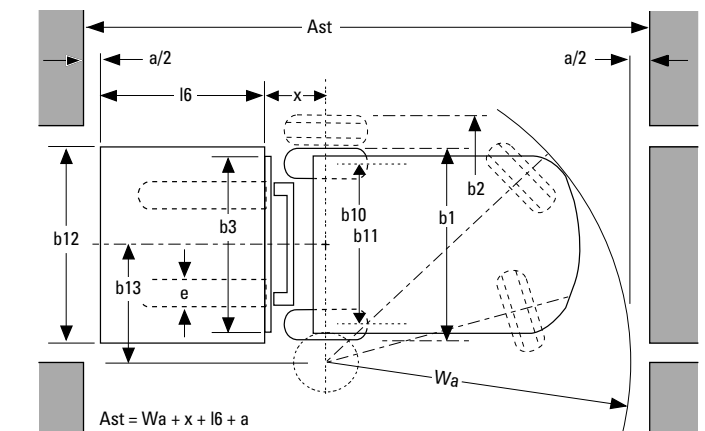
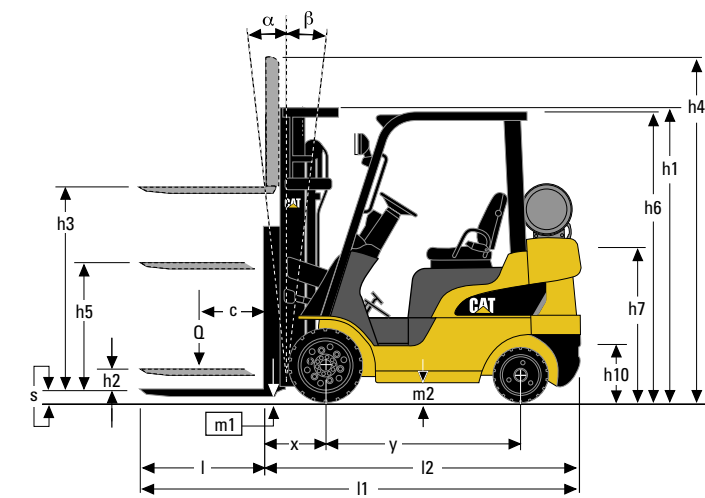
GC20N - GC25N - GC30N - GC33N

Specifications

Engine powered lift trucks

2.0 - 3.0 tonnes

Characteristics			Cat Lift Trucks	Cat Lift Trucks	Cat Lift Trucks	Cat Lift Trucks
1.01	Manufacturer (abbreviation)		GC20N	GC25N	GC30N	GC33N
1.02	Manufacturer's model designation		LPG	LPG	LPG	LPG
1.03	Power source: (battery, diesel, LP gas, petrol)		Seated	Seated	Seated	Seated
1.04	Operator type: pedestrian, (operator)-standing, -seated		2000	2500	3000	2950
1.05	Load capacity	Q (kg)	500	500	500	600
1.06	Load centre distance	c (mm)	415	420	435	435
1.08	Load distance, axle to fork face	x (mm)	1400	1400	1400	1400
1.09	Wheelbase	y (mm)				
Weight						
2.01	Truck weight, without load / including battery (simplex mast, lowest lift height)	kg	3320	3680	4280	4480
2.02	Axle loading with maximum load, front/rear (simplex mast, lowest lift height)	kg	4530/-	5200/-	6040/-	6350/-
2.03	Axle loading without load, front/rear (simplex mast, lowest lift height)	kg	1380 / 1950	1270 / 2420	1280 / 2980	1190 / 3210
Wheels, Drive Train						
3.01	Tyres: V=solid, L=pneumatic, SE=solid pneumatic - front/rear		V / V	V / V	V / V	V / V
3.02	Tyre dimensions, front		21 x 7 x 15	21 x 7 x 15	21 x 8 x 15	21 x 8 x 15
3.03	Tyre dimensions, rear		16 x 6 x 10-1/2	16 x 6 x 10-1/2	16 x 6 x 10-1/2	16 x 6 x 10-1/2
3.05	Number of wheels, front/rear (x=driven)		2x / 2	2x / 2	2x / 2	2x / 2
3.06	Track width (centre of tyres), front	b10 (mm)	886.4	886.4	911.8	911.8
3.07	Track width (centre of tyres), rear	b11 (mm)	890	890	890	890
Dimensions						
4.01	Mast tilt, forwards/backwards	α/β °	5 / 9	5 / 9	5 / 6	5 / 6
4.02	Height with mast lowered (see tables)	h1 (mm)	2110	2110	2110	2230
4.03	Free lift (see tables)	h2 (mm)	80	80	90	90
4.04	Lift height (see tables)	h3 (mm)	3295	3295	3265	3265
4.05	Overall height with mast raised	h4 (mm)	4570	4570	4540	4570
4.07	Height to top of overhead guard	h6 (mm)	2075	2075	2075	2075
4.08	Seat height	h7 (mm)	1050	1050	1050	1050
4.12	Tow coupling height	h10 (mm)	-	-	-	-
4.19	Overall length	l1 (mm)	3320	3385	3475	3475
4.20	Length to fork face (includes fork thickness)	l2 (mm)	2295	2360	2450	2475
4.21	Overall width	b1/b2 (mm)	1065 / 1130	1065 / 1130	1115 / 1155	1115 / 1155
4.22	Fork dimensions (thickness, width, length)	s / e / l (mm)	45 / 100 / 1070	45 / 100 / 1070	45 / 125 / 1070	45 / 125 / 1070
4.23	Fork carriage to DIN 15 173 A/B/no		2A	2A	3A	3A
4.24	Fork carriage width	b3 (mm)	920	920	960	960
4.31	Ground clearance under mast, with load	m1 (mm)	80	80	80	80
4.32	Ground clearance at centre of wheelbase, with load (forks lowered)	m2 (mm)	139	139	139	139
4.33	Working aisle width with 1000 x 1200 mm pallets, crosswise	Ast (mm)	3580	3640	3730	3760
4.34	Working aisle width with 800 x 1200 mm pallets, crosswise	Ast (mm)	3380	3440	3530	3560
4.35	Turning circle radius	Wa (mm)	1965	2020	2095	2125
4.36	Minimum distance between centres of rotation	b13 (mm)	-	-	-	-
Performance						
5.01	Travel speed, with/without load	km/h	17.5 / 18	17.5 / 18	16.5 / 17	16.5 / 17
5.02	Lifting speed, with/without load	m/s	0.58 / 0.59	0.58 / 0.59	0.53 / 0.54	0.53 / 0.54
5.03	Lowering speed, with/without load	m/s	0.50 / 0.50	0.50 / 0.50	0.50 / 0.50	0.50 / 0.50
5.05	Rated drawbar pull, with/without load	N	16700/-	19200/-	20000/-	19900/-
5.06	Maximum drawbar pull, with/without load (5 min short duty)		18900/-	21700/-	22600/-	22600/-
5.07	Gradeability, with/without load	%	35/-	29/-	33/-	31/-
5.08	Maximum gradeability, with/without load	%	40.5/25	34/20	35/17	35/16
5.09	Acceleration time (10 metres) with/without load	s	-	-	-	-
5.10	Service brakes (mechanical/hydraulic/electric/pneumatic)		Hydraulic	Hydraulic	Hydraulic	Hydraulic
IC Engine						
7.01	Manufacturer / Type		K25	K25	K25	K25
7.02	Rated / Nominal output to ISO 1585**	kW	47	47	47	47
7.03	Rated speed to DIN 70 020	rpm	2700	2700	2700	2700
7.04	Number of cylinders / cubic capacity	cm3	4 / 2500	4 / 2500	4 / 2500	4 / 2500
7.05	Fuel consumption according to VDI 60 cycle	l/h / kg/h	-	-	-	-
Miscellaneous						
8.01	Type of drive control		Powershift 1/1	Powershift 1/1	Powershift 1/1	Powershift 1/1
8.02	Maximum operating pressure for attachments	bar	158	158	158	158
8.03	Oil flow for attachments	l/min	89.1	89.1	89.1	89.1
8.04	Noise level, value at operator's ear (EN 12053)	dB(A)	-	-	-	-
8.05	Towing coupling design / DIN type, ref.		-	-	-	-



Ast = Working aisle width with load
a = Safety clearance (200 mm)

l6 = Pallet length (800 or 1000 mm)
b12 = Pallet width (1200 mm)



Lower Cost of Ownership

- Modern design techniques in combination with long life of components result in a long service interval reducing the total cost of ownership.
- Vehicle Control Module manages various truck and operator control functions allowing easy trouble shooting and pin pointing of problems.
- LCD display provides extensive information on truck operation and maintenance state. It also indicates service requirements to prevent unexpected down time and cost due to unscheduled maintenance and service.
- Standard LED front work lights and LED rear combination lights.
- Standard rear grab handle with horn button for extra safety.
- Standard FC control.

Safety and Ergonomics

- Low noise levels at operator's ear contribute to keep the operator concentrated while reducing fatigue in long shifts.
- Advanced fingertip hydraulic controls mounted on a fully adjustable armrest for optimum load handling and easy maneuverability.
- Automotive style pedal layout for easy and comfortable operation.
- Adjustable steering column with memory position that adjust to operator's preference
- Three-point entry: an open step, convenient grab bar and seat hip restraint offer three secure points for easy entry and exit.

Options

- Elevated exhaust
- MC controls
- LED rear working lights and revolving lights
- Dual front wheels
- Integral side shifter

Unmatched Productivity

- State-of-the-art LPG engine with engine management system and regulated catalytic converter for great performance, low noise, economic fuel usage and low emission levels.
- Fully floating powertrain layout to lower the centre of gravity, increases truck stability and residual lifting capacities.
- The GC33N model offers a small truck with 3 tonne capacity on 600 mm load center.

Cat[®] Lift Trucks.

Your partner in materials handling.

GC20N/GC25N					GC20N	GC25N
Mast Type	h3	h1	h4	h2/h5	Q @ c=500mm	Q @ c=500mm
	mm	mm	mm	mm	kg	kg
Simplex	2000	1460	3260	80	2000	2500
	2760	1840	4020	80	2000	2500
	3000	1960	4260	80	2000	2500
	3290	2105	4550	80	2000	2500
	3720	2365	4980	80	2000	2500
	4090	2550	5350	80	2000	2500
Duplex	2820	1870	4090	605	2000	2500
	3000	1960	4270	690	2000	2500
	3300	2110	4570	845	2000	2500
Triplex	4030	1870	5300	605	2000	2500
	4300	1960	5570	695	2000	2500
	4750	2110	6020	845	1950	2450
	5060	2230	6330	965	1900	2400
	5500	2375	6770	1105	1800	1850
	5990	2555	7260	1290	1050	1050

Mast Performance and Capacity

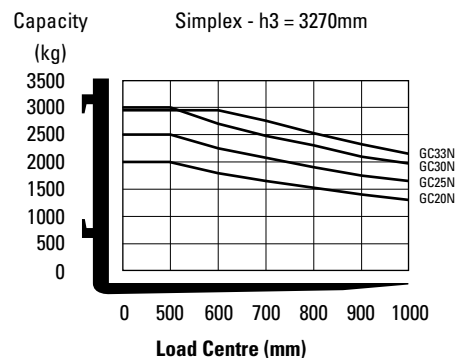
- h1 Height with mast lowered
- h2 Standard free lift
- h3 Standard lift height
- h4 Height with mast raised
- h5 Full free lift
- Q Lifting capacity, rated load
- c Load centre (distance)

The capacities are applicable for cushion tyres (V).

All dimensions include load backrest. In case load backrest is not used h5 will increase by 640 mm (GC20N, GC25N, GC33N), 610 mm (GC30N), while h4 will decrease by 640 mm (GC20N, GC25N), 610 mm (GC30N, GC33N).

GC30N/GC33N					GC30N	GC33N
Mast Type	h3	h1	h4	h2/h5	Q @ c=500mm	Q @ c=600mm
	mm	mm	mm	mm	kg	kg
Simplex	3030	1990	4300	90	3000	2950
	3270	2110	4540	90	3000	2950
	3700	2375	4970	90	3000	2950
	4000	2555	5270	90	3000	2950
Duplex	2770	1870	4040	600	3000	2950
	3000	1990	4270	720	3000	2950
	3250	2110	4520	840	3000	2950
Triplex	4320	1990	5590	720	3000	2950
	4700	2110	5970	840	2950	2950
	5060	2230	6330	960	2900	2850
	5450	2375	6720	1105	1850	1400

Capacities at various load centres



info@catliftruck.com

www.catliftruck.com

CESC1249(06/10)ok

Copyright ©2010, MCFE. All rights reserved.

CATERPILLAR, CAT, their respective logos, 'Caterpillar yellow' and the 'Power Edge' trade dress, as well as corporate and product identity used herein, are trademarks of Caterpillar and may not be used without permission.

Printed in The Netherlands

NOTE: Performance specifications may vary depending on standard manufacturing tolerances, vehicle condition, types of tyres, floor or surface conditions, applications, or operating environment. Trucks may be shown with non-standard options. Specific performance requirements and locally available configurations should be discussed with your Cat lift trucks Dealer. Cat Lift Trucks follows a policy of continual product improvement. For this reason, some materials, options and specifications could change without notice.

CAT Lift Trucks