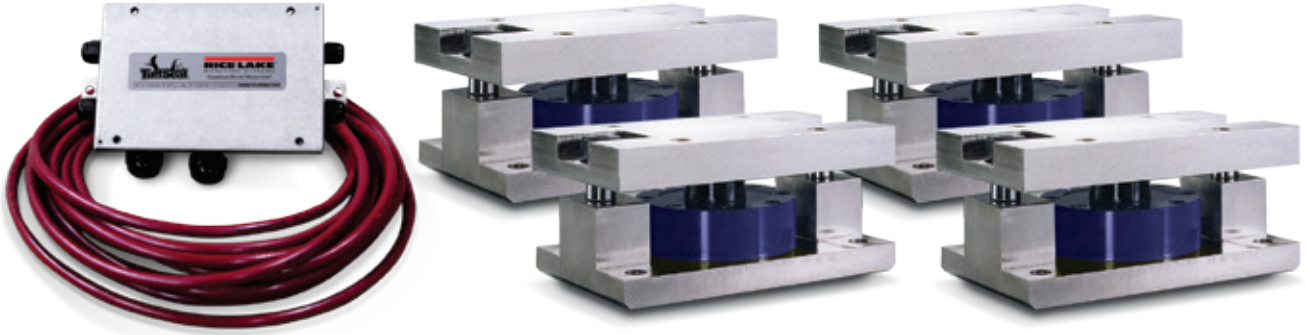


## RL2200 Series

Tank, Hopper and Vessel Weighing Assembly



Available in configurations with three or four mounting assemblies.  
Picture is a representation of actual product

The RL2200 Series mounts are ideal for use in tank, hopper, vessel and many other applications. The low-profile design allows for economical solutions in a competitive marketplace. This rugged, high-precision mount is designed for easy installation and does not require check rods or other stabilizing hardware. The RL2200 mount has the added feature of self centering, allowing for side loads without sacrificing performance.

### Load Cell Specifications

- Full Scale Output:**  
4.0 mV/V, 2.0 mV/V (2,500 lb)
- Bridge Resistance:**  
350 ohms nominal
- Material/Finish:**  
High-alloy steel, painted
- Safe Overload:**  
150% full scale
- Rated Excitation:**  
5-10 VDC (20 V maximum)
- Nonlinearity:**  
0.05% full scale
- Hysteresis:**  
0.03% full scale
- Temperature:**  
Compensated range:  
15° F to 115° F (-9° C to 46° C)
- Insulation Resistance:**  
5,000 megohms
- Seal Type:**  
Environmentally sealed
- Cable Length\*:**  
30 ft (9.1 m)
- Cable Color Code:**  
Red .....+ Excitation  
Black.....- Excitation  
White .....+ Signal  
Green .....- Signal
- Warranty:**  
Two-year limited warranty
- \*Compression load application

### Standard Features

- Capacities: 2,500 lb-50,000 lb (1,134 kg-22,680 kg)
- Low-profile design
- High 4 mV/V output (2 mV/V, 2,500 lb)
- Self-centering in all directions—able to withstand excessive side loads
- Self-checking assembly

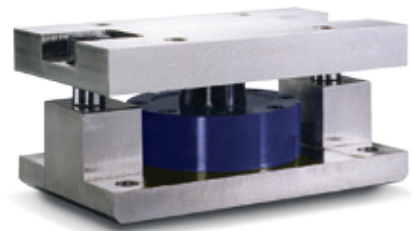
### Applications

- Tank, hopper or vessel weighing
- Belt or roller conveyors
- Scale platforms and screw feeders

### Complete Kit Includes

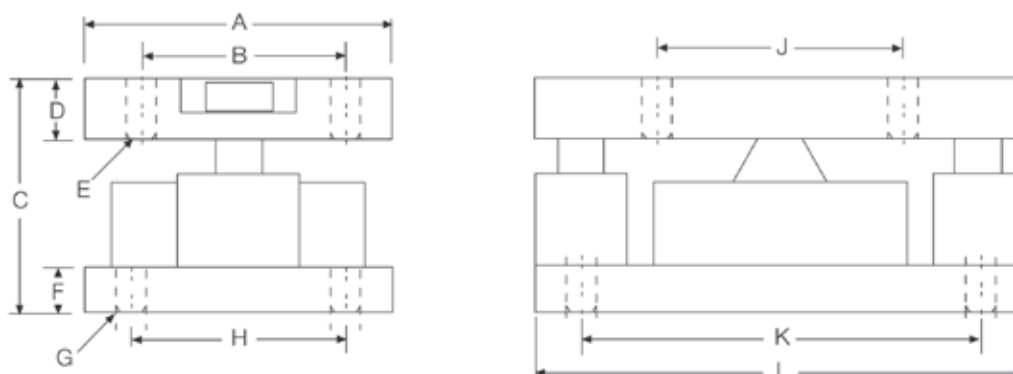
- 1 JB4SS NEMA Type 4X stainless steel signal trim junction box
- 3 or 4 RL2200 high-alloy, zinc-plated steel mounting assemblies
- 3 or 4 RL2200 compression disk load cells
- 25 ft of our hostile environment EL147HE SURVIVOR® load cell cable

Assembly with integral RL2200  
compression disk load cell.



# RL2200 Series

Tank, Hopper and Vessel Weighing Assembly



## Dimensions

RATED CAPACITY	A	B	C	D	E	F	G	H	J	K	L
<b>lb/inches</b>											
2,500-10,000	5.00	3.50	4.00	1.00	0.52	1.0	0.52	3.50	4.00	6.50	8.00
25,000-50,000	6.00	4.50	5.00	1.25	0.78	1.0	0.78	4.50	5.00	7.75	10.0
<b>kg/mm</b>											
1,134.0-4,536.0	127.0	88.9	101.6	25.4	13.2	19.0	13.2	88.9	101.6	165.1	203.2
11,340.0-22,679.6	152.4	114.3	127.0	31.7	19.8	25.4	19.8	114.3	127.0	196.8	254.0

## Order Information

LOAD RATING (PER MODULE)	PART #	PRICE
<b>Single Module</b>		
2,500 lb (1,134 kg)	76656	\$1,600.00
5,000 lb (2,268 kg)	45849	1,600.00
10,000 lb (4,536 kg)	45848	1,600.00
25,000 lb (11,340 kg)	45847	2,150.00
50,000 lb (22,680 kg)	45846	2,150.00
<b>3-Module Kit</b>		
2,500 lb (1,134 kg)	76897	4,775.00
5,000 lb (2,268 kg)	42811	4,775.00
10,000 lb (4,536 kg)	42812	4,775.00
25,000 lb (11,340 kg)	42813	6,175.00
50,000 lb (22,680 kg)	42814	6,175.00
<b>4-Module Kit</b>		
2,500 lb (1,134 kg)	76898	6,315.00
5,000 lb (2,268 kg)	42815	6,315.00
10,000 lb (4,536 kg)	42816	6,315.00
25,000 lb (11,340 kg)	42817	7,315.00
50,000 lb (22,680 kg)	42818	7,315.00

## Replacement Load Cell Order Information

LOAD RATING (PER MODULE)	PART #	PRICE
2,500 lb (1,134 kg)	76654	\$1,250.00
5,000 lb (2,268 kg)	45708	1,250.00
10,000 lb (4,536 kg)	45709	1,250.00
25,000 lb (11,340 kg)	45710	1,575.00
50,000 lb (22,680 kg)	45711	1,575.00