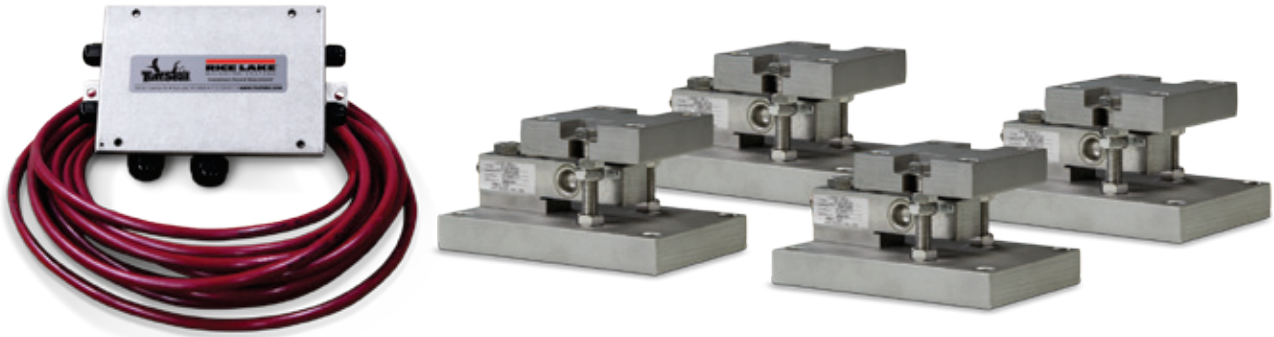


RTM

Stainless Steel Tank Weigh Modules, HBM



Picture is a representation of actual product

The HBM RTM weigh module assembly features a stainless steel, hermetically sealed, NTEP Certified THC load cell and a fully stainless mount including all associated hardware. Utilizing a rocker pin-loading concept, this design provides accurate weighing in the most adverse conditions. Standard features include both overload and overlift protection, making it ideal for most outdoor low-capacity tank and vessel weighing applications. Each HBM RTM module is provided standard with one load cell, 15 feet of cable, one mount and all associated hardware.

Load Cell Specifications

Full Scale Output:

2.0 (\pm 0.2) mV/V

Bridge Resistance:

350 ohms

Material/Finish:

Stainless steel

Temperature:

Compensated range
15°F to 104°F (-9°C to 40°C)

Safe Overload:

150% full scale

Safe Sideload:

100% full scale

Rated Excitation:

15VDC

Combined Error:

0.03% full scale

Insulation Resistance:

5,000 megohms

Seal Type:

Hermetically sealed, IP68

Cable Length:

15 ft (4.6 m)

Cable Color Code:

Green+ Excitation
Black- Excitation
White+ Signal
Red- Signal

Warranty:

One-year limited warranty

Standard Features

- Capacities: 500 lb-10,000 lb (226.8 kg-4536.0 kg)
- Stainless steel
- Overload and overlift protection
- Rocker pin loading
- Hermetically sealed
- Integral lateral stops
- 15 ft cable on load cell

Applications

- Lower capacity tank and vessel weighing
- Process control and batching

Complete Kit Includes

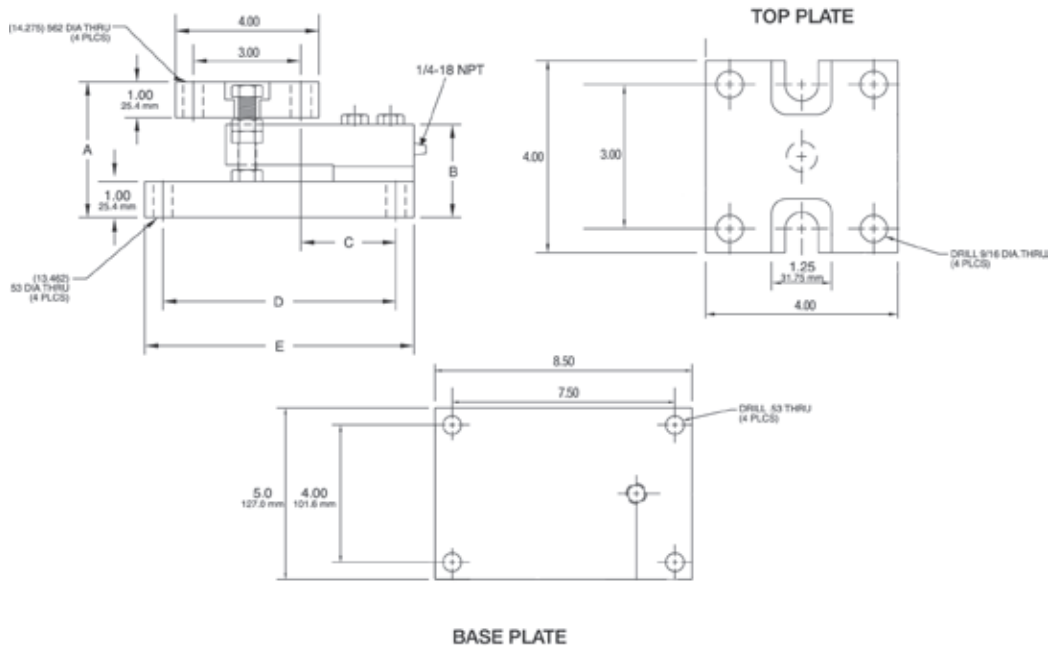
- 1 JB4SS NEMA Type 4X stainless steel signal trim junction box
- 3 or 4 HBM RTM stainless steel mounting assemblies
- 25 ft of our hostile environment EL147HE SURVIVOR® load cell cable

Load Cell Certifications



RTM

Stainless Steel Tank Weigh Modules, HBM



Dimensions

RATED CAPACITY	A	B	C	D	E
lb/inches					
500-2,500	3.78	2.59	2.65	6.50	7.50
5,000	4.03	2.83	2.65	6.50	7.50
10,000	4.28	3.08	3.65	7.50	8.50
kg/mm					
226.8-1,134.0	96.0	65.7	67.3	165.1	190.5
2,268.0	102.3	71.8	67.3	165.1	190.5
4,536.0	108.7	78.2	92.71	190.5	215.9

Order Information

LOAD RATING (PER MODULE)	PART #	PRICE
500 lb (226.8 kg)	170480	\$1,050.00
1,250 lb (567.0 kg)	170481	1,050.00
2,500 lb (1,134.0 kg)	170482	1,050.00
5,000 lb (2,268.0 kg)	170483	1,295.00
10,000 lb (4,536.0 kg)	170484	1,295.00
3-Module Kit		
500 lb (226.8 kg)	171157	3,260.00
1,250 lb (567.0 kg)	171158	3,260.00
2,500 lb (1,134.0 kg)	171159	3,260.00
5,000 lb (2,268.0 kg)	171160	3,995.00
10,000 lb (4,536.0 kg)	171161	3,995.00

Order Information

LOAD RATING	PART #	PRICE
4-Module Kit		
500 lb (226.8 kg)	171162	\$4,415.00
1,250 lb (567.0 kg)	171163	4,415.00
2,500 lb (1,134.0 kg)	171164	4,415.00
5,000 lb (2,268.0 kg)	171165	5,295.00
10,000 lb (4,536.0 kg)	171166	5,295.00