

**NR14-16N2S, NR14-20N2H, NR14-16N2HS, NR16N2,
NR16N2(H)C, NR20-25N2X, NRM20-25K**



HIGHER PRODUCTIVITY

REACH TRUCKS
1.4 - 2.5 TONNES



STRENGTH AND CLEAR VISION

The clever design of the poweRamic triplex free-lift mast and its backrest gives operators the best possible view of the fork tips and support legs, for smooth, precise, fast handling and pallet entry – with less chance of damage to loads and racking.

Its structure, with hydraulic cylinders incorporated into its profile, is both stronger and narrower than that of a conventional mast. As well as increasing visibility, the compact design has allowed enlargement of the operator compartment.

High mast strength and a stiffened chassis have helped to deliver class-leading capacity retention at full lifts, which now extend to an impressive 13 metres.

Advanced mast handling features, included in the Responsive Drive System (RDS) on the NR-N2 range, smooth out all reach movements and ensure rapid, accurate lifting, lowering, tilt and sideshift functions. Electronic damping also contributes to the mast's quiet, jerk-free performance. Meanwhile, the latest mast and reach carriage technology adds high stability and minimises sway.

Reduction and careful placement of hoses and cables aids vision and helps to avoid damage and leaks. Increased pump life and longer oil change intervals result from the mast design's enhanced heat conductivity, which assists in cooling the hydraulics.



DESIGNED AROUND YOUR OPERATOR

The ideal workspace

Effortless access to the wide, unobstructed, comfortable, protective cabin is aided by an intermediate step, ergonomic grab handles and a low seating position which also gives extra headroom.

The seat's backward/forward placement, backrest angle and suspension can be adjusted to suit operators of any size, shape or weight, ensuring comfort and concentration through long shifts. From this position all controls are within easy reach, while unsurpassed all-round visibility, from floor to maximum lift height, is possible thanks to the special design of the mast, fork carriage and overhead guard.

Fully adjustable controls

A totally redesigned adjustable armrest, combining anatomical support with free movement and perfect hand positioning, features spring-force-optimised fingertip hydraulic controls or – as an option – intuitive joystick control.

The steering wheel console can be angled horizontally up or down, through five steps, in a few seconds. It also slides in and out so that each operator can set the perfect position for use. With the aid of a steering knob, unlimited 360° turning is easy. The smooth, progressive steering system reduces in sensitivity as truck speed increases, to lower the chances of instability during sharp turns.

Instant information

The latest full-colour display panel gives clear information, in the operator's own language, and its functions are very simple to learn. By maintaining awareness of truck status and avoiding misuse, it protects your investment.

Features include a PIN code starter system (optional) giving access to as many as 30 operators and preventing unauthorised use. Travel speed, drive wheel direction, battery charge and other readouts can be seen clearly, without looking down, thanks to the angled screen.

The latest display panel, hydraulic control unit and steering console make operation easy, comfortable and precise. The spacious operator compartment (right) features a fully adjustable seat to meet each individual's needs.



DESIGNED AROUND YOUR OPERATOR

Ergonomic pedals

The shallow pedal angle allows the operator's heels to rest on the floor, avoiding strain in the ankles even over long shifts. For precise control, the accelerator and brake pedals allow passive and active regenerative braking, as well as emergency braking, and are programmable for speed of effect.

The 'dead man's pedal' is designed to prevent truck operation unless depressed by the weight of the left foot. It also serves to keep the operator's left leg safely within the truck. If you prefer, it can be programmed as a travel direction switch.

Storage spaces

Various convenient spaces have been designed to accommodate work equipment, paperwork and personal belongings.

Advanced controller

Our new-generation MicroCommand® controller is the beating heart of the NR-N2 range, playing a crucial role in optimising the driving experience, maximising efficiency and monitoring truck functions.

As well as governing PIN code access (optional), it can be used to programme the truck's features and performance to meet the exact needs of each application and operator. Up to 25 parameters can be changed by the service engineer, such as maximum drive and lift speeds, sideshift speed and lift height pre-selection.

Automatic safety

A number of added operator protection features, giving automated safety assistance, are built into the truck's design. They include the Responsive Drive System (RDS) with advanced mast handling, stability enhancement, mast sway minimisation and full programmability, or user-selected modes, to suit individual operators and tasks.

Travel speed is automatically reduced as the mast and forks rise. Curve control monitors both drive speed and lift height, and constantly adjusts the speed limit to avoid instability in tight turns. Progressive steering also adjusts according to speed to maintain stability. Automatic adjustment of drive speed, acceleration and traction ensures slip-free operation even on wet surfaces. Inbuilt battery rollers, fitted as standard, allow fast, easy, safe changes. With the optional battery changing device, changes can be made without moving the truck.

Accessories

Optional extras for the compartment include:

- Cooling fans
- Audio system, incl. speakers, amplifier, AUX 3.5 mm jack connector
- Working lights
- Reading lamp
- Seat belt
- Seat heating (only on high performance chair)
- Rear-view mirror
- Fork camera with 7" colour display mounted on the overhead guard



- 1 Auxiliary buttons
- 2 Start key switch
- 3 PIN pad and menu selection keys
- 4 Display
- 5 Emergency stop
- 6 Sideshift lever
- 7 Fork tilt lever
- 8 Reach movement lever
- 9 Lift and lowering lever
- 10 Lift preset height selector
- 11 Drive direction switch
- 12 Horn

A CHASSIS FOR EVERY SITUATION...

There are eleven N2 generation models to choose from, in a variety of configurations including high performance, compact and straddle versions. You are sure to find one that is perfect for your application, load and pallet type.

The chassis is stiffened, in all cases, to maximise stability and residual capacity. Standard size is 1,270 mm wide, but there is also a large chassis for the heavy duty **NR25N2X** (1,440 mm) and a smaller one for the compact **NR16N2C** and **NR16N2HC** (1,100 mm).

Our space-saving straddle models allow pallets of 1,000 mm width to be retracted within the load legs. For drive-in racking applications the compact models are ideal, thanks largely to a narrow overhead guard which enables them to operate between the first level beams.

When handling long loads in narrow aisles, the multi-way reach trucks **NRM20K** and **NRM25K** offer the ultimate in warehouse flexibility. The amazing mobility made possible by their four-wheel steering system, with forward, backward, sideways, parallel and rotational movement, is far superior to that of a four-way truck.

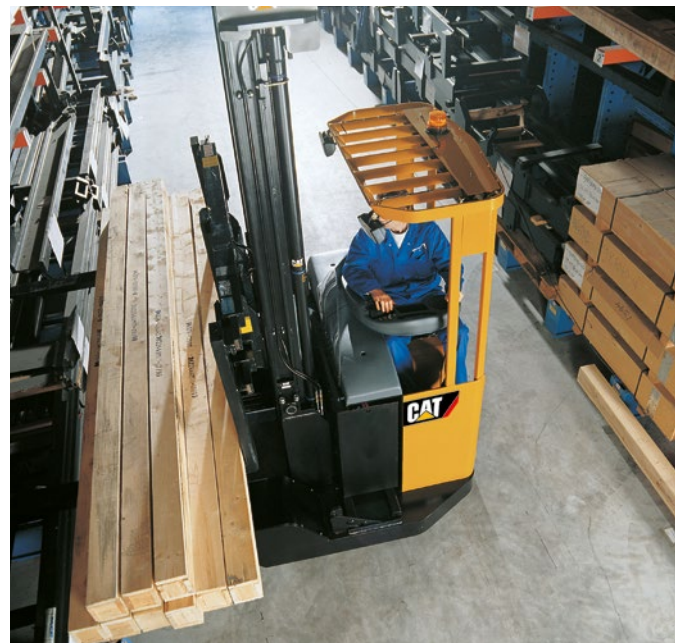
Right, top: Shown side by side, NR20N2X on left and NR16N2S on right.

Right, bottom: The multi-way reach trucks are designed for handling long loads.



CHASSIS WIDTHS

MODEL	CAPACITY (tonnes)	CHASSIS WIDTH (mm)
NR14N2S	1.4	1270
NR14N2HS	1.4	1270
NR16N2S	1.6	1270
NR16N2HS	1.6	1270
NR16N2	1.6	1270
NR16N2H	1.6	1270
NR16N2C	1.6	1100
NR16N2HC	1.6	1100
NR20N2H	2.0	1270
NR20N2X	2.0	1440
NR25N2X	2.5	1440
NRM20K	2.0	1700
NRM25K	2.5	1700



...AND OPTIONS TO MEET EVERY NEED

For extreme temperatures

Our factory-fitted cabin with heating and other cold store modifications keeps operators comfortable during long shifts in freezing conditions (see page 12). Heated windows prevent condensation when the truck leaves the cold store. In hot environments (up to and exceeding 40°C), extra cooling fans and special oil prevent leaks and maintain truck performance.

For the ultimate in stacking efficiency

Our latest pre-set height selector is easier to use than any other on the market, so stacking is faster and safer than ever.

OPTIONAL FEATURES INCLUDE

- Seat with mechanical or air suspension
- Special chassis colour
- Custom-designed or special RAL colour side covers
- Audio system with audio input 3.5 mm jack
- Options bar
- Rear-view mirror
- List bracket
- PC support
- Overhead guard with mesh or Plexiglas
- Easy-use pre-set height selector
- Extra hydraulic valve and hosing to fork carriage
- Fork positioner
- Fork-mounted camera with monitor
- Telescopic forks
- Sideshift and tilt function centring
- Load weight scale
- Current output 12V/4.4A and USB 5V power supply for mobile charge
- Alarm for driving, lifting and lowering
- Battery changing device and quick battery locking system
- Cold store modification
- Cold store cabin*
- High-temperature modification

* Fitting of the cold store cabin requires MODCS - Cold store modification. Cold store cabin not available for compact 'C' models.



Stacking can be made even faster and safer with our easy-to-use pre-set height selector.

ADAPTABLE TO THE HARSHTEST CONDITIONS

High visibility through a crash proof polycarbonate roof window, which doubles as an emergency exit

Electrically heated windows to prevent misting and condensation

Outwardly curved door profile maximises interior space

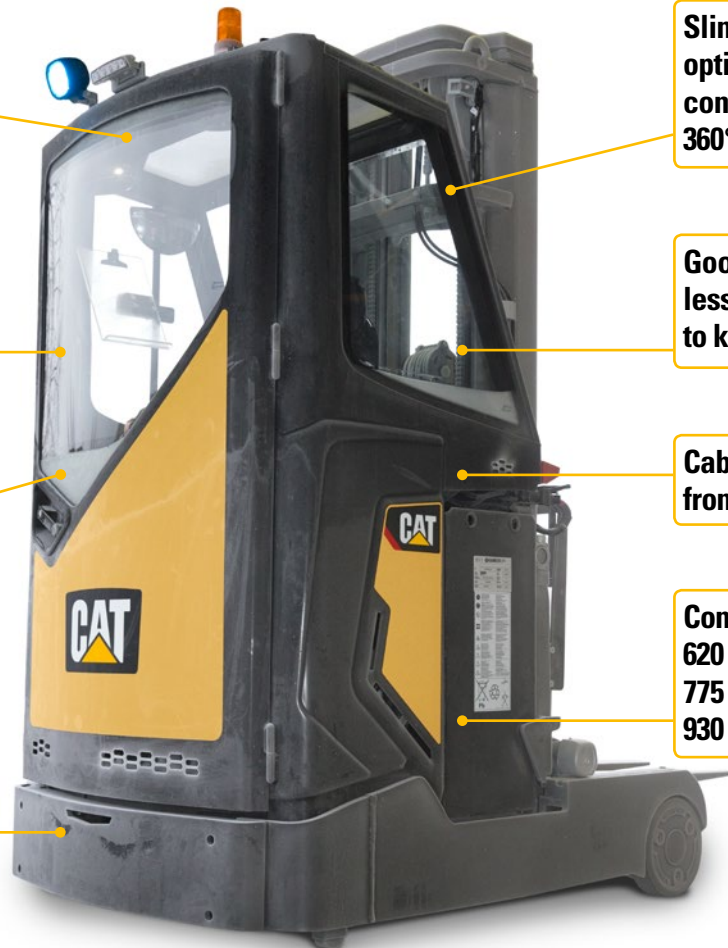
Steel collision guard gives added protection - particularly to the door

Slim beam profile and optimised glass area contributes to excellent 360° visibility

Good insulation means less energy is required to keep the cabin warm

Cabin is insulated from vibration

Compatible batteries:
620 Ah
775 Ah
930 Ah



When equipped with both the cabin and the necessary cold store modification (MODCS), a Reach Truck can operate dependably in freezing temperatures as low as -35°C .

Visibility

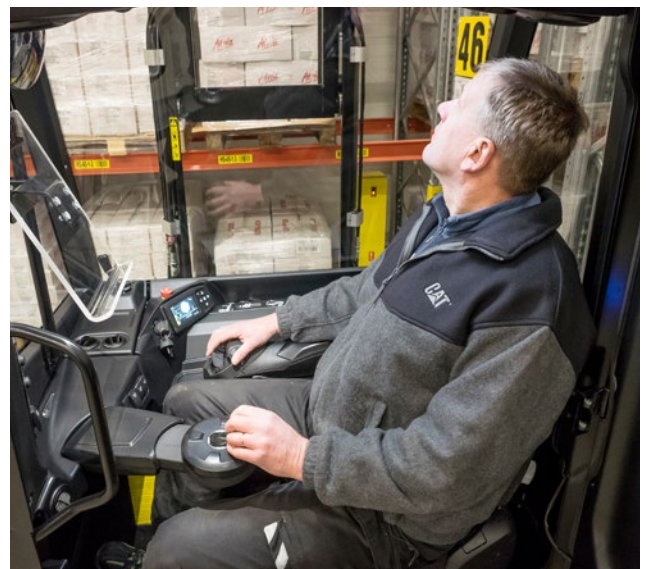
The cabin design gives operators a secure and comfortable environment in which to work with excellent all-round visibility thanks to its optimised glass area.

Efficient heating

The temperature-controlled heating system has an adjustable blower speed and directional nozzles. In cold conditions, it pre-heats fresh air from outside using heat from the truck's control systems that would otherwise be lost. Special care has gone into thoroughly insulating the cabin. Excellent insulation means that less energy is required to heat the interior which helps optimise overall power consumption.

Options

- Roof wiper
- Heated seat
- Intercom system



The spacious interior is a comfortable 'office' for operators and offers excellent visibility.