

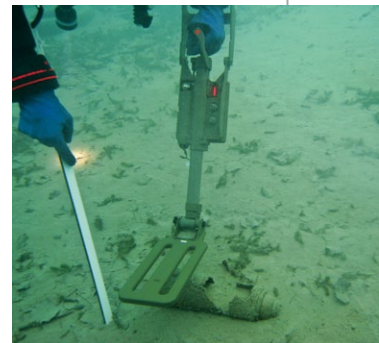
CEIA CMD/DW



ALL TERRAIN AND DEEP WATER COMPACT METAL DETECTOR

FEATURE HIGHLIGHTS

- › Certified in deep water down to 330 ft
- › Detection Capabilities for all metal and minimum-metal content targets
- › Balanced, Compact, Lightweight design
- › One Piece Retractable design
- › Accurate pin-pointing of the target's position indicated by:
 - acoustic modulation
 - maskable led display
- › High discrimination capability for adjacent targets
- › Automatic Compensation for mineralized and high natural metal content soil
- › Operation monitored by a microcomputer-controlled autodiagnostic system
- › Integrated battery charger
- › Long-Lasting battery life
- › Extremely high level of electrical and mechanical reliability
- › Completely digital electronics, with in-field program memory upgrade capability
- › Ease of operation with minimum training time required



The CEIA CMD/DW is a very high performance, high sensitivity Compact Metal Detector certified to detect metal and minimum-metal content targets from ground to fresh or salt water bodies down to 330 ft depth



ONE-PIECE FOLDABLE DESIGN

The Metal Detector consists of a search head, a control unit, a telescopic pole and an elbow support jointed together in a one-piece design. The detection head is light and the wiring is designed to be protected from any possible damage.

The one-piece foldable design allows the CEIA CMD/DW Metal Detector to be **deployed in a very short period and to be easily transported.**

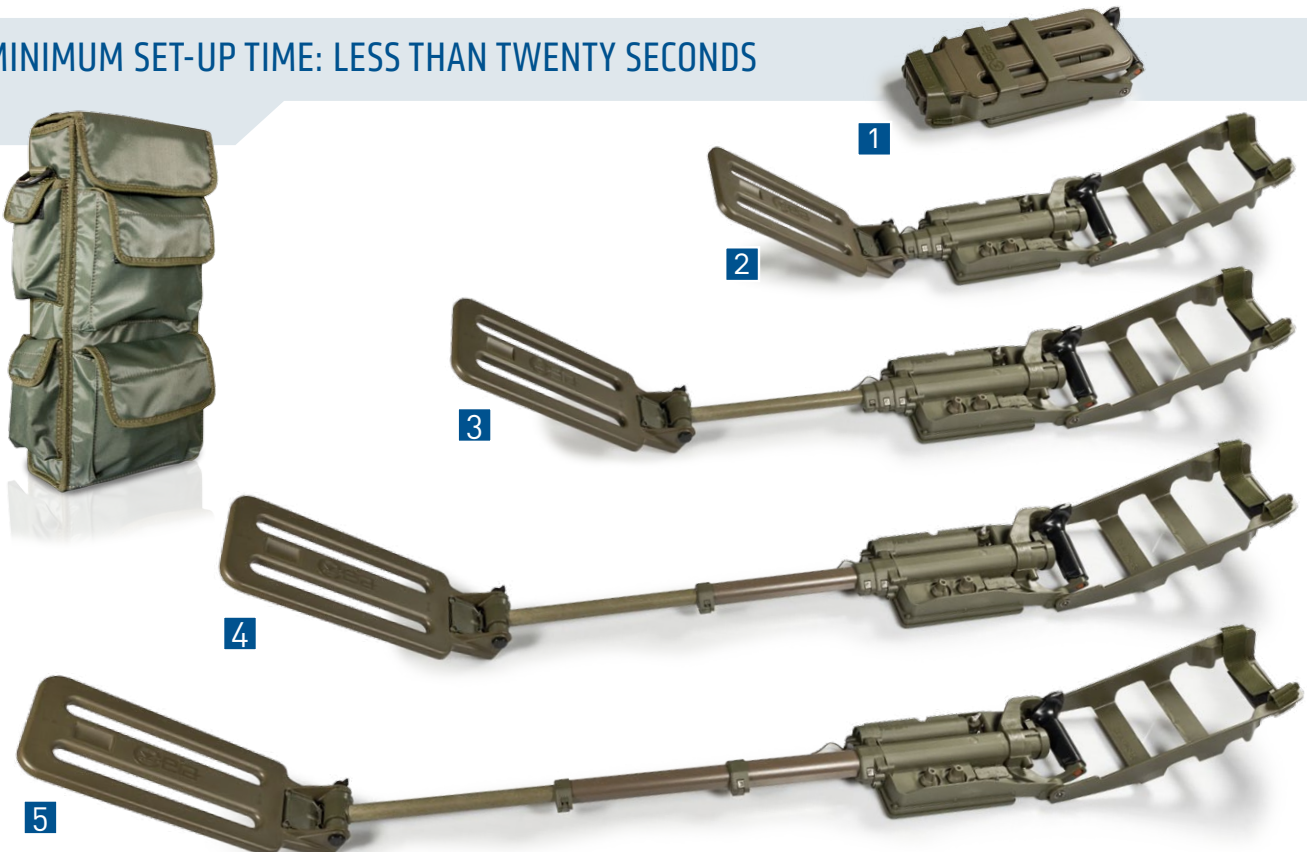
The detector is equipped with a **built-in Ni-MH battery charger** which allows the batteries to be recharged (3 hours. max) without the need to extract them. This also allows full environmental protection of the power source and minimum preparation time for the user.

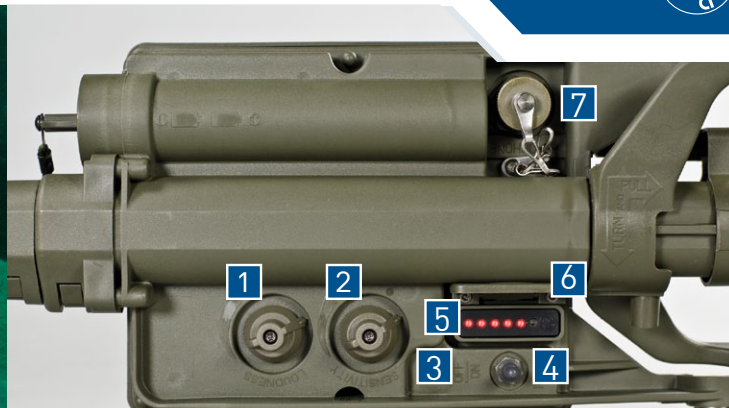
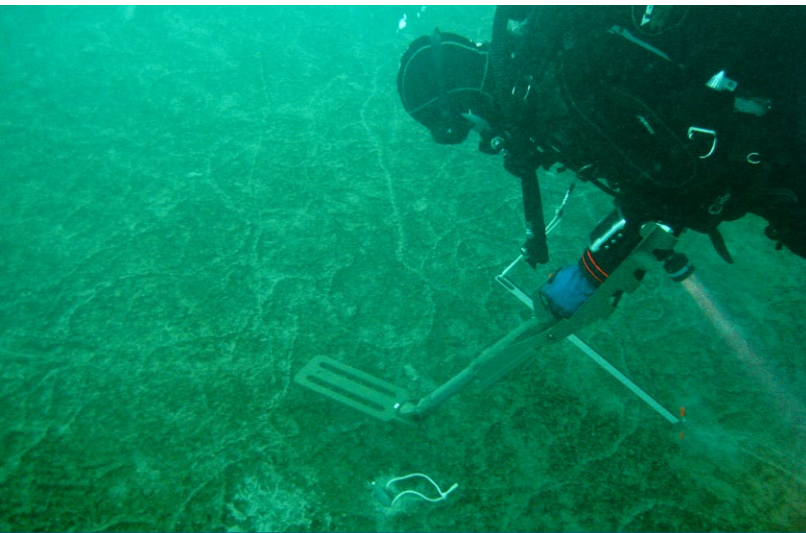
ERGONOMIC OPERATION

Intentionally designed to be **used easily and comfortably in all working conditions**, the CEIA CMD/DW can be operational in less than twenty seconds.

The Metal Detector offers **the best combination of functional and operational characteristics.** More specifically, it provides the highest ratio between overall dimensions, detection depth and operational weight. The length of the telescopic pole can be adjusted for operation **in upright, kneeling, prone and swimming positions.**

MINIMUM SET-UP TIME: LESS THAN TWENTY SECONDS





EXCLUSIVE AUTOMATIC SOIL COMPENSATION SYSTEM

The CEIA CMD/DW **does not require any manual calibration**; in addition, optimum sensitivity is ensured over all types of terrain due to CEIA's Exclusive Automatic Soil Compensation System.

Localization of metal objects is optimized by an **Acoustic Modulation pinpointing system** aided by a Visual LED bar graph, which allows the position of the detected mass to be identified accurately.

If desired, the led bar can be masked with a snap-down cover so as to avoid remote visibility (stealth operation).

MODERN CONTROL UNIT

The watertight control unit withstands the most stringent environmental requirements and Standards.

All controls are within easy reach of the operator:

- 1 Volume adjustment
- 2 Sensitivity adjustment
- 3 Built-in speaker
- 4 Main switch and spring actuated reset switch
- 5 Luminous bar indicator of signal intensity
- 6 Snap-down cover to mask the led bar indicator
- 7 Headphone connector - RS-232 interface

ACCESSORIES

GSMD-FPK FIELD PROGRAMMING KEY

- Direct connection to the Headphone control unit connector
- Requires no external power source
- Device Updating time: ~ 3 min
- Unique design
- Very easy to use
- Most compact and rugged programming unit available
- Waterproof and reliable. No maintenance required
- Complete and accurate reprogramming of program memory and operational parameters
- Verifies automatically equipment model and compatibility

GSMD-TPS TEST PIECES SET

The Training Set includes various reference samples, **designed to test the detection of samples at different depths**. It is a versatile training tool for different detection techniques, and is also suitable for testing various metal detectors. The kit is supplied complete with Certification of Conformity to the Primary Reference Sample.





CEIA CMD/DW

The detector is manufactured in compliance with the ISO-9001 standard and has been designed to satisfy the most stringent operational detection requirements

COMPOSITION OF THE CMD/DW DETECTING SET

1	<p>TRANSPORT CASE Composition: Ultra High Impact Polyethylene, HD 35 kg/mq</p>	
2	<p>CARRY BAG Carry bag in water resistant synthetic canvas (for land use)</p>	
3	<p>CEIA CMD/DW METAL DETECTOR</p>	
4	<p>HEADPHONE</p>	
5	<p>HOOK/CLIP FOR ATTACHING HEADPHONE TO CLOTHING</p>	
6	<p>INSTRUCTION MANUALS</p>	
7	<p>BATTERIES</p>	
8	<p>TEST PIECE</p>	
9	<p>EXTERNAL SPEAKER (for land use)</p>	

TECHNICAL DATA

POWER SUPPLY	Types of batteries (2x), ANSI Standard, type C	1.5V Alkaline (LR14) 1.2V Ni-MH rechargeable
BATTERY LIFE	Battery life at 20°C (default search program): - with alkaline batteries: 6 hours - with Ni-MH (6000 mAh) rechargeable batteries: 8 hours	Battery status indicator
METAL ALARM	Adjustable sensitivity	Audible alarm with adjustable volume and visual LED display (maskable with a snap-down cover)
	External loudspeaker	land use
DIMENSIONS	Search head: 13.78" x 5.51" Folded: 15.24" x 6.18" Fully extended: 50.80" Carry bag: 15.55" x 7.87" x 4.33" Transport case: 18.7" x 13.8" x 6.9"	
WEIGHT	Metal Detector (with batteries) Carry bag Transport case Headphone CMD/DW Detecting Set	1.76 lbs under water 6.06 lbs on land 1.19 lbs 8.8 lbs 0.37 lbs 15.50 lbs
ENVIRONMENTAL	Storage temperature Operational temperature Diving depth	-67 °F to +185 °F -50.8 °F to +158 °F (land) from freezing to +158 °F (under water) down to 330 ft 10 bar
		Certified in deep water down to 330 ft Meeting and exceeding the relevant environmental Standards
SET-UP TIME		Twenty seconds typical (batteries already in place)
OPTIONS/ ACCESSORIES (for land use)		90-260V~ power supply adapter for the built-in battery charger 12/24Vdc power supply cable for the built-in battery charger fitted with a car cigarette lighter plug



CEIA USA Ltd - 9155 Dutton Drive, Twinsburg OHIO - 44087 USA
Phone: 330-405 3190 - Fax 330-405 3196 - Call 1-888-532-CEIA

© 2013 CEIA USA, Ltd. All rights reserved. CEIA USA reserves the right to make changes, at any moment and without notice, to the models (including programming), their accessories and options, to the prices and conditions of sale

DP170K00006V100005