

Assured Identity for OEMs and Integrators

TRU Series

Biometric Physical Access Control

The TRU Series of biometric access control devices provides a superior solution. Pin numbers and key cards are often shared, lost, or stolen resulting in compromised security. The TRU biometric access control series grants access based on the most accurate form of identification, your fingerprint. All IB products use our patented LES Technology providing the most reliable biometric on the market.

LES technology

Our patented "Light Emitting Sensor" technology surpasses both the security and usability of silicon, optical, and other technology based scanners.

- > **Durable:** able to withstand the toughest conditions with minimal maintenance or damage due to scratching or contaminates
- > **Accurate:** provides accurate high-resolution fingerprint scans in virtually any environment: indirect or direct sunlight, a factory, etc.
- > **Efficient:** LES fingerprint sensor is not easily confused by foreign matter

Features

- > 1:n solution processing over 30,000 enrollments per second enabling immediate access
- > Modern server/client architecture secured with 128-bit encryption
- > POE (Power Over Ethernet)
- > OSDP capable; protocol powered by Mercury system panels
- > Real time control and monitoring of system activity
- > National Biometric Security Project's Qualified Product List
- > Wiegand Output
- > 2000 template storage capacity during offline mode
- > Memory and processing stored on TRU when network is down

Benefits

- > Live finger sensor
- > Audit trail is available through IB's full featured enrollment and management software
- > Lower cost than token based systems
- > Alarm finger designation
- > Free form placement accommodates any age/finger size
- > 1 year hardware warranty – extended warranty available upon request
- > Works in direct light



TRU Series

- > **TRU 550:** Biometric Only
- > **TRU 650:** Biometric Fingerprint Reader + Integrated Proximity Card Reader (or Mifare option)
- > **TRU 750:** Biometric Fingerprint Reader and Integrated iClass Card Reader

System Components

- > **TRU 550 Terminal Reader Unit**
(Biometric Fingerprint Reader Only)
- > **TRU 650 Terminal Reader Unit**
(Biometric Fingerprint Reader + Integrated Prox Card Reader, 125KHz)
- > **TRU 750 Terminal Reader Unit**
(Biometric Fingerprint Reader + Integrated iClass Card Reader)
- > RJ45 Port for TCP/IP
- > 12 Volt DC 750 Milliamp Supply
- > RS-422 Communication In/Out
(to Optional Power & Door Control Box)
- > 26 & 37 bit Wiegand Out (to existing ACS Systems)
- > -10°C to 50°C (14°F to 122°F) Operational Temperature
- > Single Gang Box Mount Bracket
- > Wiring Harness

System Server Application Features

- > Installation on Separate PC/Server from E&M App

System Features and Requirements

- > Import and Export Feature for User(s) Info
- > Windows Interface: Drag & Drop, Right Click, Icon Based
- > Real Time System Control, Monitoring & Reporting
- > Multiple Access Group / Access Time Zone Capability
- > Optional Fingerprint Image Storage for Failed/Success Events
- > Duress Alarm Finger Functionality
- > System Activity Report Generation & Search Functions
- > Enroll & Mgt of ID Cards
- > TRU Terminal Firmware Remote Updating
- > POE (Power Over Ethernet)
- > OSDP Communication

System Requirements

Workstation Requirements for Enrollment & Mgt Software:

- > USB Port 1.1/2.0
- > Pentium III Processor 600 Mhz Minimum
- > Supported Operating Systems
 - Windows XP Pro
 - Windows 2000
 - Windows 2000/2003 Server
 - Windows Vista
 - Windows 7
- > Minimum Hardware Requirements (Server Application)
 - Pentium IV Processor or Equivalent
 - 10 MB Avail Hard Disk Space
 - USB Port 1.1/2.0
 - 250 MB RAM

System Software: BACS

- > User Enrollment & Management Application
- > System Server Windows Service Application
- > Hardware & Software Installation Manuals

USB Fingerprint Enrollment Scanner

- > User enrollment device

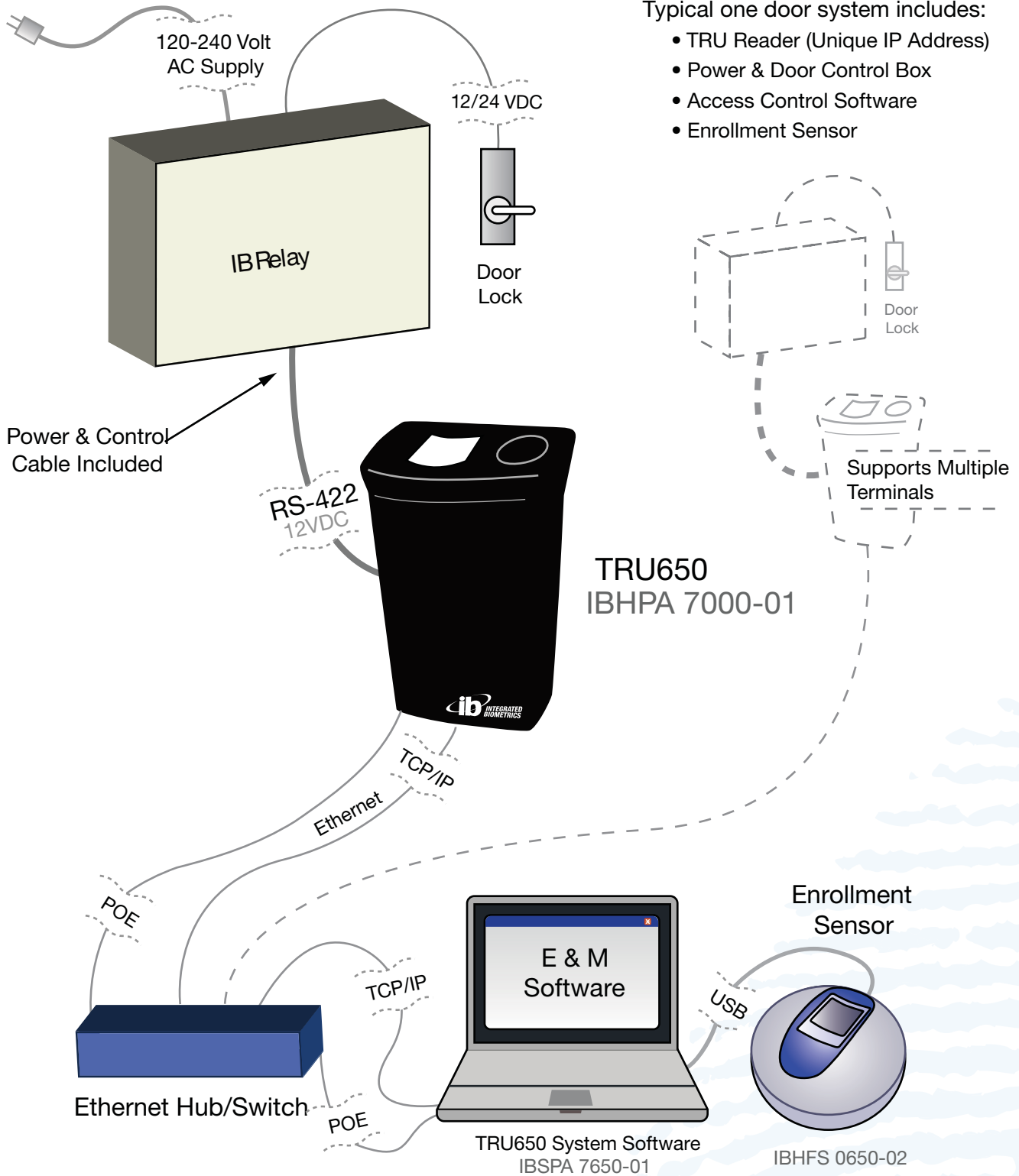


Power & Control Box (Optional) for Standalone Application

- > Power Board
 - 120-240 Volts AC Supply
 - RS-422 Communication In/Out
 - 12 VDC 1 amp Out / 24 VDC .7 amp Out
- > Door Control Board
 - Normally Open Contact (Dry or 12/24 VDC, configurable)
 - Normally Closed Contact (Dry or 12/24 VDC, configurable)
 - Door Open Sensor In
 - Egress Switch On
- > Dimensions
 - 7.75 in (length) x 5.75 in (width) x 4 in (depth)

Supported Databases

- > ODBC Compliant
- > Microsoft SQL2005 Server Express/
SQL Server 2008 Express
- > Microsoft MS SQL Server/MS SQL Server 2005/
MS SQL Server 2008
- > Oracle
- > Other Databases on Request



Typical one door system includes:

- TRU Reader (Unique IP Address)
- Power & Door Control Box
- Access Control Software
- Enrollment Sensor

Typical one door system includes:

- TRU Reader (Unique IP Address)
- Enrollment & Management Software
- Enrollment Sensor

