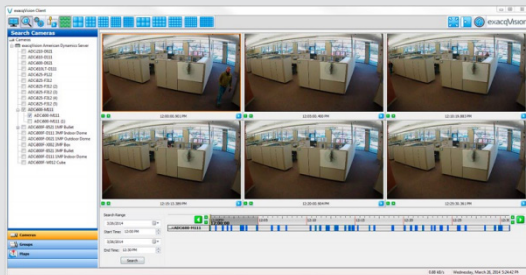
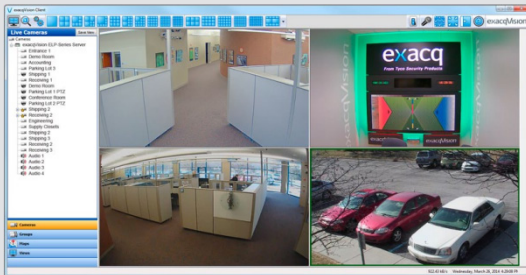


exacpVision ELP-Series Hybrid Server Complete Network Video Recording Solution



Free Exacq Mobile app

Up to 40 Cameras Per Server

- Continuously record up to 200 Mbps of video, audio and data
- Available with 8 or 16 analog inputs
- Includes 4 IP camera licenses, expandable to 24 per server
- Compatible with thousands of IP cameras

Unlimited Scalability

- Add unlimited servers for greater capacity or dispersed geographic location
- Easily expand license to record additional high definition IP cameras
- Easily manage multiple NVRs from a single, unified client

High Reliability

- Store up to 12 TB storage per server using continuous duty enterprise-class hard drives
- Linux operating system pre-installed on a solid-state drive
- Monitor hardware status with the freely distributed exacqVision client

Powerful exacqVision Professional VMS Software

- Monitor video, audio and data in real time
 - Customizable full-screen video wall
 - Two-way audio
 - Interactive camera maps
 - Data integration from retail systems, access control and more
 - Onscreen display of motion, analytics and alarm events with configurable response
- Conduct Investigations on recorded video, audio and data
 - Search across multiple video and archive servers seamlessly
 - Powerful thumbnail and timeline search tools
 - Export video in open-standard video formats or as a self-contained player with tamper protection

View Video From Anywhere

- Pre-loaded with exacqVision VMS software for immediate use
- View video and manage servers on multiple
- View live and recorded video on any browser, iOS, Android or Windows Phone 8 mobile device

3-Year Hardware Warranty and Software Subscription Agreement (SSA)

- 3-year hardware warranty and SSA included.
- Update client and server software with the latest exacqVision software features at no additional cost during the 3-year SSA period.

ANALOG SETTINGS		ELP	ELPR
Inputs		8/16	8/16
Compression		H.264, MJPEG	H.264, MJPEG
Frame Rate		240/480 (NTSC) 200/400 (PAL)	240/480 (NTSC) 200/400 (PAL)
Alarm Inputs		4 TTL	4 TTL
Alarm Outputs		2 TTL & 1 Relay	2 TTL & 1 Relay
Analog Outputs		1	1
Audio Inputs		4	4
Serial (RS485)		1	1
IP		ELP	ELPR
Maximum IP Cameras		24	24
Included IP Licenses		4	4
Pre-Loaded VMS Software		Professional (standard), Enterprise (optional)	Professional (standard), Enterprise (optional)
Typical Video Storage Rate (Mbps)		200 Mbps	200 Mbps
Local Client Display Rate (FPS)		270 FPS	270 FPS
Maximum Hard Drives		1	2 removeable
Maximum Storage		6 TB	12 TB
Monitor Output		1 DVI-I + 1 HDMI+ 1 DisplayPort, max 2 simluatenous monitors	1 DVI-I + 1 HDMI + 1 DisplayPort, max 2 simluatenous monitors
Operating System		Ubuntu Linux 12.04	Ubuntu Linux 12.04
Operating System Drive		30 GB SSD	30 GB SSD
CPU		Intel Celeron	Intel Celeron
RAM		2 GB	2 GB
NIC		2 x 1 Gbps	2 x 1 Gbps
USB		6 x USB 2.0, 2 x USB 3.0	6 x USB 2.0, 2 x USB 3.0
DVD		Included	Optional
PC Audio Outputs		1	1
Keyboard & Mouse		Included	Included
GENERAL		ELP	ELPR
Dimensions		18.9" x 17" x 2.5" 48 x 43.2 x 6.5 cm	18.9" x 17" x 2.5" 48 x 43.2 x 6.5 cm
Weight		22 - 25 lbs. 10 - 11.3 kg	22 - 25 lbs. 10 - 11.3 kg
Regulatory		CE, FCC, cULus, UL Listed	CE, FCC, cULus, UL Listed
Input Voltage		120/240 VAC auto-sensing	
Power & Heat		130 Watts/460 BTU/h (max) 100 Watts/350 BTU/h (typical)	130 Watts/460 BTU/h (max) 100 Watts/350 BTU/h (typical)
Power Supply		Single	Single
Operating Temperature		40° - 95° F	4.5° - 35° C
Warranty		3 years, parts & labor, 3 years SSA included	

Related Products



exacqVision VMS Software

Approvals



www.exacq.com