

2016
PRODUCT
CATALOG

Northern[★]

The Security Professional's Choice For Video Surveillance Products



Northern[★]

3625 Cincinnati Avenue, Rocklin, CA 95765 ♦ 855-388-7422 ♦ www.northernvideo.com

TVIPTZ30XIR

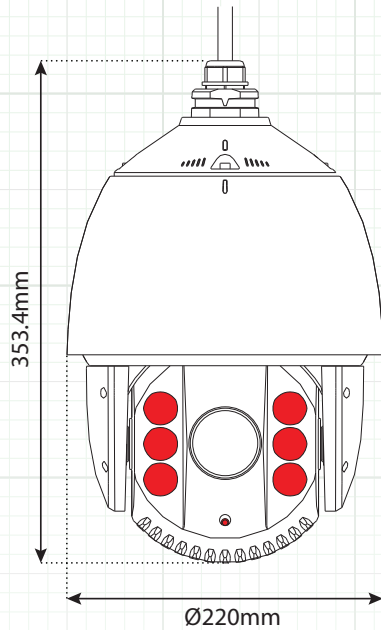
HD-TVI Full HD 1080p PTZ with 30X Zoom & 395' IR

Full HD 1080p, True D/N, DWDR, 3DNR, UL/CUL



HD-TVI
1080p

TVIPTZ30XIR



Dimensions

FEATURES

- ◆ 1/3" 2MP CMOS Sensor
- ◆ Full HD 1080P Resolution
- ◆ 30X (4~120mm) Optical Zoom Level
- ◆ Digital Wide Dynamic Range
- ◆ UTC & RS485 Controllable
- ◆ Included 24VAC Power Supply
- ◆ 360° Endless Panning
- ◆ True D/N Mechanical IR Cut Filter
- ◆ 6 High Power IR LED's / 395' IR Range
- ◆ 8 Programmable Privacy Masks
- ◆ 256 Preset Positions
- ◆ 8 Patrols With up to 32 Presets Each
- ◆ Pelco P & D Protocols
- ◆ IP66 Weatherproof
- ◆ Built in Heater & Fan
- ◆ -22°F Operating Temperature
- ◆ UL/CUL Certified

INCLUDED ACCESSORIES

1. Quick Guide
1. Software CD
1. L-Style Wrench
1. 1½" Pipe Thread Adapter (Male)
1. 24 Volt AC Power Supply

MOUNTING ACCESSORIES

IPTVIWMT
Wall mount for
IPPTZ30XIR



IPTVIJB
Junction Box for
IPTVIWMT



TVIPTZ30XIR Specifications

	SPECIFICATION	TVIPTZ30XIR
Camera	Image Sensor	1/3" CMOS
	Image Resolution	2 Megapixel, 1920x1080 Max
	Frame Rate	50Hz:25fps(1920x1080) / 60Hz:30fps(1920x1080)
	Min. Illumination	Color: 0.02 Lux@(F1.6,AGC ON) B/W: 0.002 Lux@(F1.6,AGC ON) / 0 Lux with IR
	White Balance	Auto / Manual / ATW / Indoor / Outdoor
	AGC	Auto / Manual
	S/N Ratio	≥ 50dB
	3D DNR	Support
	Backlight Compensation	Support
	WDR	Digital WDR
	Shutter Time	PAL: 1-1/10,000s / NTSC: 1-1/10,000s
	True Day & Night	IR Cut Filter
	Digital Zoom	16x
	Privacy Mask	8 Programmable Privacy Masks
	Focus Mode	Auto / Semiautomatic / Manual
Focus Mode	Auto / Semiautomatic / Manual	
Lens	Focal Length	4-120mm, 30X
	Zoom Speed	Approx.3.0s(Optical Wide-Tele)
	Angle of View	58-1.7 degree(Wide-Tele)
	Min. Working Distance	10-1500mm (Wide-Tele)
	Aperture	F1.6~F4.4
Pan & Tilt	Pan Range	360° endless
	Pan Speed	Pan Manual Speed: 0.1°-160°/s, Pan Preset Speed: 240°/s
	Tilt Range	-15°-90° (Auto Flip)
	Tilt Speed	Tilt Manual Speed: 0.1°-120°/s, Tilt Preset Speed: 200°/s
	Proportional Zoom	Rotation Speed Adjusted Automatically According to Zoom
	Number of Preset	256
	Patrol	8 Patrols, up to 32 Presets per Patrol
	Pattern	4 Patterns, with the Total Recording Time not Less than 10 minutes
	Power-off Memory	Support
	Park Action	Preset / Patrol / Pattern / Pan Scan / Tilt Scan / Frame Scan / Random Scan / Panorama Scan
	Scheduled Task	Preset / Patrol / Pattern / Pan Scan / Tilt Scan / Frame Scan / Random Scan / Panorama Scan
	PTZ Position Display	On / Off
	Preset Freezing	Support
	RS-485 comm.Diagnosis	Support
	IR	IR Distance
IR Intensity		Automatically Adjusted, Depending on the Zoom Ratio
Input / Output	Video Output	1 BNC HD-TVI 1080p Output
	RS-485 Interface	Half-Duplex, Self-adaptive HIKVISION, Pelco-P, Pelco-D Protocol
	UTC Function	HIKVISION_C (*Need UTC Controller if DVR Does not Support UTC Function)
General	Menu Language	English, Chinese
	Power	24VAC Max. 30W(IR: 9W, Heater: 6W)
	OperatingTemperature	-30°C-65°C(-22°F-149°F) - Humidity '90% or less
	Protection Level	IP66 - TVS 4,000V Lightning, Surge and Voltage Transient Protection
	Dimensions	Ø220x353.4mm (Ø8.66"x13.91")
	Weight (approx.)	4.5kg(9.92 lbs)

Note: Specification subject to change without notice

DWMIR960 / DWMIRW960

**Fixed
3.6mm
Lens**

700 Line Outdoor **IR** Dome Cameras w/OSD

Sony 960H Chip, D-WDR, OSD, DNR, 60' IR Range, 3.6mm Lens



DWMIR960

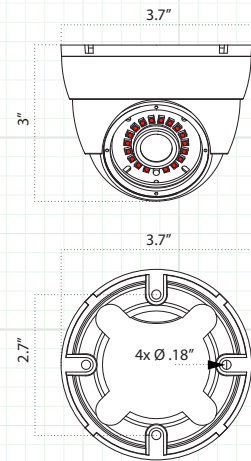


DWMIRW960

← Mounting Base
← Locking Collar



In-Line
Cable Mounted
OSD Control



Dimensions

SPECIFICATION	DWMIR960	DWMIRW960
Imaging Device	960H 1/3" SONY Super HAD II CCD	
Resolution	700 TV Lines	
Minimum Illumination	0.0 Lux (IR LED On)	
Lens Size	3.6mm Fixed Focal Lens	
IR LED Range / IR LED Count	60 Feet / 18 Pieces	
IR LED Wavelength	850nm	
Maximum Aperture	F2.0	
S/N Ratio	More than 52db	
Electronic Shutter Speed	AUTO, FLK, 1-60 ~ 1/100,000	
OSD (On Screen Display)	Yes (Cable Mounted Control)	
BLC (Backlight Compensation)	OFF / BLC / HBLC	
AGC Automatic Gain Control	AUTO / MANUAL	
White Balance	ATW, MANUAL, USER 1, USER 2	
Day-Night	COLOR / BW / AUTO / EXT 1 / EXT 2	
DNR (Digital Noise Reduction)	ON / OFF	
D-WDR (Digital Wide Dynamic Range)	ON / OFF / LUMINANCE / CONTRAST	
Motion Detection	ON / OFF 4 - Zones Programmable	
Privacy Masking	ON / OFF 8 - Zones Programmable	
Sharpness	(Adjustable 0~255)	
TV System	NTSC	
Effective Pixels	976 (H) X 495 (V)	
Scanning System	2:1 Interlaced	
Sync System	Internal Negative Sync	
Video Output	1.0Vp-p 75 OHM Composite BNC	
Gamma Characteristics	0.45	
Power Requirement / Consumption	12 Volt DC / 200mA	
Operating Temperature	-14°F ~ 122°F	
Weight	.75lb	
Housing / Color	Aluminum (Gray)	Aluminum (White)
Dimension	3.7" W x 2.7" H	
Weatherproof Rating	IP66	

FEATURES

- ◆ Sony 960H Chip / 700 Line High Resolution
- ◆ 3-Axis Wall or Ceiling Mountable
- ◆ OSD Control of All Major Functions
- ◆ 3.6mm Fixed Focal Lens
- ◆ Digital Wide Dynamic Range
- ◆ Digital Noise Reduction
- ◆ Day/Night Operation
- ◆ 18 IR LED's / 60 Foot IR Range
- ◆ Tamper Resistant
- ◆ IP66 Weatherproof Rating
- ◆ 12 Volt DC Power Required

PACKAGE CONTENTS

1. Camera
1. User Manual
1. Mounting Screws



RECOMMENDED ACCESSORIES

12VDC1AMP
12 Volt DC 1 Amp Power Supply

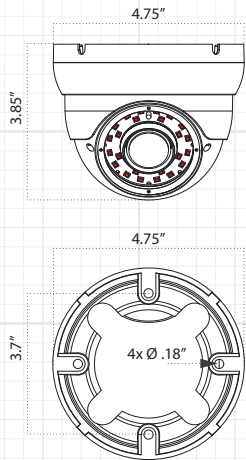
12VDCCORD10PK
10-Pack 12 Volt DC
Bare Lead Adapters



**Varifocal
2.8~12mm
Lens**

DWMVFIR960 / DWMVFIRW960

700 Line Outdoor IR Dome Cameras w/OSD
 Sony 960H Chip, D-WDR, OSD, DNR, 90' IR Range, 2.8~12mm Lens



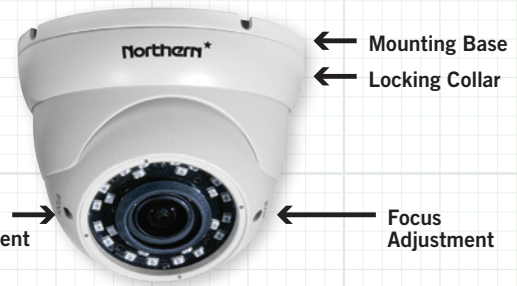
Dimensions



In-Line
Cable Mounted
OSD Control



DWMVFIR960



DWMVFIRW960

SPECIFICATION	DWMVFIR960	DWMVFIRW960
Imaging Device	960H 1/3" SONY Super HAD II CCD	
Resolution	700 TV Lines	
Minimum Illumination	0.0 Lux (IR LED On)	
Lens Size	2.8~12mm Varifocal	
IR LED Range / IR LED Count	90 Feet / 24 Pieces	
IR LED Wavelength	850nm	
Maximum Aperture	F1.2~2.0	
S/N Ratio	More than 52db	
Electronic Shutter Speed	AUTO, FLK, 1-60 ~ 1/100,000	
OSD (On Screen Display)	Yes (Cable Mounted Control)	
BLC (Backlight Compensation)	OFF / BLC / HBLC	
AGC Automatic Gain Control	AUTO / MANUAL	
White Balance	ATW, MANUAL, USER 1, USER 2	
Day-Night	COLOR / BW / AUTO	
DNR (Digital Noise Reduction)	ON / OFF	
D-WDR (Digital Wide Dynamic Range)	ON / OFF / LUMINANCE / CONTRAST	
Motion Detection	ON / OFF 4 - Zones Programmable	
Privacy Masking	ON / OFF 8 - Zones Programmable	
Sharpness	(Adjustable 1~255)	
TV System	NTSC	
Effective Pixels	976 (H) X 495 (V)	
Scanning System	2:1 Interlaced	
Sync System	Internal Negative Sync	
Video Output	1.0Vp-p 75 OHM Composite BNC	
Gamma Characteristics	0.45	
Power Requirement / Consumption	12 Volt DC / 400mA	
Operating Temperature	-14°F ~ 122°F	
Weight	1.6lb	
Housing / Color	Aluminum (Gray)	Aluminum (White)
Dimension	4.7" W x 3.3" H	
Weatherproof Rating	IP66	

FEATURES

- ◆ Sony 960H Chip / 700 Line Resolution
- ◆ 3-Axis Wall or Ceiling Mountable
- ◆ OSD Control of All Major Functions
- ◆ 2.8~12mm Varifocal Lens
- ◆ Digital Wide Dynamic Range
- ◆ Digital Noise Reduction
- ◆ Day/Night Operation
- ◆ 24 IR LED's / 90 Foot IR Range
- ◆ Tamper Resistant
- ◆ IP66 Weatherproof Rating
- ◆ 12 Volt DC Power Required

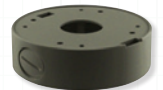
PACKAGE CONTENTS

1. Camera
1. User Manual
1. Mounting Screws

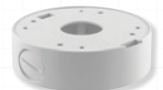


RECOMMENDED ACCESSORIES

DWMVFBB
Gray Back Box



DWMVFBBW
White Back Box



D212H960



700 Line Indoor Dome Camera

Sony Effio-V Chip, TDN, WDR, DNR, OSD, 2.8~12mm AI Lens

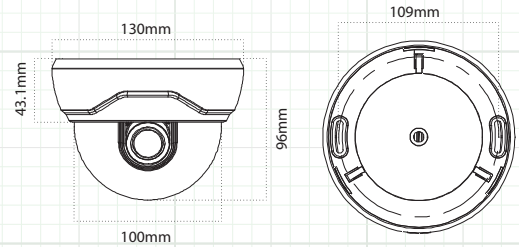


D212H960

Shown with
Wall Mount
(Included)



Shown with
White Cover
(Included)



Dimensions

SPECIFICATION	D212H960
Image Sensor	960H 1/3" Effio-V Sony Super HAD II CCD
Effective Picture Elements	976 (H) x 494 (V)
Resolution	700 TV Lines Color / 800 TV Lines B/W
OSD (On-screen Display)	Yes
WDR (Wide Dynamic Range)	Contrast / Clear Face (Low / Mid / High) Adjustable
3DNR (Digital Noise Reduction)	3DNR (0-6) Adjustable
Video Output	1.0 Vp-p (Sync. Negative) Termination 75 OHM
Lens Type – True Day/Night	2.8~12mm Varifocal Auto Iris Lens
Sense-up	Auto / Off
Shutter Speed	1/60 ~ 1/100,000 sec.
IR Cut Filter	Built-In Mechanical
Minimum Illumination	0.0005 Lux Sense Up Color/0.0002 Sense Up B/W
S/N Ratio	52dB or More (AGC Off)
Gain Control	Automatic, Low, Middle, High, Off
Sync System	Internal, External (L/L)
Gamma	$\gamma = 0.45$ typ.
White Balance	ATW (1,800°K~10,500°K) / PUSH / USER1 / USER2 / ANTI CR / PUSH / LOCK / MANUAL
Back Light Compensation	OFF / WDR / HLC / BLC
Day / Night	(AUTO / COLOR / B/W / EXT) Delay Adjustable
Mirror	OFF / H / V / H-V
Digital Zoom	Yes (ON / OFF) Adjustable
Digital Image Stabilizer	Yes ((ON / OFF)
IR Optimizer	Yes (ON / OFF)
Motion Detection	Yes (4 Zone)
Privacy Mask	Yes (15 Zone)
Power Input	12VDC/24VAC Dual Voltage Power
Power Requirement	Max. 250mA
Reverse Polarity Protection	Yes
Overall Camera Dimensions	5.2" (W) x 3.8" (H)
Weight	Approx. 1.1lb
Operating Temperature	14°F ~ 122°F
Weatherproof Rating	Indoor Only

FEATURES

- ◆ Sony 960H Effio-V Chip
- ◆ 700 Line Resolution
- ◆ True Wide Dynamic Range
- ◆ True Day/Night Mechanical IR Cut Filter
- ◆ 2.8~12mm Varifocal Auto Iris Lens
- ◆ 3-Axis Wall or Ceiling Mountable
- ◆ White & Black Housing Covers Included
- ◆ Sense-up / Slow Shutter Speed
- ◆ 12VDC/24VAC Dual Voltage Power
- ◆ OSD Control of All Major Functions
- ◆ 3D Digital Noise Reduction
- ◆ Video Test Output & Cable
- ◆ Adjustable Shutter Speed
- ◆ Manual 360° Horizontal Rotation
- ◆ Lined Dome Cover

PACKAGE CONTENTS

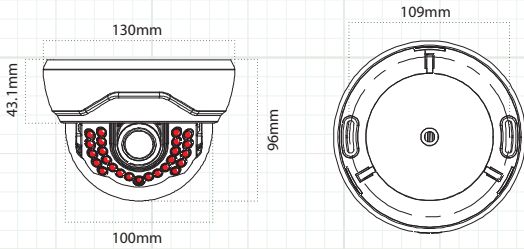
1. User Manual
1. Mounting Hardware Packet
1. Video Test Cable
1. Wall Mount
1. White Housing Cover





D212HIR960

700 Line Indoor IR Dome Camera Sony Effio-V Chip, TDN, WDR, DNR, OSD, 2.8~12mm AI Lens — 82' IR Range



Dimensions

Shown with White Cover (Included)



Shown with Wall Mount (Included)

D212HIR960

SPECIFICATION	D212HIR960
Image Sensor	960H 1/3" Effio-V Sony Super HAD II CCD
Effective Picture Elements	976 (H) x 494 (V)
Resolution	700 TV Lines Color / 800 TV Lines B/W
OSD (On-screen Display)	Yes
WDR (Wide Dynamic Range)	Contrast / Clear Face (Low / Mid / High) Adjustable
3DNR (Digital Noise Reduction)	3DNR (0-6) Adjustable
Video Output	1.0 Vp-p (Sync. Negative) Termination 75 OHM
Lens Type – True Day/Night	2.8~12mm Varifocal Auto Iris Lens
Sense-up	Auto / Off
Shutter Speed	1/60 ~ 1/100,000 sec.
IR Cut Filter	Built-In Mechanical
Minimum Illumination	0.0005 Lux Sense Up Color/0.0002 Sense Up B/W
IR LED Count / IR Range	24 IR LED's / 82' IR Range
S/N Ratio	52dB or More (AGC Off)
Gain Control	Automatic, Low, Middle, High, Off
Sync System	Internal, External (L/L)
Gamma	$\gamma = 0.45$ typ.
White Balance	ATW (1,800°K~10,500°K) / PUSH / USER1 / USER2 / ANTI CR / PUSH / LOCK / MANUAL
Back Light Compensation	OFF / WDR / HLC / BLC
Day / Night	(AUTO / COLOR / B/W / EXT) Delay Adjustable
Mirror	OFF / H / V / H-V
Digital Zoom	Yes (ON / OFF) Adjustable
Digital Image Stabilizer	Yes ((ON / OFF)
IR Optimizer	Yes (ON / OFF)
Motion Detection	Yes (4 Zone)
Privacy Mask	Yes (15 Zone)
Power Input	12VDC/24VAC Dual Voltage Power
Power Requirement	Max. 600mA
Reverse Polarity Protection	Yes
Overall Camera Dimensions	5.2" (W) x 3.8" (H)
Weight	Approx. 1.1lb
Operating Temperature	14°F ~ 122°F
Weatherproof Rating	Indoor Only

FEATURES

- ◆ Sony 960H Effio-V Chip
- ◆ 700 Line Resolution
- ◆ True Wide Dynamic Range
- ◆ True Day/Night Mechanical IR Cut Filter
- ◆ 2.8~12mm Varifocal Auto Iris Lens
- ◆ 3-Axis Wall or Ceiling Mountable
- ◆ White & Black Housing Covers Included
- ◆ Sense-up / Slow Shutter Speed
- ◆ 12VDC/24VAC Dual Voltage Power
- ◆ OSD Control of All Major Functions
- ◆ 3D Digital Noise Reduction
- ◆ Video Test Output & Cable
- ◆ 24 IR LED's / 82' IR Range
- ◆ Adjustable Shutter Speed
- ◆ Manual 360° Horizontal Rotation
- ◆ Lined Dome Cover

PACKAGE CONTENTS

1. User Manual
1. Mounting Hardware Packet
1. Video Test Cable
1. Wall Mount
1. White Housing Cover



DTW212H960 / DTW550H960



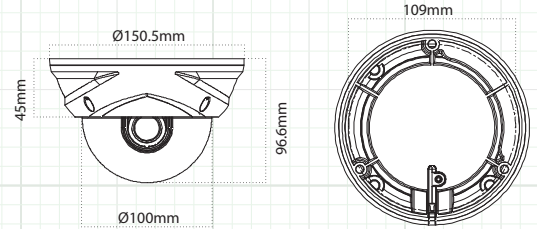
700 Line Weatherproof Tamper Resistant Dome Camera

Sony Effio-V Chip, TDN, WDR, DNR, OSD, 2.8~12mm or 5~50mm AI Lens



Shown with White
Paintable Snap-on
Cover (included)

DTW212H960 / DTW550H960



Dimensions

SPECIFICATION	DTW212H960	DTW550H960
Image Sensor	960H 1/3" Effio-V Sony Super HAD II CCD	
Effective Picture Elements	976 (H) x 494 (V)	
Resolution	700 TV Lines Color / 800 TV Lines B/W	
OSD (On-screen Display)	Yes	
WDR (Wide Dynamic Range)	Contrast / Clear Face (Low / Mid / High) Adjustable	
3DNR (Digital Noise Reduction)	3DNR (0-6) Adjustable	
Video Output	1.0 Vp-p (Sync. Negative) Termination 75 OHM	
Lens Type - True Day/Night	2.8~12mm Varifocal Auto Iris Lens	5~50mm Varifocal Auto Iris Lens
Sense-up	Auto / Off	
Shutter Speed	1/60 ~ 1/100,000 sec.	
IR Cut Filter	Built-In Mechanical	
Minimum Illumination	0.0005 Lux Sense Up Color/0.0002 Sense Up B/W	
S/N Ratio	52dB or More (AGC Off)	
Gain Control	Automatic, Low, Middle, High, Off	
Sync System	Internal, External (L/L)	
Gamma	$\gamma = 0.45$ typ.	
White Balance	ATW (1,800°K~10,500°K) / PUSH / USER1 / USER2 / ANTI CR / PUSH / LOCK / MANUAL	
Back Light Compensation	OFF / WDR / HLC / BLC	
Day / Night	(AUTO / COLOR / B/W / EXT) Delay Adjustable	
Mirror	OFF / H / V / H-V	
Digital Zoom	Yes (ON / OFF) Adjustable	
Digital Image Stabilizer	Yes ((ON / OFF)	
IR Optimizer	Yes (ON / OFF)	
Motion Detection	Yes (4 Zone)	
Privacy Mask	Yes (15 Zone)	
Power Input	12VDC/24VAC Dual Voltage Power	
Power Requirement	Max. 250mA	
Reverse Polarity Protection	Yes	
Overall Camera Dimensions	5.9" (W) x 3.8" (H)	
Weight	Approx. 2.0lb	
Operating Temperature	-20 ~ 122°F	
Weatherproof Rating	IP68	

FEATURES

- ◆ Sony 960H Effio-V Chip
- ◆ 700 Line Resolution
- ◆ True Wide Dynamic Range
- ◆ True Day/Night Mechanical IR Cut Filter
- ◆ 2.8~12mm Varifocal Auto Iris Lens (DTW212H960)
- ◆ 5~50mm Varifocal Auto Iris Lens (DTW550H960)
- ◆ Tamper Resistant / IP68 Weatherproof
- ◆ 3-Axis Wall or Ceiling Mountable
- ◆ White Paintable Snap-on Cover Included
- ◆ Sense-up 1024X
- ◆ 12VDC/24VAC Dual Voltage Power
- ◆ OSD Control of All Major Functions
- ◆ Digital Noise Reduction
- ◆ Video Test Output & Cable
- ◆ Adjustable Shutter Speed
- ◆ Manual 360° Horizontal Rotation

PACKAGE CONTENTS

1. User Manual
1. Mounting Template & Hardware Packet
1. Video Test Cable
1. L-Style Wrench
1. White Paintable Snap-on Cover

RECOMMENDED ACCESSORIES

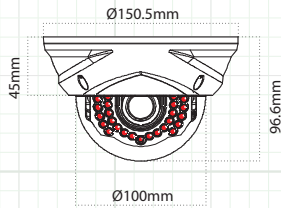
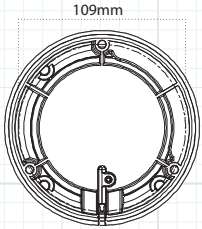
- DTWBB - Silver Back Box
- DTWBBW - White Back Box
- DTWWMT - Silver Wall Mount
- DTWWMTW - White Wall Mount





DTW212HIR960

700 Line Weatherproof Tamper Resistant **IR** Dome Camera Sony Effio-V Chip, TDN, WDR, DNR, OSD, 2.8~12mm AI Lens – 82' IR Range



Dimensions



Shown with White
Paintable Snap-on
Cover (included)



DTW212HIR960

SPECIFICATION	DTW212HIR960
Image Sensor	960H 1/3" Effio-V Sony Super HAD II CCD
Effective Picture Elements	976 (H) x 494 (V)
Resolution	700 TV Lines Color / 800 TV Lines B/W
OSD (On-screen Display)	Yes
WDR (Wide Dynamic Range)	Contrast / Clear Face (Low / Mid / High) Adjustable
3DNR (Digital Noise Reduction)	3DNR (0-6) Adjustable
Video Output	1.0 Vp-p (Sync. Negative) Termination 75 OHM
Lens Type – True Day/Night	2.8~12mm Varifocal Auto Iris Lens
Sense-up	Auto / Off
Shutter Speed	1/60 ~ 1/100,000 sec.
IR Cut Filter	Built-In Mechanical
Minimum Illumination	0.0005 Lux Sense Up Color/0.0002 Sense Up B/W
IR LED Count / IR Range / nm	24 IR LED's / 82' IR Range / 850nm
S/N Ratio	52dB or More (AGC Off)
Gain Control	Automatic, Low, Middle, High, Off
Sync System	Internal, External (L/L)
Gamma	$\gamma = 0.45$ typ.
White Balance	ATW (1,800°K~10,500°K) / PUSH / USER1 / USER2 / ANTI CR / PUSH / LOCK / MANUAL
Back Light Compensation	OFF / WDR / HLC / BLC
Day / Night	(AUTO / COLOR / B/W / EXT) Delay Adjustable
Mirror	OFF / H / V / H-V
Digital Zoom	Yes (ON / OFF) Adjustable
Digital Image Stabilizer	Yes ((ON / OFF)
IR Optimizer	Yes (ON / OFF)
Motion Detection	Yes (4 Zone)
Privacy Mask	Yes (15 Zone)
Power Input	12VDC/24VAC Dual Voltage Power
Power Requirement	Max. 600mA
Reverse Polarity Protection	Yes
Overall Camera Dimensions	5.9" (W) x 3.8" (H)
Weight	Approx. 2.0lb
Operating Temperature	-20 ~ 122°F
Weatherproof Rating	IP68

FEATURES

- ◆ Sony 960H Effio-V Chip
- ◆ 700 Line Resolution
- ◆ True Wide Dynamic Range
- ◆ True Day/Night Mechanical IR Cut Filter
- ◆ 2.8~12mm Varifocal Auto Iris Lens
- ◆ Tamper Resistant / IP68 Weatherproof
- ◆ 3-Axis Wall or Ceiling Mountable
- ◆ White Paintable Snap-on Cover Included
- ◆ Sense-up 1024X
- ◆ 12VDC/24VAC Dual Voltage Power
- ◆ OSD Control of All Major Functions
- ◆ Digital Noise Reduction
- ◆ Video Test Output & Cable
- ◆ 24 IR LED's / 82' IR Range
- ◆ Adjustable Shutter Speed
- ◆ Manual 360° Horizontal Rotation

PACKAGE CONTENTS

1. User Manual
1. Mounting Template & Hardware Packet
1. Video Test Cable
1. L-Style Wrench
1. White Paintable Snap-on Cover

RECOMMENDED ACCESSORIES

DTWBB - Silver Back Box
DTWBBW - White Back Box

DTWWMT - Silver Wall Mount
DTWWMTW - White Wall Mount



D7960 / D7W960 / CB700WA

700 Line Indoor Color Dome Camera 3-Axis, AGC, AWB, BLC, 3.6mm Lens

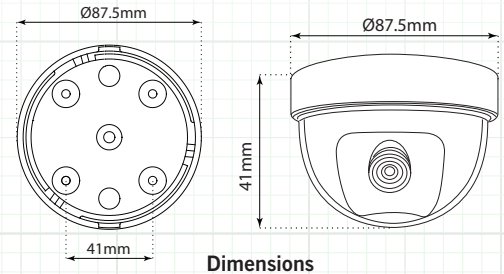


D7960



D7W960

**Featuring
Northern Lights
Technology**



Dimensions

SPECIFICATION	D7960	D7W960
Image Sensor	960H 1/3" Sony Super HAD II CCD	
Video Output	1.0 Vp-p (Sync. Negative) Termination 75 Ohm	
Minimum Illumination	0.001 Lux (F/1.2)	
S/N Ratio	52dB	
Electronic Shutter	Auto, 1/60 ~ 1/100,000 sec.	
Power Range / Consumption	12V DC ±10% / Max. 110mA	
Operating Temperature	14° ~ 122°	
Overall Camera Dimensions	3.4" (W) x 2.35" (H)	
Housing – Polycarbonate	Black	White
Weight	7oz	

FEATURES

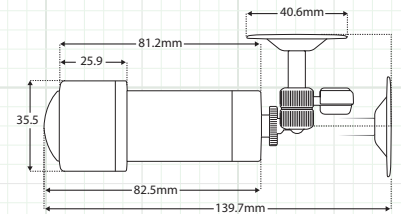
- ◆ Sony 960H Chip / 700 Line Resolution
- ◆ 3-Axis Wall or Ceiling Mountable
- ◆ 3.6mm Wide Angle Lens
- ◆ BLC, AGC, AWB
- ◆ 12 Volt DC Power Required

PACKAGE CONTENTS

1. Camera
1. User Manual
1. Mounting Hardware Packet



700 Line Outdoor Ultra Wide Angle Bullet Camera Sony 960H Chip, D-WDR, OSD, DNR, 2.2mm Lens



Dimensions



CB700WA

FEATURES

- ◆ 700 Line Resolution
- ◆ DWDR, 3DNR, OSD
- ◆ Sense-up 256X
- ◆ 2.2mm Ultra Wide Angle Lens
- ◆ IP66 Weatherproof Rating
- ◆ 12 Volt DC Power Required

PACKAGE CONTENTS

1. Camera
1. OSD Cable
1. Mounting Hardware Packet
1. User Manual



SPECIFICATION

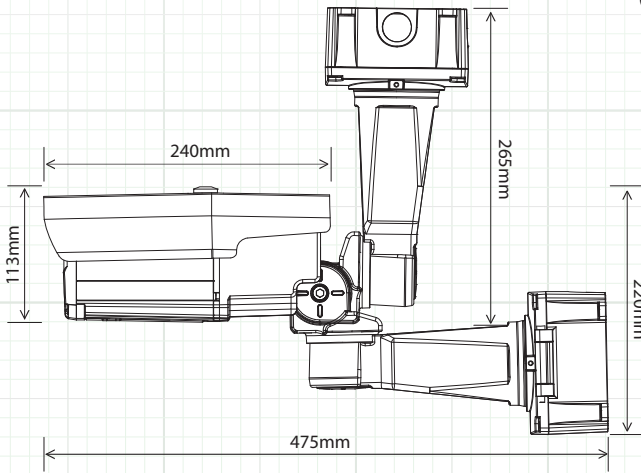
CB700WA

Image Sensor	960H 1/3" Sony Super HAD CCD
TV System	NTSC
Effective Pixels	976 (H) x 494 (V)
Lens	Fixed 2.2mm Ultra Wide Angle
Video Output	1.0V p-p, 75 OHM, Composite
Minimum Illumination	0.00006 Lux (Sense-up ON)
S/N Ratio (AGC OFF)	More than 50db
Electronic Shutter Speed	Auto, FLK, 1/60~1/100,000 Adjustable
Day/Night (Electronic)	Auto, Color, B/W, EXT
Mirror	Yes - Mirror, Rotate, Vertical Flip
Power Requirement / Consumption	12 Volt DC / 120 mA
Operating Temperature	-14°F ~ 122°F
Weight	8oz
Housing	Aluminum (Black)
Dimensions (L x W x H)	3.25" x 1.4" x 1.4"

True Wide Dynamic
True Day/Night

PRO1000B3 / PRO1000B6

1000 Line, Heavy Duty Outdoor Bullet Cameras with IR Sony IMX 238 Chip, True D/N, True WDR, OSD, DNR



Dimensions



PRO1000B3 / PRO1000B6

SPECIFICATION	PRO1000B3	PRO1000B6
Image Sensor	Sony IMX-238 Sensor	
Effective Pixels	1296 (H) x 1041 (V)	
Resolution	1000 TV Lines Color	
OSD (On Screen Display)	Yes - Hatch Style	
True Wide Dynamic Range	Yes - Double Scan WDR (LOW / MIDDLE / HIGH)	
Digital Noise Reduction	Yes - 2D + 3D DNR (OFF / LOW / Middle / HIGH)	
Video Output	1.0Vp-p / 75 OHM	
Lens Type - True Day Night	3~12mm	6~50mm
IR Cut Filter	Yes - Mechanical	
Sense-Up	Yes - OFF, 2x ~60x	
Minimum Illumination	0.002 Lux Color (F1.2/50IRE/DSSx60) 0.0002 Lux B/W (F1.2/50IRE/DSSx60)	
IR LED (850nm) / Range	100pc / 250 Foot	100pc / 325 Foot
S/N Ratio	50 [db] / AGC Off	
Electronic Shutter	AUTO / MANUAL - 1/30 ~ 1/60,000 sec / FLICKER	
Iris Mode	ALC (Auto Iris Control) ELC (Electric Iris Level Control)	
Gain Control	On, Off, 0~20 Adjustable	
White Balance	Auto / Auto-Ext / PRESET / MANUAL	
Sync System	Internal	
Scanning System	Progressive Scan	
Video System	NTSC	
Gamma	γ= 0.45 Approx	
Back Light Compensation	OFF / WDR / BLC	
HLMASK (High Light Mask)	OFF / ALL / DAY / NIGHT	
Day / Night	A.CDS, A.AGC, Color, B/W	
Digital Zoom	Yes 1x~10x	
Mirror Mode	Yes - Horizontal & Vertical	
Power Range	12VDC/24VAC Dual Voltage Power (Separate Leads)	
Power Requirement	Camera Only: 200mA Max / LED-Fan-Heater On 1.5Amp	
Recommended Power	2Amp Power Supply Recommended	
Dimensions (Camera Only)	5.5" (W) x 4.5" (H) x 9.5" (D)	
Weight	Approx. 8.6lb	
Operating Temp	-40°F ~ 130°F	
Weatherproof Rating	IP66	

FEATURES

- ◆ Sony IMX-238 Sensor / 1000 Line Resolution
- ◆ True Wide Dynamic Range
- ◆ True Day/Night Operation w/ ICR Cut Filter
- ◆ Built-in Heater & Fan
- ◆ 3~12mm - 250' IR Range
- ◆ 6~50mm - 325' IR Range
- ◆ Heavy Duty Professional Housing
- ◆ 3° Mount Adjustments for Precise Aiming
- ◆ Hinged Back Box with 3/4" Knockouts
- ◆ 3-Axis Wall or Ceiling Mountable
- ◆ OSD Controls on Door Hatch
- ◆ Sense-up / Northern Lights Technology
- ◆ Move & Leave Lens Adjustments
- ◆ IR LED On/Off Feature
- ◆ IR LED Beam Adjustment
- ◆ -40°F ~ 130°F Operating Temp for Harsh Environments
- ◆ Video Test Output & Cable
- ◆ 12VDC/24VAC Dual Voltage Power
- ◆ IP66 Weatherproof Rating

INCLUDED ACCESSORIES

1. Mounting Arm & Junction Box
1. Mounting Gasket, Mounting Screws & Anchors (x4)
1. Junction Box Caps, Hinge Screw & Nut
1. 12 Volt DC Bare Lead Adapter
1. Video Test Cable
1. Allen Wrenches (x2)

B7IRW960 / B7IR960

**Fixed
3.6mm
Lens**

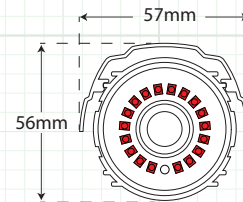
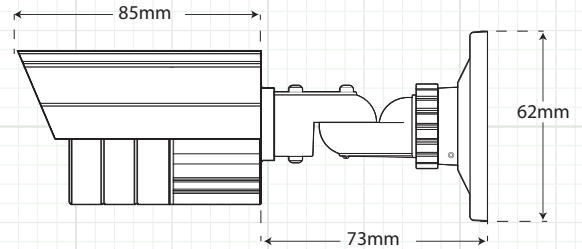
700 Line Outdoor **IR** Bullet Cameras w/OSD

Sony 960H Chip, D-WDR, OSD, DNR, 60' IR Range, 3.6mm Lens



B7IRW960

B7IR960



Dimensions

In-Line
Cable Mounted
OSD Control

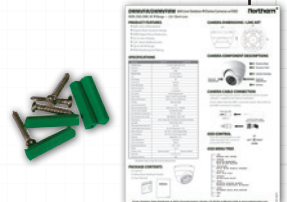
SPECIFICATION	B7IRW960	B7IR960
Imaging Device	960H 1/3" SONY Super HAD II CCD	
Resolution	700 TV Lines	
Minimum Illumination	0.0 Lux (IR LED On)	
Lens Size / Maximum Aperture	3.6mm Fixed Focal Lens	
IR LED Range / IR LED Count	60 Feet / 24 Pieces	
IR LED Wavelength	850nm	
Maximum Aperture	F2.0	
S/N Ratio	More than 52db	
Electronic Shutter Speed	AUTO, FLK, 1-60 ~ 1/100,000	
OSD (On Screen Display)	Yes (Cable Mounted)	
BLC (Backlight Compensation)	OFF / BLC / HBLC	
AGC Automatic Gain Control	AUTO / MANUAL	
White Balance	ATW, MANUAL, USER 1, USER 2	
Day-Night	COLOR / BW / AUTO / EXT 1 / EXT 2	
DNR (Digital Noise Reduction)	ON / OFF	
D-WDR (Digital Wide Dynamic Range)	ON / OFF / LUMINANCE / CONTRAST	
Motion Detection	ON / OFF 4 - Zones Programmable	
Privacy Masking	ON / OFF 8 - Zones Programmable	
Sharpness	(Adjustable 0~255)	
TV System	NTSC	
Effective Pixels	976 (H) X 495 (V)	
Scanning System	2:1 Interlaced	
Sync System	Internal Negative Sync	
Video Output	1.0Vp-p 75 OHM Composite BNC	
Gamma Characteristics	0.45	
Power Requirement / Consumption	12 Volt DC / 300mA	
Operating Temperature	-14°F ~ 122°F	
Weight	1.5lb	
Housing / Color	Aluminum (White)	Aluminum (Gray)
Dimension	2.5" x 2.2" x 6.2"	
Weatherproof Rating	IP66	

FEATURES

- ◆ Sony 960H Chip / 700 Line Resolution
- ◆ 3-Axis Cable Management Mount
- ◆ 3.6mm Fixed Focal Lens
- ◆ OSD Control of All Major Functions
- ◆ Digital Wide Dynamic Range
- ◆ Digital Noise Reduction
- ◆ Day/Night Operation
- ◆ 24 IR LED's / 60 Foot IR Range
- ◆ IP66 Weatherproof Rating
- ◆ 12 Volt DC Power Required

PACKAGE CONTENTS

1. Camera
1. User Manual
1. Allen Wrench
1. Mounting Screws



**Varifocal
2.8~12mm
Lens**

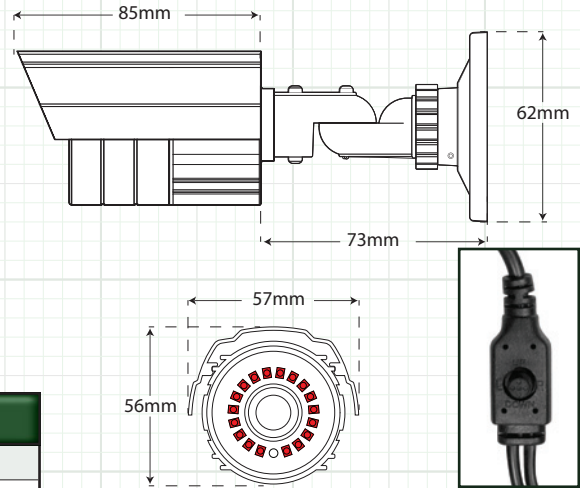
B7VFIRW960 / B7VFIR960

700 Line Outdoor IR Bullet Camera w/OSD
Sony 960H Chip, D-WDR, OSD, DNR, 100' IR Range, 2.8~12mm Lens



B7VFIRW960

B7VFIR960



Dimensions

In-Line
Cable Mounted
OSD Control

SPECIFICATION	B7VFIRW960	B7VFIR960
Imaging Device	960H 1/3" SONY Super HAD II CCD	
Resolution	700 TV Lines	
Minimum Illumination	0.0 Lux (IR LED On)	
Lens Size / Maximum Aperture	2.8~12mm Varifocal / F1.2~2.0	
IR LED Range / IR LED Count	100 Feet / 42 Pieces	
IR LED Wavelength	850nm	
Maximum Aperture	F1.2~2.0	
S/N Ratio	More than 52db	
Electronic Shutter Speed	AUTO, FLK, 1-60 ~ 1/100,000	
OSD (On Screen Display)	Yes (Cable Mounted)	
BLC (Backlight Compensation)	OFF / BLC / HBLC	
AGC Automatic Gain Control	AUTO / MANUAL	
White Balance	ATW, MANUAL, USER 1, USER 2	
Day-Night	COLOR / BW / AUTO	
DNR (Digital Noise Reduction)	ON / OFF	
D-WDR (Digital Wide Dynamic Range)	ON / OFF / LUMINANCE / CONTRAST	
Motion Detection	ON / OFF 4 - Zones Programmable	
Privacy Masking	ON / OFF 8 - Zones Programmable	
Sharpness	(Adjustable 1~255)	
TV System	NTSC	
Effective Pixels	976 (H) X 495 (V)	
Scanning System	2:1 Interlaced	
Sync System	Internal Negative Sync	
Video Output	1.0Vp-p 75 OHM Composite BNC	
Gamma Characteristics	0.45	
Power Requirement / Consumption	12 Volt DC / 400mA	
Operating Temperature	-14°F ~ 122°F	
Weight	1.3lb	
Housing / Color	Aluminum (White)	Aluminum (Gray)
Dimension	3.3" x 3.4" x 9.9"	
Weatherproof Rating	IP66	

FEATURES

- ◆ Sony 960H Chip / 700 Line Resolution
- ◆ 3-Axis Cable Management Mount
- ◆ 2.8~12mm Varifocal Lens
- ◆ OSD Control of All Major Functions
- ◆ Digital Wide Dynamic Range
- ◆ Digital Noise Reduction
- ◆ Day/Night Operation
- ◆ 42 IR LED's / 100 Foot IR Range
- ◆ IP66 Weatherproof Rating
- ◆ 12 Volt DC Power Required

PACKAGE CONTENTS

1. Camera
1. User Manual
2. Allen Wrenches
1. Mounting Screws



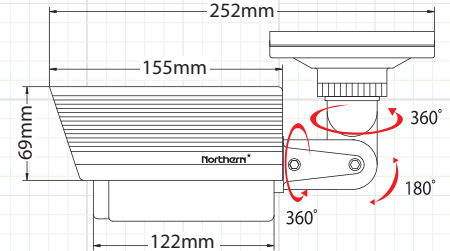
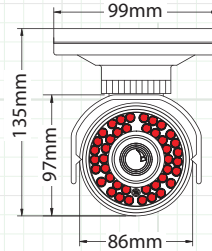
CB700VFIR960 / CB700VFIRW960 / CB700VFIR5960

960H/700 Line Outdoor **IR** Bullet Cameras – 150' IR Range TDN, WDR, DNR, OSD, 2.8~12mm or 5~50mm Lens



CB700VFIR960

CB700VFIR960/ CB700VFIR5960



Dimensions

SPECIFICATION	CB700VFIR960 /W	CB700VFIR5960
Image Sensor	1/3" Color 960H CCD	
Effective Picture Elements	976(H) x 494(V)	
Resolution	700 Horizontal TV Lines	
OSD (On-screen Display)	Yes (Built-in)	
D-WDR (Wide Dynamic Range)	Indoor / Outdoor / Off (0 ~ 15)	
DNR (Digital Noise Reduction)	3D-DNR (1~50 Level Adjustable)	
Sense-Up	Off/Auto (2X~256X)	
Video Signal	1.0Vp-p (Sync, Negative) Termination 75 OHM	
Minimum Illumination	LED ON: 0.0 Lux / LED Off: 0.01 Lux / Sense-up 0.00006 Lux	
LED	IR LED 42pcs 840nm	
LED Range	150'	
S/N Ratio	52dB	
Electronic Shutter	1/60 ~ 1/100,000 sec.	
Gain Control	Low / Middle / High	
Sync System	2:1 Interlaced, Internal / Line Lock (in 24 VAC)	
Gamma	$\gamma = 0.45$ Typ.	
Back Light Compensation	OFF / BLC / HLC	
Day/Night	Auto (AGC) / Day / Night	
Mirror	H Reverse / V Reverse / Rotate	
Defog	Off / Manual / Auto	
White Balance	ATW / AWB / Manual / AWC >SET	
Power Input	12VDC/24VAC Dual Voltage Power	
Power Consumption	12 Volt DC: IR OFF (200mA), IR ON (750mA) 24 Volt AC: IR OFF (100mA), IR ON (400mA)	
Reverse Polarity Protection	Yes	
Operating Temperature	-20°F ~ 122°F	
Lens Type	True D/N Auto Iris 2.8~12mm	True D/N Auto Iris 5~50mm
Overall Camera Dimensions	3.4" x 3.8" x 9.9"	
Weight	3.3lb	
Weatherproof Rating	IP67	

FEATURES

- ◆ 960H Chip / 700 Line Resolution
- ◆ Digital Wide Dynamic Range
- ◆ TDN Mechanical IR Cut Filter
- ◆ 2.8~12mm or 5~50mm Lens Options
- ◆ Sense-up 256X
- ◆ 12VDC/24VAC Dual Voltage Power
- ◆ External Lens Adjustment
- ◆ 42 IR LED's – 150' IR Range
- ◆ Wall or Ceiling Mountable
- ◆ OSD Control of all Major Functions
- ◆ Digital Noise Reduction
- ◆ Cable Management Mount
- ◆ Included Mounting Plate
- ◆ Video Test Connector With Cable
- ◆ IP67 Weatherproof Rating

PACKAGE CONTENTS

1. User Manual
1. Mounting Hardware Packet
1. Video Test Cable
1. L-Style Wrench
1. Bare Lead Power Adapter
1. Mounting Plate / Gasket

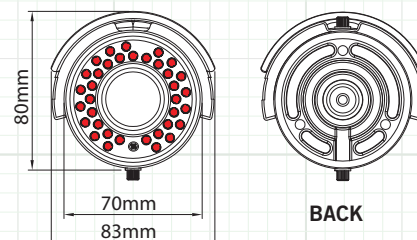
B/W License Plate Capture, IR Bullet Camera

Note: For license plate capture only.

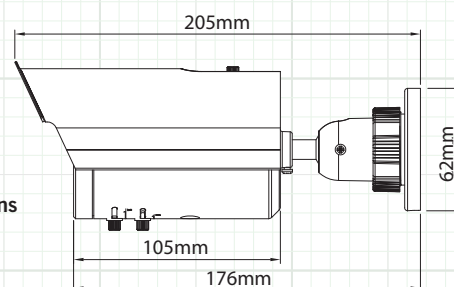
This technology will not take pictures of surrounding areas.



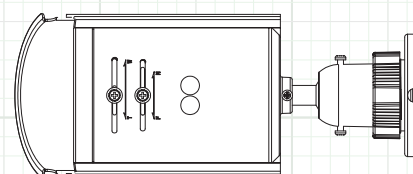
LPRCAM



BACK



Dimensions



ACTUAL LPR CAPTURE

SPECIFICATION	LPRCAM
Image Sensor	1/3" SONY CCD
Effective Picture Elements	768 x 494
Resolution	600 TV Lines B/W
Sync System	Internal
Scanning System	2:1 Interlace
Lens Type	IR Corrective, 9~22mm, F1.4 DC Iris Lens
Viewing Angle	Horizontal: 32.1° ~ 13.1° / Vertical: 23.3° ~ 9.8°
Gamma	0.45
Minimum Illumination	0.0 Lux IR LED On
S/N Ratio	More than 50dB (AGC Off)
Back Light Compensation	Auto (Center Weighting)
Video Output	1.0 Vp-p (Sync. Negative) Termination 75 OHM
IR LED	36pc Super Power LED
IR Wavelength	850nm
IR Range	50 Feet
LED Lifetime	More than 10,000 hours
Capture Range	10 ~ 27 Feet
Capture Speed	Up to 56 mph
Power Input	12VDC/24VAC Dual Voltage Power
Power Requirement	Max 10W
Overall Camera Dimensions	3.3" x 8.1"
Weight	approx 1.35lb
Operating Temperature	-14° F ~ 122° F
Weatherproof Rating	IP66

FEATURES

- ◆ 600 Lines of Resolution
- ◆ Headlight Suppression Technology
- ◆ 9~22mm IR Corrective Lens
- ◆ 50' IR LED / 27' Capture Range
- ◆ 36 Super Power LEDs
- ◆ Capture Speed up to 56 MPH
- ◆ Cable Management Bracket
- ◆ 12VDC/24VAC Dual Voltage Power
- ◆ IP66 Weatherproof Rating

INCLUDED ACCESSORIES

1. Camera
1. User Manual
1. Mounting Hardware Packet

PTZ Series Cameras & Accessories

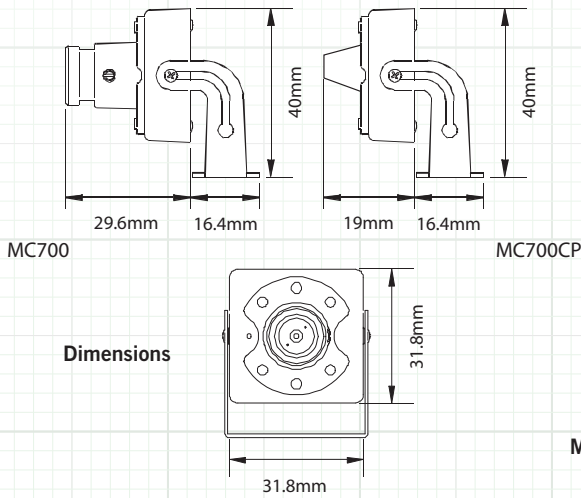
PTZ Series Specifications

FEATURES	PTZWP12X	PTZOD27X	PTZOD37X
Type	Indoor / Outdoor 12X	Outdoor 27X	Outdoor 37X
Video Signal System	NTSC		
CCD	1/4" Interline Transfer CCD		
Effective Pixels	768 (H) X 494 (V)	976 (H) X 494 (V)	
Horizontal Res.	600 Lines(Color), 680 Lines (B/W)	700 Lines(Color), 750 Lines (B/W)	
Video Output	1Vp-p Composite Video (75 OHM)		
S/N	Ratio 52 dB		
Digital Zoom	16X		
Min. Illumination	0.2 Lux Color / 0.02 Lux B/W		
Zoom Module	SCM-2120	SCM-2270	SCM-2370
Optical Zoom	12X	27X	37X
Focal length	3.94mm ~ 46.05mm (F = 1.6~1.8)	3.5mm ~ 95mm (F = 1.6 ~ 2.8)	3.5mm ~ 129.5mm (F = 1.6 ~ 3.9)
Day & Night	Auto / Day (Color) / Night (ICR, B/W)	Auto / BW / Color	
Focus	Auto / Manual / Semi Auto	Auto / Manual	
Iris	Auto / Manual / Semi Auto	Auto / Manual	
Shutter	NTSC: 1/60 ~ 1/120000 sec	NTSC: 1/60 ~ 1/120000 sec	
AGC	Low / Middle / High / Off	Off / Low / Middle / High / Manual	
White Balance	Auto / Manual (Red, Blue Gain Adjustable)	ATW / AWC / Indoor / Outdoor / Manual	
BLC	Normal / High / Off	ON/OFF	
Sense-up	ON/OFF	ON/OFF	
SSNR	Low / Middle / High / Off	Low / Middle / High / Off	
Pan	Pan : 360° (Continuous)	Pan : 360° (Continuous)	
Tilt	Tilt : 180° (Auto-Flip), 95°(Normal)	Tilt : 180° (Auto-Flip), 90° (Normal)	
Preset Speed	Go to Preset Speed: 1~300°/sec	Go to Preset Speed: 500°/sec	
Preset Pan Speed	0.05~300°/sec	0.01°~300°/S	
Preset Tilt Speed	0.05~180°/sec	0.01°~150°/S	
Preset Number	127 Preset	256 Preset	
Pattern	4 Pattern, 1200 commands /Pattern	4 Pattern, 180 Second Memory (300 commands)	
Group	8 Group (20 action entities per Group)	8 Group (32 action entities per Group)	
Auto Scan	Scan Speed 1~250 , Tilt angle optional	Yes	
Direction	INVERSE / NORMAL	No	
Swing	8 Swing (Autoscan)		
Auto Flip/Auto Parking	Yes		
Communication	RS-485		
Protocol	Pelco-D, Pelco-P		
Privacy Zone	8 Zone	1 Zone	
Alarm Input	4 Input	7 Input	
OSD	Menu / PTZ INFORMATION		
Fan and Heater	Yes	Yes	
Required Power	12 Volt DC / 1.1A	24 Volt AC / 2.1A	
Dimension	190 x 190 x 144 mm	364 x 350 x 202mm	
Weight	5.7lb	12.4lb	12.4lb
Operating Temp.	-14°F ~ 122°F	-31°F ~ 140°F	-31°F ~ 140°F
Weather Proof Rating	IP66		

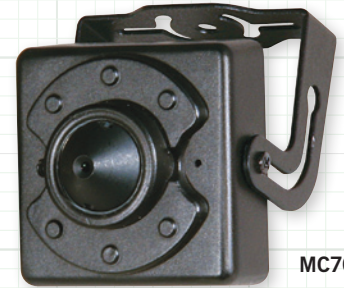
Note: Specification subject to change without notice

Specialty Cameras

MC700 / MC700CP Ultra Miniature Indoor Day/Night Camera



MC700



MC700CP

SPECIFICATION	MC700	MC700CP
Imaging Device	1/3" SONY Super HAD II CCD	
Resolution	Color 700 TV Lines – B/W 800 TV Lines	
TV System	NTSC	
Lens	Fixed Focal 3.6mm	Conical Pinhole 3.7mm
Video Output	1.0Vp-p 75 OHM Composite BNC	
Minimum Illumination	0.1 Lux	
S/N Ratio	52dB (AGC Off)	
Electronic Shutter Speed	Auto - Manual (1/60 ~ 1/100,000 sec.)	
OSD w/DWDR, BLC, AGC	Yes Built-in on Back of Camera	
Day/Night	Electronic Type (Auto, Color, B/W)	
Power Requirement / Consumption	Regulated 12 Volt DC +/- 10% / 120 mA	
Operating Temperature	14° ~ 122°F	
Housing / Weight	Metal Case (Black) / 1.8oz	
Dimensions (H x W x D)	1.25" x 1.25" x 1.19"	1.25" x 1.25" x .75"

FEATURES
◆ SONY 960H Chip / 700 Line Resolution
◆ Digital Wide Dynamic Range
◆ 3.6mm Standard Lens (MC700)
◆ 3.7mm Conical Pinhole Lens (MC700CP)
◆ OSD Control of All Major Functions
◆ Auto Electronic Shutter
◆ 12VDC Power Required
◆ For Indoor Use

PIR37 Wall Mount PIR Detector Camera

SPECIFICATION	PIR37
Image Sensor	1/3" Sharp High Resolution CCD
TV System	NTSC
Lens	3.7mm Fixed Focal (Pinhole Style), F1.2
Resolution	600 TV Lines
Minimum Illumination	0.6 Lux
BLC (Backlight Compensation)	On (Factory Default)
AGC (Automatic Gain Control)	On (Factory Default)
AWB (Automatic White Balance)	On (Factory Default)
AES (Automatic Electronic Shutter)	On (Factory Default)
Power Requirement / Consumption	12 Volt DC (Regulated) / 75mA
Operating Temperature	14°F ~ 122°F
Weight	9.6oz
Housing	Polycarbonate (Off White)
Dimensions	4.9" x 2.2"



PIR37

FEATURES
◆ 540 Lines of Resolution
◆ Built-in 3.7mm Pinhole Lens
◆ Auto White Balance
◆ Auto Back Light Compensation
◆ Auto Electronic Shutter
◆ 12 Volt DC Power Required
◆ For Indoor Use

BX7WDR960

True Wide Dynamic
True Day/Night

700 Line Day/Night Professional Camera Sony Effio-V Chip, TDN, WDR, OSD



BX7WDR960

*Lens Sold Separately

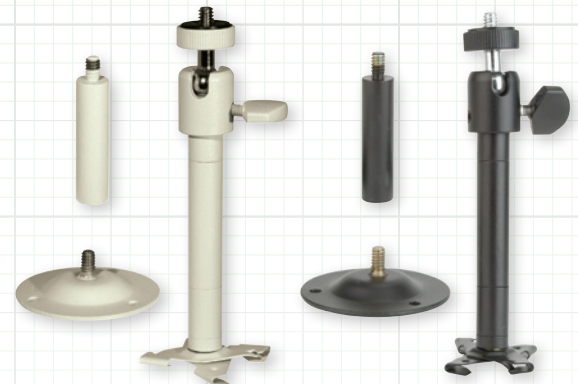
SPECIFICATION	BX7WDR960
Image Sensor	960H 1/3" Effio-V Sony Super HAD II CCD
Effective Picture Elements	976 (H) x 494 (V)
Resolution	700 TV Lines Color / 800 TV Lines B/W
OSD (On-screen Display)	Yes (Built-in on Rear Panel)
WDR (Wide Dynamic Range)	Contrast / Clear Face (Low / Mid / High) Adjustable
3DNR (Digital Noise Reduction)	3DNR (0-6) Adjustable
Video Output	1.0 Vp-p (Sync. Negative) Termination 75 OHM
Lens Type	Accepts C/CS Mount - Lens not included
Sense-up	Auto / Off
Shutter Speed	1/60 ~ 1/100,000 sec.
IR Cut Filter	Built-In Mechanical
Minimum Illumination	0.0005 Lux Sense Up Color/0.0002 Sense Up B/W
S/N Ratio	52dB or More (AGC Off)
Gain Control	Automatic, Low, Middle, High, Off
Sync System	Internal, External (L/L)
Gamma	$\gamma = 0.45$ typ.
White Balance	ATW (1,800°K~10,500°K) / PUSH / USER1 / USER2 / ANTI CR / PUSH / LOCK / MANUAL
Back Light Compensation	OFF / WDR / HLC / BLC
Day / Night	(AUTO / COLOR / B/W / EXT) Delay Adjustable
Mirror	OFF / H / V / H-V
Digital Zoom	Yes (ON / OFF) Adjustable
Digital Image Stabilizer	Yes ((ON / OFF)
IR Optimizer	Yes (ON / OFF)
Motion Detection	Yes (4 Zone)
Privacy Mask	Yes (15 Zone)
Power Input	12VDC/24VAC Dual Voltage Power
Power Requirement	Max. 250mA
Reverse Polarity Protection	Yes
Overall Camera Dimensions	2.4" (W) x 2.5" (H) x 4.3" (L)
Weight	Approx. 0.6lb
Weatherproof Rating	Indoor Only
Operating Temperature	14°F ~ 122°F

FEATURES

- ◆ Sony 960H Effio-V Chip
- ◆ 700 Line Resolution
- ◆ True Wide Dynamic Range
- ◆ True Day/Night Mechanical IR Cut Filter
- ◆ Sense-up / Slow Shutter Speed
- ◆ 12VDC/24VAC Dual Voltage Power
- ◆ Easy Side Mount Back Focus Adjustment
- ◆ OSD Control of All Major Functions
- ◆ 3D Digital Noise Reduction

Versatile All-Metal Camera Mounts Wall, Ceiling or T-Bar Mountable

SPECIFICATION	MCM6W	MCM6
Max Load	10lb	
Construction / Color	All-Metal / White	All-Metal / Black
Dimensions (Base Width)	2.5" with Wall-Ceiling Base / 2" with T-Bar Base	
Dimensions (Height)	2.5", 4.5" and 6.5" Configuration options	
Weight	0.8lb	
Swivel Angle / Tilt Angle	360° / 210°	



MCM6W

MCM6