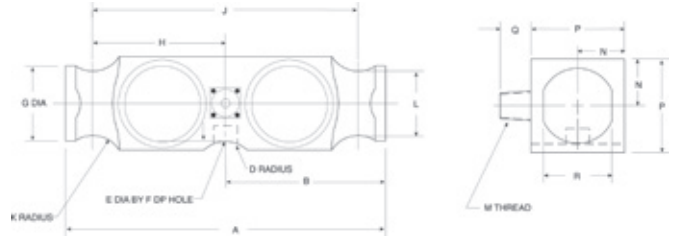


9223



Double-ended Beam, Stainless Steel, NTEP Certified 1:10,000 Class III L Multiple Cell, IP67



Picture is a representation of actual product



Specifications

<p>Full Scale Output: 3.0mV/V</p> <p>Output Resistance: 700 (± 7) ohms</p> <p>Input Resistance: 700 (± 7) ohms</p> <p>Material/Finish: Stainless steel</p> <p>Temperature: Compensated range 14°F to 104°F (-10°C to 40°C) Operating range -40°F to 150°F (-40°C to 65°C)</p>	<p>Manufacturer Model Number: 9223-B10-XX-40P1 (1:10,000)</p> <p>Safe Overload: 150% full scale</p> <p>Safe Sideload: 100% full scale</p> <p>Rated Excitation: 5-10 VDC (20 V maximum)</p> <p>Non-repeatability: 0.01% full scale</p> <p>Combined Error: 0.02% full scale</p>	<p>Insulation Resistance: 5,000 megohms</p> <p>Deflection at Capacity: 50,000 lb=0.018 in (0.5 mm) 65,000 lb=0.022 in (0.6 mm) 100,000 lb=0.034 in (0.9 mm)</p> <p>Seal Type: Environmentally sealed, IP67</p> <p>Cable Length: 40 ft (12.2 m)</p> <p>Cable Diameter: 0.295 polyurethane jacket</p>	<p>Cable Color Code: Red+ Excitation Black.....- Excitation Green+ Signal White- Signal Transparent..... Shield</p> <p>Warranty: One-year limited warranty</p> <p>Approvals:  </p>
--	---	--	---

Dimensions

RATED CAPACITY	A	B	D	E	F	G	H	J	K	L	M	N	P	Q	R
lb/inches															
50,000-125,000	10.25	5.12	1.00	0.75	0.78	2.40	5.13	8.50	1.00	2.06	1/2-14 NPT	1.50	2.94	1.03	2.20
kg/mm															
22,679.6-56,699	260.4	130.1	25.4	19.1	19.8	61.0	130.3	215.9	25.4	52.3	1/2-14 NPT	38.1	76.2	26.2	55.9

Order Information

LOAD RATING	PART #	EST. SHIPPING WEIGHT	PRICE
50,000 lb	(22,679.6 kg) 84150	22 lb	\$995.00
65,000 lb	(29,483.5 kg) 84151	22 lb	995.00
100,000 lb	(45,359.2 kg) 84152	22 lb	1,315.00
125,000 lb	(56,699.1 kg) 84153	22 lb	1,315.00

*Conduit is recommended for maximum protection against the ingress of water and moisture through the cable entry

Weigh Module Available

MANUFACTURER	MODEL	PAGE #
Rice Lake Weighing Systems	Translink™	102