

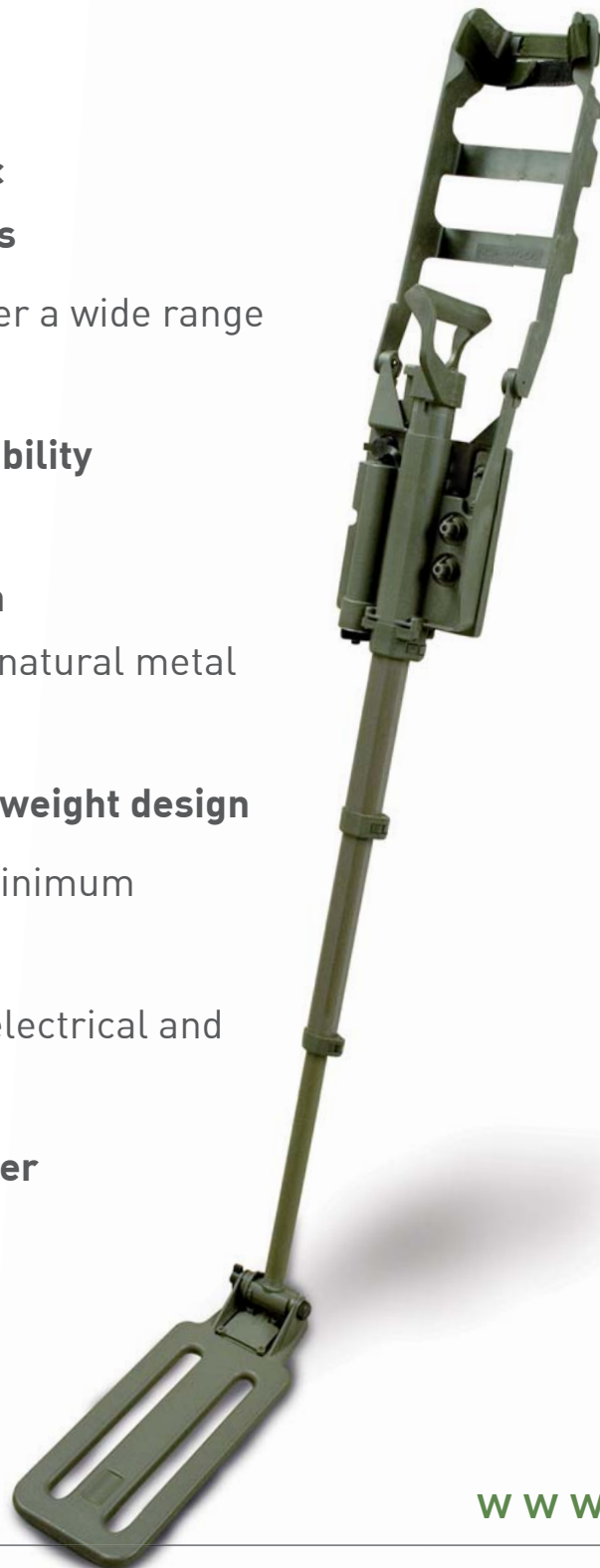
# CEIA CMD

## VERY HIGH PERFORMANCE COMPACT METAL DETECTOR

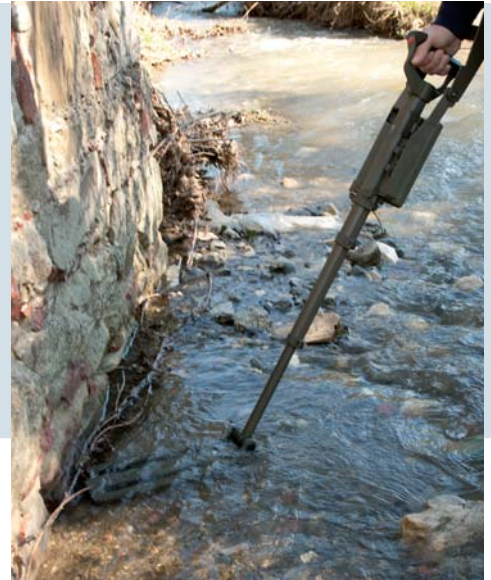


### FEATURE HIGHLIGHTS

- **Detection of all magnetic and non-magnetic metals**
- **Sensitivity adjustable** over a wide range of values
- **High discrimination capability** for adjacent targets
- **Automatic Compensation** for mineralized and high natural metal content soil
- **Balanced, compact, lightweight design**
- **Ease of operation** with minimum training time required
- **Extremely high level** of electrical and mechanical **reliability**
- **Integrated battery charger**



The CEIA CMD is a very high performance, high-sensitivity Compact Metal Detector designed to detect metal targets in all types of terrain



EFFICIENT DETECTION IN ALL TYPES OF TERRAIN

### ONE-PIECE FOLDABLE DESIGN

The Metal Detector comprises a search head, a control unit, a telescopic pole and an elbow support all jointed together in a one-piece design.

The detection head is light and the wiring is designed to be protected from any possible damage.

The compact, highly-portable design allows immediate operational status and ease of transport.

The CEIA CMD incorporates a rapid battery charger (3 hours max.) powered by an electrical mains adapter or via the cigar lighter socket found in vehicles.

### ERGONOMIC OPERATION

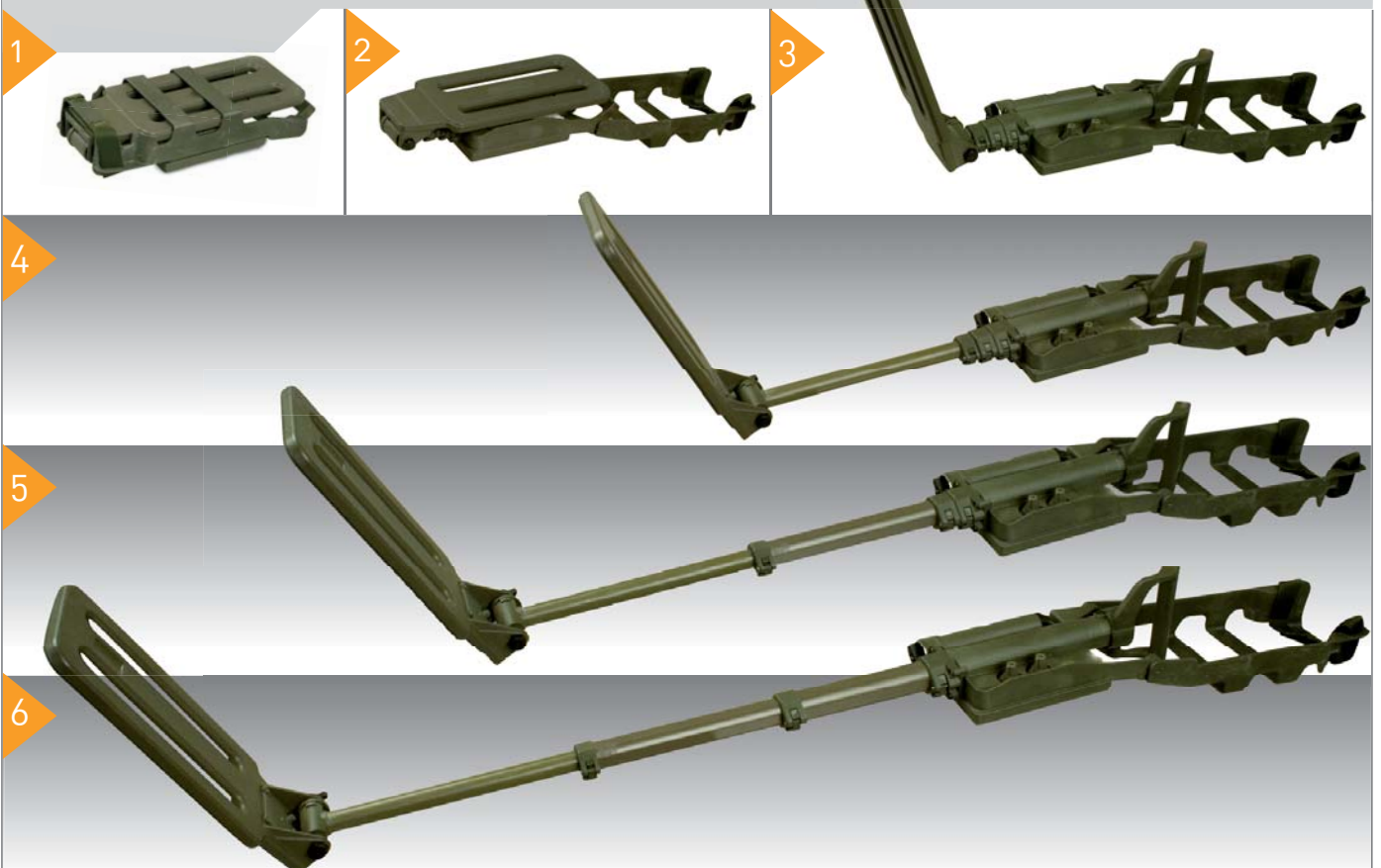
Intentionally designed to be used easily and comfortably in every working condition, the CEIA CMD can be set up for operation in less than twenty seconds.

The equipment stands out due to its compact design, light weight, operational performance and reliability.

The telescopic pole length can be adjusted for use when standing, kneeling or in the prone position.

### MINIMUM SET-UP TIME: LESS THAN TWENTY

### SECONDS





Pinpointing of the metal objects is aided by an evolved system of acoustic modulation and an LED bar indicator



### EXCLUSIVE AUTOMATIC SOIL COMPENSATION SYSTEM

The CEIACMD **does not require any manual calibration**; in addition, optimum sensitivity is ensured over all types of terrain due to CEIA's Exclusive Automatic Soil Compensation System.

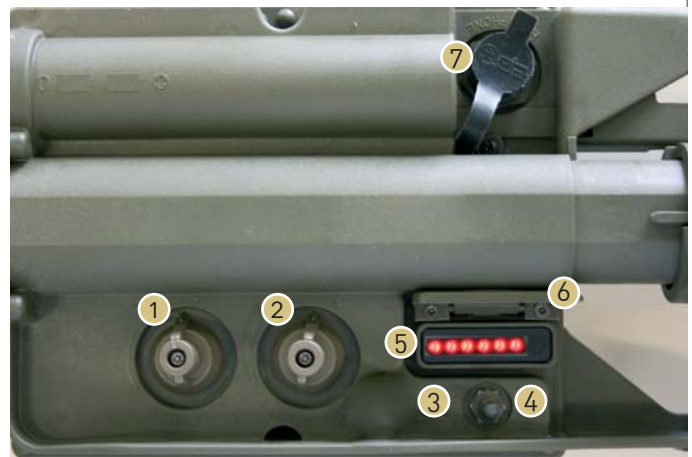
Pinpointing of the metal objects is aided by an evolved system of acoustic modulation and an LED bar indicator, which **allow the position of the detected mass to be established with a high degree of precision**.

If desired, the led bar can be masked with a snap-down cover so as to avoid remote visibility (stealth operation).

### MODERN CONTROL UNIT

The electronics unit is water-resistant and satisfied the most demanding environmental requirements. **All the controls can easily be reached by the operator**:

- 1 volume adjustment
- 2 sensitivity adjustment
- 3 built-in speaker
- 4 main switch and spring actuated reset switch
- 5 luminous bar indicator of signal intensity
- 6 snap-down cover to mask the led bar indicator
- 7 headphone connector - RS-232 interface



### TEST SAMPLE

A reference sample for checking the functional status of the detector is contained in its handle.





The CEIA CMD is manufactured in compliance with the ISO-9001 standard and has been designed to satisfy the most stringent operational requirements

## TRANSPORTATION



- 1 headphone
- 2 hook/clip for attaching headphone to clothing
- 3 instruction manuals
- 4 batteries
- 5 test sample



## TECHNICAL DATA

<b>POWER SUPPLY</b>	Types of batteries (2x), ANSI Standard, type C 1.5V Alkaline (LR14) 1.2V Ni-MH rechargeable
<b>BATTERY LIFE</b>	Battery life at 20°C (standard program after reset): - alkaline batteries: 6 hours continuous operation - Ni-MH (6000 mAh) rechargeable batteries: 8 hours continuous operation  Battery charge indicator  Ni-MH batteries recharging time: 3 hours max. with incorporated battery charger
<b>METAL ALARM</b>	Adjustable sensitivity  Audible alarm with adjustable volume and visual LED display (maskable with a snap-down cover)
<b>DIMENSIONS</b>	<b>Search head:</b> 350 x 140 mm <b>Folded:</b> 387 x 157 x 75 mm <b>Fully extended:</b> 1290 mm <b>Carry bag:</b> 395 x 200 x 110 mm
<b>WEIGHT</b>	<b>Metal Detector</b> (batteries not included): 1,98 kg <b>Carry bag:</b> 0,50 kg <b>Headphone:</b> 0,18 kg <b>Complete set</b> (batteries included): 2,77 kg
<b>ENVIRONMENTAL</b>	<b>Storage temperature:</b> -55 °C to +85 °C <b>Operational temperature:</b> -46 °C to +70 °C  Compliant with the most demanding environmental requirements
<b>LEVEL OF PROTECTION</b>	IP68 (IEC 529)  Carry bag in water resistant synthetic canvas
<b>OPERATIONAL READINESS TIME</b>	Extraction from the case, telescopic pole extension and switching on of the Metal Detector in less than twenty seconds (with batteries already inserted)
<b>OPTIONS/ ACCESSORIES</b>	90-260V~ power supply adapter for the built-in battery charger (cod. 45639)  12/24Vdc power supply cable for the built-in battery charger fitted with a car cigarette lighter plug (cod. 45640)  External loudspeaker (cod. 43676)