



## clearcurrent<sup>®</sup> PRO HX vCell

### High Performance Filtration

CLARCOR Industrial Air's clearcurrent filter business offers extremely high levels of turbine protection in a wide range of environments with its selection of inlet filters. Our 40 years of expertise in gas turbine air intake design has influenced the development of this water-resistant filter. Its high dust-holding capacity helps prolong filter life and significantly lowers operating costs. The filter is designed for low pressure loss to enable improved power output. Available in industry-standard sizes, the PRO HX is suitable for all GT OEM filter houses.

### Key Benefits

- Media provides hydrophobic performance for superior protection in wet environments
- Low pressure loss helps increase power output and/or improve fuel efficiency
- Easy to install and change out to reduce downtime
- Easily disposable by incineration

### PRO – Predictable, Reliable Output

The clearcurrent PRO filter delivers predictable performance while maintaining steady pressure loss. Our vCell reduces both dry and wet contaminants from reaching the turbine blades. The clearcurrent vCell filter is designed to provide maximum protection to gas turbines against moisture, and is both mist and fog resistant, as well as particulate contaminants. The PRO HX vCell provides balanced maintenance costs all while improving your MW output. This unique high efficiency final filter is made with PRO technology. The clearcurrent PRO HX vCell delivers exceptional gas turbine performance across the filter's service life.

### Performance Data

ASHRAE 52.2: 2012 Rating	MERV 15
EN779: 2012 Rating	F9
Rated Airflow	4250 m <sup>3</sup> /h, (2500 CFM)
ASHRAE dust-holding capacity (450 Pa) 3400 m <sup>3</sup> /h	930 g (2.1 lb)
ASHRAE dust-holding capacity (450 Pa) 4250 m <sup>3</sup> /h	635 g (1.4 lb)
Operating Temperature Range	-40°C to 70°C (-40°F to 158°F)

### Filter Facts

Construction	Robust, impact resistance plastic, ABS (Acrylonitrile butadiene styrene)
Gasket	Foam in place polyurethane, continuous, single piece
Dimensions	595 mm H x 595 mm W x 435 mm D (23.4" H x 23.4" W x 17.1" D)
Clean Weight	13.7 kg (30 lb)
Application	Multi stage static or hybrid filtration, available also in reverse flow configuration

For more information, contact your clearcurrent representative at [CLARCOR Industrial Air](#):  
11501 Outlook Street, Suite 100 | Overland Park, KS 66211  
T: +1.800.821.2222 | T: +1.816.356.8400 | F: +1.816.353.1873

3 Omega Park | Alton, GU34 2QE | United Kingdom  
T: +44(0) 1420 541188 | F: +44(0) 1420 541298  
Email: [filtration@clarcor.com](mailto:filtration@clarcor.com)

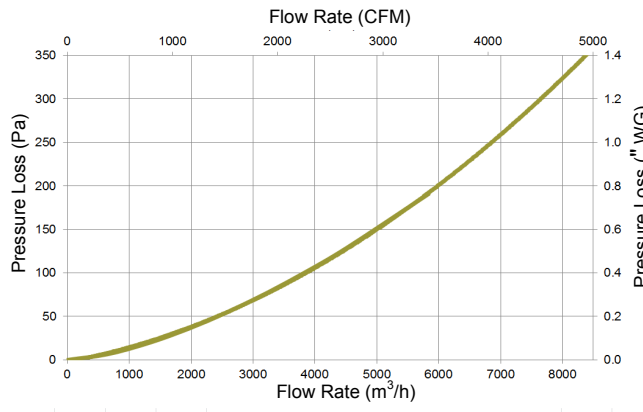


©2015 BHA Altair, LLC. All rights reserved. clearcurrent is a registered trademark of BHA Altair, LLC.

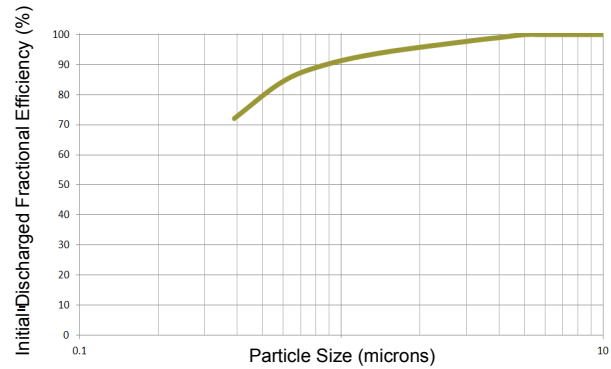
CLEARC012 (02/2015)

## clearcurrent<sup>®</sup> PRO HX vCell

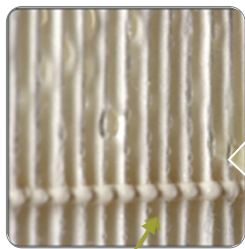
### Pressure Loss



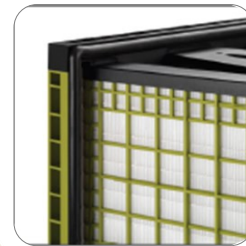
### Initial Fractional Efficiency



### Key Features



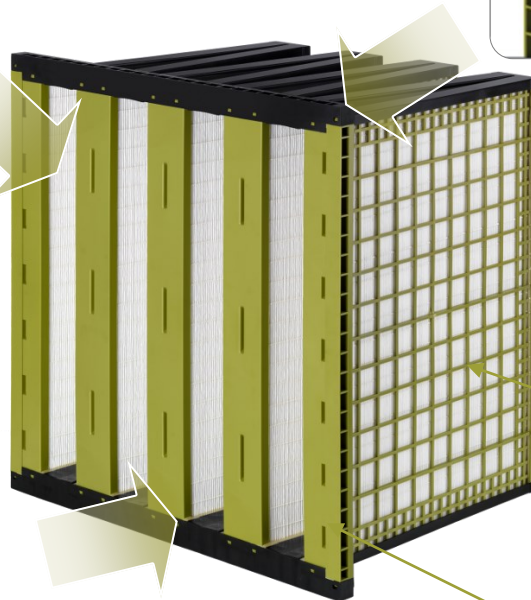
Best in class hydrophobic properties.



Continuous gasket with gasket stop



Fully potted and sealed media packs



Protective grids, ensures wet burst pressure of greater than 25" WG

Robust ABS Frame

For more information, contact your clearcurrent representative at **CLARCOR Industrial Air**:  
 11501 Outlook Street, Suite 100 | Overland Park, KS 66211  
 T: +1.800.821.2222 | T: +1.816.356.8400 | F: +1.816.353.1873

3 Omega Park | Alton, GU34 2QE | United Kingdom  
 T: +44(0) 1420 541188 | F: +44(0) 1420 541298  
 Email: filtration@clarcor.com