



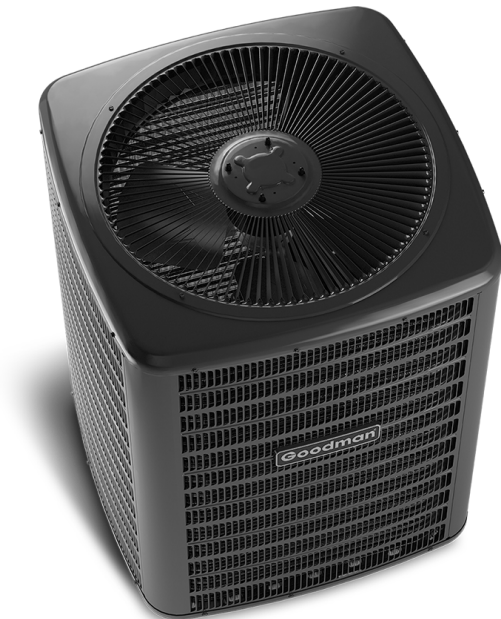
Air Conditioning & Heating

GSZ14

COOLING CAPACITY: 18,000 TO 60,000 BTU/H

HEATING CAPACITY: 18,000 TO 60,000 BTU/H

**ENERGY-EFFICIENT
SPLIT SYSTEM HEAT PUMP
UP TO 15 SEER & 9.0 HSPF
1½ TO 5 TONS**



Contents

Nomenclature.....	2
Product Specifications.....	3
Expanded Cooling Data	5
Expanded Heating Data.....	29
Performance Data	32
AHRI Ratings	34
Wiring Diagram.....	51
Dimensions	52
Accessories	52

Standard Features

- High-efficiency scroll compressor
- SmartShift® technology to ensure quiet reliable defrost
- Factory-installed bi-flow liquid-line filter drier
- Factory-installed suction-line accumulator
- Factory-installed compressor crankcase heater
- Factory-installed high-capacity muffler
- High- and low-pressure switches
- Service valves with sweat connections and easy access to gauge ports
- Copper tube/enhanced aluminum fin coil
- Fully charged for 15' of tubing length
- Contactor with lug connection
- Ground lug connection
- AHRI Certified; ETL Listed

Cabinet Features

- Goodman® brand sound control top design
- Steel louver coil guard
- Heavy-gauge galvanized-steel cabinet
- Attractive Architectural Gray powder-paint finish with 500-hour salt-spray approval
- Top and side maintenance access
- Service ports and controls are accessible while unit is operating
- When properly anchored, meets the 2010 Florida Building Code unit integrity requirements for hurricane-type winds (Anchor bracket kits available.)






Proper sizing and installation of equipment is critical to achieving optimal performance. Split system air conditioners and heat pumps must be matched with appropriate coil components to meet ENERGY STAR criteria. Ask your contractor for details or visit www.energystar.gov.



* Complete warranty details available from your local dealer or at www.goodmanmfg.com. To receive the 10-Year Parts Limited Warranty, online registration must be completed within 60 days of installation. Online registration is not required in California or Quebec.

	G	S	Z	14	036	1	AA	
	1	2	3	4,5	6,7,8	9	10,11	
Brand	G Goodman® Brand						Engineering *	
							Major & Minor revisions * Not used for inventory control.	
Product Category	S Split System							Electrical
								1 - 208/230 V, 1 Phase, 60 Hz
Unit Type	X Condenser R-410A							Nominal Capacity
	Z Heat Pump R-410A							018 - 1½ tons 042 3½ Tons
								024 - 2 tons 048 4 Tons
								030 - 2½ tons 060 5 Tons
								036 - 3 tons
Efficiency	13 13 SEER 16 16 SEER							
	14 14 SEER 18 18 SEER							

	GSZ14 0181K*	GSZ14 0191A*	GSZ14 0241K*	GSZ14 0251A*	GSZ14 0301K*	GSZ14 0311A*
NOMINAL CAPACITIES						
Cooling (BTU/h)	18,000	17,400	24,000	23,200	30,000	28,000
Heating (BTU/h)	18,000	18,000	24,000	23,200	30,000	31,000
Decibels	72	72	72	72	74	75
COMPRESSOR						
RLA	9.0	9.0	10.9	10.9	13.5	13.5
LRA	47.5	47.5	62.9	62.9	72.5	72.5
Type	Scroll	Scroll	Scroll	Scroll	Scroll	Scroll
CONDENSER FAN MOTOR						
Horsepower	1/6	1/6	1/6	1/6	1/6	1/6
FLA	0.95	1.1	0.95	1.1	0.95	1.10
REFRIGERATION SYSTEM						
Refrigerant Line Size ¹						
Liquid Line Size ("O.D.)	3/8"	3/8"	3/8"	3/8"	3/8"	3/8"
Suction Line Size ("O.D.)	3/4"	3/4"	3/4"	3/4"	3/4"	3/4"
Refrigerant Connection Size						
Liquid Valve Size ("O.D.)	3/8"	3/8"	3/8"	3/8"	3/8"	3/8"
Suction Valve Size ("O.D.)	3/4"	3/4"	3/4"	3/4"	3/4"	7/8"
Standard Line Set Length (max. feet)	80	80	80	80	80	80
Long Line Set Length (max. feet) ²						
Equivalent Length	250	250	250	250	250	250
Linear Length	200	200	200	200	200	200
Vertical Length (outdoor below indoor)	80	80	80	80	80	80
Vertical Length (outdoor above indoor)	80	200	80	200	80	200
Valve Connection Type	Sweat	Sweat	Sweat	Sweat	Sweat	Sweat
Refrigerant Charge	92	92	92	92	95	160
ELECTRICAL DATA						
Volts/Phase (60 Hz)	208-230/1	208-230/1	208-230/1	208-230/1	208-230/1	208-230/1
Minimum Circuit Ampacity ³	12.2	12.4	14.6	14.7	17.8	17.9
Max. Overcurrent Protection ⁴	20	20	25	25	30	30
Min / Max Volts	197 / 253	197 / 253	197 / 253	197 / 253	197 / 253	197/253
Electrical Conduit Size	1/2" or 3/4"	1/2" or 3/4"	1/2" or 3/4"	1/2" or 3/4"	1/2" or 3/4"	1/2" or 3/4"
UNIT WEIGHTS						
Equipment Weight (lbs.)	143	143	143	143	171	186
Ship Weight (lbs)	154	154	154	154	182	206
ENERGY STAR® CERTIFIED ^						
		NO		NO		NO

^ Energy Star Notes

Proper sizing and installation of equipment is critical to achieving optimal performance. Split system air conditioners and heat pumps must be matched with appropriate coil components to meet ENERGY STAR criteria. Ask your contractor for details or visit www.energystar.gov.

The www.energystar.gov website provides up-to-date system combinations certified to meet ENERGY STAR requirements. See Page 24 for all ENERGY STAR certified combinations as of this document's revision date.

¹ Tested and rated in accordance with ARI Standard 210/240

² Reference TP-107* for additional application requirements




³ Wire size should be determined in accordance with National Electrical Codes; extensive wire runs will require larger wire sizes

⁴ Must use time-delay fuses or HACR-type circuit breakers of the same size as noted.

NOTES

- Always check the S&R plate for electrical data on the unit being installed.
- Installer will need to supply 3/8" to 1 1/8" adapters for suction line connections.
- Unit is charged with refrigerant for 15' of 3/8" liquid line. System charge must be adjusted per Installation Instructions Final Charge Procedure.
- Installation of these units may require the specified TXV Kit to be installed on the indoor coil. THE SPECIFIED TXV IS DETERMINED BY THE OUTDOOR UNIT NOT THE INDOOR COIL.

PRODUCT SPECIFICATIONS (CONT.)

	GSZ14 0361K*	GSZ14 0371A*	GSZ14 0421K*	GSZ14 0481K*	GSZ14 0491K*	GSZ14 0601K*
NOMINAL CAPACITIES						
Cooling (BTU/h)	36,000	33,000	42,000	48,000	48,000	60,000
Heating (BTU/h)	36,000	34,000	42,000	48,000	48,000	60,000
Decibels	74	73	75	75	76	76
COMPRESSOR						
RLA	15.4	14.1	16.7	18.5	19.9	26.4
LRA	83.9	72.2	109.0	124.0	109.0	134.0
Type	Scroll	Scroll	Scroll	Scroll	Scroll	Scroll
CONDENSER FAN MOTOR						
Horsepower	1/6	1/4	1/6	1/4	1/6	1/4
FLA	0.95	1.50	1.1	1.5	1.1	1.5
REFRIGERATION SYSTEM						
Refrigerant Line Size ¹						
Liquid Line Size ("O.D.)	3/8"	3/8"	3/8"	3/8"	3/8"	3/8"
Suction Line Size ("O.D.)	7/8"	7/8"	1 1/8"	1 1/8"	1 1/8"	1 1/8"
Refrigerant Connection Size						
Liquid Valve Size ("O.D.)	3/8"	3/8"	3/8"	3/8"	3/8"	3/8"
Suction Valve Size ("O.D.)	3/4"	7/8"	7/8"	3/4"	7/8"	7/8"
Standard Line Set Length (max. feet)	80	80	80	80	80	80
Long Line Set Length (max. feet) ²						
Equivalent Length	250	250	250	250	250	250
Linear Length	200	200	200	200	200	200
Vertical Length (outdoor below indoor)	80	80	80	80	80	80
Vertical Length (outdoor above indoor)	80	200	80	80	80	80
Valve Connection Type	Sweat	Sweat	Sweat	Sweat	Sweat	Sweat
Refrigerant Charge	112	175	140	133	187	205
ELECTRICAL DATA						
Volts/Phase (60 Hz)	208-230/1	208-230/1	208-230/1	208-230/1	208-230/1	208-230/1
Minimum Circuit Ampacity ³	20.2	19.1	22.0	24.6	26.0	34.5
Max. Overcurrent Protection ⁴	35	30	35	40	45	60
Min / Max Volts	197 / 253	197/253	197 / 253	197 / 253	197 / 253	197 / 253
Electrical Conduit Size	1/2" or 3/4"	1/2" or 3/4"	1/2" or 3/4"	1/2" or 3/4"	1/2" or 3/4"	1/2" or 3/4"
UNIT WEIGHTS						
Equipment Weight (lbs.)	173	220	191	226	273	277
Ship Weight (lbs)	184	240	207	237	288	292
ENERGY STAR® CERTIFIED ^						
		NO			NO	NO

^ Energy Star Notes

Proper sizing and installation of equipment is critical to achieving optimal performance. Split system air conditioners and heat pumps must be matched with appropriate coil components to meet ENERGY STAR criteria. Ask your contractor for details or visit www.energystar.gov.

The www.energystar.gov website provides up-to-date system combinations certified to meet ENERGY STAR requirements. See Page 24 for all ENERGY STAR certified combinations as of this document's revision date.

¹ Tested and rated in accordance with ARI Standard 210/240

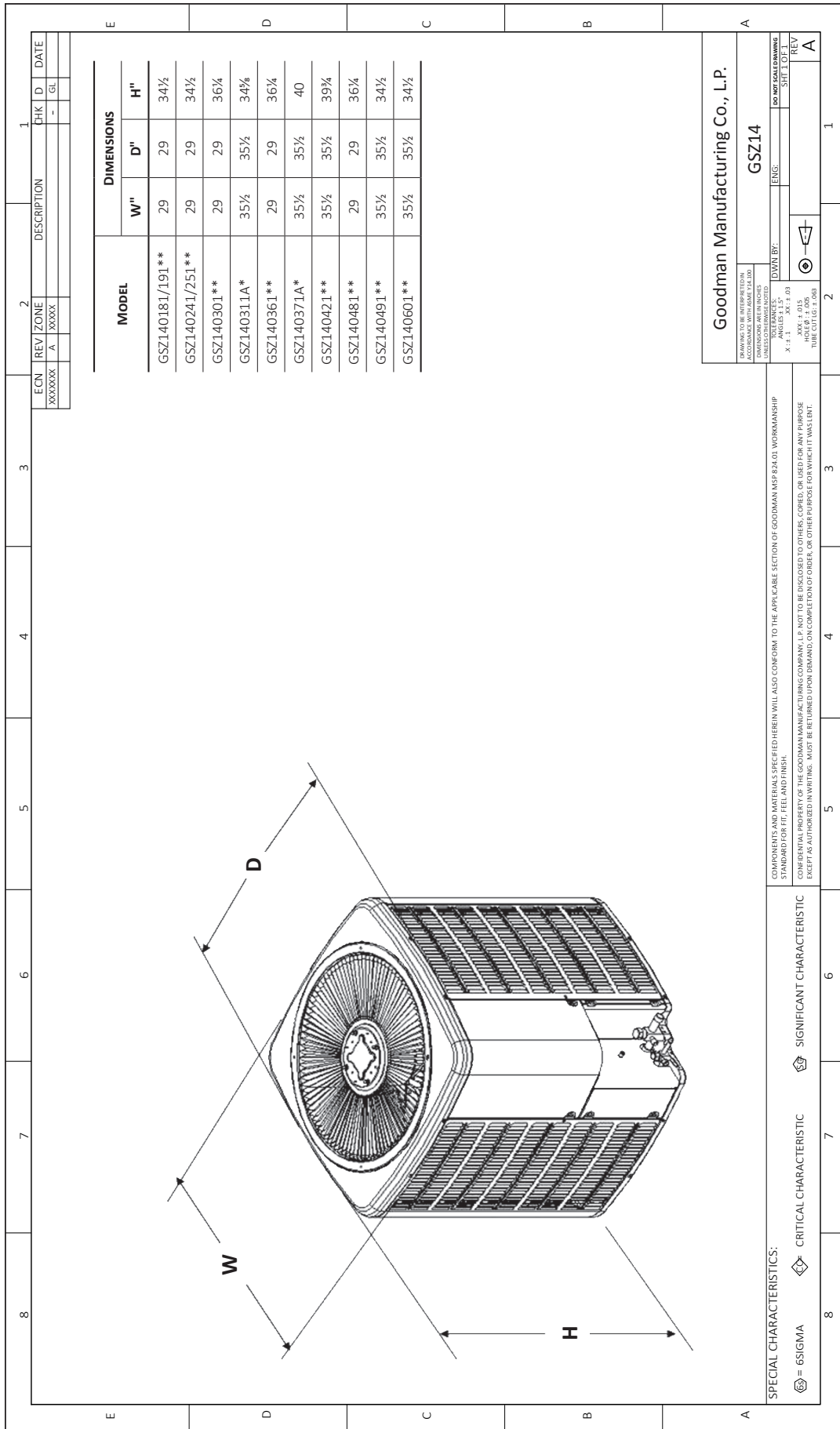
² Reference TP-107* for additional application requirements

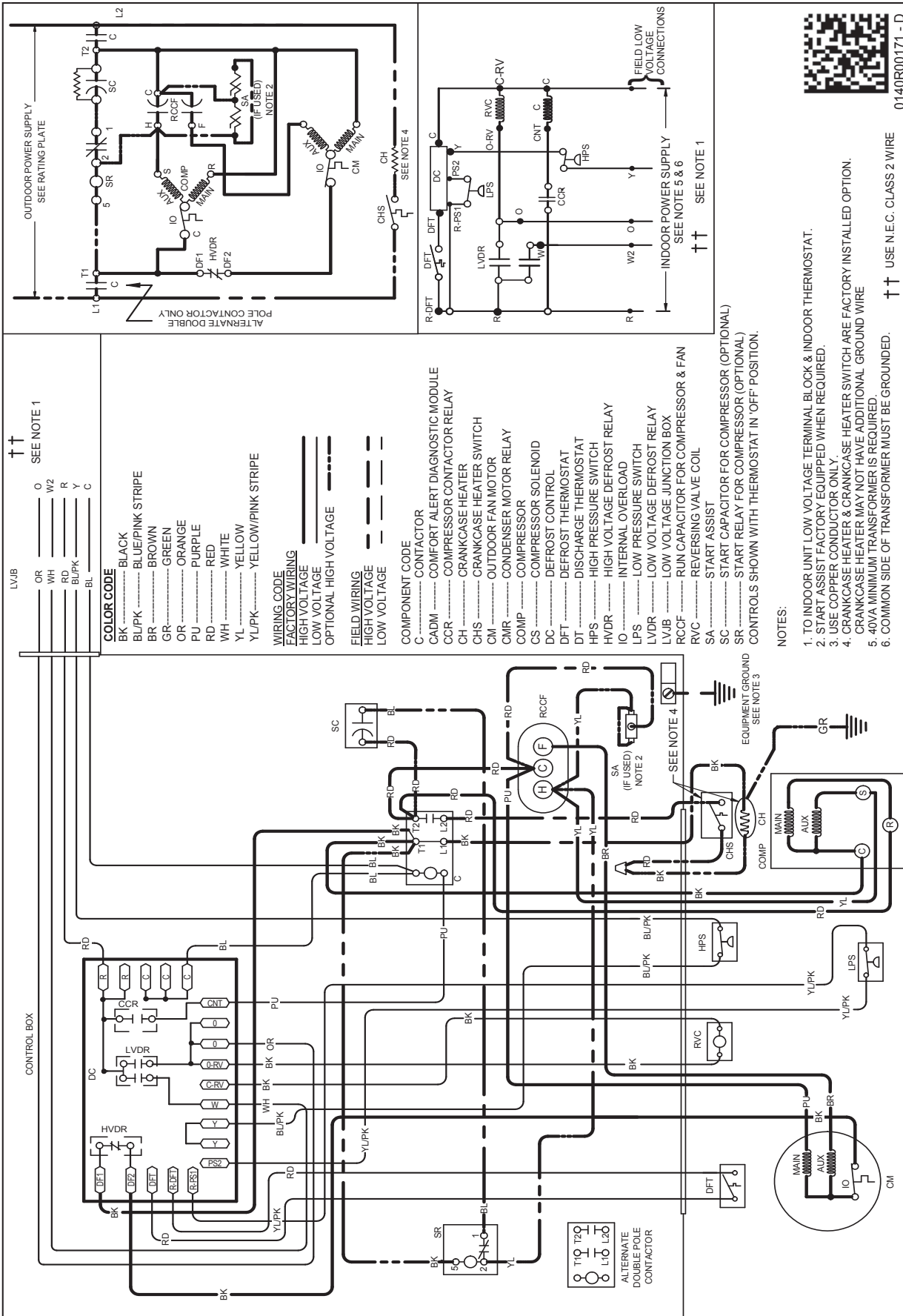
³ Wire size should be determined in accordance with National Electrical Codes; extensive wire runs will require larger wire sizes

⁴ Must use time-delay fuses or HACR-type circuit breakers of the same size as noted.

NOTES

- Always check the S&R plate for electrical data on the unit being installed.
- Installer will need to supply 7/8" to 1 1/8" adapters for suction line connections.
- Unit is charged with refrigerant for 15' of 3/8" liquid line. System charge must be adjusted per Installation Instructions Final Charge Procedure.
- Installation of these units requires the specified TXV Kit to be installed on the indoor coil. THE SPECIFIED TXV IS DETERMINED BY THE OUTDOOR UNIT NOT THE INDOOR COIL.





0140R00171 - D

Wiring is subject to change. Always refer to the wiring diagram or the unit for the most up-to-date wiring.

WARNING

High Voltage: Disconnect all power before servicing or installing this unit. Multiple power sources may be present. Failure to do so may cause property damage, personal injury, or death.