

WEIGH MODULES

RL9000TWM-HT

Tank, Hopper and Vessel Weigh Module



Picture is a representation of actual product

The RL9000TWM-HT is the latest addition to the popular RL9000TWM Series weigh module. The RL9000TWM-HT is a high temperature version that is designed to operate in temperatures up to 400°F.

The integral 25 ft of FEP cable complements the RL9000TWM-HT weigh module.

Load Cell Specifications

Full Scale Output:

3 (± 0.1%) mV/V

Bridge Resistance:

700 ohms

Material/Finish:

Stainless steel*

Safe Overload:

150% full scale

Rated Excitation:

5-10VDC

Operating Temperature:

0° F to 400° F

Insulation Resistance:

5,000 megohms

Non-linearity:

0.05% FS

Non-repeatability:

0.02% FS

Seal Type:

Welded-seal IP67

Cable Length:

25 ft FEP jacket

Cable Color Code:

Green+ Excitation
 Black.....- Excitation
 White+ Signal
 Red- Signal

Warranty:

Two-year limited warranty

Standard Features

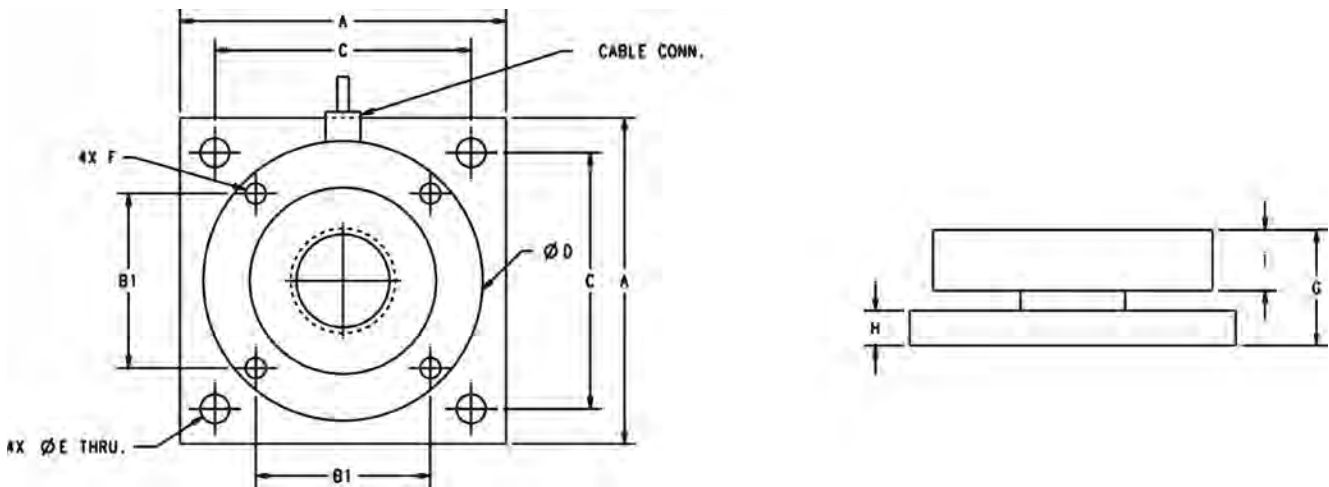
- Capacities: 1,000 lb-50,000 lb
- Very low profile design
- 3 mV/V output
- Self-centering
- Self-checking assembly
- Offers 100% side load, 100% uplift and 150% safe load and 300% ultimate overload protection
- Stainless steel construction
- Welded-seal
- Weighs accurately with as much as a 3° on-parallel load
- Complete with 25 ft FEP cable

Optional Features

- Stainless steel top plates
- Higher capacities available upon request

Applications

- Tank, hopper, or vessel weighing
- High temperature applications



Dimensions

Rated Capacity	A	B1	C	D	E	F	G	h	i	Conduit Adapter
lb/in										
1,000 lb - 10,000 lb	4.00	2.00	3.25	3.50	0.40	3/8-16NC	1.35	0.375	0.75	—
15,000 lb	4.00	2.00	3.25	3.50	0.40	3/8-16NC	1.60	0.625	0.75	—
20,000 lb - 50,000 lb	7.00	3.75	5.50	6.00	0.63	1/2-13NC	2.48	0.750	1.30	1/2-14NPT

Order Information

Load Rating (per module)	Part#	Price
Single Module		
1,000 lb	117050	\$1,025.00
2,500 lb	117051	\$1,025.00
5,000 lb	117052	\$1,025.00
10,000 lb	117140	\$1,025.00
15,000 lb	117053	\$1,025.00
20,000 lb	117054	\$1,725.00
25,000 lb	117055	\$1,725.00
35,000 lb	117056	\$1,725.00
50,000 lb	117057	\$1,725.00
Top Plates (Stainless Steel) with bolts		
1,000 lb-15,000 lb	91207	\$150.00
20,000 lb-50,000 lb	91210	\$325.00
Top Plates (Mild Steel) with bolts		
1,000 lb-15,000 lb	124758	\$75.00
20,000 lb-50,000 lb	125141	\$145.00