

WEIGH MODULES

RL2200 Series

Tank, Hopper and Vessel Weighing Assembly



Available in configurations with three or four mounting assemblies.
Picture is a representation of actual product

The RL2200 Series mounts are ideal for use in tank, hopper, vessel and many other applications. The low-profile design allows for economical solutions in a competitive marketplace. This rugged, high-precision mount is designed for easy installation and does not require check rods or other stabilizing hardware. The RL2200 mount has the added feature of self centering, allowing for side loads without sacrificing performance.

Load Cell Specifications

Full Scale Output:

4.0 mV/V, 2.0 mV/V (2,500 lb)

Bridge Resistance:

350 ohms nominal

Material/Finish:

High-alloy steel, painted

Safe Overload:

150% full scale

Rated Excitation:

5-10 VDC (20 V maximum)

Nonlinearity:

0.05% full scale

Hysteresis:

0.03% full scale

Temperature:

Compensated range: 15° F to 115° F (-9° C to 46° C)

Insulation Resistance:

5,000 megohms

Seal Type:

Environmentally sealed

Cable Length*:

30 ft (9.1 m)

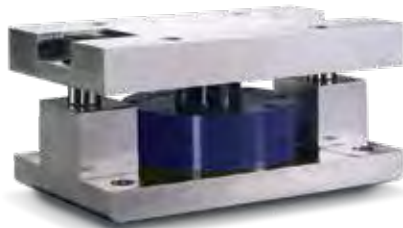
Cable Color Code:

Red+ Excitation
 Black.....- Excitation
 White+ Signal
 Green.....- Signal

Warranty:

Two-year limited warranty

*Compression load application



Assembly with integral RL2200 compression disk load cell.

Standard Features

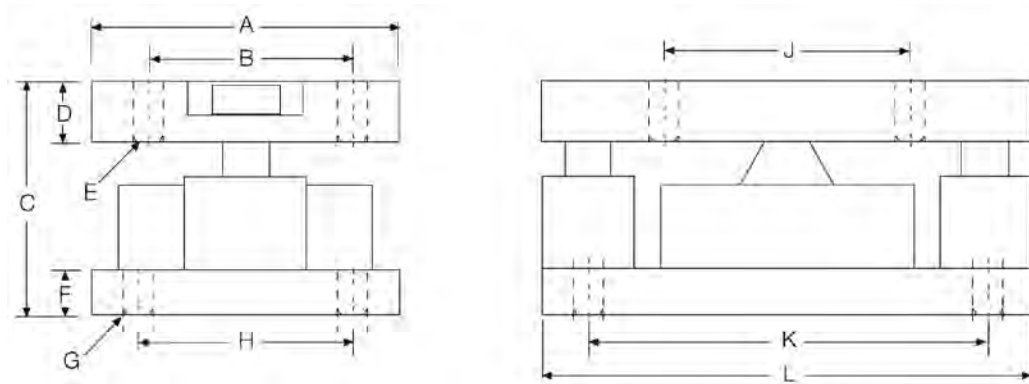
- Capacities: 2,500 lb-50,000 lb (1,134 kg-22,680 kg)
- Low-profile design
- High 4 mV/V output (2 mV/V, 2,500 lb)
- Self-centering in all directions—able to withstand excessive side loads
- Self-checking assembly

Applications

- Tank, hopper or vessel weighing
- Belt or roller conveyors
- Scale platforms and screw feeders

Complete Kit Includes

- One JB4SS NEMA Type 4X stainless steel signal trim junction box
- Three or four RL2200 high-alloy, zinc-plated steel mounting assemblies
- Three or four RL2200 compression disk load cells
- 25 ft of our hostile environment EL147HE SURVIVOR® load cell cable



Dimensions

Rated Capacity	A	B	C	D	E	F	G	H	J	K	L
lb/in											
2,500-10,000	5.00	3.50	4.00	1.00	0.52	1.0	0.52	3.50	4.00	6.50	8.00
25,000-50,000	6.00	4.50	5.00	1.25	0.78	1.0	0.78	4.50	5.00	7.75	10.0
kg/mm											
1,134.0-4,536.0	127.0	88.9	101.6	25.4	13.2	19.0	13.2	88.9	101.6	165.1	203.2
11,340.0-22,679.6	152.4	114.3	127.0	31.7	19.8	25.4	19.8	114.3	127.0	196.8	254.0

Order Information

Load Rating (Per Module)	Part#	Price	
Single Module			
2,500 lb	1,134 kg	76656	\$1,600.00
5,000 lb	2,268 kg	45849	\$1,600.00
10,000 lb	4,536 kg	45848	\$1,600.00
25,000 lb	11,340 kg	45847	\$2,150.00
50,000 lb	22,680 kg	45846	\$2,150.00
3-Module Kit			
2,500 lb	1,134 kg	76897	\$4,775.00
5,000 lb	2,268 kg	42811	\$4,775.00
10,000 lb	4,536 kg	42812	\$4,775.00
25,000 lb	11,340 kg	42813	\$6,175.00
50,000 lb	22,680 kg	42814	\$6,175.00
4-Module Kit			
2,500 lb	1,134 kg	76898	\$6,315.00
5,000 lb	2,268 kg	42815	\$6,315.00
10,000 lb	4,536 kg	42816	\$6,315.00
25,000 lb	11,340 kg	42817	\$7,315.00
50,000 lb	22,680 kg	42818	\$7,315.00

Replacement Load Cell Order Information

Load Rating (Per Module)	Part#	Price	
2,500 lb	1,134 kg	76654	\$1,250.00
5,000 lb	2,268 kg	45708	\$1,250.00
10,000 lb	4,536 kg	45709	\$1,250.00
25,000 lb	11,340 kg	45710	\$1,575.00
50,000 lb	22,680 kg	45711	\$1,575.00