

Paramounts® HS

Hermetically Sealed, Mild Steel, Light- to Medium-capacity Tank Weighing Systems

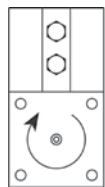


Available in configurations with three or four mounting assemblies.
Picture is a representation of actual product

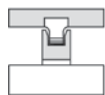
The Paramounts tank weighing system consists of one fixed-pin mount which allows only the top plate to rotate, one side-stop mount which allows the top plate to slide along the cell only, and one or more free-sliding mount(s) which allows the top plate to slide freely in all directions. This system provides self checking while maintaining unparalleled system accuracy.



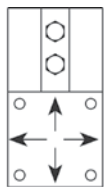
Free-sliding module with Flintec SB4 bending beam load cell.



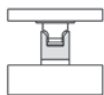
A: FIXED PIN



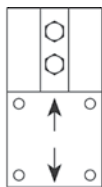
Fixed-Pin Mount



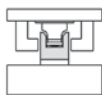
B: FREE SLIDING



Free-Sliding Mount



C: SIDE STOP



Side-Stop Mount

Standard Features

- Capacities (per module): 520 lb-22,500 lb (2.3 kN/102.1 kg-100 kN/10,205.9 kg)
- Unique design allows for thermal expansion/contraction
- Jacking screw allows empty vessel to be lifted clear of load cell for maintenance
- Unique blind load hole eliminates unwanted side and eccentric loads
- Vessel is free to slide laterally on PTFE-coated surfaces
- Load cell outputs are matched to $\pm 0.07\%$, allowing replacement without further calibration

Applications

- Light- to medium-capacity tanks and hoppers
- Mixers and blenders
- Process measurement and control

Complete Kit Includes

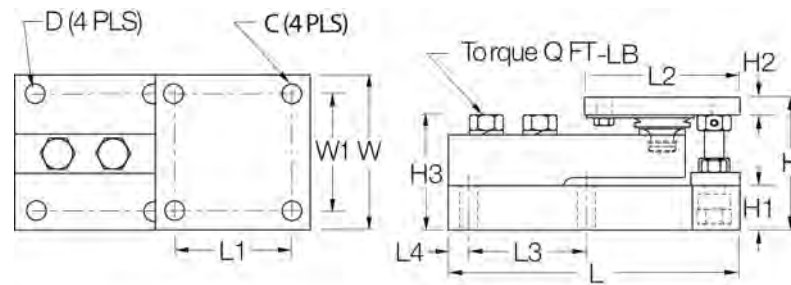
- One JB4SS NEMA Type 4X stainless steel signal trim junction box
- One fixed-pin module, one side-stop module, and one or two free-sliding assemblies. Each module is complete with a Flintec® SB4 or SB10 (520 lb) stainless steel hermetically sealed load cell.
- 25 ft of our hostile environment EL147HE SURVIVOR® load cell cable

Optional Features

- NTEP Certified load cells available: Capacities 1,125 lb-11,250 lb

Load Cell Certifications





Dimensions

Rated Capacity	C	D	H	H1	*H2	**H2	H3	L	L1	L2	L3	L4	W	W1	Q (FT- LB)	
lb/in																
520	(2.3 kN)	0.375	0.437	3.49	1.00	0.50	0.75	2.98	7.51	3.00	4.00	3.00	0.50	4.00	3.00	65.00
1,125-5,200	(5 kN-23 kN)	0.437	0.437	3.58	1.25	0.50	0.75	3.06	7.51	3.00	4.00	3.00	0.50	4.00	3.00	65.00
11,250	(50 kN)	0.562	0.562	4.66	1.50	0.62	1.00	4.09	9.19	3.87	5.00	3.87	0.56	5.00	3.87	295.00
22,500	(100 kN)	0.688	0.688	6.41	2.00	0.75	1.25	5.73	11.46	4.75	6.00	4.75	0.69	6.00	4.75	515.00
kg/mm																
236.1		9.5	11.1	88.6	25.4	12.7	19.1	75.7	190.8	76.2	101.6	76.2	12.7	101.6	76.2	—
510.8-2,360.0		11.1	11.1	90.9	31.8	12.7	19.1	77.7	190.8	76.2	101.6	76.2	12.7	101.6	76.2	—
5,107.5		14.3	14.3	118.4	38.1	15.7	25.4	103.9	233.4	98.3	127.0	98.3	14.2	127.0	98.3	—
10,215.0		17.5	17.5	162.8	50.8	19.1	31.8	145.5	291.1	120.7	152.4	120.7	17.5	152.4	120.7	—

Order Information

Load Rating (Per Module)	Part#	Price	
NTEP Certified 3-Module Kit			
1,125 lb	5 kN/510.8 kg	29871	\$2,795.00
2,250 lb	10 kN/1,021.5 kg	29872	\$2,795.00
5,200 lb	23 kN/2,360.8 kg	29873	\$2,795.00
11,250 lb	50 kN/5,107.5 kg	29874	\$3,400.00
NTEP Certified 4-Module Kit			
1,125 lb	5 kN/510.8 kg	29875	\$3,795.00
2,250 lb	10 kN/1,021.5 kg	29876	\$3,795.00
5,200 lb	23 kN/2,360.8 kg	29877	\$3,795.00
11,250 lb	50 kN/5,107.5 kg	29878	\$4,295.00

* Side-stop and free-sliding units

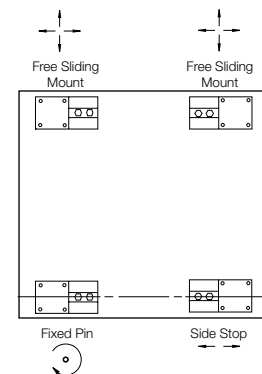
** Fixed-pin units

kN = Kilonewtons 1 kN = 224.8089 lb

Order Information

Load Rating (Per Module)	Part#	Price	
Non-NTEP Certified 3-Module Kit			
520 lb	2.3 kN/236.1 kg	38205	\$3,595.00
1,125 lb	5 kN/510.8 kg	17977	\$2,695.00
2,250 lb	10 kN/1,021.5 kg	17978	\$2,695.00
5,200 lb	23 kN/2,360.8 kg	17979	\$2,695.00
11,250 lb	50 kN/5,107.5 kg	17980	\$3,295.00
22,500 lb	100 kN/10,215.0 kg	17981	\$4,195.00
Non-NTEP Certified 4-Module Kit			
520 lb	2.3 kN/236.1 kg	38206	\$4,795.00
1,125 lb	5 kN/510.8 kg	17984	\$3,525.00
2,250 lb	10 kN/1,021.5 kg	17985	\$3,525.00
5,200 lb	23 kN/2,360.8 kg	17986	\$3,525.00
11,250 lb	50 kN/5,107.5 kg	17987	\$4,095.00
22,500 lb	100 kN/10,215.0 kg	17988	\$5,095.00
**Conduit adapter		17703	\$40.00

**1/2-14 NPT



VESSEL ARRANGEMENT

When arranged as illustrated, the vessel is fixed at one corner but is able to slide freely as indicated. This ensures that there is minimal side loading on the cells and at the same time the vessel is self-checking. The unique, patented blind load hole technology used in these mounts introduces the load at the neutral axis of the load cell which helps minimize the effects of side loads.