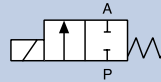


# Plunger Operated 2/2 Way Solenoid Valve

0255

## NPT 1/4" - NPT 3/8", 0-232 PSI

- Fluid temperature to 356 °F
- Integrated metallic body seal
- Wear resistant stainless steel seat



Shown with 2508 plug

High performance plunger operated, direct-acting solenoid valve with integrated metallic body seal and wear resistant stainless steel seat. Three way (Type 0355), high pressure (1470 PSI), and high temperature (482 °F) versions are also available.

### Technical Data

<b>Pressure range</b>	0-232 PSI, Max.
<b>Temperature media</b>	-40 °F ... +356 °F
<b>Ambient temperature</b>	131 °F, Max.
<b>Body material</b>	Brass, stainless steel
<b>Seal material</b>	PTFE
<b>Coil material</b>	Epoxy (Class H)
<b>Power consumption</b>	DC: 16 W, AC: 35-40 VA (inrush), 16/10 VA (hold)
<b>Protection class</b>	IP65
<b>Electrical Connection</b>	2509 cable plug Form A (included)

### Options

- CSA/UR with 2508 conduit plug
- Cables plug with LED and/or varistor
- 1/2" body connection
- FM Class 1 Div 2
- UL listed version

### Ordering Chart

Port connection [inch]	Orifice [mm]	Cv	Pressure range		Material Seal	Item no. Voltage/Frequency [V/Hz]			
			AC [PSI]	DC [PSI]		24/DC	24/60	120/60	240/60
<b>Brass body</b>									
NPT 1/4	3	0.29	232	145	PTFE	457 930	98106001	457 955	98106003
NPT 3/8	3	0.29	232	145	PTFE	92708665	98106010	98103383	98101951
NPT 1/4	4	0.58	145	58	PTFE	98106007	98102369	98101211	98102598
NPT 3/8	4	0.58	145	58	PTFE	98106011	98106012	452 890	98106014
NPT 1/4	6	0.93	55	14	PTFE	98100979	452 905	452 906	455 100
NPT 3/8	6	0.93	55	14	PTFE	98106015	98101571	454 181	98106016
<b>Stainless steel body</b>									
NPT 1/4	3	0.29	232	145	PTFE	98106004	98106005	452 886	98106006
NPT 1/4	4	0.58	145	58	PTFE	457 972	98106008	452 894	98106009
NPT 1/4	6	0.93	55	14	PTFE	98101693	98104267	452 909	455 101

### Envelope Dimensions [inch] (see datasheet for details)

2509 cable plug Form A included (see page 30)

Size	A	B	C
1/4"	2.93	1.79	4.13
1/2"	1.81	1.79	4.27