

**Specifications:**

**Cable Fittings:**

- (4) PG7 0.118-0.255 strain relief
- (2) PG11 0.197-0.394 strain relief
- (1) PreVent breather vent

**Enclosure:**

Stainless steel NEMA Type 4X

**Connectors:**

Spring clamp screwless, 12-28 AWG

**Trimming:**

Individual cell, excitation trim

**Potentiometers:**

100 ohm, 25 turn cermet

**Circuit Board:**

3.8 in x 2.3 in (96.5 mm x 58.4 mm), with conformal coating

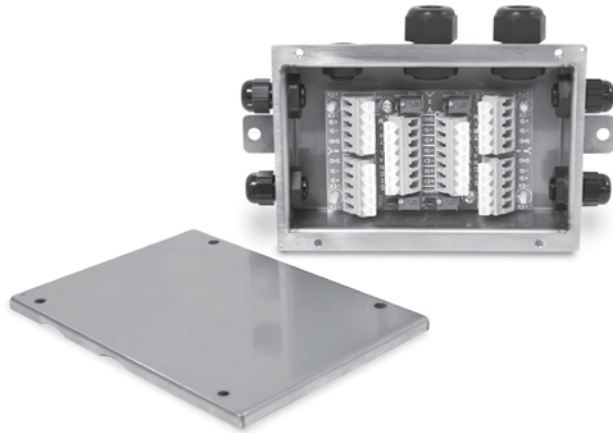
**Warranty:**

One-year limited warranty

**Applications:**

- Floor, tank, hopper scales

**Approvals**



**Standard Features:**

- Stainless steel, NEMA Type 4X enclosure
- Jumpers to enable trimming
- PreVent™ breather vent
- Conformal coated circuit board
- Number of cells: 2, 3 or 4 single cells
- Expansion port

**Part Number/Price**

Part #	Description	Price
91779	JB4ES excitation trim junction box	\$235.00
89446	Board only	\$150.00
165271	Enclosure only (Includes cord grip and filter)	\$115.00

*Note: Do not mix junction box models or use other brands of junction boxes with Rice Lake junction boxes. There is a risk of system instability.*

