

**RL2100 HE**

Heavy-capacity Weigh Modules



Picture is a representation of actual product

Incorporating an articulating load plate, hardened load pin and double-ended beam load cell into one simple design, the RL2100HE tolerates eccentric loads and side loads of up to 100 percent of capacity. The RL2100 HE comes standard with NTEP Certified, 1:5000 division Class III L load cells, yielding up to 0.02 percent total error. An integral conduit adapter offers added washdown protection. These standard features give the RL2100 HE accuracy and dependability in one heavyweight package. The simple load introduction and load cell design provides consistent accuracy in washdown applications, making the RL2100 HE ideal for high-capacity hostile environments.

### Standard Features

- All stainless steel construction
- Welded seal, stainless steel load cells, IP67, guaranteed waterproof
- NTEP Certified load cells, 5000d, Class III L/10,000d, Class III L multiple cell
- Bolt-in-place design; module bolts directly to tank leg without requiring additional load buttons or mounting plates
- Self-checking design
- Two-year limited warranty

### Applications

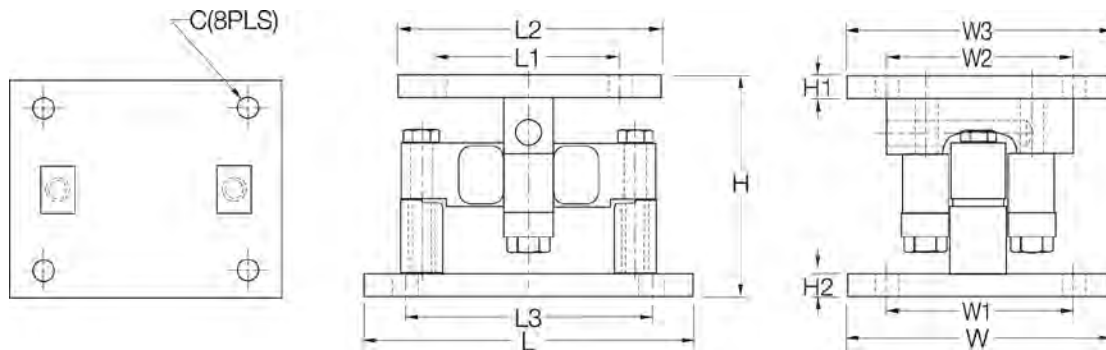
- Heavy-capacity tanks, blenders, reactors and bulk inventory management
- Petroleum refining process control
- Blending/batching

### Complete Kit Includes

- One JB4SS NEMA Type 4X stainless steel signal-trim junction box
- Three or four RL2100HE stainless steel compression mounts
- Three or four RL75060S stainless steel, welded seal double-ended beam load cells
- 25 ft of our hostile environment EL147HE SURVIVOR® load cell cable

### Load Cell Certifications





### Dimensions

Rated Capacity	C	H	H1	H2	L	L1	L2	L3	W	W1	W2	W3
<b>lb/in</b>												
20,000-25,000	0.78	6.85	0.75	0.75	10.00	6.00	8.00	7.50	8.00	6.00	6.00	8.00
35,000-100,000	1.13	9.42	1.00	1.00	16.00	6.50	9.00	11.50	10.00	7.50	6.50	9.00
<b>kg/mm</b>												
9,071.9-11,339.8	19.8	174.0	19.1	19.1	254.0	152.4	203.2	190.5	203.2	152.4	152.4	203.2
15,875.7-45,359.2	28.7	239.3	25.4	25.4	355.6	165.1	228.6	292.1	254.0	190.5	165.1	228.6

### Order Information

Load Rating (Per Module)	Part#	Price	
<b>Single Module (Includes Load Cell)</b>			
20,000 lb	9,071.8 kg	<b>32951</b>	\$1,495.00
25,000 lb	11,339.8 kg	<b>65541</b>	\$1,495.00
35,000 lb	15,875.7 kg	<b>32952</b>	\$2,390.00
50,000 lb	22,679.6 kg	<b>32953</b>	\$2,390.00
60,000 lb	27,215.5 kg	<b>32954</b>	\$2,390.00
75,000 lb	34,019.4 kg	<b>32955</b>	\$2,390.00
100,000 lb	45,359.2 kg	<b>32956</b>	\$4,100.00
<b>3-Module Kit</b>			
20,000 lb	9,071.8 kg	<b>32970</b>	\$4,695.00
25,000 lb	11,339.8 kg	<b>65984</b>	\$4,695.00
35,000 lb	15,875.7 kg	<b>32969</b>	\$7,395.00
50,000 lb	22,679.6 kg	<b>32968</b>	\$7,395.00
60,000 lb	27,215.5 kg	<b>32967</b>	\$7,395.00
75,000 lb	34,019.4 kg	<b>32966</b>	\$7,395.00
100,000 lb	45,359.2 kg	<b>32965</b>	\$12,195.00
<b>4-Module Kit</b>			
20,000 lb	9,071.8 kg	<b>32964</b>	\$6,195.00
25,000 lb	11,339.8 kg	<b>65983</b>	\$6,195.00
35,000 lb	15,875.7 kg	<b>32963</b>	\$9,495.00
50,000 lb	22,679.6 kg	<b>32962</b>	\$9,495.00
60,000 lb	27,215.5 kg	<b>32961</b>	\$9,495.00
75,000 lb	34,019.4 kg	<b>32960</b>	\$9,495.00
100,000 lb	45,359.2 kg	<b>32959</b>	\$16,195.00